

SECTION 16

SECTION 15

SECTION 14

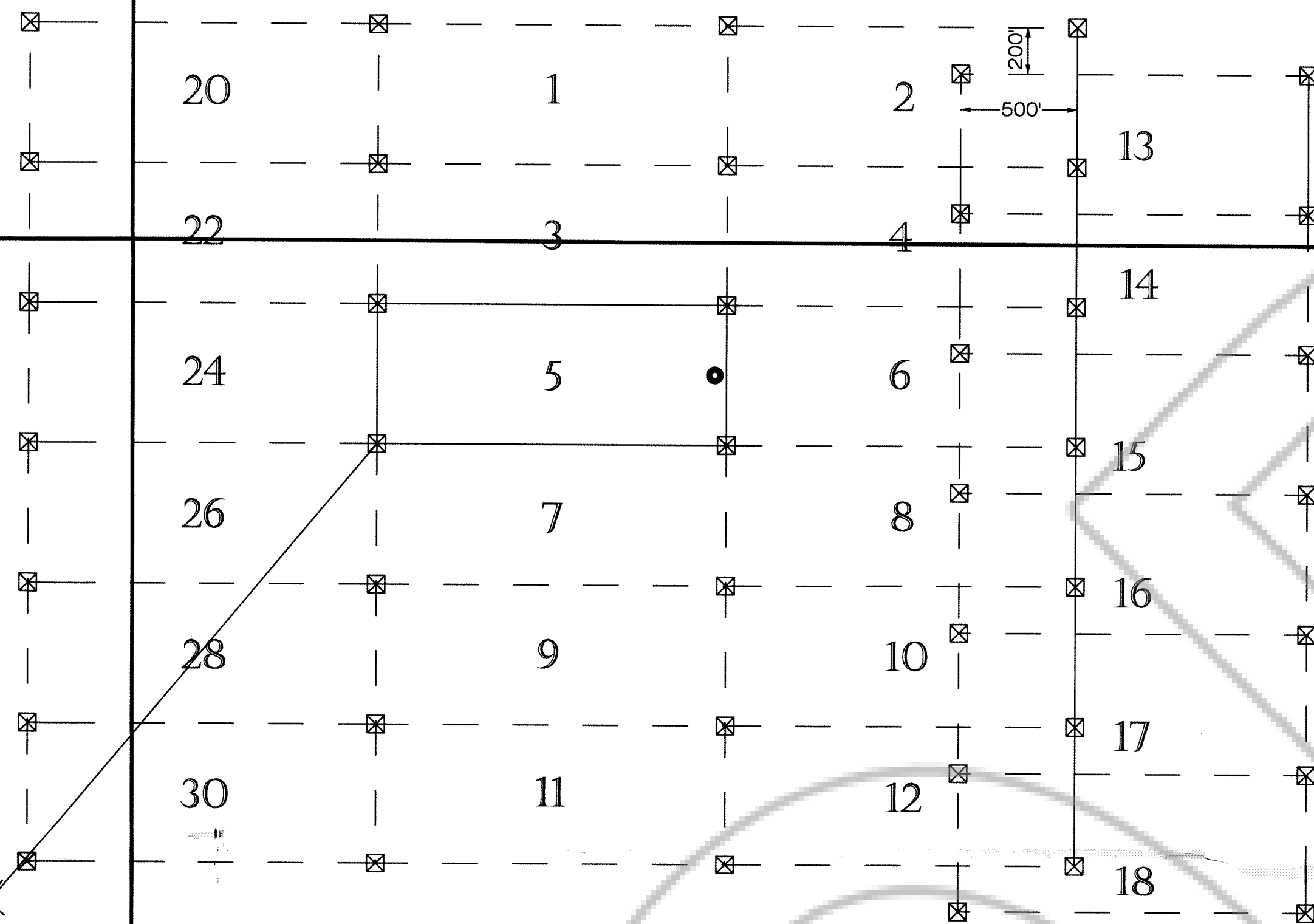
SECTION 21

SECTION 23

SECTION 22

SECTION 28

SECTION 27

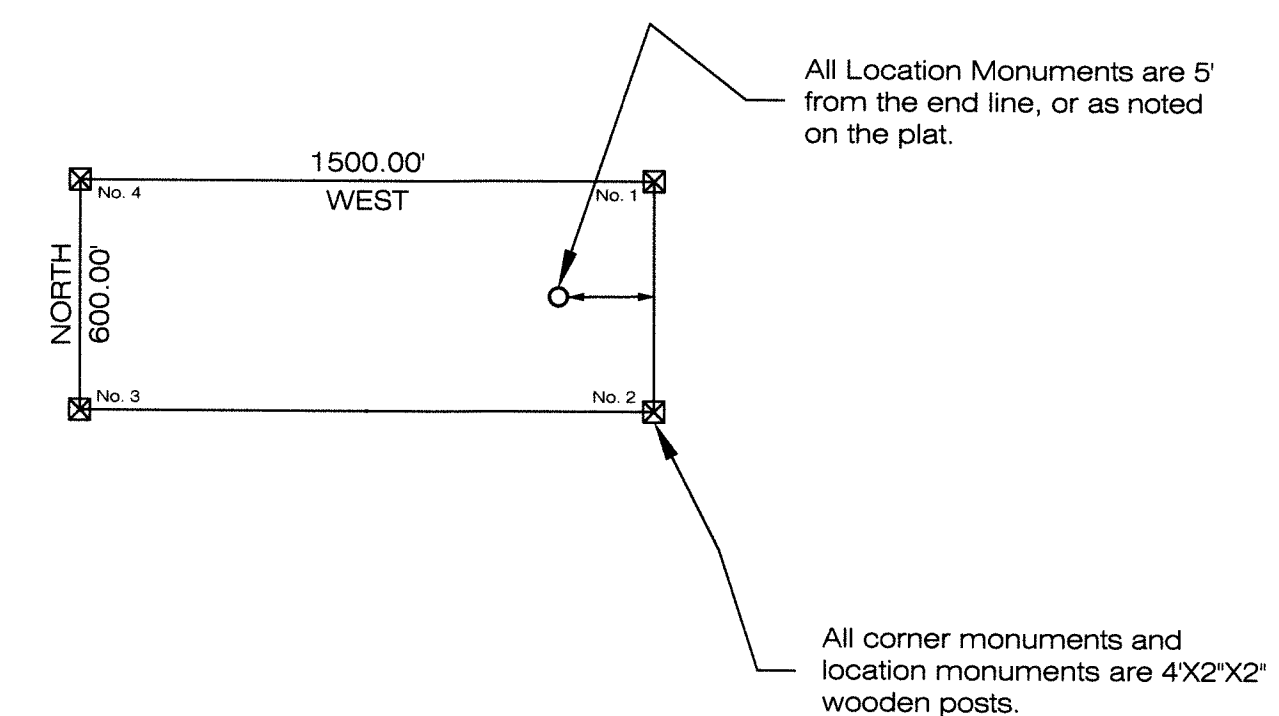


DASHED LINES INDICATE PREVIOUSLY RECORDED
CHS CLAIMS

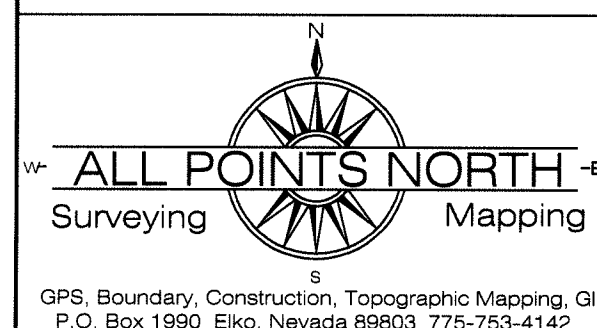
SURVEYOR'S CERTIFICATE
I, John D. Harmening, A Professional Land Surveyor (PLS 12062) Licensed in The State Of Nevada, certify that:

- 1) This plat represents the results of a survey conducted under my direct supervision at the instance of NEVADA PACIFIC GOLD (U.S.), INC., a Nevada Corporation (owner).
- 2) The mining claim surveyed lie within T24N, R48E, MDM, Section 22 and the survey was completed on September 13, 2004.
- 3) This plat complies with applicable statutes of this state and any local ordinances in effect on the date that the survey was completed, and the survey was conducted in accordance with Chapter 625 of the Nevada Administrative Code.
- 4) The monuments depicted on the plat are of the character shown, occupy the positions indicated and are of sufficient number and durability.

John D. Harmening
EXP 6-30-05
9-17-04



FILED AT THE REQUEST OF *Nevada Pacific Gold*
on Sept 22 20 04, at 3:32 min past 1 P.M.
RECORDS OF EUREKA COUNTY, NEVADA M. N. REBALEATI, Recorder
File No. 192560 Fee \$ 349.00



ALL POINTS NORTH
P.O. BOX 1990
ELKO, NEVADA 89803

Claims in T24N, R48E, MDM, Section 22
Claim #5 Located on September 13, 2004

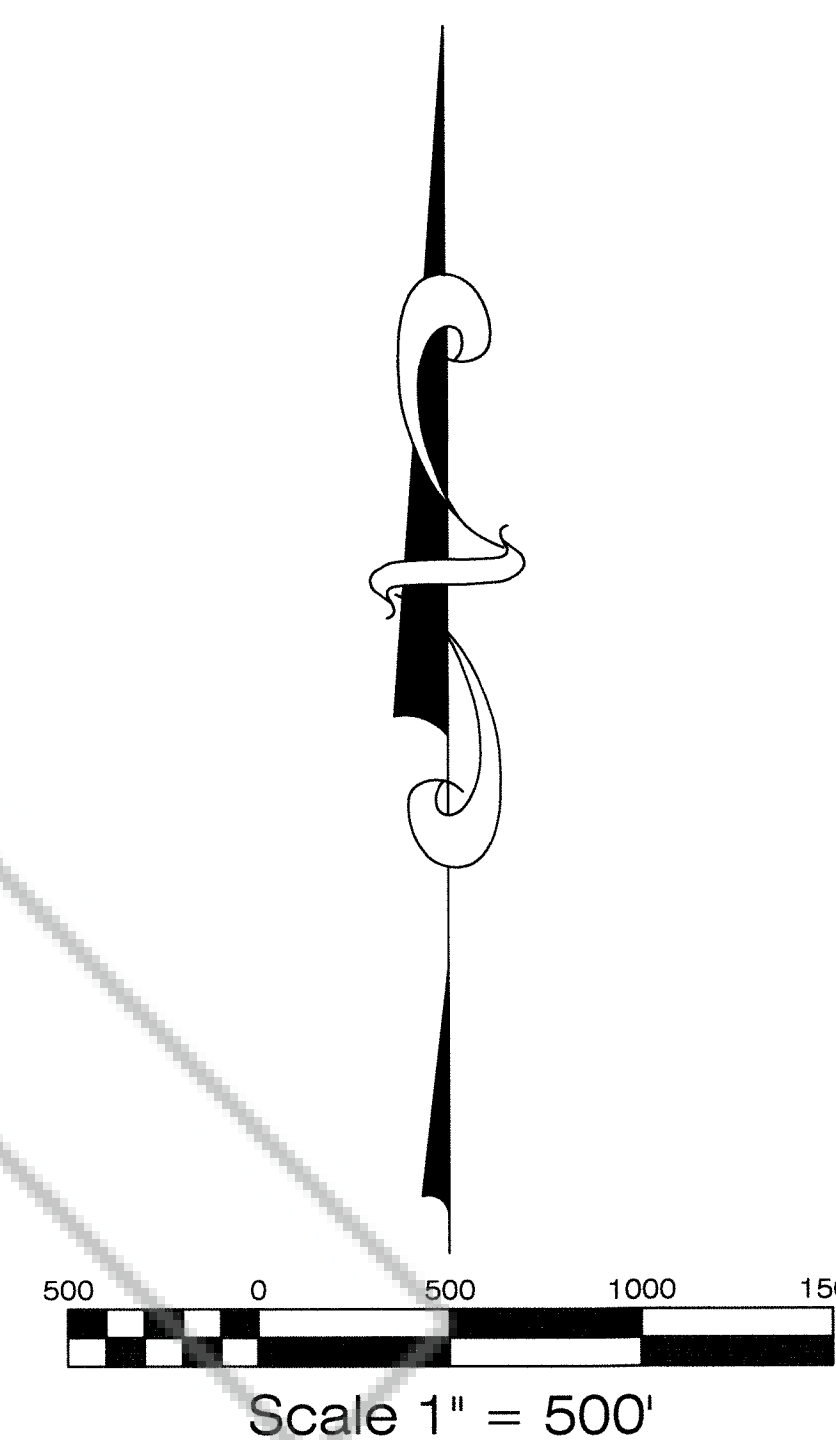
Map Of:
CHS Lode Claim #5
Eureka County, Nevada

Located For:
Nevada Pacific Gold (US), Inc a Nevada Corp.
P.O. Box 548
Elko, Nevada 89803

SECTION 28

SECTION 27

SECTION 26



Found GLO Brass Cap, 1915,
for the One Quarter Corner common
to Sections 28, 33, T24N, R48E, MDM.

N 82°16' E
5267 FT

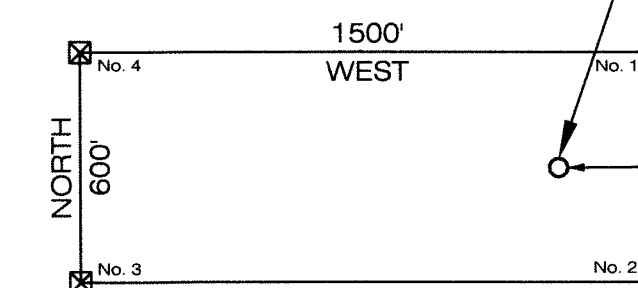
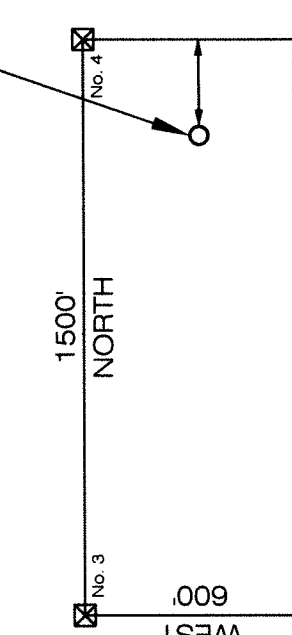
S 59°02' E
4006 FT

SECTION 33

SECTION 34

All Location Monuments are 5'
from the end line, or as noted
on the plat.

All corner monuments and
location monuments are 4'X2'X2"
wooden posts.



All Location Monuments are 5'
from the end line, or as noted
on the plat.

All corner monuments and
location monuments are 4'X2'X2"
wooden posts.

FILED AT THE REQUEST OF *Nevada Pacific Gold*
on *Sept 22, 2004*, at *3:22* mins past *12* M.
RECORDS OF EUREKA COUNTY, NEVADA M. N. REBALEATI, Recorder
File No. **192560** Fee \$ *207.2*

Claims in T24N, R48E, MDM, Section 26, 27 & 34
Claims 265 -278 Located September 13, 2004
Claims 264, & 279 -285 Located September 10, 2004

Map Of:

CHS Lode Claims # 264 - 285
Eureka County, Nevada

Located For:

Nevada Pacific Gold (US), Inc a Nevada Corp.
P.O. Box 548
Elko, Nevada 89803