

T23N R50E

T22N R50E

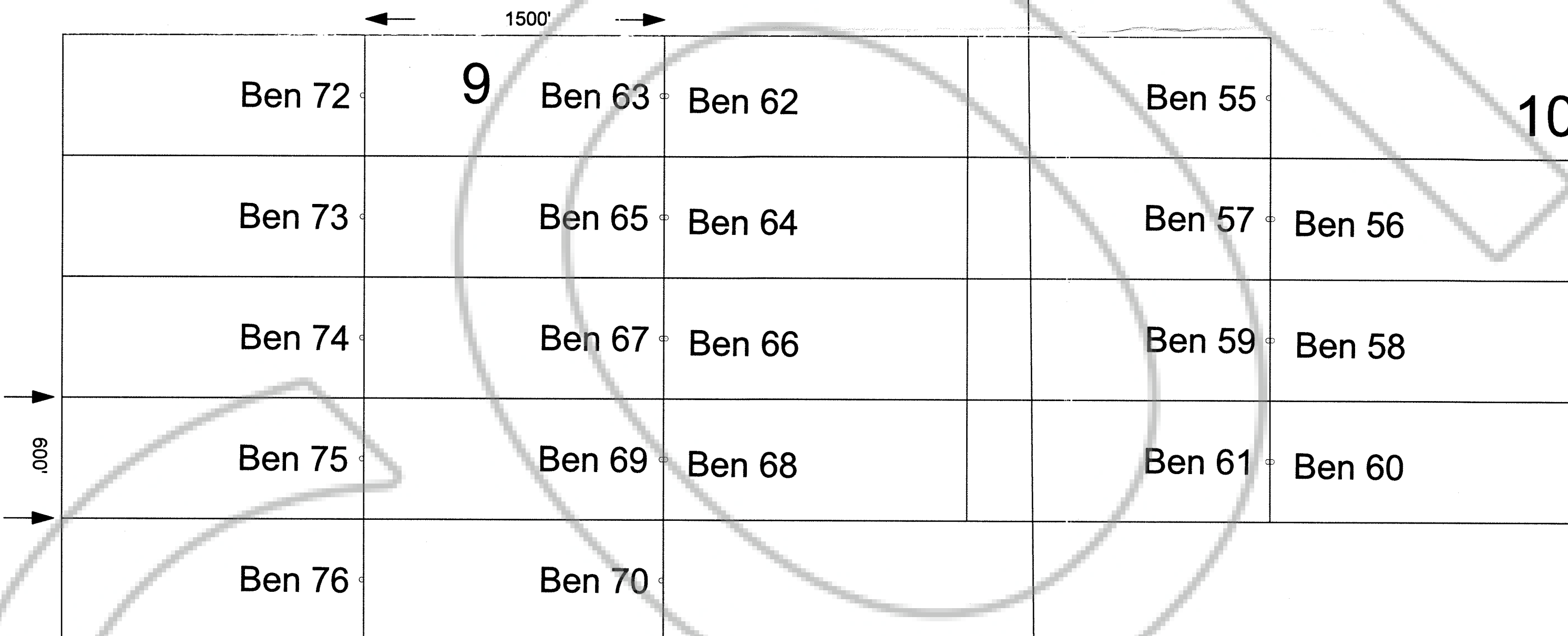
4

3

T22N R50E

10

The SE Corner of Ben 60 bears S28°39'W and is 5317' from the NE corner of Section 10 T22N R50E



"Ben" lode claims 55-77 were located on July 14, 2004 in Sections 9, 10, and 16 Township 22 North Range 50 East Eureka County, Nevada

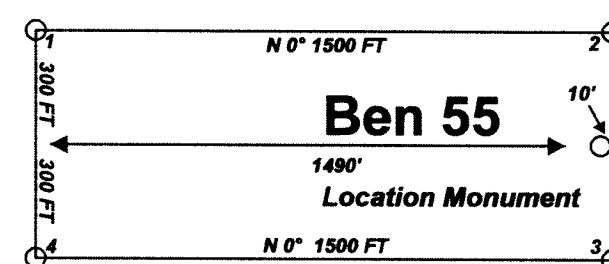
### Claim Location Map for Ben 55-77 Map 1 of 1

Scale 1:6000  
1" = 500'



Notes:  
Location Monuments are set 10' from claim end lines unless noted otherwise. All location and corner monuments are 2" X 2" X 4' wooden posts with scribed metal tags. All claims are 600' by 1500' unless noted otherwise.

Typical Claim



Locator:  
White Knight Gold (U.S.) Inc.  
121 Woodland Ave Suite #140  
Reno Nv. 89523-8906

FILED AT THE REQUEST OF *White Knight Gold*  
on *September 20, 2004* at *5:18* mins. past *12* M.  
RECORDS OF EUREKA COUNTY, NEVADA M. N. REBALEATI, Recorder  
File No. **192608** Fee \$ *820.50*

MINING CLAIM LOCATION MAP Ben 55-77 Lode Mining Claims
<i>White Knight Gold (U.S.) Inc.</i> 121 Woodland Ave Suite #140 Reno Nv. 89523-8906
Ben 55-77 Claims.dwg August 17, 2004
Drawn By: G.I.S. Land Services Surveyed By: T&T Exploration L.L.C. Datum: 1927 Projection: UTM Zone 11 Units: Feet