

19

20

21

T22N

T22N R50E

30

29

28

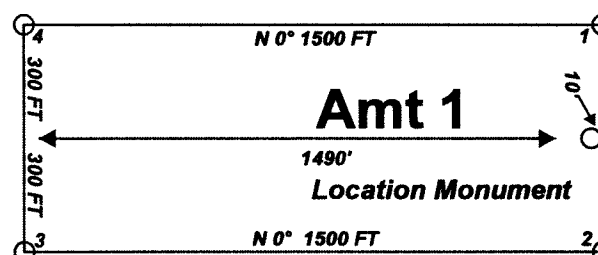


"AMT" lode claims 1 - 69, 76 and 77 were located on July 10, 2004 in Sections 20 - 21 and 27 - 32 Township 22 North Range 50 East Eureka County, Nevada

Claim Location Map for AMT 1-69, 76, and 77
Map 1 of 2

Notes:
Location Monuments are set 10' from claim end lines unless noted otherwise. All location and corner monuments are 2" X 2" X 4" wooden posts with scribed metal tags. All claims are 600' by 1500' unless noted otherwise.

Typical Claim

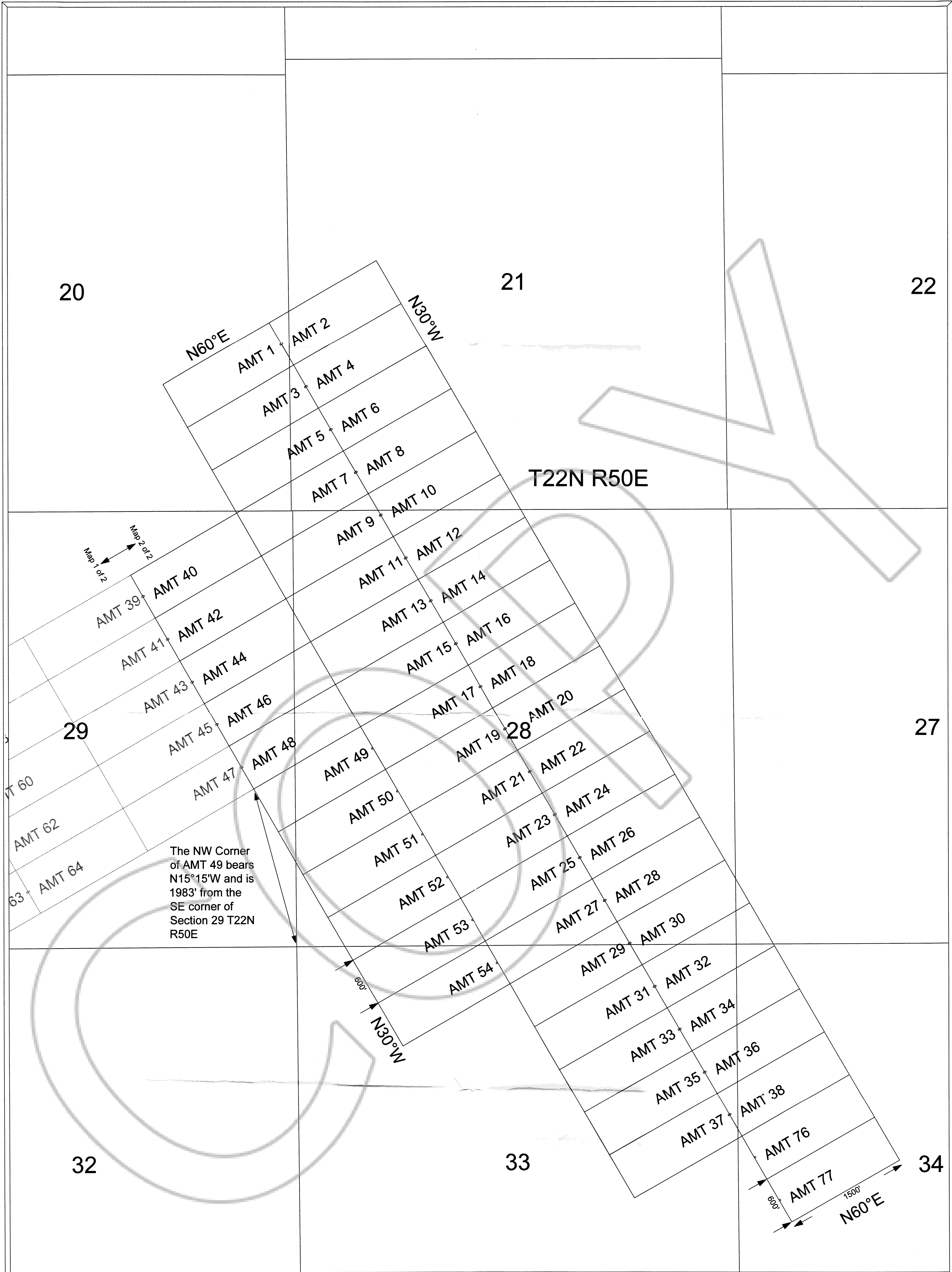


FILED AT THE REQUEST OF *White Knight Gold (U.S.) Inc.*
on *Sept 23, 2004*, at *48* mins. past *12* M.
RECORDS OF EUREKA COUNTY, NEVADA M. N. REBALEATI, Recorder
File No. **192766** Fee \$ *1064.00* *18*

Scale 1:6000
1" = 500'
0 1500'
FEET

MINING CLAIM LOCATION MAP
AMT 1 - 69 and 76 - 77
Lode Mining Claims
White Knight Gold (U.S.) Inc.
121 Woodland Ave Suite 140
Reno Nv. 89523
AMT_ClaimMap_1_69.dwg
August 18, 2004
Drawn By: G.I.S. Land Services
Surveyed By: T&T Exploration L.L.C.
Datum: 1927 Projection: UTM Zone 11
Units: Feet

Locator:
White Knight Gold (U.S.) Inc.
121 Woodland Ave Suite 140
Reno Nv. 89523



"AMT" lode claims 1 - 69, 76 and 77 were located on July 10, 2004 in Sections 20 - 21 and 27 - 32 Township 22 North Range 50 East Eureka County, Nevada

Claim Location Map for AMT 1-69, 76, and 77
Map 2 of 2

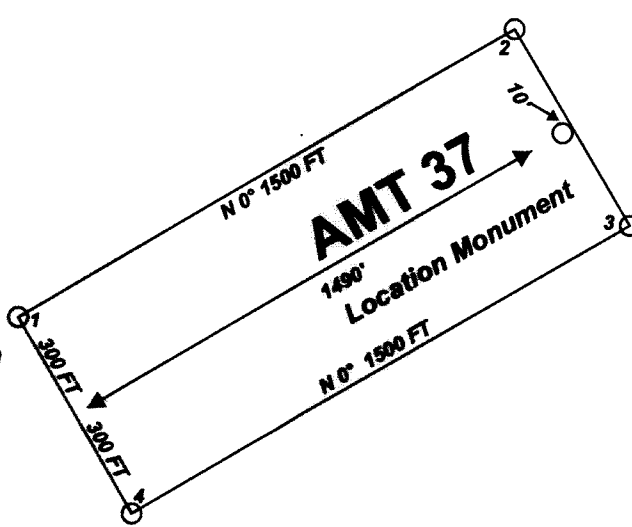
Scale 1:6000
1" = 500'



Notes:
Location Monuments are set 10' from claim end lines unless noted otherwise.
All location and corner monuments are 2" X 2" X 4' wooden posts with scribed metal tags. All claims are 600' by 1500' unless noted otherwise.

Locator:
White Knight Gold (U.S.) Inc.
121 Woodland Ave Suite 140
Reno Nv. 89523

Typical Claim



FILED AT THE REQUEST OF *White Knight Gold (U.S.) Inc.*
on *Sept 23* 20*04* at *48* mins. past *10* P.M.
RECORDS OF EUREKA COUNTY, NEVADA M. N. REBALEATI, Recorder
File No. *192766* Fee \$ *1069.00*

MINING CLAIM LOCATION MAP
AMT 1 - 69 and 76 - 77
Lode Mining Claims
White Knight Gold (U.S.) Inc.
121 Woodland Ave Suite 140
Reno Nv. 89523
AMT_ClaimMap_1_69.dwg
August 18, 2004
Drawn By: G.I.S. Land Services
Surveyed By: T&T Exploration L.L.C.
Datum: 1927 Projection: UTM Zone 11
Units: Feet