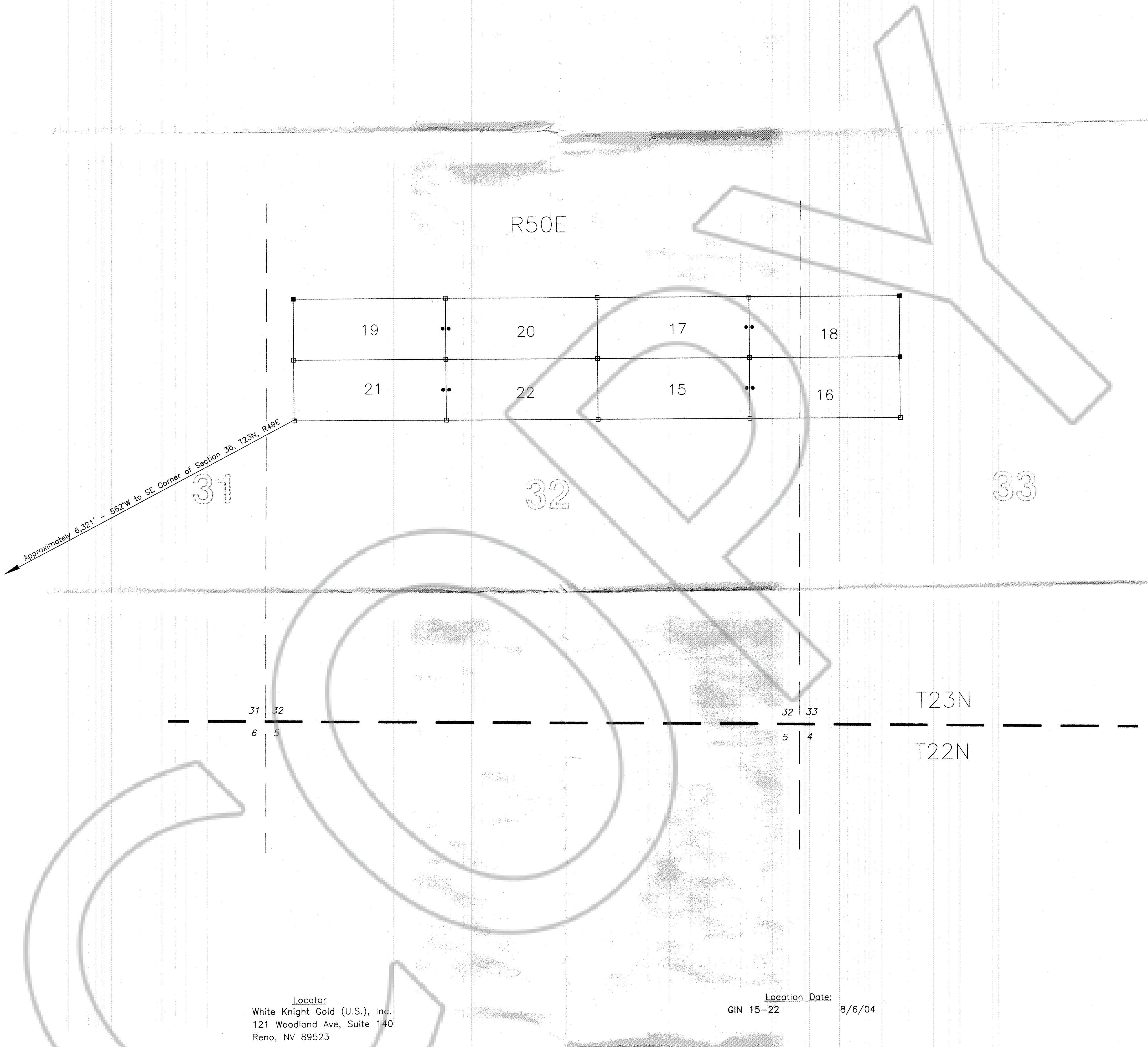


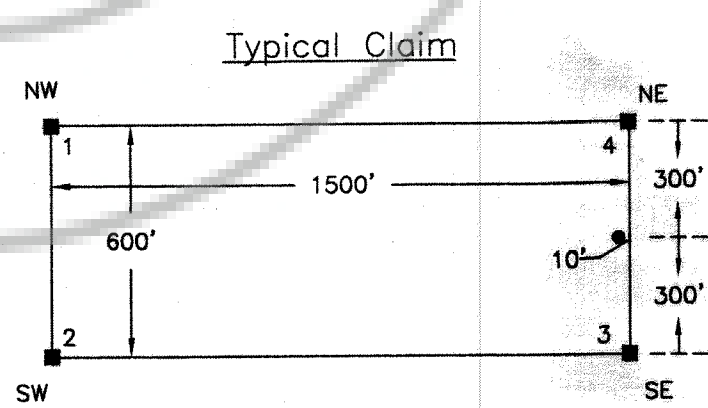
# MAP OF THE GIN (15-22) GROUP OF LODE CLAIMS

Unsurveyed Sections 32 & 33 of T23N, R50E - MDB&M  
Unknown Mining District, Eureka County, Nevada



Locator  
 White Knight Gold (U.S.), Inc.  
 121 Woodland Ave, Suite 140  
 Reno, NV 89523

Location Date:  
 GIN 15-22 8/6/04



• Location Monument

All Claims are 1500' long X 600' Wide  
 Location Monuments are Set-in 10' from End Lines  
 All Monuments are 1 1/2" X 1 1/2" Wooden Posts Marked with Metal Tags

Tie: The SW Corner of GIN 21 is Approximately 6,321' at a Bearing of N62°E from the SE Corner of Section 36, T23N, R49E

FILED AT THE REQUEST OF White Knight Gold Inc  
 on Oct 11 20 04 at 11 mins past 1 PM  
 RECORDS of EUREKA COUNTY, NEVADA M. N. REBALEATI, Recorder  
 File No. 193111 Fee \$ 124.00

