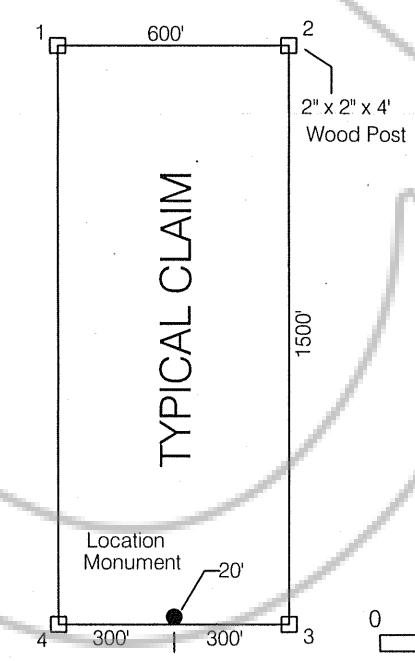


T20N
R50E

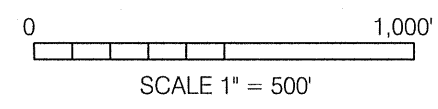
FILED AT THE REQUEST OF Robert S. Fibberg
 on Oct 15 20 04, at 53 mins. past 3 P.M.
 RECORDS of EUREKA COUNTY, NEVADA M. N. REBALEATI, Recorder
 File No. 193142 Fee \$ 14.00

TIE: The SE Cor
 of SoLM 108 is 1.769'
 S55°W of the
 NE Cor of Sec 15
 T20N R50E



LOCATION DATES
 SoLM 97 thru 108 7/20/04

LOCATOR
 TREND RESOURCES, LLC
 35 N. EDISON WAY, SUITE 4
 RENO, NEVADA 89502



**AMENDED MAP OF THE
 SoLM 97 THRU 108 Claims**
 SECTIONS 10 & 15
 TOWNSHIP 20N, RANGE 50E, MDBM
 EUREKA COUNTY
 NEVADA

Eureka County file #191431