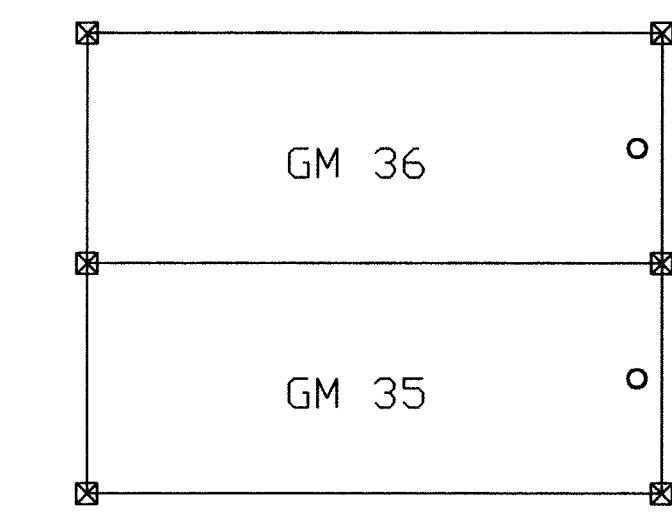


R 50 E



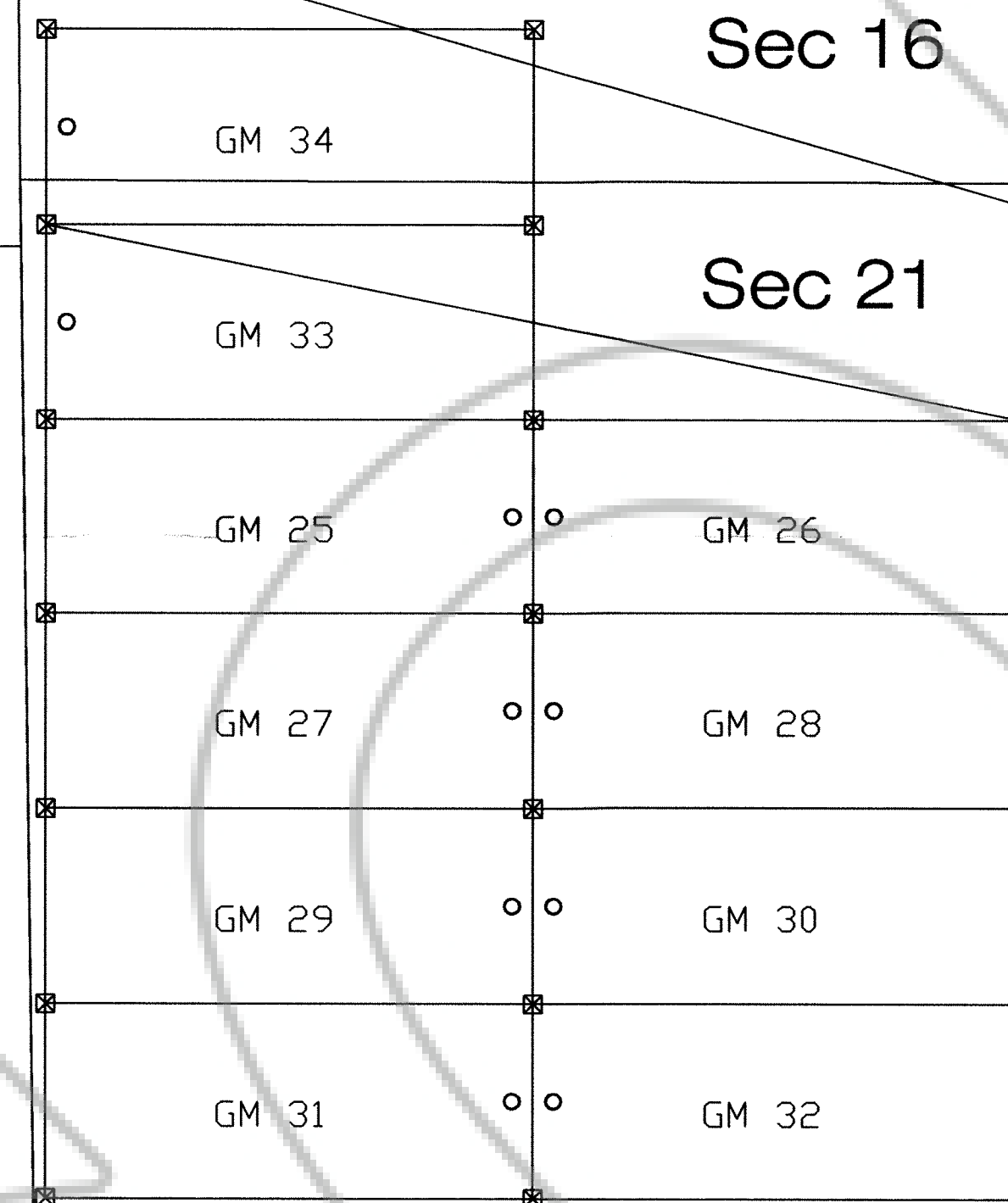
T 22 N

Sec 17

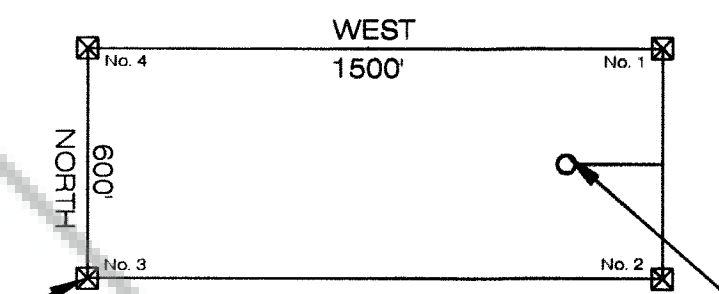
Sec 20

Sec 16

Sec 21



Typical Claim



All Location Monuments are 10' from the end line, or as noted on the plat.

All corner monuments and location monuments are 4x2x2 wooden posts.

Tie Line: 30,441' S13.5E to NE Cor Sec 30 T22N/R51E

Tie Line: 27103' S11E NW Corner GM 33 to NE Cor Sec 30 T22N/R51E



Scale 1" = 500'

Claims Located By:

Hunsaker Inc
168 E. Glen Brier Drive
Spring Creek, Nevada 89815

Claims in T22N, R50E, MDBM, sec 16, 17, and 21
GM 25-32 Located August 2, 2004
GM 33-36 Located September 24, 2004

Map Of:

GM Claims 25-36
Eureka County, Nevada

Located For:

Scoonover Exploration LLC
P.O. Box 2021
Elko, Nevada 89803

FILED AT THE REQUEST OF *Scoonover Exploration*
on *Oct 20* 20 *04*, at *3:39* mins, past *2:00* P.M.
RECORDS OF EUREKA COUNTY, NEVADA M. N. REBALENTI, Recorder
File No. **193195** Fee \$ *184.00*