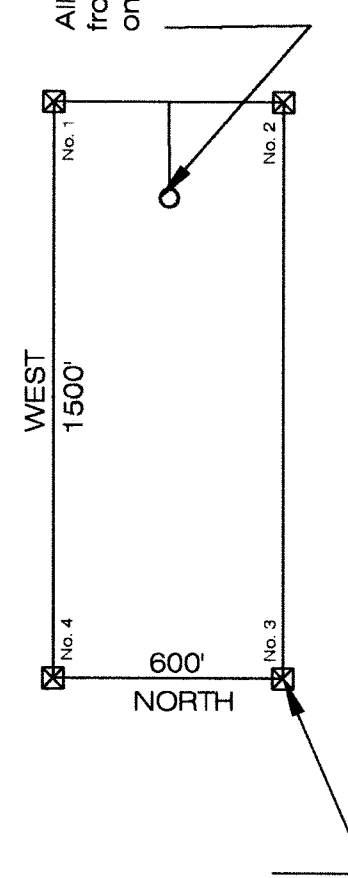


Typical Claim



All corner monuments and location monuments are 4x2x2 wooden posts.

All Location Monuments are 10' from the end line, or as noted on the plat.

Claims Located By:  
 Hunsaker Inc  
 168 E. Glen Brier Drive  
 Spring Creek, Nevada 89815

Claims in T23N, R50E, MDBM, sec 22, 23, 26, 27, 28, 34, and 35  
 DS 73-86 Located July 30, 2004  
 DS 7, 11, 13, 15, and 50-52 Located October 11, 2004  
 DS 17-36, 38, 40, 42, 44-46, and 53-72 Located October 21, 2004

Map Of:  
 DS Claims 7,11,13,15,17-36  
 38,40,42,44-46, and  
 50-86  
 Eureka County, Nevada

Located For:  
 Scoonover Exploration LLC  
 P.O. Box 2021  
 Elko, Nevada 89803

FILED AT THE REQUEST OF *Scoonover Exploration LLC*  
 on *Oct 26*, 20 *08*, at *5:59* mins past *10:24* AM  
 RECORDS OF EUREKA COUNTY, NEVADA M. N. REBALEATI, Recorder  
 Fee \$ *1009.00*  
 File No. **193263**