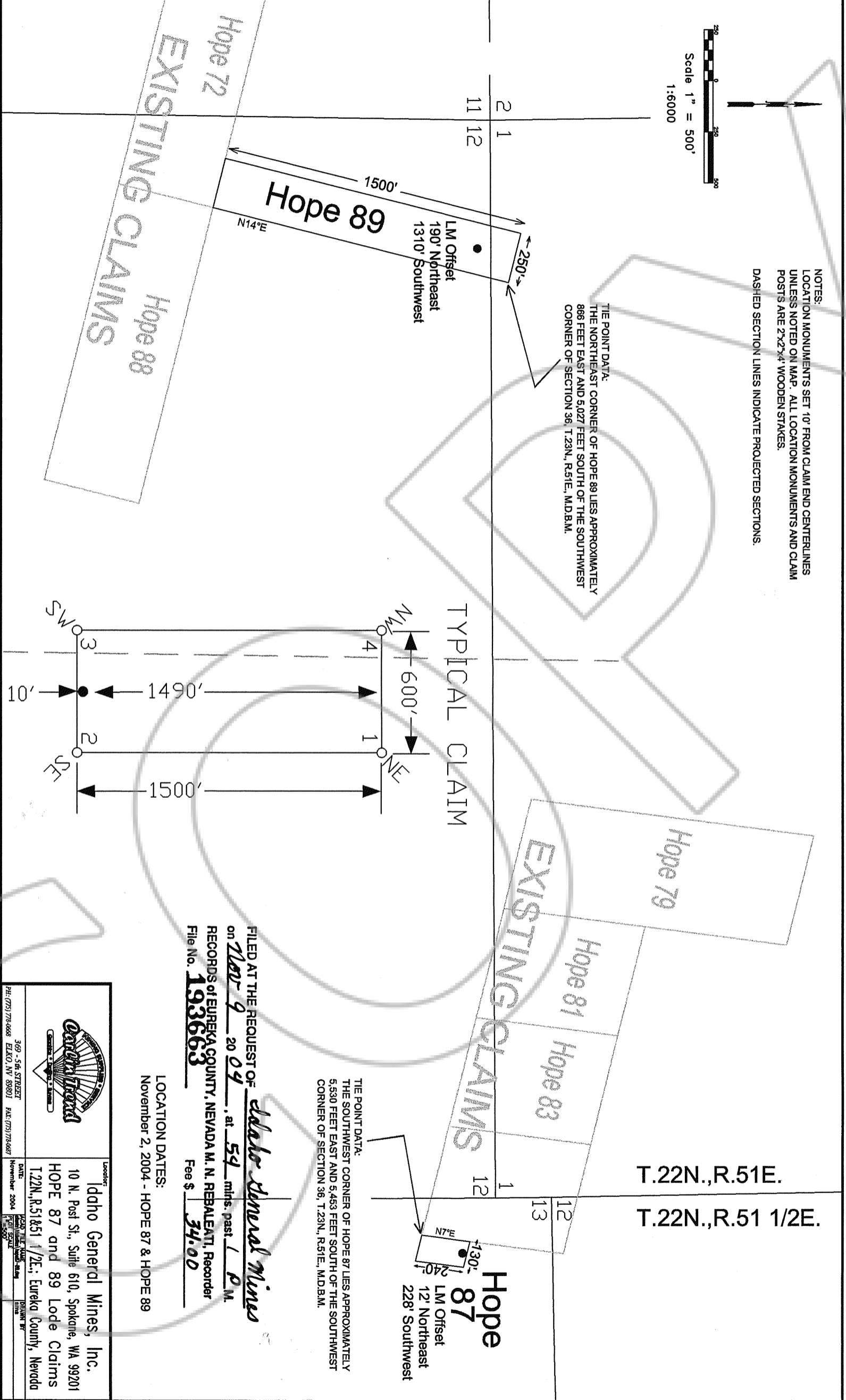


NOTES:
 LOCATION MONUMENTS SET 10' FROM CLAIM END CENTERLINES UNLESS NOTED ON MAP. ALL LOCATION MONUMENTS AND CLAIM POSTS ARE 2x2x4" WOODEN STAKES.
 DASHED SECTION LINES INDICATE PROJECTED SECTIONS.

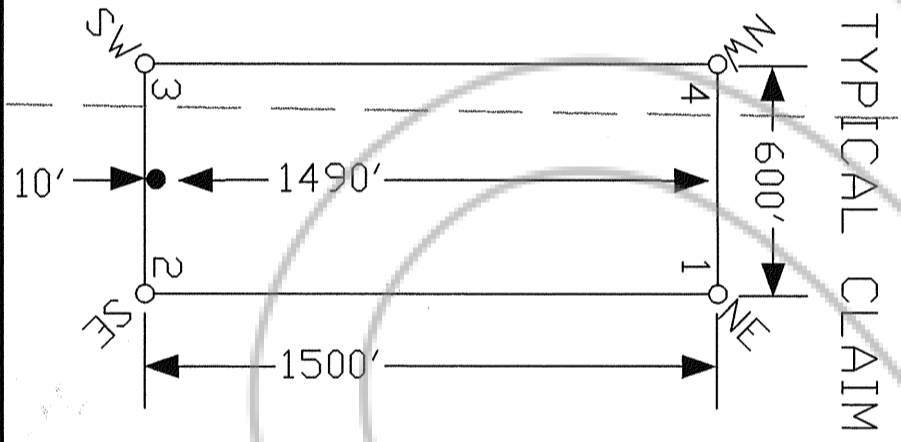


THE POINT DATA:
 THE NORTHEAST CORNER OF HOPE 89 LIES APPROXIMATELY 866 FEET EAST AND 5,027 FEET SOUTH OF THE SOUTHWEST CORNER OF SECTION 36, T.23N., R.51E., M.D.B.M.

LM Offset
 190' Northeast
 1310' Southwest

THE POINT DATA:
 THE SOUTHWEST CORNER OF HOPE 87 LIES APPROXIMATELY 5,530 FEET EAST AND 5,453 FEET SOUTH OF THE SOUTHWEST CORNER OF SECTION 36, T.23N., R.51E., M.D.B.M.

LM Offset
 12' Northeast
 228' Southwest



FILED AT THE REQUEST OF *Chlorine Mineral Mines*
 on *Mar 9* 20 *04* . at *54* miles past *L* P.M.
 RECORDS OF EUREKA COUNTY, NEVADA M. N. REBALEATI, Recorder
 File No. **193663**
 Fee \$ **34.00**

LOCATION DATES:
 November 2, 2004 - HOPE 87 & HOPE 89

349 - 5th STREET EUREKA, NV 89301 TEL: (775) 734-6668 FAX: (775) 734-6667	Recorder November 2, 2004
Lessor Idaho General Mines, Inc. 10 N. Post St., Suite 610, Sparks, WA 99201 HOPE 87 and 89 Lode Claims T.22N., R.51&51 1/2E., Eureka County, Nevada	Date November 2, 2004 Recorder November 2, 2004

T.22N.,R.51E.
 T.22N.,R.51 1/2E.