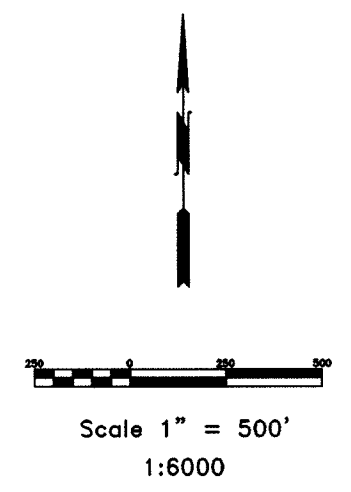
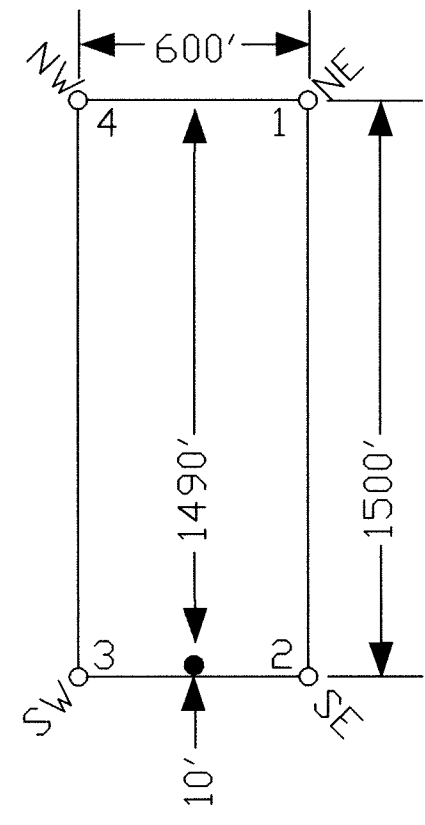


TYPICAL CLAIM



T.17N., R.51E.
T.17N., R.52E.

7

8

3	4	5	6	7	8	9	10	11
:	:	:	:	:	:	:	:	:
15	16	17	18	19	20	21	22	23

28	29	30	31	32	33	34	35	36	37	38
:	:	:	:	:	:
45	46	47	48	49	50	51	52	53	54	55
.
						69	70	71	72	

13

18

17

19

20

TIE POINT DATA:
THE SOUTHWEST CORNER OF JAG 69 LIES APPROXIMATELY
3,839 FEET EAST AND 15,876 FEET NORTH OF THE SOUTHEAST
CORNER OF SECTION 36, T.17N., R.51E., M.D.B.M.

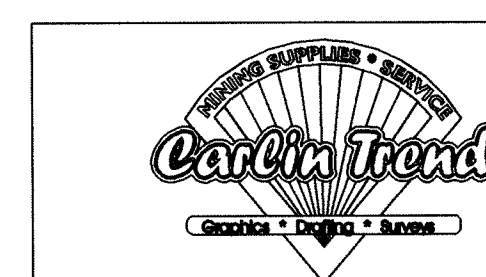
LOCATION DATES:
September 14, 2004 - JAG 31-36,48-50
September 29, 2004 - JAG 3-11,15-23,28-30,45-47
October 6, 2004 - JAG 37-38,51-55,69-72

(44 Total Claims)

NOTES:
LOCATION MONUMENTS SET 10' FROM CLAIM END
CENTERLINES. ALL LOCATION MONUMENTS AND CLAIM
POSTS ARE 2"x2"x4' WOODEN STAKES.

DASHED SECTION LINES INDICATE PROJECTED SECTIONS.

FILED AT THE REQUEST OF *Great American Minerals*
on *Nov 12* 20 *04*, at *10* mins. past *1* P.M.
RECORDS OF EUREKA COUNTY, NEVADA M. N. REBALEATI, Recorder
File No. **193711** Fee \$ *664.00*



369 - 5th STREET
PH: (775) 778-0668 ELKO, NV 89801 FAX: (775) 778-0607

Locator:
Great American Minerals, Inc.
9051 S. 1075 W., Ste B-301, West Jordan, UT 84088
JAG Lode Claims
T.17N., R.51,52E.; Eureka County, Nevada

DATE: November 2004
DRAWN BY: [Signature]
PLOT SCALE: 1" = 500'