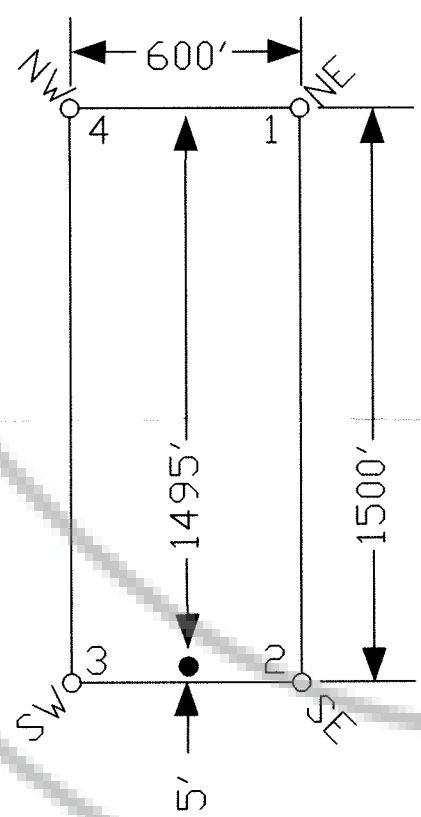


TIE POINT DATA:
 THE SOUTHWEST CORNER OF WILD BILL 10 LIES APPROXIMATELY
 9,733 FEET WEST AND 20,190 FEET NORTH OF THE SOUTHEAST
 CORNER OF SECTION 35, T.23N., R.51E., M.D.B.M.

TYPICAL CLAIM



LOCATION DATES:
 September 14, 2004 - Wild Bill 1-8
 September 29, 2004 - Wild Bill 9-22

NOTES:
 LOCATION MONUMENTS SET 5' FROM CLAIM END
 CENTERLINES. ALL LOCATION MONUMENTS AND CLAIM
 POSTS ARE 2"x2"x4' WOODEN STAKES.

DASHED SECTION LINES INDICATE PROJECTED SECTIONS.

FILED AT THE REQUEST OF Great American Minerals
 on Nov 12 2004 at 2:24 mins. past 1 P.M.
 RECORDS OF EUREKA COUNTY, NEVADA M. N. REBALEATI, Recorder
 File No. 193734 Fee \$ 334.00

	Locator: Great American Minerals, Inc. 9051 S. 1075 W., Ste B-301, West Jordan, UT 84088 Wild Bill 1-22 Lode Claims T.23N., R.51E.; Eureka County, Nevada	
	DATE: October 2004	ACAD FILE NAME: clients\mcdowell\wildbill.dwg PLOT SCALE: 1"=500'
369 - 5th STREET PH: (775) 778-0668 ELKO, NV 89801 FAX: (775) 778-0687		