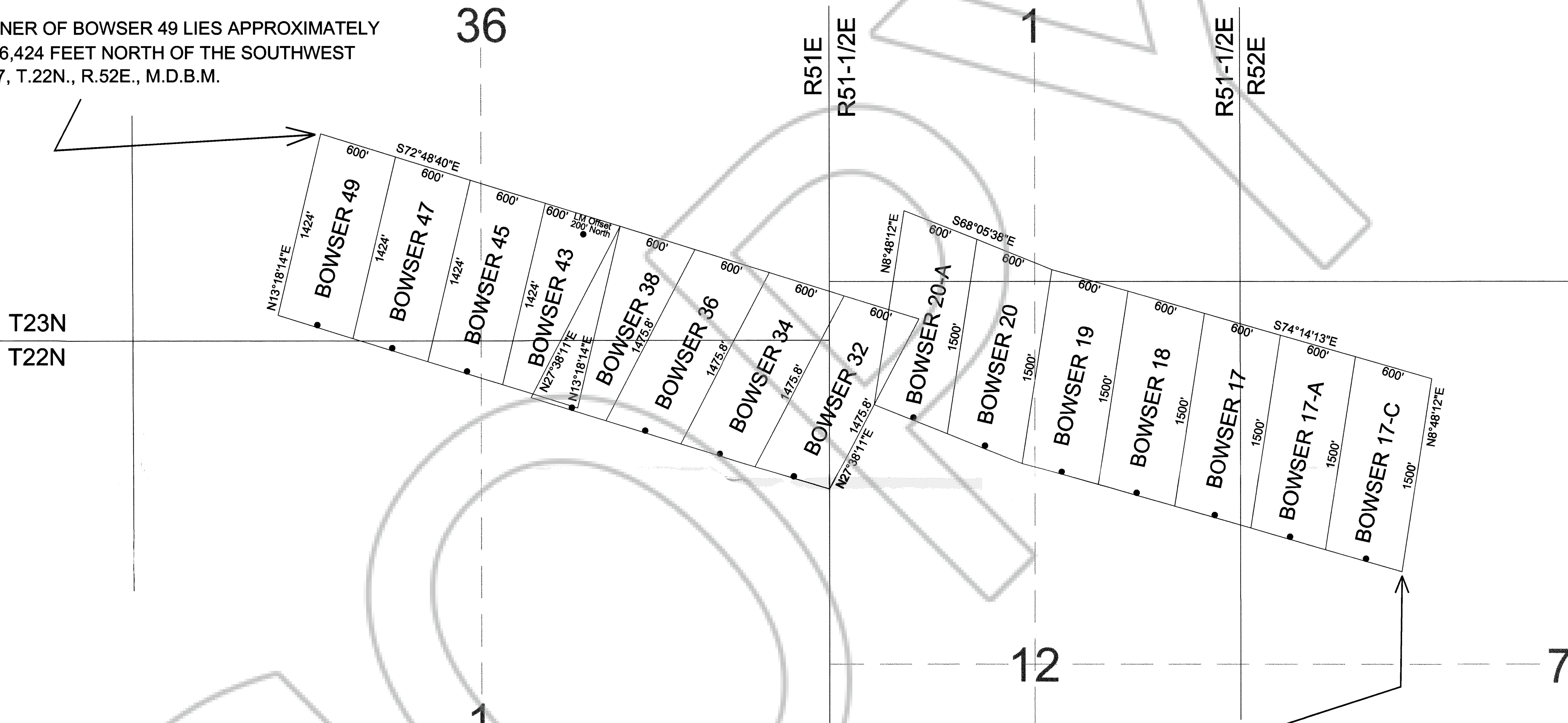
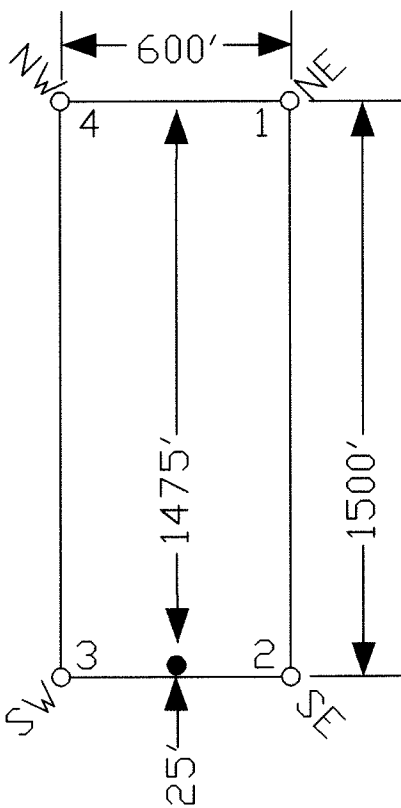


TIE POINT DATA:
THE NORTHWEST CORNER OF BOWSER 49 LIES APPROXIMATELY
7,058 FEET WEST AND 6,424 FEET NORTH OF THE SOUTHWEST
CORNER OF SECTION 7, T.22N., R.52E., M.D.B.M.



TYPICAL CLAIM




NOTES:
LOCATION MONUMENTS SET 25' FROM CLAIM END CENTERLINES UNLESS
NOTED ON MAP. ALL LOCATION MONUMENTS ARE 2"X2"X4' WOODEN STAKES
AND CLAIM CORNERS ARE 4"X4"X4' WOODEN STAKES.

LOCATION DATES:
October 29, 2004 - BOWSER 32,34,36,38,47,49
October 30, 2004 - BOWSER 17,17-A,17-C,18,19,20,20-A
October 31, 2004 - BOWSER 43,45

(15 Total Claims)

TIE POINT DATA:
THE SOUTHEAST CORNER OF BOWSER 17-C LIES APPROXIMATELY
1,230 FEET EAST AND 3,069 FEET NORTH OF THE SOUTHWEST
CORNER OF SECTION 7, T.22N., R.52E., M.D.B.M.

Idaho General Mines
FILED AT THE REQUEST OF Carlin Trend, Inc.
on Nov 18 2004, at 04 mins. past 02 P.M.
RECORDS OF EUREKA COUNTY, NEVADA M. N. REBALEATI, Recorder
File No. 193806 Fee \$ 229.00

	Locator: Idaho General Mines, Inc. 10 N. Post St., Suite 610, Spokane, WA 99201 BOWSER Lode Claims T.22,23N.,R.51,51-1/2,52E; Eureka Cnty, NV	
	DATE: November 2004	DRAWN BY STMS
369 - 5th STREET PH: (775) 778-0668 ELKO, NV 89801 FAX: (775) 778-0687		