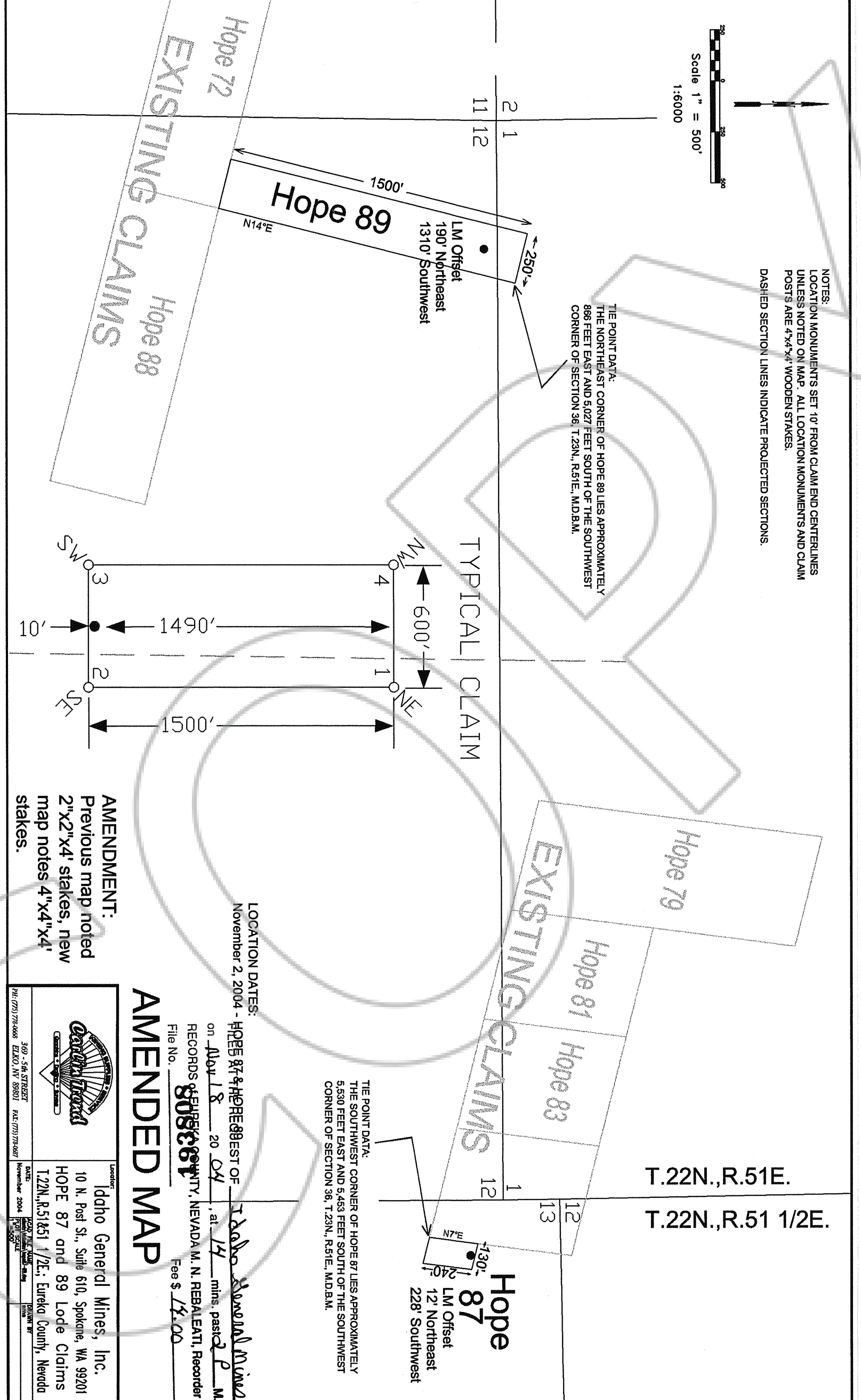


Scale 1" = 500'  
1:6000

NOTES:  
LOCATION MONUMENTS SET 10' FROM CLAIM END CENTERLINES UNLESS NOTED ON MAP. ALL LOCATION MONUMENTS AND CLAIM POSTS ARE 4"x4" WOODEN STAKES.  
DASHED SECTION LINES INDICATE PROJECTED SECTIONS.

THE POINT DATA:  
THE NORTHEAST CORNER OF HOPE 89 LIES APPROXIMATELY 868 FEET EAST AND 5,027 FEET SOUTH OF THE SOUTHWEST CORNER OF SECTION 36, T.23N., R.51E., M.D.B.M.

THE POINT DATA:  
THE SOUTHWEST CORNER OF HOPE 87 LIES APPROXIMATELY 5,530 FEET EAST AND 5,453 FEET SOUTH OF THE SOUTHWEST CORNER OF SECTION 36, T.23N., R.51E., M.D.B.M.



T.22N.,R.51E.  
T.22N.,R.51 1/2E.

AMENDMENT:  
Previous map noted 2"x2"x4' stakes, new map notes 4"x4"x4' stakes.

	303 S. 6th STREET ILS (77) 714297 ILS (77) 714298 ILS (77) 714299
Lessor: Idaho General Mines, Inc. 10 N. Post St., Suite 610, Spokane, WA 99201 HOPE 87 and 89 Lode Claims T.22N., R.51&51 1/2E., Eureka County, Nevada	Date: November 2004

**AMENDED MAP**

LOCATION DATES: HOPE 87 & HOPE 89  
November 2, 2004

on April 18, 2004, at 14 mins. past 2 P.M.  
 RECORDS & SURVEY COMPANY, NEVADA, M. N. REBALIANTI, Recorder  
 File No. **8083661**  
 Fee \$ 14.00