

T.27N., R.53E.
T.26N., R.53E.

840	••	841
838	••	839
836	••	837
834	••	835
832	••	833
830	••	831

5 4

EXISTING PHOENIX CLAIMS

735

736

737

738

739

740

741

742

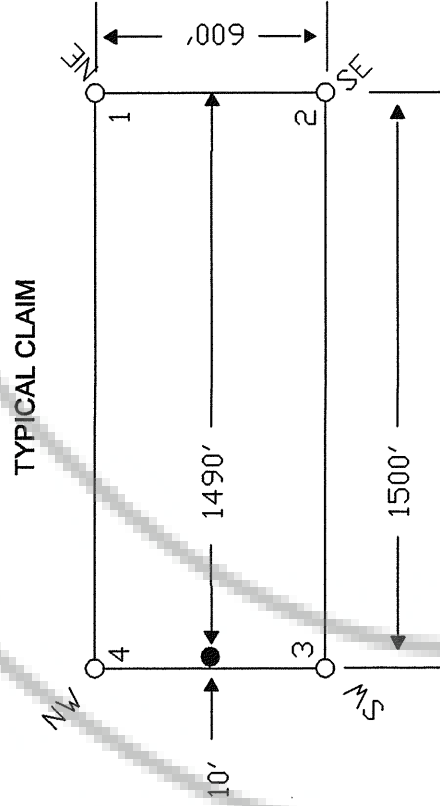
743

744

746

748

EXISTING PHOENIX CLAIMS



TIE POINT DATA:
THE NORTHWEST CORNER OF PHOENIX 737 LIES APPROXIMATELY
2,493 FEET EAST AND 3,964 FEET SOUTH OF THE NORTHWEST
CORNER OF SECTION 5, T.26N., R.53E., M.D.B.M.

