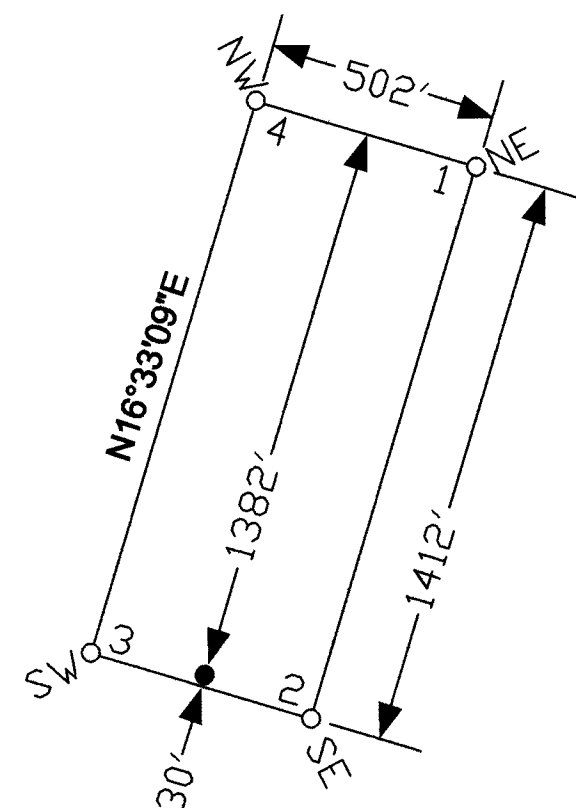


TIE POINT DATA:  
THE NORTHEAST CORNER OF HOPE # 46 LIES APPROXIMATELY  
4,722 FEET EAST AND 10,786 FEET SOUTH OF THE SOUTHEAST  
CORNER OF SECTION 36, T.23N., R.51E., M.D.B.M.



TYPICAL CLAIM



NOTES:  
LOCATION MONUMENTS SET 30' FROM CLAIM END CENTERLINES.  
ALL LOCATION MONUMENTS ARE 2"x2"x4' WOODEN STAKES  
AND CLAIM CORNERS ARE 4"x4"x4' WOODEN STAKES.

LOCATION DATES:  
September 22, 2004 - HOPE # 2,4,6,8,10,12,14,16,18,20,22,  
24,26,28,30,32,34,36,38,40,42,44,46-53  
September 23, 2004 - HOPE # 54-69

(46 Total Claims)

FILED AT THE REQUEST OF *William Matlack*  
on *Nov 24 2004* at *5:38* mins. past *2:00* P.M.  
RECORDS OF EUREKA COUNTY, NEVADA M. N. REBALEATI, Recorder  
File No. **194166** Fee \$ *644.00*



369 - 5th STREET  
PH: (775) 778-0668 ELKO, NV 89801 FAX: (775) 778-0687

Locator: **William Matlack**  
181 Erie Street #114, Jersey City, NJ 07302  
HOPE Lode Claims  
T.22N., R.51, 51-1/2, 52E.; Eureka County, Nevada

DATE: November 2004  
ACAD FILE NAME: *Carlin Trend Hope.dwg*  
PLOT SCALE: 1"=500'  
DRAWN BY: *pm*