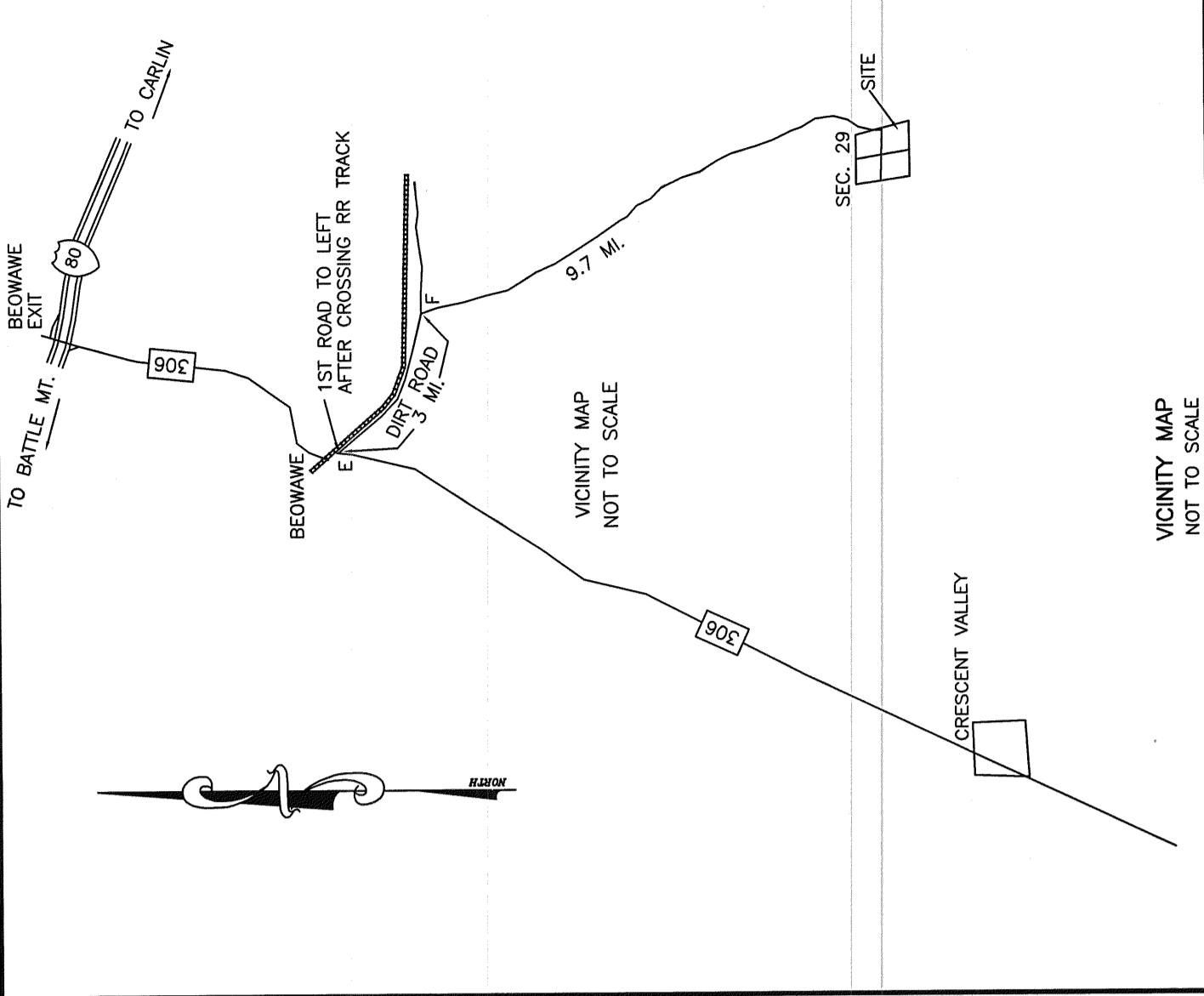


RECORD OF SURVEY

SE 1/4 SECTION 29, T 30 N, R 50 E, MDB&M



SURVEYOR'S CERTIFICATE

I, JOHN H. GRANGE, A PROFESSIONAL LAND SURVEYOR, LICENSED IN THE STATE OF NEVADA, CERTIFY THAT:

THIS PLAT REPRESENTS THE RESULTS OF A SURVEY CONDUCTED UNDER MY DIRECT SUPERVISION AT THE INSTANCE OF WILLIAM AKEL.

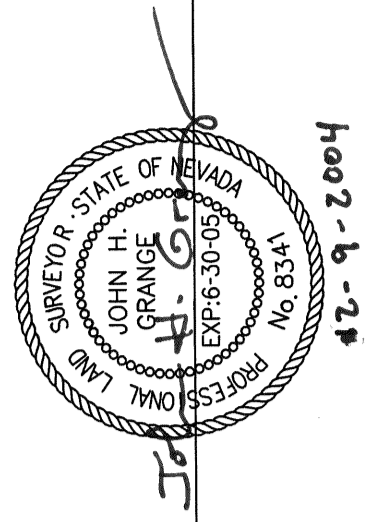
THE LANDS SURVEYED LIE WITHIN:

SECTION 26, 27, 28, 29, 30, 31, 32, 33, 34, 35 AND 36 T30N, R50E, MDB&M EUREKA COUNTY, NEVADA.

THE SURVEY WAS COMPLETED NOVEMBER 26, 2004.

THE PLAT COMPLIES WITH APPLICABLE STATUTES OF THIS STATE AND ANY LOCAL ORDINANCES IN EFFECT ON THE DATE THAT THE SURVEY WAS COMPLETED, AND THE SURVEY WAS CONDUCTED IN ACCORDANCE WITH CHAPTER 625 OF THE NEVADA ADMINISTRATIVE CODE.

THAT THE MONUMENTS DEPICTED ON THIS PLAT ARE OF THE CHARACTER SHOWN, OCCUPY THE POSITIONS INDICATED, AND ARE OF SUFFICIENT DURABILITY.



JOHN H. GRANGE, P.L.S.
CERTIFICATE NO. 8341

BASIS OF BEARINGS

S 89°48' W, BEING THE BEARING OF THE SOUTH LINE OF SECTION 29, T. 30 N., R. 50 E., MDB&M, AS SHOWN BY OFFICIAL GOVERNMENT PLATS AND BY DEED OF BUREAU OF LAND MANAGEMENT FILES.

LEGEND

005-340-10 ASSESSOR'S PARCEL NUMBER AS NOTED

● FOUND NOTCHED STONE OR BRASS CAP

○ REBAR AND CAP SET - PLS 8341

△ CALCULATED POINT - NOTHING SET

--- BOUNDARY LINE

- - - SECTION LINE

005-340-10 ASSESSOR'S PARCEL NUMBER AS NOTED

● FOUND NOTCHED STONE OR BRASS CAP

○ REBAR AND CAP SET - PLS 8341

△ CALCULATED POINT - NOTHING SET

--- BOUNDARY LINE

- - - SECTION LINE

005-340-10 ASSESSOR'S PARCEL NUMBER AS NOTED

● FOUND NOTCHED STONE OR BRASS CAP

○ REBAR AND CAP SET - PLS 8341

△ CALCULATED POINT - NOTHING SET

--- BOUNDARY LINE

- - - SECTION LINE

005-340-10 ASSESSOR'S PARCEL NUMBER AS NOTED

● FOUND NOTCHED STONE OR BRASS CAP

○ REBAR AND CAP SET - PLS 8341

△ CALCULATED POINT - NOTHING SET

--- BOUNDARY LINE

- - - SECTION LINE

005-340-10 ASSESSOR'S PARCEL NUMBER AS NOTED

● FOUND NOTCHED STONE OR BRASS CAP

○ REBAR AND CAP SET - PLS 8341

△ CALCULATED POINT - NOTHING SET

--- BOUNDARY LINE

- - - SECTION LINE

005-340-10 ASSESSOR'S PARCEL NUMBER AS NOTED

● FOUND NOTCHED STONE OR BRASS CAP

○ REBAR AND CAP SET - PLS 8341

△ CALCULATED POINT - NOTHING SET

--- BOUNDARY LINE

- - - SECTION LINE

005-340-10 ASSESSOR'S PARCEL NUMBER AS NOTED

● FOUND NOTCHED STONE OR BRASS CAP

○ REBAR AND CAP SET - PLS 8341

△ CALCULATED POINT - NOTHING SET

--- BOUNDARY LINE

- - - SECTION LINE

005-340-10 ASSESSOR'S PARCEL NUMBER AS NOTED

● FOUND NOTCHED STONE OR BRASS CAP

○ REBAR AND CAP SET - PLS 8341

△ CALCULATED POINT - NOTHING SET

--- BOUNDARY LINE

- - - SECTION LINE

005-340-10 ASSESSOR'S PARCEL NUMBER AS NOTED

● FOUND NOTCHED STONE OR BRASS CAP

○ REBAR AND CAP SET - PLS 8341

△ CALCULATED POINT - NOTHING SET

--- BOUNDARY LINE

- - - SECTION LINE

005-340-10 ASSESSOR'S PARCEL NUMBER AS NOTED

● FOUND NOTCHED STONE OR BRASS CAP

○ REBAR AND CAP SET - PLS 8341

△ CALCULATED POINT - NOTHING SET

--- BOUNDARY LINE

- - - SECTION LINE

005-340-10 ASSESSOR'S PARCEL NUMBER AS NOTED

● FOUND NOTCHED STONE OR BRASS CAP

○ REBAR AND CAP SET - PLS 8341

△ CALCULATED POINT - NOTHING SET

--- BOUNDARY LINE

- - - SECTION LINE

005-340-10 ASSESSOR'S PARCEL NUMBER AS NOTED

● FOUND NOTCHED STONE OR BRASS CAP

○ REBAR AND CAP SET - PLS 8341

△ CALCULATED POINT - NOTHING SET

--- BOUNDARY LINE

- - - SECTION LINE

005-340-10 ASSESSOR'S PARCEL NUMBER AS NOTED

● FOUND NOTCHED STONE OR BRASS CAP

○ REBAR AND CAP SET - PLS 8341

△ CALCULATED POINT - NOTHING SET

--- BOUNDARY LINE

- - - SECTION LINE

005-340-10 ASSESSOR'S PARCEL NUMBER AS NOTED

● FOUND NOTCHED STONE OR BRASS CAP

○ REBAR AND CAP SET - PLS 8341

△ CALCULATED POINT - NOTHING SET

--- BOUNDARY LINE

- - - SECTION LINE

005-340-10 ASSESSOR'S PARCEL NUMBER AS NOTED

● FOUND NOTCHED STONE OR BRASS CAP

○ REBAR AND CAP SET - PLS 8341

△ CALCULATED POINT - NOTHING SET

--- BOUNDARY LINE

- - - SECTION LINE

005-340-10 ASSESSOR'S PARCEL NUMBER AS NOTED

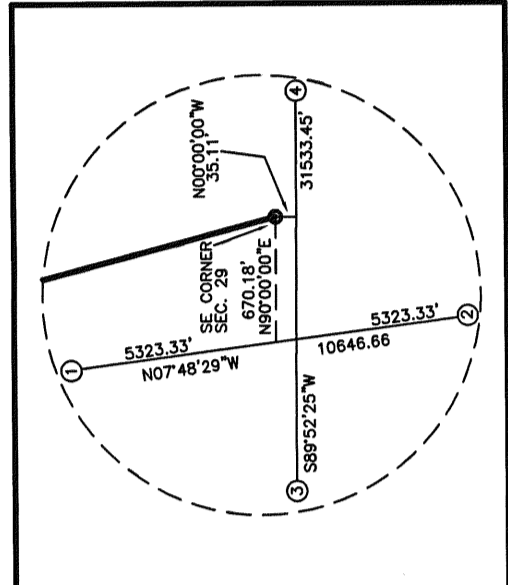
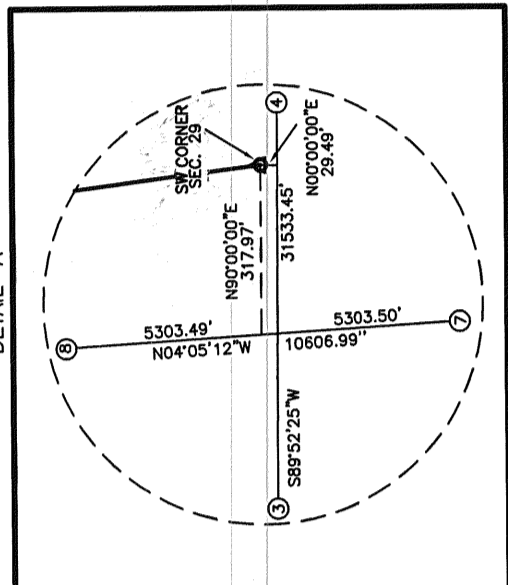
● FOUND NOTCHED STONE OR BRASS CAP

○ REBAR AND CAP SET - PLS 8341

△ CALCULATED POINT - NOTHING SET

--- BOUNDARY LINE

- - - SECTION LINE



APPROXIMATE LATITUDE AND LONGITUDE - FOR REFERENCE ONLY

POINT	LATITUDE	LONGITUDE
A	40°26'13.37" N	116°22'12.02" W
B	40°26'39.45" N	116°22'18.78" W
C	40°26'39.51" N	116°21'46.81" W
D	40°35'18.67" N	116°22'31.66" W
E	40°34'05.17" N	116°25'40.46" W

(SEE EXHIBIT MAP) (SEE EXHIBIT MAP)

COUNTY RECORDER'S CERTIFICATE

FILE NO. 194551 FILED AT THE

REQUEST OF WILLIAM AKEL ON THE

9TH DAY OF DECEMBER, 2004

AT 10 MINUTES PAST 11 O'CLOCK A.M.

M. M. Reba/leah by *Heavenly Records*
Deputy Recorder

EUREKA COUNTY RECORDER

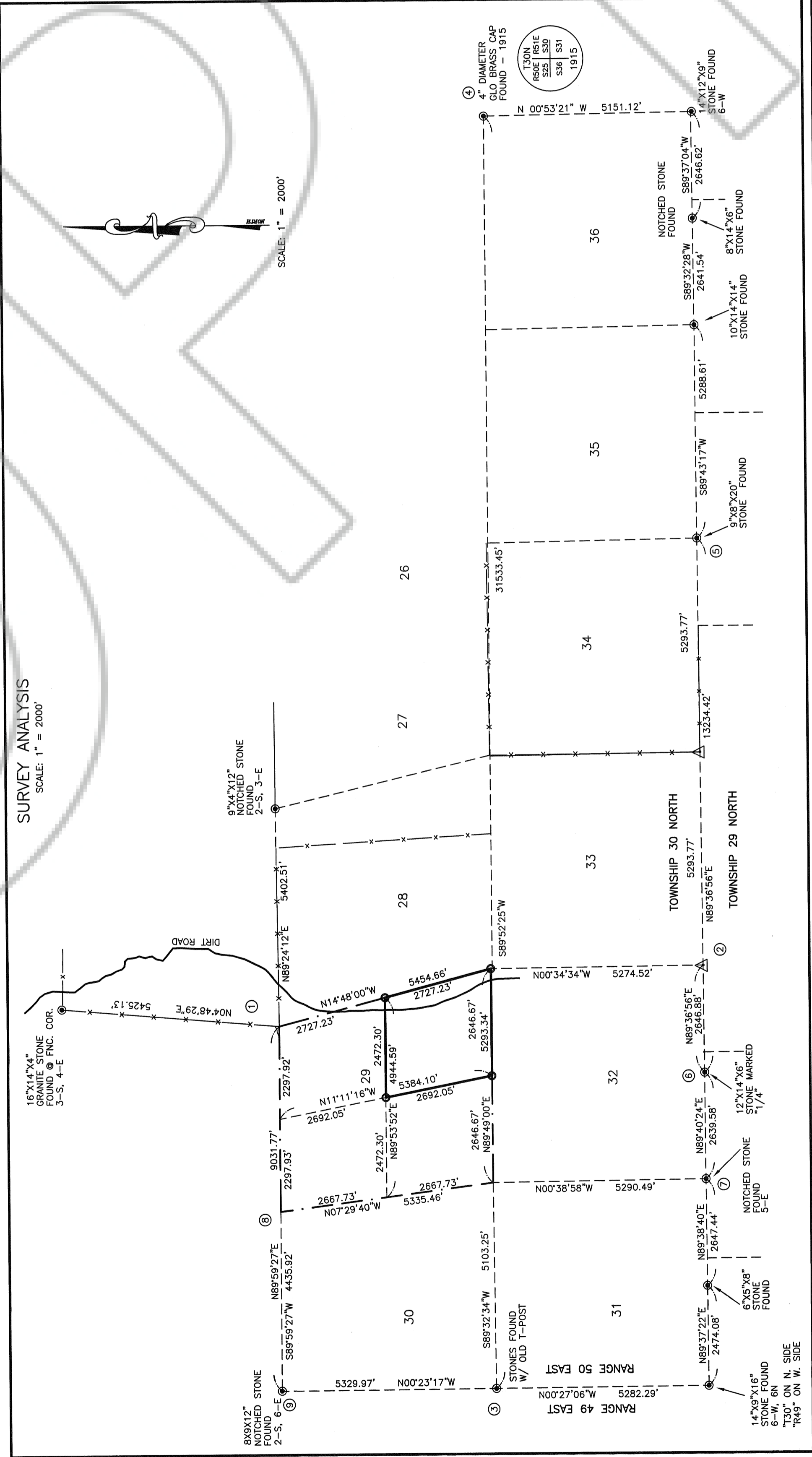
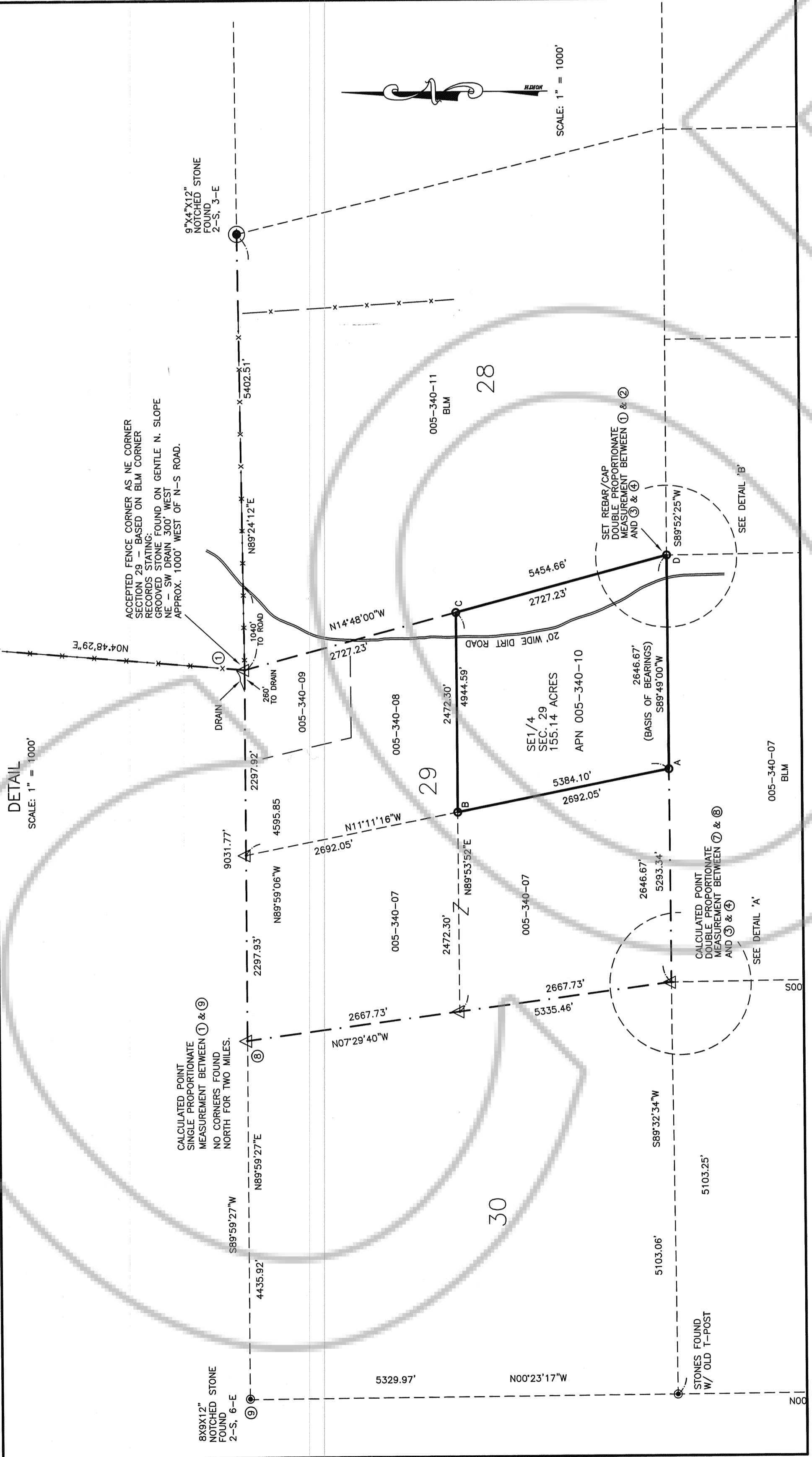
RECORD OF SURVEY FOR WILLIAM AKEL

PREPARED BY: **GRANGE SURVEYING, INC.**

218 HOUSLEY DRIVE
SERRANO CREEK
NEVADA 89815
PH. 775-753-3610

SCALE: AS NOTED

DRAWING NO. Akel-RS.dwg



DRAWING NUMBER

DRAWING NUMBER

DRAWING NUMBER
194551

DRAWING NUMBER
R. D. S. R. 50 E. Sec 29
AKEL