

22

23

T23N
R49E

The NE Corner
of Ass 32 bears
S11°34'W and is
3793' from the
NE corner of
Section 26 T23N
R49E

27

35

34

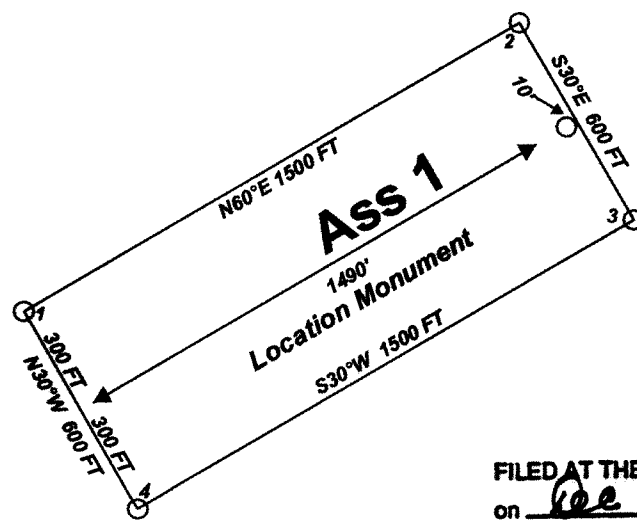
Claim Location Map for Ass 1-42
Map 1 of 1

"Ass" lode claims 1 - 26 and 28 were
located on Sept. 14, 2004 and
"Ass" lode claims 27, & 29-42 were
located on Sept. 15, 2004
Sections 22-23, 25-27 and 35-36
Township 23 North
Range 49 East
Eureka County, Nevada

Locator:
White Knight Gold (U.S.) Inc.
121 Woodland Ave Suite 140
Reno Nv. 89523

Notes:
Location Monuments are set 10' from
claim end lines unless noted otherwise.
All location and corner monuments are
2" X 2" X 4' wooden posts with scribed
metal tags. All claims are 600' by 1500'
unless noted otherwise.

Typical Claim



FILED AT THE REQUEST OF White Knight Gold
on Feb 9 04 at 25 mins past 1 P.M.
RECORDS OF EUREKA COUNTY, NEVADA M. N. REBALEATI, Recorder
File No. 194596 Fee \$34.00

Scale 1:6000
1" = 500'
0 1500'
FEET

MINING CLAIM LOCATION MAP
Ass 1 - 42
Lode Mining Claims
White Knight Gold (U.S.) Inc.
121 Woodland Ave Suite 140
Reno Nv. 89523
Ass_ClaimMap_1_42.dwg
Sept. 8, 2004
Drawn By: G.I.S. Land Services
Surveyed By: T&T Exploration L.L.C.
Datum: 1927 Projection: UTM Zone 11
Units: Feet