

13

18

24

T22N R49E

T22N R50E

25

30

The SW Corner
of KEL 140 bears
N62°59'E and is
2590' from the
SW corner of
Section 19 T22N
R50E

CSAMT 31 • 300'

KEL 138 • 600'

KEL 139 • 300'

KEL 140 • 1500'

CSAMT 87

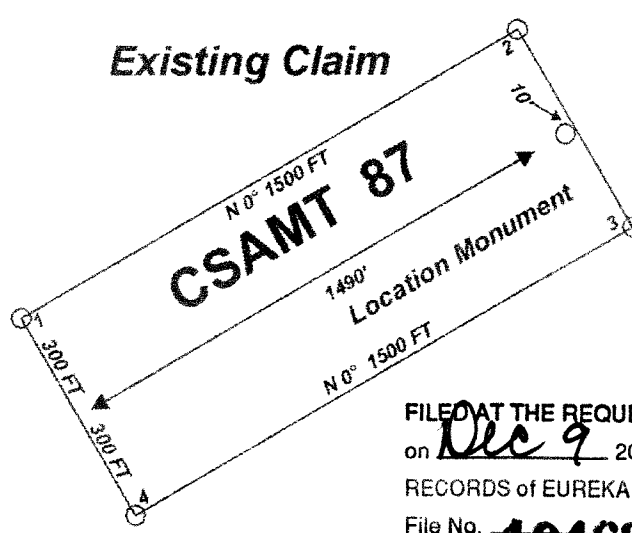
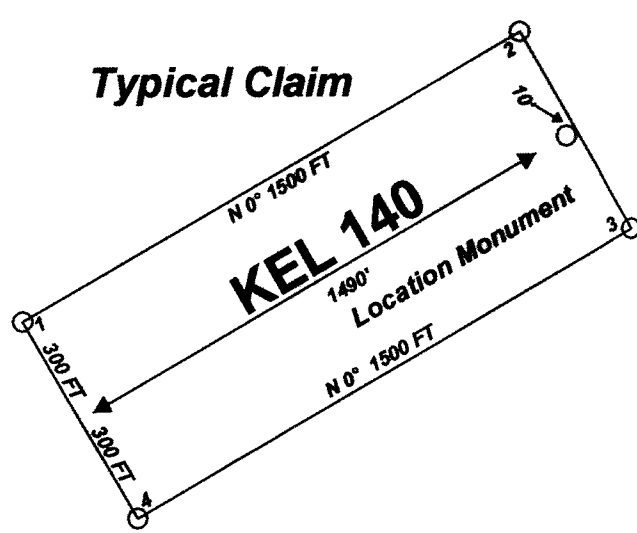
N30°W
N60°E

Claim Location Map for KEL 138-140

"KEL" lode claims 138 - 140 were
located on Sept. 15, 2004 in
Section 19
Township 22 North
Range 50 East
Eureka County, Nevada

Locator:
White Knight Gold (U.S.) Inc.
121 Woodland Ave Suite 140
Reno NV. 89523

Notes:
Location Monuments are set 10' from
claim end lines unless noted otherwise.
All location and corner monuments are
2" X 2" X 4' wooden posts with scribed
metal tags. All claims are 600' by 1500'
unless noted otherwise.



FILED AT THE REQUEST OF *White Knight Gold*
on *Dec 9 2004* at *46* mins. past *1 P*.M.
RECORDS OF EUREKA COUNTY, NEVADA M. N. REBALEATI, Recorder
File No. *194620* Fee \$ *44.00*

Scale 1:6000
1" = 500'

MINING CLAIM LOCATION MAP KEL 138 - 140 Lode Mining Claims
White Knight Gold (U.S.) Inc. 121 Woodland Ave Suite 140 Reno NV. 89523
KEL_138_140.dwg November 28, 2004
Drawn By: G.J.S. Land Services Surveyed By: T&T Exploration L.L.C. Datum: 1927 Projection: UTM Zone 11 Units: Feet