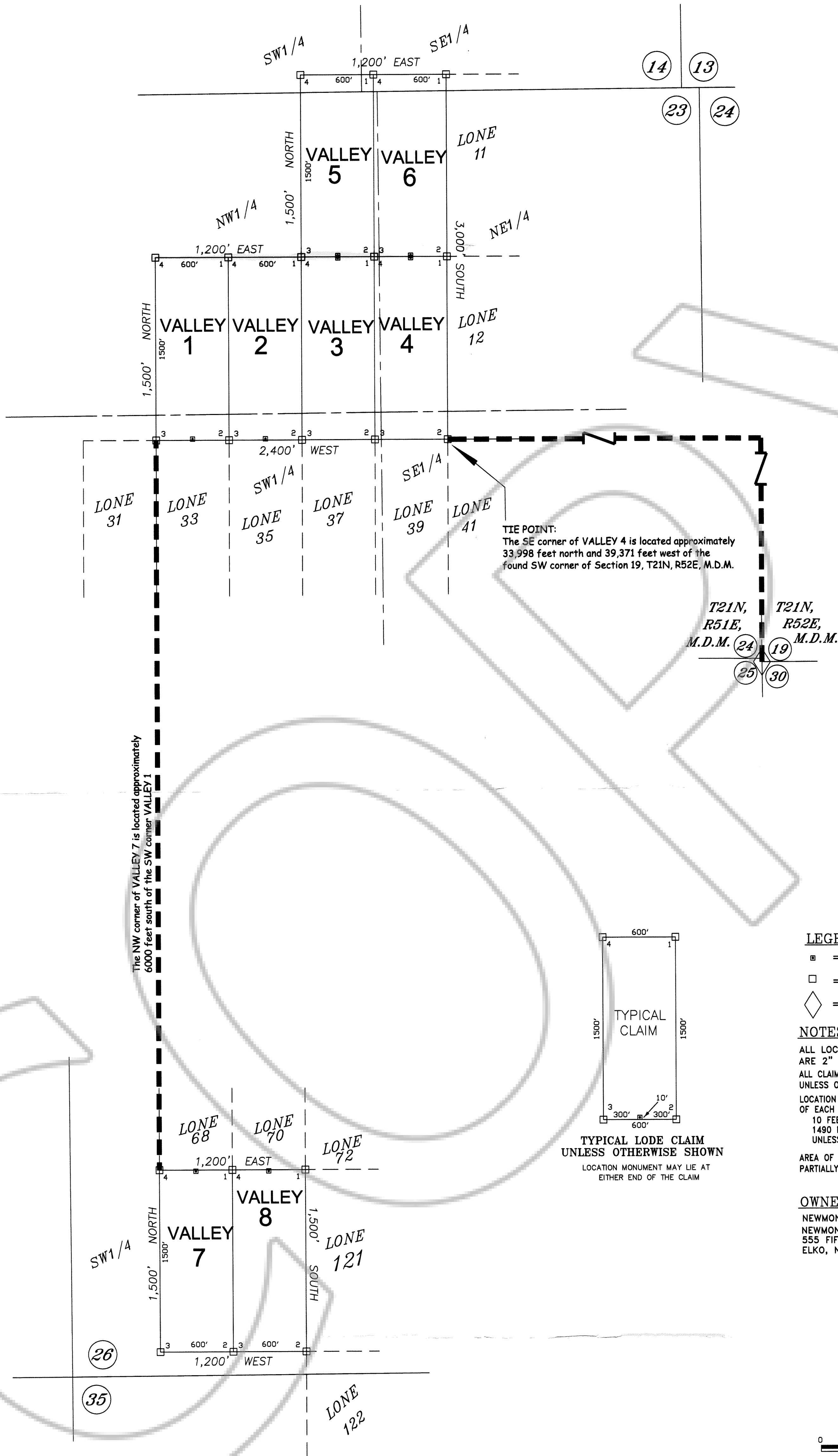


T22N R50E MDM



**LEGEND:**

- 2" x 2" x 4' WOOD POST LOCATION MONUMENT
- 2" x 2" x 4' WOOD POST CLAIM CORNER
- FOUND SURVEY MONUMENT

**NOTES:**

ALL LOCATION MONUMENTS AND CLAIM CORNERS ARE 2" x 2" x 4' WOOD.

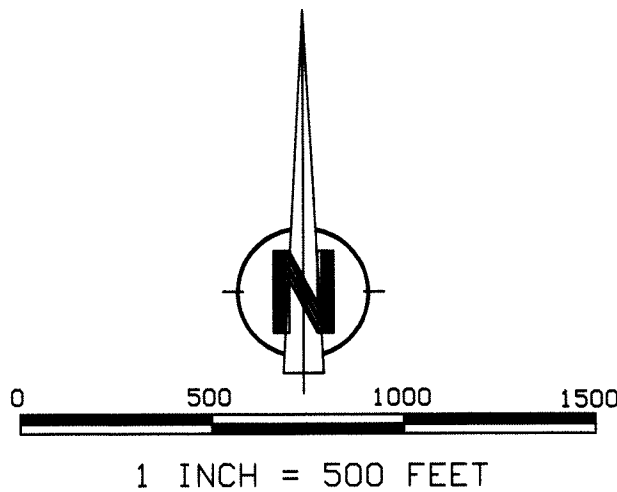
ALL CLAIMS ARE 1500' LONG BY 600' WIDE UNLESS OTHERWISE SHOWN.

LOCATION MONUMENTS ARE SET ON THE CENTERLINE OF EACH CLAIM, 10 FEET FROM THE NEAR ENDLINE AND 1490 FEET FROM THE OPPOSITE ENDLINE, UNLESS OTHERWISE SHOWN.

AREA OF INTEREST CONTAINS SURVEYED, PARTIALLY SURVEYED, AND UNSURVEYED LANDS.

**OWNER**

NEWMONT USA LIMITED, d/b/a  
NEWMONT MINING CORPORATION  
555 FIFTH STREET  
ELKO, NEVADA 89801



Claim Map of  
**VALLEY 1 - 8**

Lode Claims located within  
Sections 14, 23 and 26, T22N, R50E, MDM  
Eureka County, Nevada

**NEWMONT MINING CORPORATION**

FILED AT THE REQUEST OF *Newmont USA Ltd*  
on *Jan 6* 20 *05*, at *42* mins. past *11* A.M.  
RECORDS OF EUREKA COUNTY, NEVADA M. N. REBALEATI, Recorder  
File No. **194820** Fee \$ *124.00*