

34

35

36

3000' E-W

FMC 31	FMC 57
FMC 32	FMC 58
FMC 33	FMC 59
FMC 34	FMC 60
FMC 35	FMC 61
FMC 36	FMC 62
FMC 37	FMC 63
FMC 38	FMC 64
FMC 39	FMC 65
FMC 40	FMC 66
FMC 41	FMC 67
FMC 42	FMC 68
FMC 43	FMC 69
FMC 44	FMC 70
FMC 45	FMC 71
FMC 46	FMC 72
FMC 47	FMC 73
FMC 48	FMC 74
FMC 49	FMC 75

T26N

T25N

3

11,400' N-S

11,400' N-S

2

R54E

10

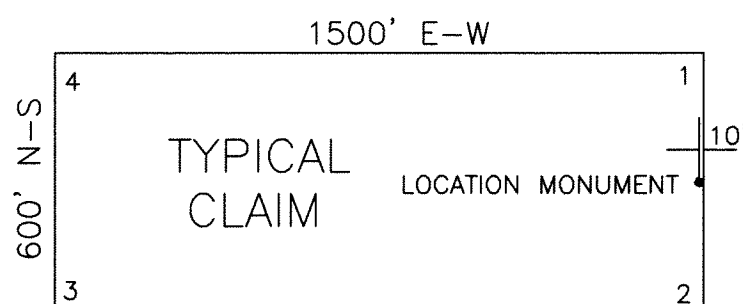
11

3000' E-W

FILED AT THE REQUEST OF *Clarence Wendt*
 on *Jan 7* 20 *05* at *7:27* mins past *10* P.M.
 RECORDS OF EUREKA COUNTY, NEVADA M. N. REBALEATI, Recorder
 File No. **194946** Fee \$ *524.00*



SCALE
U.S. Survey Foot



ALL CLAIMS ARE 1500' x 600'
UNLESS OTHERWISE NOTED.
ALL MONUMENTS ARE 2" x 2" x 4"
WOODEN POSTS.

CLAIM LOCATION DATES:
FMC 40-49, 66-75: December 13, 2004
FMC 31-39, 57-68: December 14, 2004

TIE POINT:
 The NE corner of FMC 44 is located approximately 250' south and 400' west of the SW corner of section 2, T25N, R54E, M.D.M.

Sections projected using Nevada GCDB
Nevada State Plane 1927

LODE MINING CLAIM MAP
FMC 31-49, 57-75

T25N, R54E, SECTIONS 2, 3, 10 & 11, M.D.M.
 T26N, R54E, SECTIONS 34-36, M.D.M.
 EUREKA COUNTY, NEVADA

CLARENCE J. WENDT
 5004 East Albuquerque Rd.
 Reno, Nevada 89511

Drawn By: *ARD* | *DECEMBER 2004*

Survey and Map by:
 MINERAL EXPLORATION SERVICES, LLC
 5655 RIGGINS COURT, SUITE 15
 RENO, NEVADA 89502