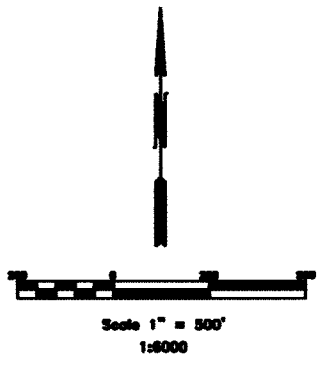
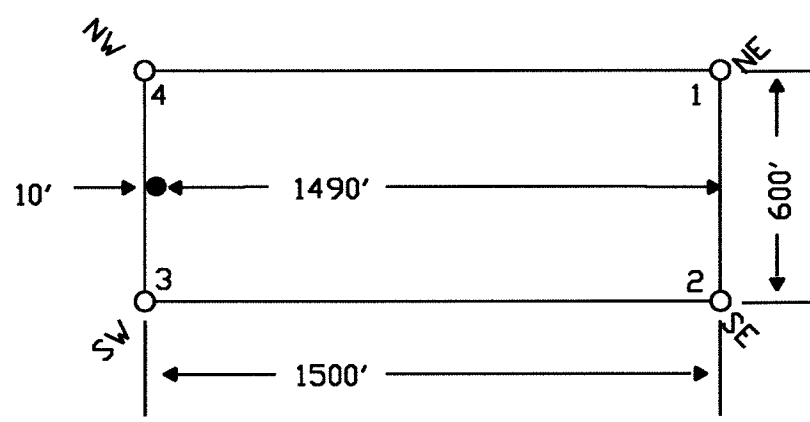


TYPICAL CLAIMS



TIE POINT DATA:
THE NORTHEAST CORNER OF HWY 28 LIES APPROXIMATELY
9,300 FEET WEST AND 3,302 FEET NORTH OF THE NORTHEAST
CORNER OF SECTION 24, T.20N., R.52E., M.D.B.M.

			29	••	28
15	14	13	27	••	26
.	.	.	25	••	24
	1	••	2		23
	3	••	4		21
	5	••	6	15 14 22 23	19
	7	••	8		17
	9	••	10		11
					12

LOCATION DATES:
November 9, 2004 - HWY 1-10,13-15
January 18, 2005 - HWY 11-12,16-29

NOTES:
LOCATION MONUMENTS SET 10' FROM CLAIM END
CENTERLINES. ALL LOCATION MONUMENTS AND CLAIM
POSTS ARE 2"x2"x4' WOODEN STAKES.
DASHED SECTION LINES INDICATE PROJECTED SECTIONS.

FILED AT THE REQUEST OF *Great American Minerals*
on Sub 1 at 05 mins. past 30 M.
RECORDS OF EUREKA COUNTY, NEVADA M. N. REBALSKI, Recorder
File No. **195449** Fee \$ 244.00



Locator:
Great American Minerals, Inc.
9051 S. 1075 W., Ste B-301, West Jordan, UT 84088
HWY 1-29 Lode Claims
T.20N., R.52E.; Eureka County, Nevada

DATE: January 2005
DRAWN BY: [Signature]