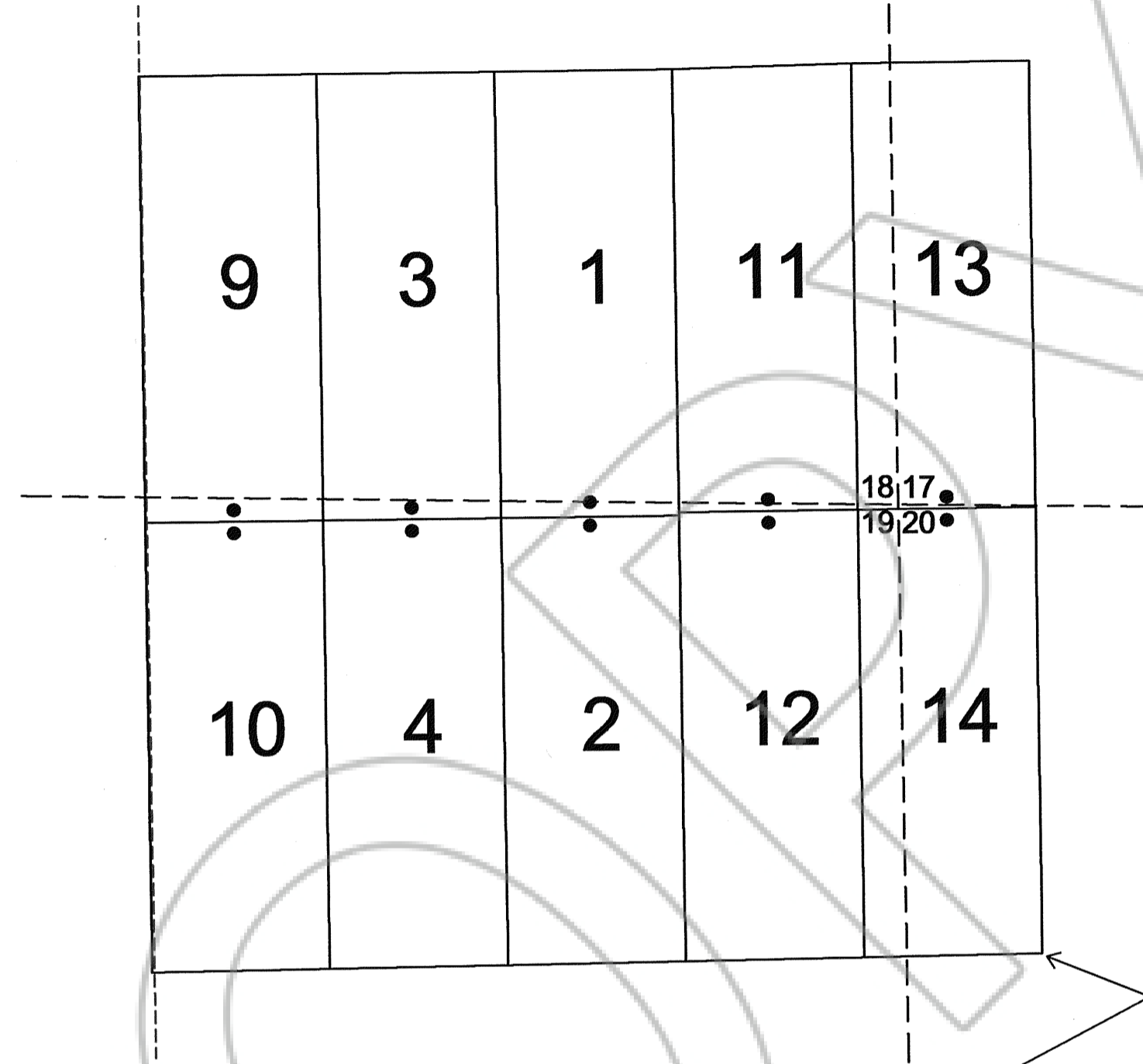


NOTES:  
LOCATION MONUMENTS SET 10' FROM CLAIM END  
CENTERLINES. ALL LOCATION MONUMENTS AND CLAIM  
POSTS ARE 2"x2"x4' WOODEN STAKES.

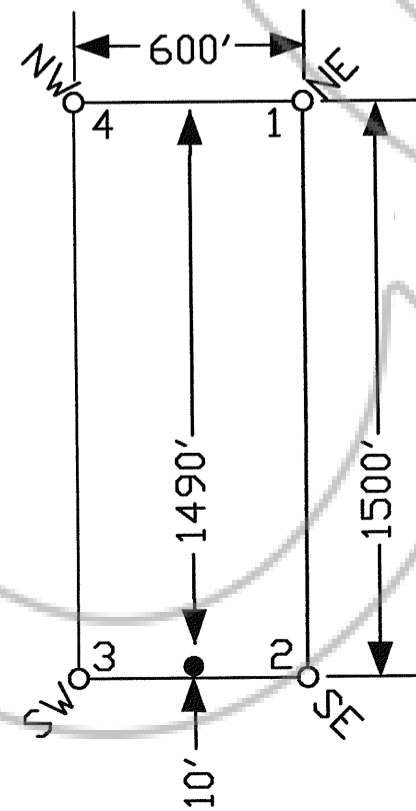
T.24N.,R.51E.

DASHED SECTION LINES INDICATE PROJECTED SECTIONS.



TIE POINT DATA:  
THE SOUTHEAST CORNER OF GABLE 14 LIES APPROXIMATELY  
10,881 FEET EAST AND 6,917 FEET SOUTH OF THE NORTHEAST  
CORNER OF SECTION 14, T.24N., R.50E., M.D.B.M.

TYPICAL CLAIM



LOCATION DATES:  
January 22, 2005 - Gable 1-4  
December 1, 2004 - Gable 11-14  
December 2, 2004 - Gable 9-10

(10 Total Claims)

FILED AT THE REQUEST OF Great American Minerals Scale 1" = 500'  
on Jul 2 2005, at 2 mins. past 4 P.M. 1:6000  
RECORDS of EUREKA COUNTY, NEVADA M. N. REBALEATI, Recorder 154.00  
File No. 195459



340 - 5th STREET  
PH: (775) 778-0608 ELKO, NV 89901 FAX: (775) 778-0607

Great American Minerals, Inc.  
9051 S. 1075 W., Ste B-301, West Jordan, UT 84088  
Gable 1-4, 9-14 Lode Claims  
T.24N., R.51E.; Eureka County, Nevada

DATE: January 2005