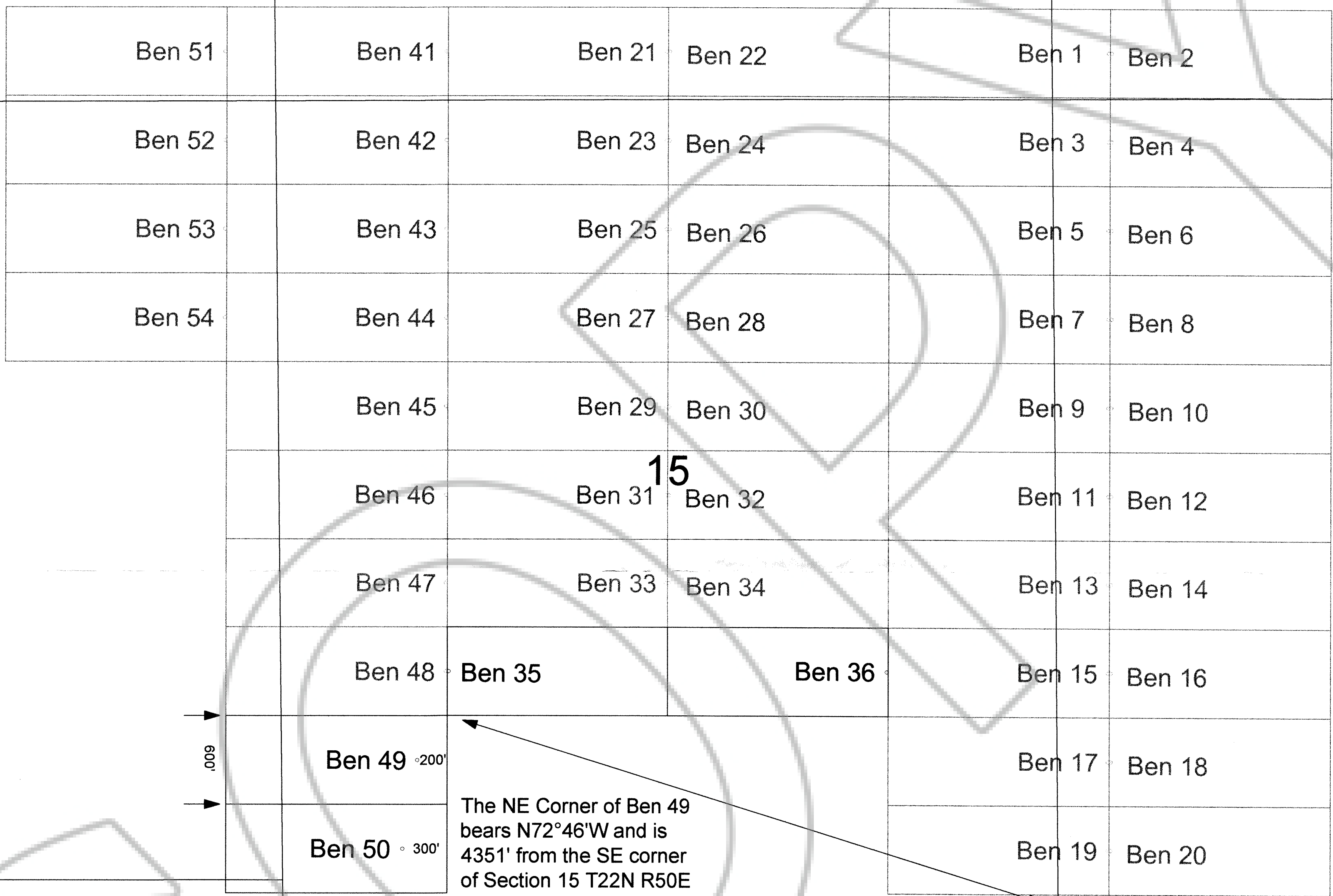


195507

9

10

11



16

15

14

T22N  
R50E

21

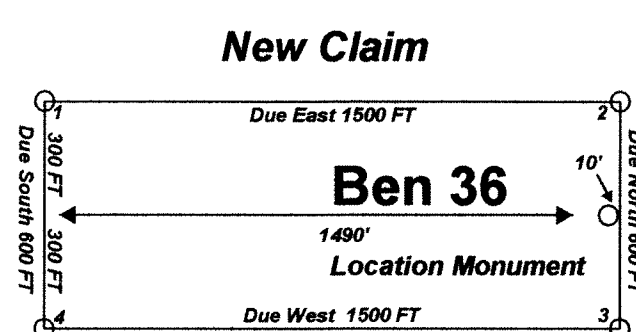
22

23

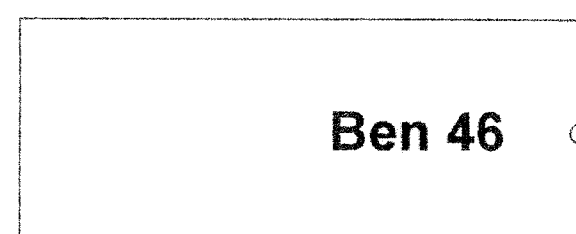
**Claim Location Map for Ben 35, 36, 49, and 50**  
**Map 1 of 1**

"Ben" lode claims 35, 36, 49, and 50 were located on Nov. 16, 2004 in Sections 15-16 and 21 Township 22 North Range 50 East Eureka County, Nevada

Scale 1:6000  
1" = 500'



Existing Claim



Notes:  
Location Monuments are set 10' from claim end lines unless noted otherwise. All location and corner monuments are 2" X 2" X 4' wooden posts with scribed metal tags. All claims are 600' by 1500' unless noted otherwise.

Locator:  
White Knight Gold (U.S.) Inc.  
121 Woodland Ave Suite #140  
Reno Nv. 89523-8906

FILED AT THE REQUEST OF *White Knight Gold*  
on *Feb 7* 20 *05* at *54* miles past *120* M  
RECORDS OF EUREKA COUNTY, NEVADA M. N. REBALEATI, Recorder  
File No. **195507** Fee \$ *64.00*

MINING CLAIM LOCATION MAP  
Ben 35, 36, 49 and 50  
Lode Mining Claims  
White Knight Gold (U.S.) Inc.  
121 Woodland Ave Suite #140  
Reno Nv. 89523-8906  
Ben\_35\_50\_Claim\_Map.dwg  
January 7, 2005  
Drawn By: G.I.S. Land Services  
Surveyed By: T&T Exploration L.L.C.  
Datum: 1927 Projection: UTM Zone 11  
Units: Feet