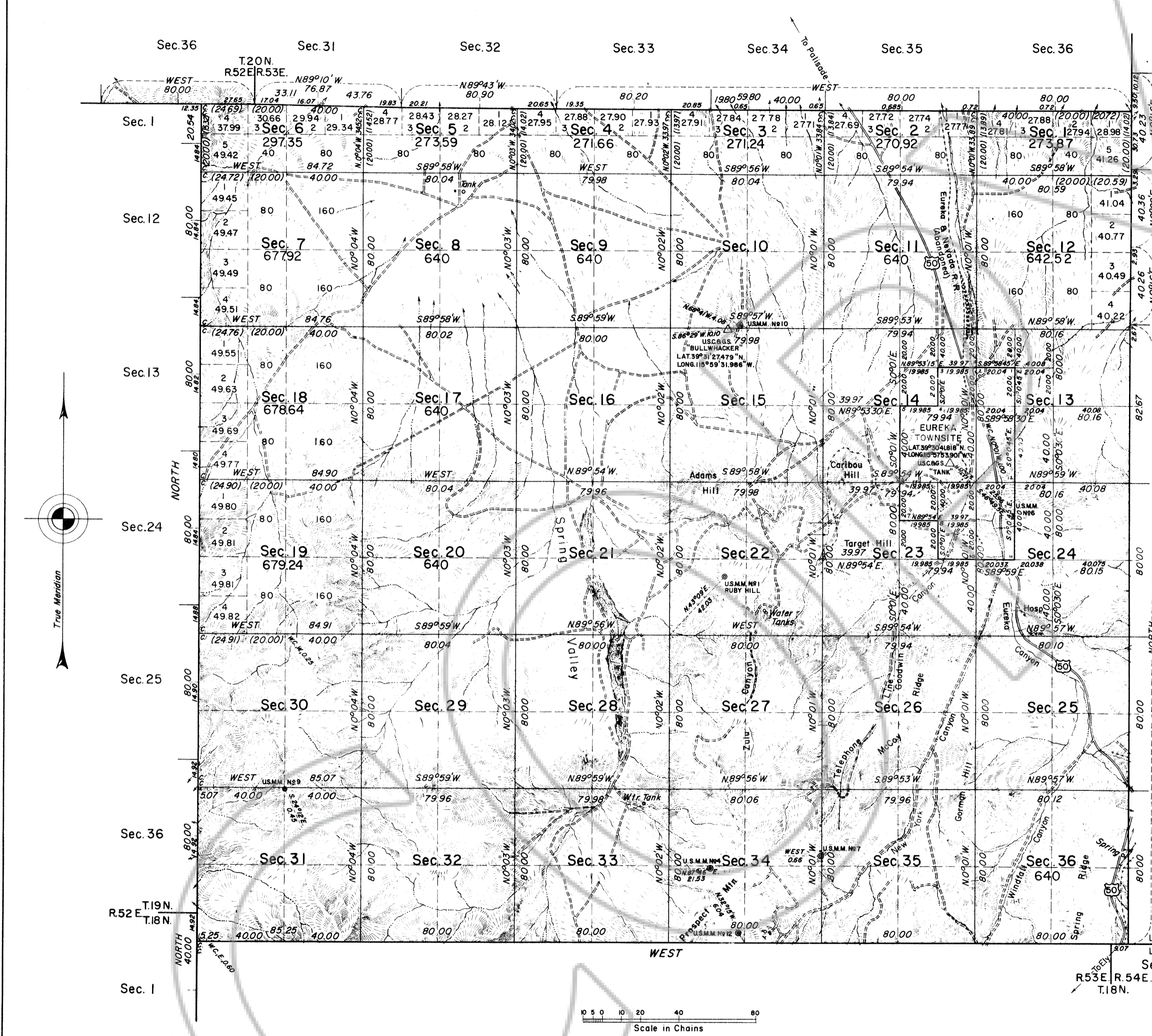


# TOWNSHIP 19 NORTH, RANGE 53 EAST, OF THE MOUNT DIABLO MERIDIAN, NEVADA.



History of earlier surveys is contained in the field notes.

This plat represents a dependent resurvey of a portion of the West boundary of T. 19 N., R. 54 E., designed to restore the corners in their original locations according to the best available evidence; an independent resurvey of a portion of the South boundary of T. 20 N., R. 52 E., superseding the original survey made by E. B. Monroe in 1884; an independent resurvey of the East boundary of T. 19 N., R. 52 E., superseding the original survey made by Bridges and Eaton in 1879; the survey of a portion of the East boundary; and survey of the South boundary and subdivisional lines of T. 19 N., R. 53 E., Mount Diablo Meridian, Nevada. Lottings in secs. 10, 13 through 16, 21 through 35, and tabulation of mineral surveys are shown on Sheets 2 through 6, inclusive. Lottings in Eureka Townsite are shown on plats accepted November 19, 1937.

Survey executed by Emil Voigt, Theodore H. Drummond, and Carl S. Swanholm, April 10, 1935 to September 15, 1937, under special instructions dated November 23, 1934 for Group 185, Nevada.

See Sheet No. 3 for lottings and areas in secs. 10, 15, 16, 21, and 22.

See Sheet No. 2 for lottings and areas in secs. 13, 14, 23, and 24.

See Sheet No. 5 for lottings and areas in secs. 25, 26, 27, 34, and 35.

See Sheet No. 4 for lottings and areas in secs. 28 through 33.

See Sheet No. 6 for tabulation of mineral surveys.

Topography taken from U. S. Geological Survey topographic sheets.

UNITED STATES DEPARTMENT OF THE INTERIOR  
BUREAU OF LAND MANAGEMENT  
Washington, D. C. May 13, 1958

This plat is strictly conformable to the approved field notes, and the survey, having been correctly executed in accordance with the requirements of law and the regulations of this Bureau, is hereby accepted.

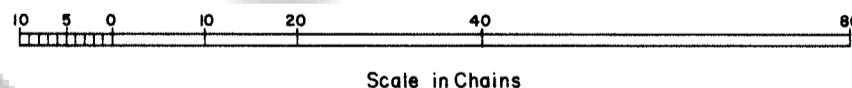
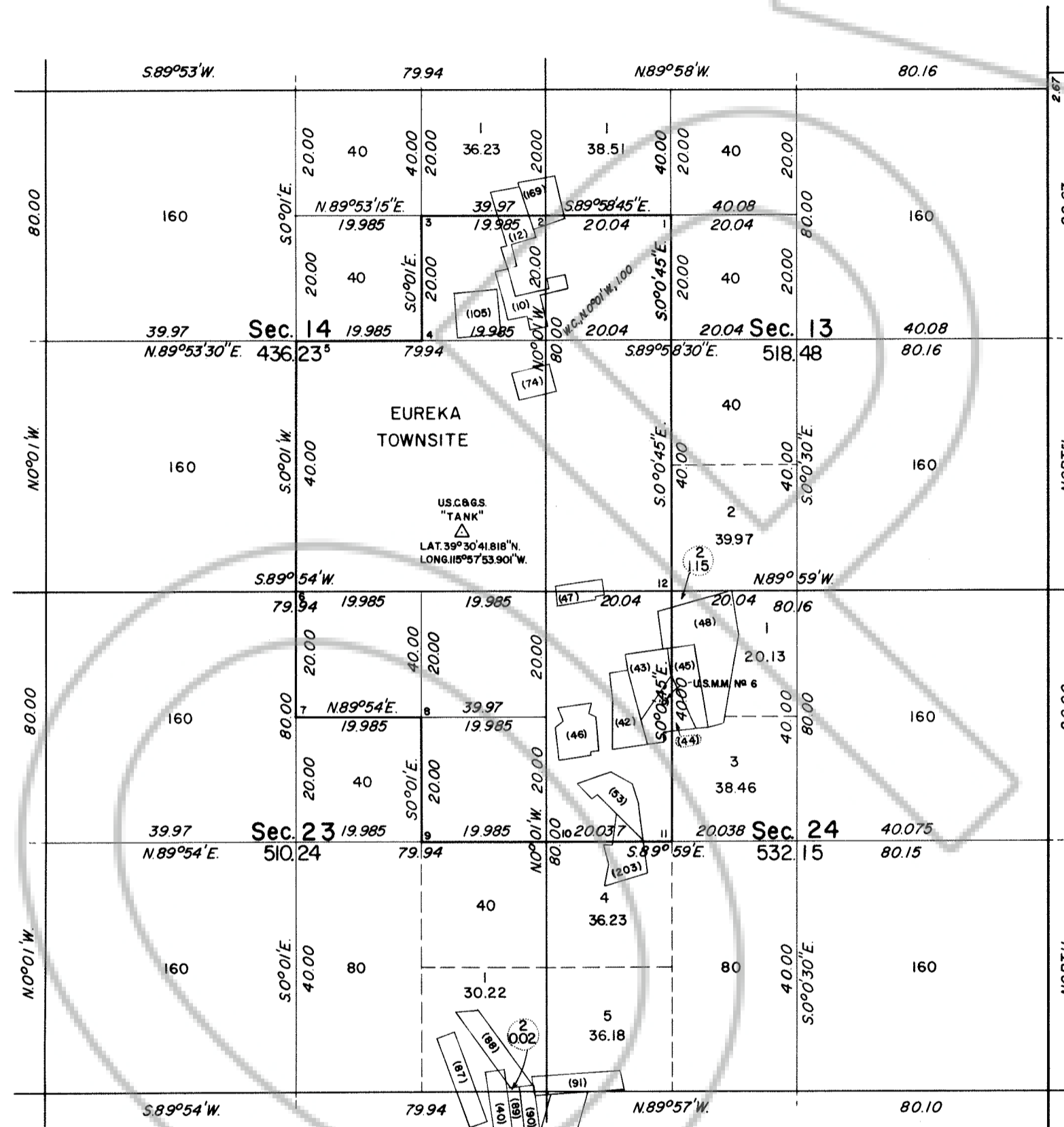
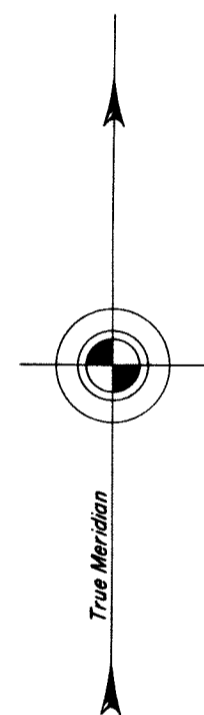
For the Director  
*Carl G. Harrington*  
Cadastral Engineering Staff Officer

Area Surveyed 19,016.20 Acres.  
Area Segregated 2,041.95 "  
Total Area 21,058.15 "

195601

# TOWNSHIP 19 NORTH, RANGE 53 EAST, OF THE MOUNT DIABLO MERIDIAN, NEVADA.

## SEGREGATION PLAT OF SECTIONS 13, 14, 23 AND 24



UNITED STATES DEPARTMENT OF THE INTERIOR  
 BUREAU OF LAND MANAGEMENT  
 Washington, D. C. May 13, 1958

This plat is strictly conformable to the approved field notes, and the survey, having been correctly executed in accordance with the requirements of law and the regulations of this Bureau, is hereby accepted.

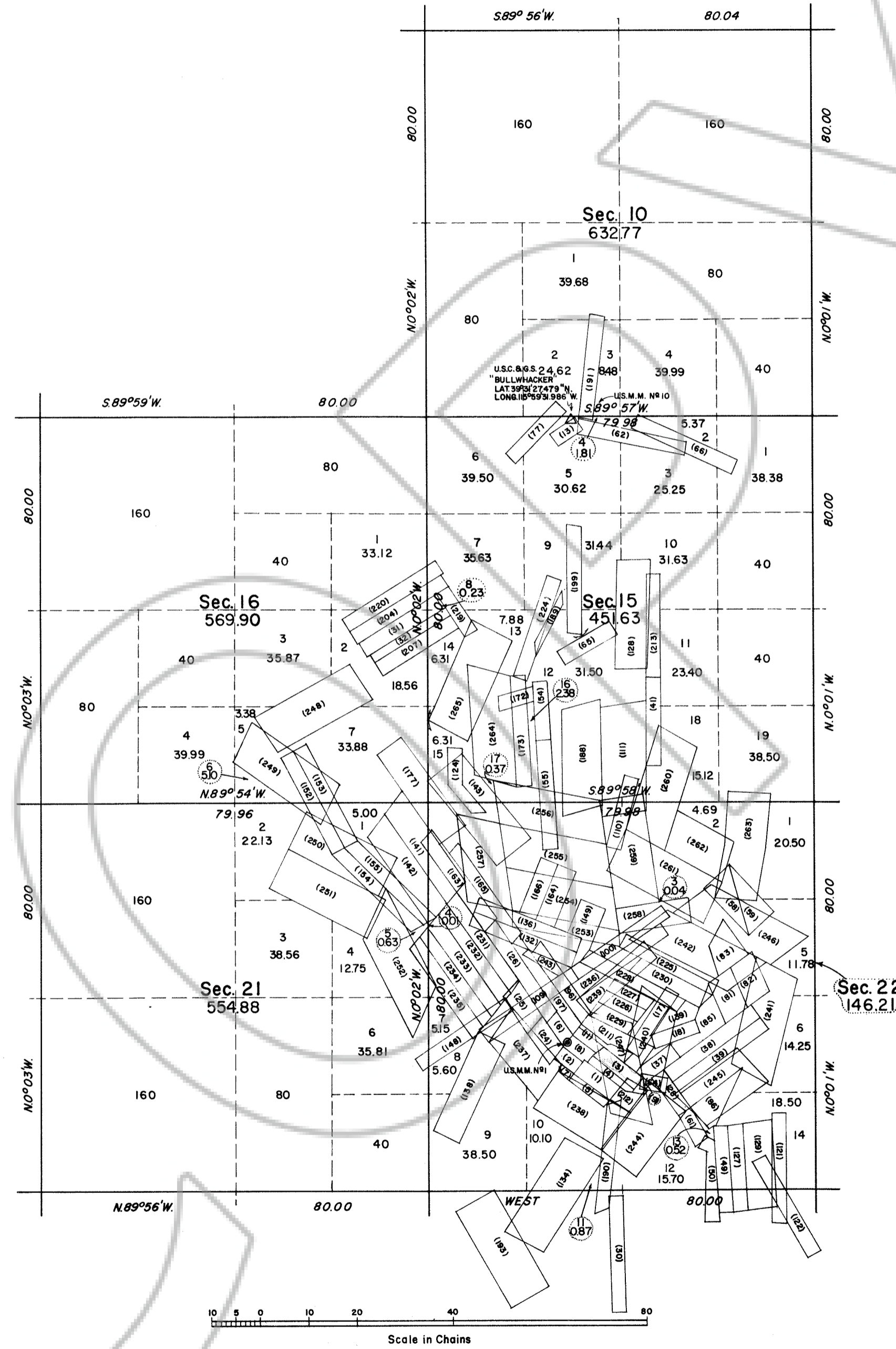
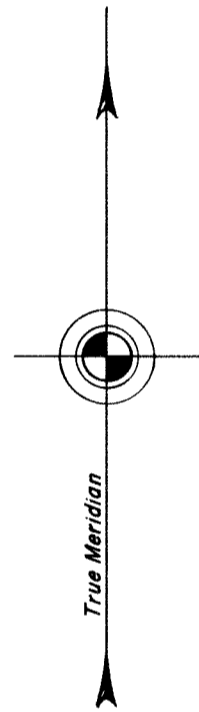
For the Director  
*Earl G. Harrington*  
 Cadastral Engineering Staff Officer

195601

M.S. 1958

# TOWNSHIP 19 NORTH, RANGE 53 EAST, OF THE MOUNT DIABLO MERIDIAN, NEVADA.

## SEGREGATION PLAT OF SECTIONS 10, 15, 16, 21, AND 22



UNITED STATES DEPARTMENT OF THE INTERIOR  
BUREAU OF LAND MANAGEMENT  
Washington, D. C.      May 13, 1958

This plat is strictly conformable to the approved field notes, and the survey, having been correctly executed in accordance with the requirements of law and the regulations of this Bureau, is hereby accepted.

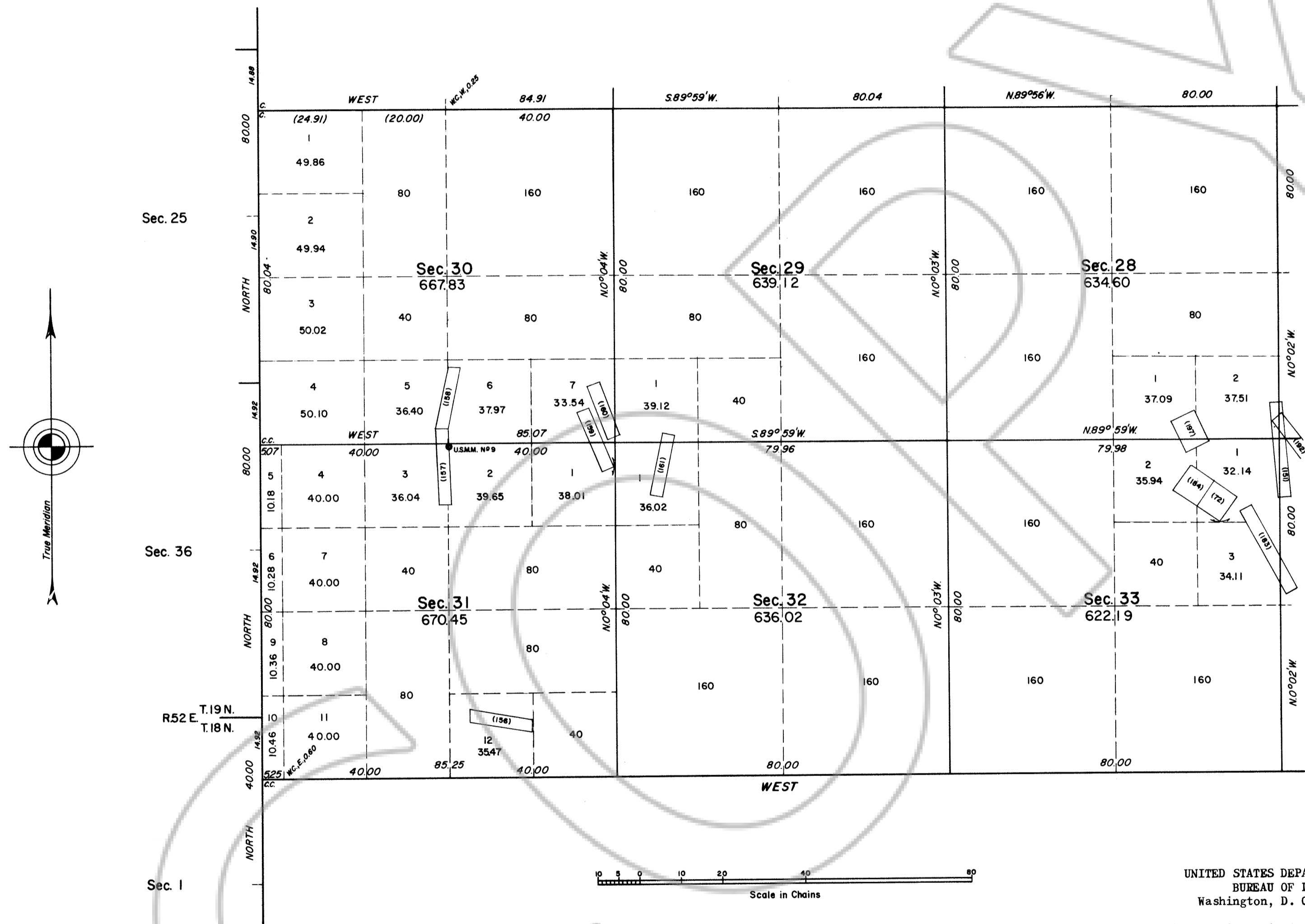
For the Director  
*Earl G. Harrington*  
Cadastral Engineering Staff Officer

195601

M.S.

# TOWNSHIP 19 NORTH, RANGE 53 EAST, OF THE MOUNT DIABLO MERIDIAN, NEVADA.

## SEGREGATION PLAT OF SECTIONS 28, 29, 30, 31, 32, AND 33



UNITED STATES DEPARTMENT OF THE INTERIOR  
 BUREAU OF LAND MANAGEMENT  
 Washington, D. C. May 13, 1958

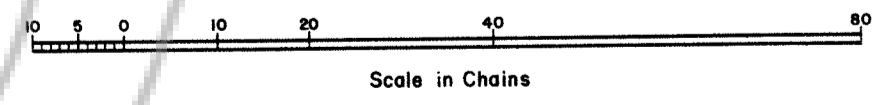
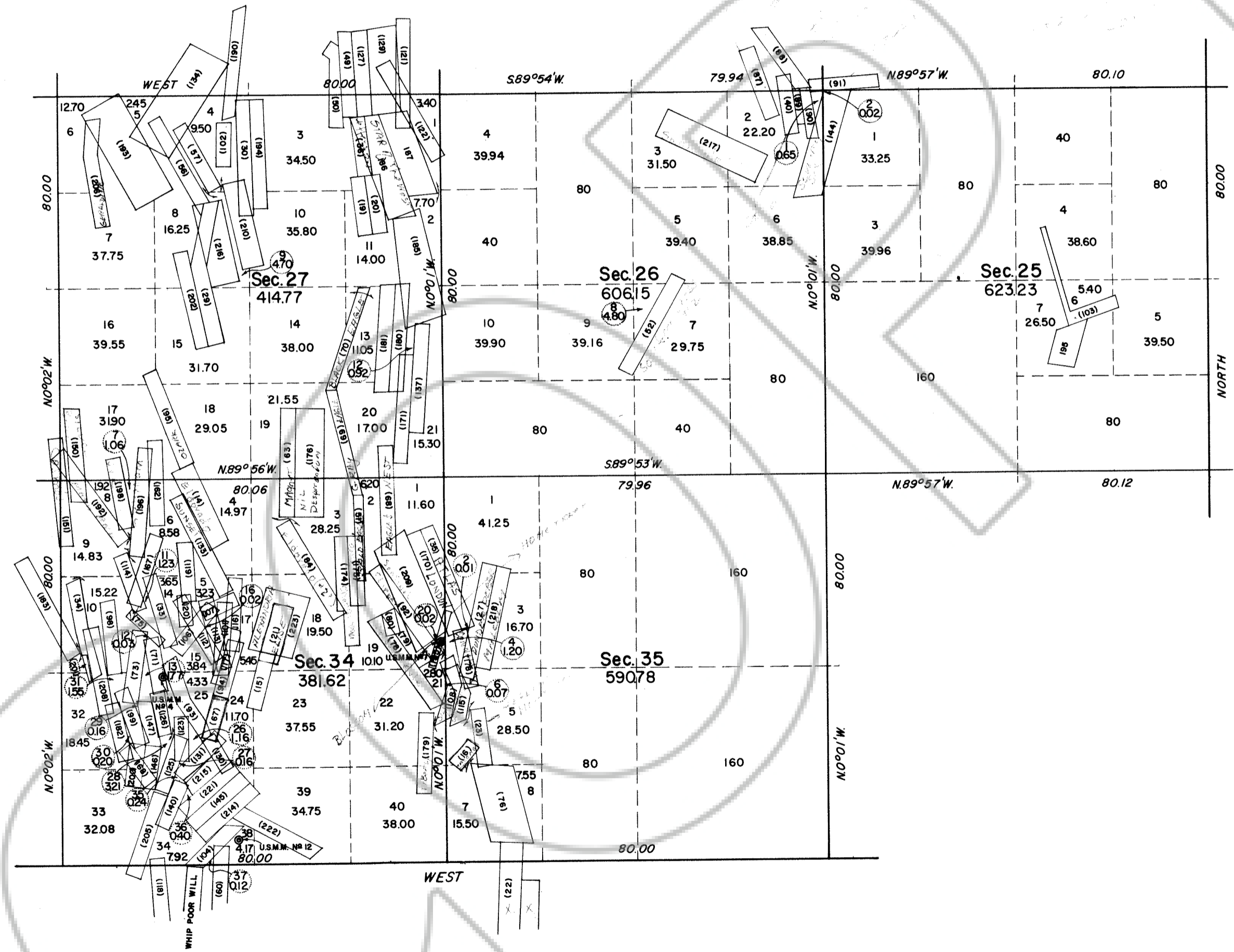
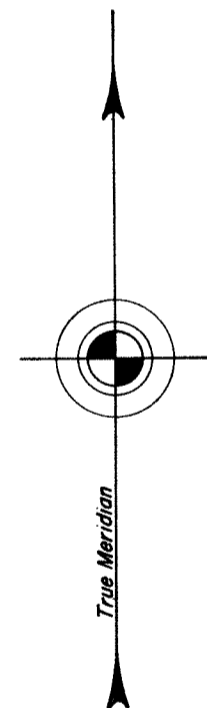
This plat is strictly conformable to the approved field notes, and the survey, having been correctly executed in accordance with the requirements of law and the regulations of this Bureau, is hereby accepted.

For the Director

*Earl G. Harrington*  
 Cadastral Engineering Staff Officer

195601

TOWNSHIP 19 NORTH, RANGE 53 EAST, OF THE MOUNT DIABLO MERIDIAN, NEVADA.  
SEGREGATION PLAT OF SECTIONS 25, 26, 27, 34, AND 35



UNITED STATES DEPARTMENT OF THE INTERIOR  
BUREAU OF LAND MANAGEMENT  
Washington, D. C. May 13, 1958.

This plat is strictly conformable to the approved field notes, and the survey, having been correctly executed in accordance with the requirements of law and the regulations of this Bureau, is hereby accepted.

For the Director  
*Earl G. Harrington*  
Cadastral Engineering Staff Officer

