

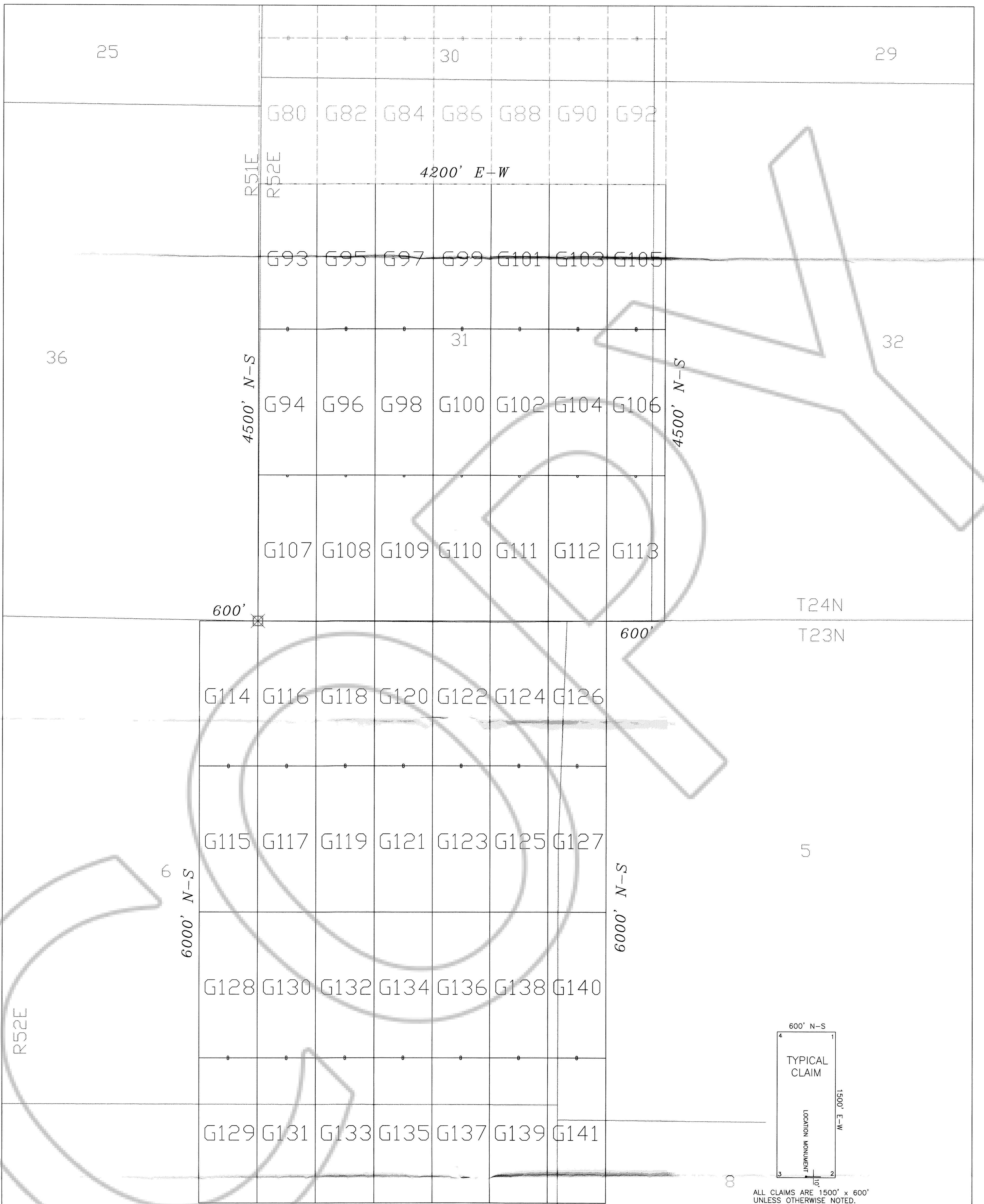
Sections are projected using Nevada GCDB
Nevada State Plane 1927

CLAIM LOCATION DATES:
 G 1-56: December 6, 2004
 G 57-64: December 7, 2004
 G 65-92: December 5, 2004

TIE POINT:
 The SW corner of G 80 is located
 approximately 4500' north of the
 SW corner of section 31, T24N,
 R52E, M.D.M.

LODE MINING CLAIM MAP G1-G141 CLAIMS		
T23-24N, R51-52E, M.D.M. EUREKA COUNTY, NEVADA		
ELECTRUM RESOURCES, LLC 720 FAITH AVENUE ASHLAND, OREGON 91520		
Sheet 1 of 2	Drawn By: AD	December 2004
Survey and Map by: Mineral Exploration Services, LLC, 5655 Riggins Court, Suite 15, Reno, Nevada 89502		

FILED AT THE REQUEST OF *Electrum Resources*
 on *Dec 22 2005* at *30* mins past *12* M
 RECORDS OF EUREKA COUNTY, NEVADA M. N. REBALEATI, Recorder
 File No. **196383** Fee \$ *219.00*



CLAIM LOCATION DATES:
 G 93-106: December 5, 2004
 G 107-141: December 4, 2004

TIE POINT:
 The NE corner of G 114 is located approximately at the SW corner of Section 31, T24N, R52E M.D.M.

**LODE MINING CLAIM MAP
 G1-G141 CLAIMS**

T23-24N, R51-52E, M.D.M.
 EUREKA COUNTY, NEVADA

ELECTRUM RESOURCES, LLC
 720 FAITH AVENUE
 ASHLAND, OREGON 91520

Sheet 2 of 2 | Drawn By: AD | December 2004

Survey and Map by:
 Mineral Exploration Services, LLC, 5655 Riggins Court, Suite 15, Reno, Nevada 89502

Sections are projected using Nevada GCDB
 Nevada State Plane 1927

FILED AT THE REQUEST OF *Electrum Resources*
 on *Feb 22* 20 *05* at *11:12* AM
 RECORDS OF EUREKA COUNTY, NEVADA M. N. REBELETTI, Recorder
 File No. **196383** Fee \$ *219.00*
207 2