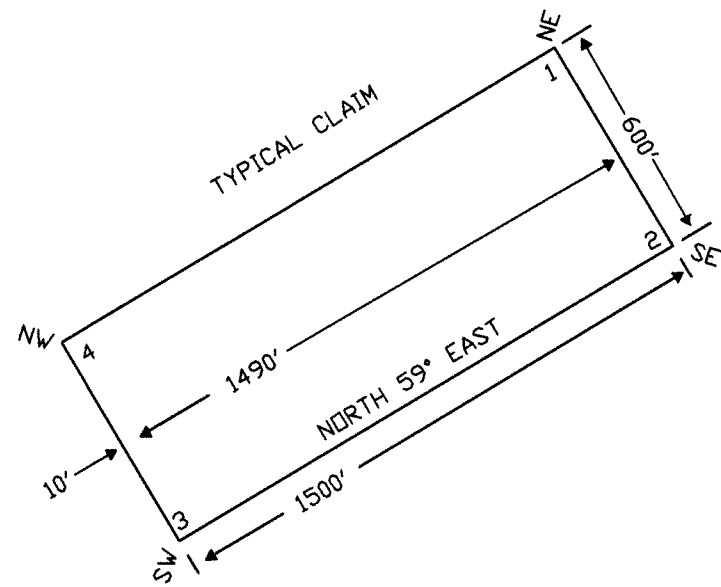
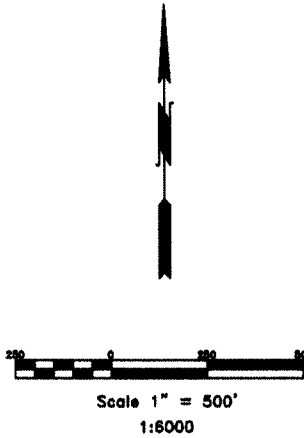


NOTES:  
LOCATION MONUMENTS SET 10' FROM CLAIM END  
CENTERLINES, UNLESS OTHERWISE NOTED ON MAP.  
ALL LOCATION MONUMENTS AND CLAIM POSTS ARE 2"x2"x4'  
WOODEN STAKES.

DASHED SECTION LINES INDICATE PROJECTED SECTIONS.



LOCATION DATES:  
February 3, 2005 - HC 51-72,96-99  
February 4, 2005 - HC 73-95  
  
(49 Total Claims)

TIE POINT DATA:  
THE SOUTHEAST CORNER OF HC 99 LIES APPROXIMATELY  
3,051 FEET NORTH AND 2,189 FEET WEST OF THE SOUTHEAST  
CORNER OF SECTION 31, T.27N., R.50E., M.D.B.M.

TIE POINT DATA:  
THE SOUTHWEST CORNER OF HC 71 LIES APPROXIMATELY  
532 FEET NORTH AND 10,510 FEET WEST OF THE SOUTHEAST  
CORNER OF SECTION 31, T.27N., R.50E., M.D.B.M.

FILED AT THE REQUEST OF *Golden Trend Mining*  
on *March 8* 20 *05*, at *2:27* mins. past *1* P.M.  
RECORDS OF EUREKA COUNTY, NEVADA M. N. REBALEATI, Recorder  
File No. *196473* Fee \$ *739.00*



Locator:  
Golden Trend Resources, Inc.  
1440 - 1166 Alberni St., Vancouver, BC V6E 3Z3  
HC 51-99 Lode Claims  
T.26&27N., R.49&50E.; Eureka County, Nevada

310 SILVER STREET  
PH: (775) 778-0668 ELKO, NV 89801 FAX: (775) 778-0687  
DATE: February 2005  
ACAD FILE NAME: *GoldenTrend\hc2005.dwg*  
PLOT SCALE: 1"=500'  
DRAWN BY: *SM*