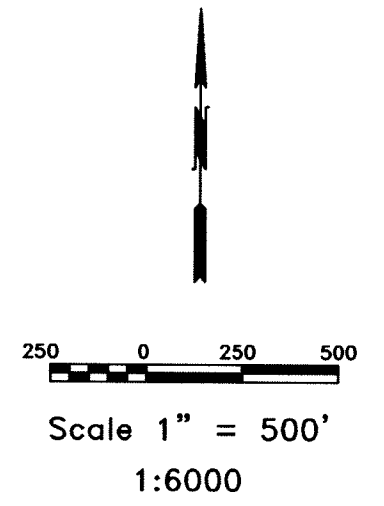


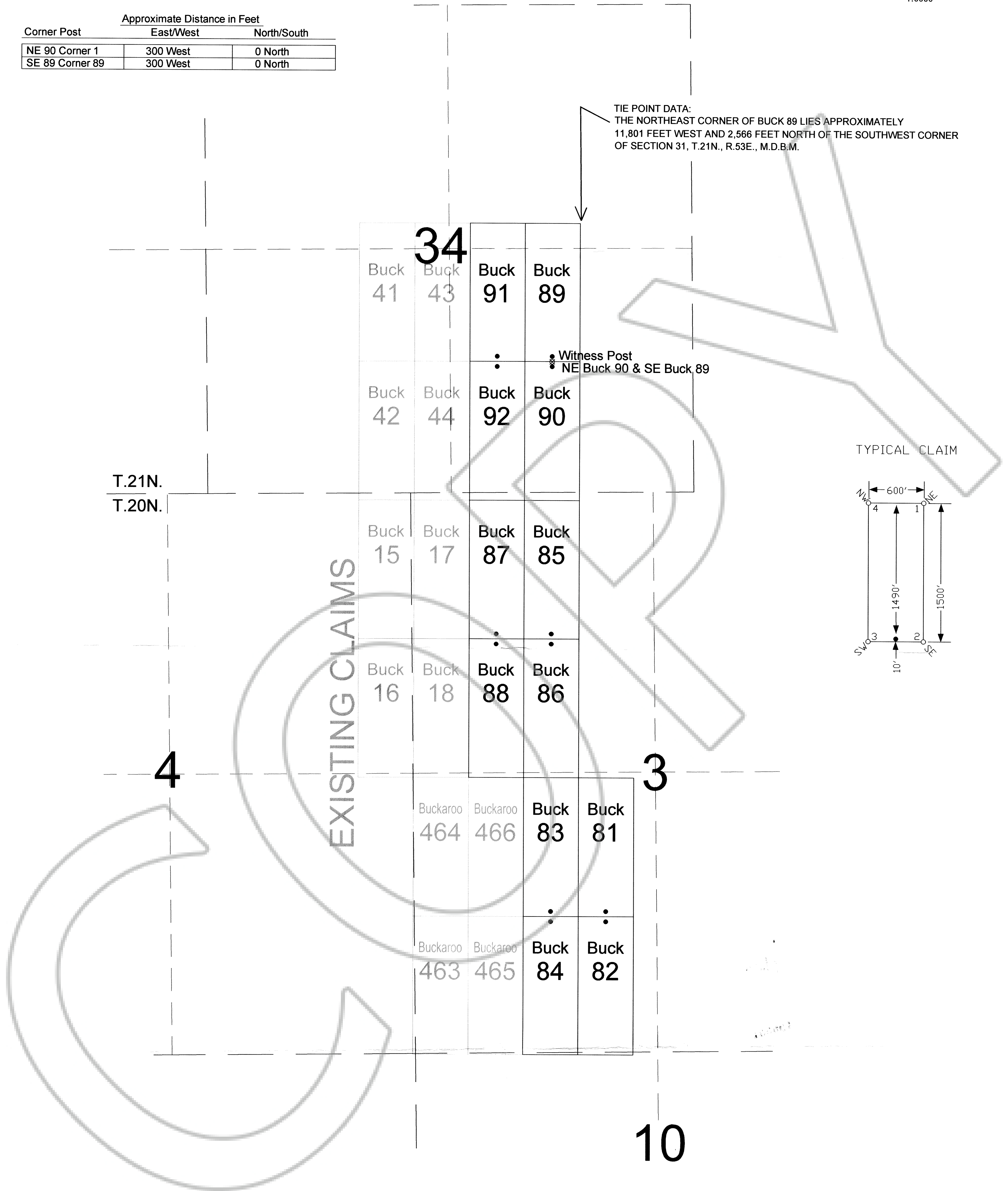
**Buck Lode Claims Witness Post Locations**  
 Witness posts were used due to treacherous terrain. It was impractical and dangerous to life or limb to continue on. Posts are properly marked to designate its right place (NRS 517.030).

Witness posts for the following corners and location monuments are located at the following distances from their true positions:

Corner Post	Approximate Distance in Feet	
	East/West	North/South
NE 90 Corner 1	300 West	0 North
SE 89 Corner 89	300 West	0 North



TIE POINT DATA:  
 THE NORTHEAST CORNER OF BUCK 89 LIES APPROXIMATELY 11,801 FEET WEST AND 2,566 FEET NORTH OF THE SOUTHWEST CORNER OF SECTION 31, T.21N., R.53E., M.D.B.M.



LOCATION DATES:  
 March 4, 2005 - Buck 81-92  
 (12 Total Claims)

NOTES:  
 LOCATION MONUMENTS SET 10' FROM CLAIM END CENTERLINES. ALL LOCATION MONUMENTS AND CLAIM POSTS ARE 2"x2"x4' WOODEN STAKES.  
 DASHED SECTION LINES INDICATE PROJECTED SECTIONS.

FILED AT THE REQUEST OF *Carl Pescio*  
 on *Mar 15* 20 *05* at *10* mins. past *10* M.  
 RECORDS OF EUREKA COUNTY, NEVADA M. N. REBALEATI, Recorder  
 File No. **196551** Fee \$ *184.00*

	Locator:	<b>Carl Pescio</b> PO Box 5831, Elko, Nevada 89802 Buck 81-92 Lode Claims T.20,21N., R.52E.; Eureka County, Nevada	
	DATE:	ACAD FILE NAME:	DRAWN BY:
369 - 5th STREET PH: (775) 778-0668 ELKO, NV 89801 FAX: (775) 778-0887	March 2005	March 2005 Buck 81-92 Lode Claims.dwg 1"=500'	arms