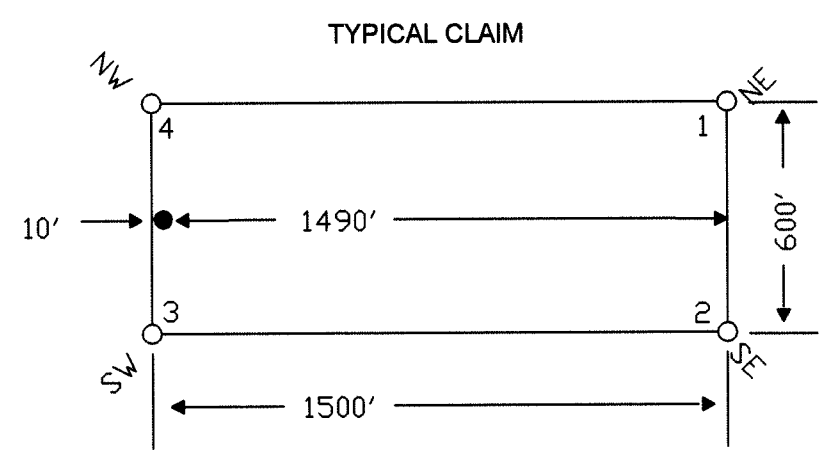
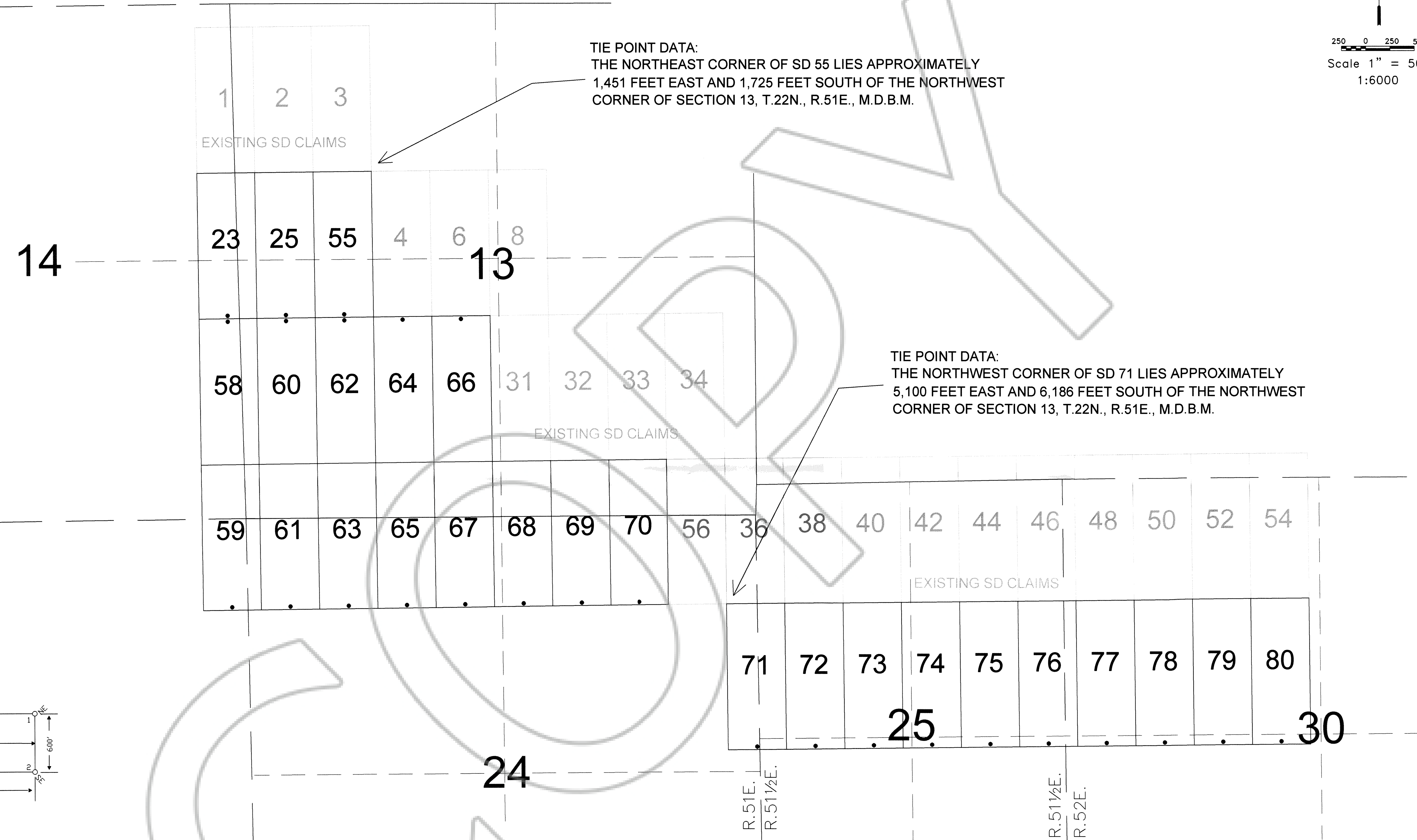


TIE POINT DATA:
THE NORTHEAST CORNER OF SD 55 LIES APPROXIMATELY
1,451 FEET EAST AND 1,725 FEET SOUTH OF THE NORTHWEST
CORNER OF SECTION 13, T.22N., R.51E., M.D.B.M.

TIE POINT DATA:
THE NORTHWEST CORNER OF SD 71 LIES APPROXIMATELY
5,100 FEET EAST AND 6,186 FEET SOUTH OF THE NORTHWEST
CORNER OF SECTION 13, T.22N., R.51E., M.D.B.M.



NOTES:
LOCATION MONUMENTS SET 10' FROM CLAIM END
CENTERLINES. ALL LOCATION MONUMENTS AND CLAIM
POSTS ARE 2"X2"X4' WOODEN STAKES.

DASHED SECTION LINES INDICATE PROJECTED SECTIONS.

LOCATION DATES:
March 6, 2005 - SD 23,25,55,58-70
March 7, 2005 - SD 71-80

(26 Total Claims)

FILED AT THE REQUEST OF *Idaho General Mines*
of *April 21*, 20 *05*, at *4:42* mins. past *10* A.M.
RECORDS OF EUREKA COUNTY, NEVADA M. N. REBALEATI, Recorder
File No. **196752** Fee \$ *394.00*

	Locator: Idaho General Mines, Inc. 10 N. Post St., Suite 610, Spokane, WA 99201 SD Lode Claims T.22N., R.51, 51 1/2, 52E; Eureka County, Nevada	
	DATE: April 2005	ACAD FILE NAME: Carlin Brand SD 2005.dwg PLOT SCALE: 1" = 500'
369 - 5th STREET PH. (775) 778-0668 ELKO, NV 89801 FAX. (775) 778-0687		DRAWN BY: erms