

LMA 188	LMA 189	LMA 236	LMA 237	LMA 248	LMA 249
LMA 190	LMA 191	LMA 238	LMA 239	LMA 250	LMA 251
LMA 192	LMA 193	LMA 240	LMA 241	LMA 252	LMA 253
LMA 194	LMA 195	LMA 242	LMA 243	LMA 254	LMA 255
LMA 196	LMA 197	LMA 244	LMA 245	LMA 256	LMA 257
LMA 198	LMA 199	LMA 246	LMA 247	LMA 258	LMA 259

LMA 159	LMA 161	LMA 163	LMA 165	LMA 167	LMA 169	LMA 171	LMA 173	LMA 175	LMA 177	LMA 179	LMA 181	LMA 183	LMA 185	LMA 187	LMA 189	LMA 191	LMA 193	LMA 195	LMA 197	LMA 199	LMA 201	LMA 203	LMA 205	LMA 207	LMA 209	LMA 211	LMA 213	LMA 215	LMA 217	LMA 219	LMA 221	LMA 223	LMA 225	LMA 227	LMA 229	LMA 231	LMA 233	LMA 235	LMA 237	LMA 239	LMA 241	LMA 243	LMA 245	LMA 247	LMA 249	LMA 251	LMA 253	LMA 255	LMA 257	LMA 259
---------	---------	---------	---------	---------	---------	---------	---------	---------	---------	---------	---------	---------	---------	---------	---------	---------	---------	---------	---------	---------	---------	---------	---------	---------	---------	---------	---------	---------	---------	---------	---------	---------	---------	---------	---------	---------	---------	---------	---------	---------	---------	---------	---------	---------	---------	---------	---------	---------	---------	---------

The NW Corner of LMA 159 bears N68°41'E and is 2958' from the SW Corner of Section 17 T21N R50E.

Sheet 1
Sheet 2

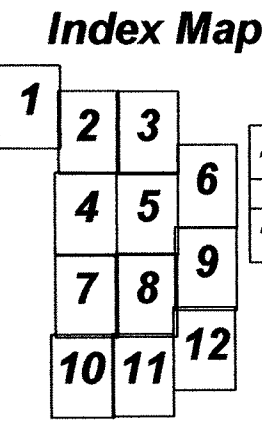
FILED AT THE REQUEST OF *T&T Exploration*
ON 4-29-05 BY 15 3P M
RECORDS OF EUREKA COUNTY, NEVADA
FILE NO. 198049 FILED 19,335.00

"LM" lode claims 191-228 and 237-274 were located on Feb. 4, 2005 and
"LM" lode claims 123-180, 229-236, and 275-330 were located on Feb. 5, 2005 and
"LM" lode claims 331-436 and "LMA" 29, 31-38 were located on Feb. 6, 2005 and
"LM" lode claims 437-506, 679, and "LMA" 67, 69-82 were located on Feb. 7, 2005 and
"LM" lode claims 507-578 and "LMA" 113, 115, 117-136, 185-187 were located on Feb. 8, 2005 and
"LMA" lode claims 159, 161, 163-184 and 188-259 were located on Feb. 9, 2005 and
"LM" lode claims 1-114 and "LMA" 276-311 were located on Feb. 10, 2005 and
"LM" lode claims 579-633 and "LMA" 312-350, 366, 368, 370, 372-374 were located on Feb. 11, 2005 and
"LM" lode claims 634-666, 691-728, 732-788 and LMA 260-275 were located on Feb. 12, 2005 and
"LM" lode claims 115-122, 181-190, 667-678, 729, and "LMA" 375-392 were located on Feb. 13, 2005 and
"LM" lode claims 789-838, 849-890, and 909-942 were located on Feb. 14, 2005 and
"LMA" lode claims 393-406, 419-448, 467-496, 515-536 were located on Feb. 25, 2005 and
"LM" lode claims 730, 731, 839, 840 and "LMA" 407-408, 555-576, 605-608 were located on Feb. 26, 2005 in
Sections 2-5 Township 19 North Range 50 East and
Sections 1-5, 8-17, 20-29, and 32-36 Township 20 North Range 50 East and
Sections 7-9, 16-18, 20-28, and 33-36 Township 21 North Range 50 East and
Sections 3-10, 17-19, and 30 Township 20 North Range 51 East and
Sections 19-23, and 26-34 Township 21 North Range 51 East in
Eureka County, Nevada

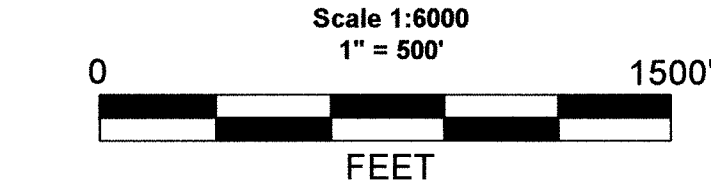
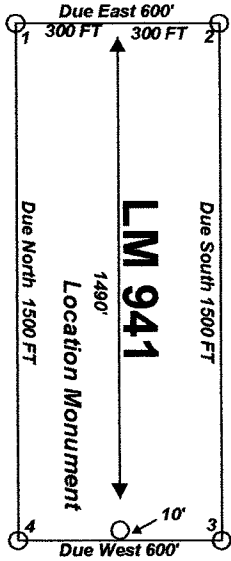
Locator:
T&T Exploration LLC
PO Box 6945
Incline Village, Nv. 89452

Claim Location Map for LM 1-679, 691-840, 849-890, 909-942,
and LMA 29, 31-38, 67, 69-82, 113, 115, 117-136, 159, 161,
163-350, 366, 368, 370, 372-408, 419-448, 467-496, 515-536,
555-576, and 605-608
Sheet 1 of 14

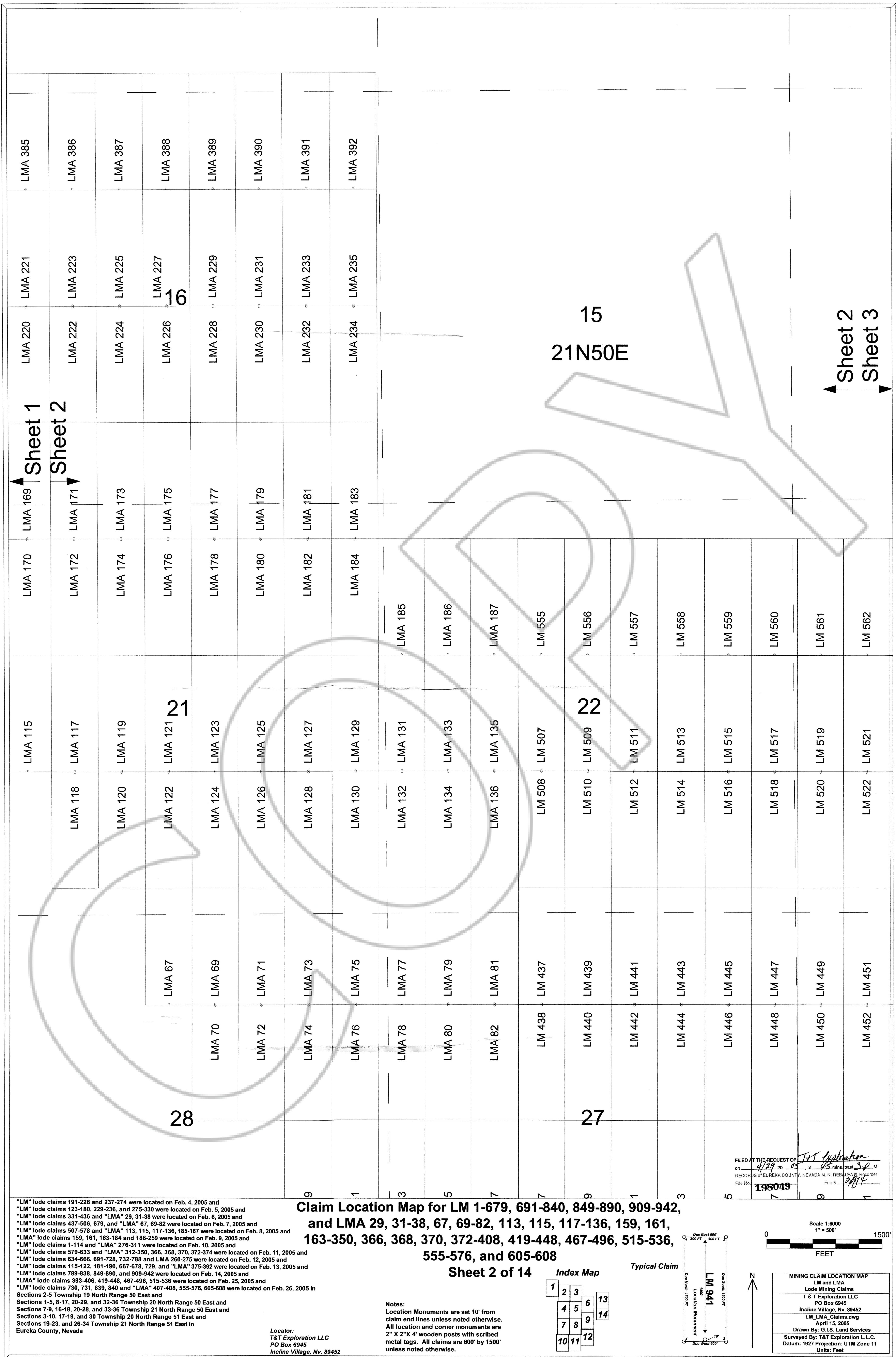
Notes:
Location Monuments are set 10' from
claim end lines unless noted otherwise.
All location and corner monuments are
2" X 2"X 4" wooden posts with scribed
metal tags. All claims are 600' by 1500'
unless noted otherwise.



Typical Claim



MINING CLAIM LOCATION MAP LM and LMA Lode Mining Claims T & T Exploration LLC PO Box 6945 Incline Village, Nv. 89452 LM_LMA_Claims.dwg April 16, 2005 Drawn By: G.I.S. Land Services Surveyed By: T&T Exploration L.L.C. Datum: 1927 Projection: UTM Zone 11 Units: Feet



14

13
21N50E

21N51E
21N50E

23

24

26

25

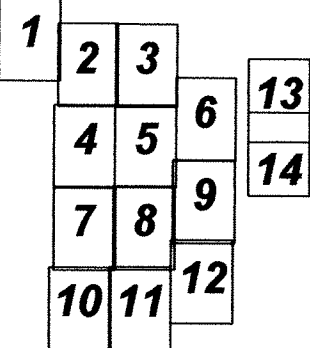
"LM" lode claims 191-228 and 237-274 were located on Feb. 4, 2005 and
"LM" lode claims 123-180, 229-236, and 275-330 were located on Feb. 5, 2005 and
"LM" lode claims 331-436 and "LMA" 29, 31-38 were located on Feb. 6, 2005 and
"LM" lode claims 437-506, 679, and "LMA" 67, 69-82 were located on Feb. 7, 2005 and
"LM" lode claims 507-578 and "LMA" 113, 115, 117-136, 185-187 were located on Feb. 8, 2005 and
"LMA" lode claims 159, 161, 163-184 and 188-259 were located on Feb. 9, 2005 and
"LM" lode claims 1-114 and "LMA" 276-311 were located on Feb. 10, 2005 and
"LM" lode claims 579-633 and "LMA" 312-350, 366, 368, 370, 372-374 were located on Feb. 11, 2005 and
"LM" lode claims 634-666, 691-728, 732-788 and LMA 260-275 were located on Feb. 12, 2005 and
"LM" lode claims 115-122, 181-190, 667-678, 729, and "LMA" 375-392 were located on Feb. 13, 2005 and
"LM" lode claims 789-838, 849-890, and 909-942 were located on Feb. 14, 2005 and
"LMA" lode claims 393-406, 419-448, 467-496, 515-536 were located on Feb. 25, 2005 and
"LM" lode claims 730, 731, 839, 840 and "LMA" 407-408, 555-576, 605-608 were located on Feb. 26, 2005 in
Sections 2-5 Township 19 North Range 50 East and
Sections 1-5, 8-17, 20-28, and 32-36 Township 20 North Range 50 East and
Sections 7-9, 16-18, 20-28, and 33-36 Township 21 North Range 50 East and
Sections 3-10, 17-19, and 30 Township 20 North Range 51 East and
Sections 19-23, and 26-34 Township 21 North Range 51 East in
Eureka County, Nevada

Locator:
T&T Exploration LLC
PO Box 6945
Incline Village, Nv. 89452

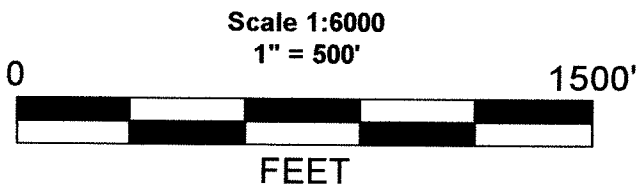
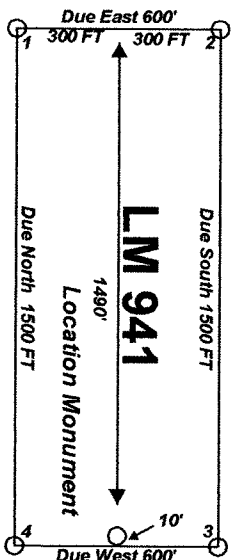
Claim Location Map for LM 1-679, 691-840, 849-890, 909-942,
and LMA 29, 31-38, 67, 69-82, 113, 115, 117-136, 159, 161,
163-350, 366, 368, 370, 372-408, 419-448, 467-496, 515-536,
555-576, and 605-608
Sheet 3 of 14

Notes:
Location Monuments are set 10' from
claim end lines unless noted otherwise.
All location and corner monuments are
2" X 2" X 4' wooden posts with scribed
metal tags. All claims are 600' by 1500'
unless noted otherwise.

Index Map



Typical Claim



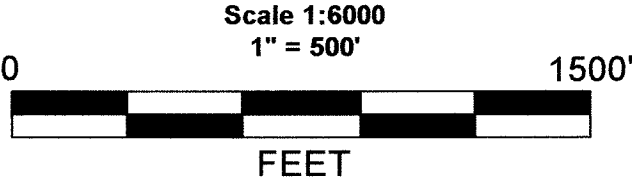
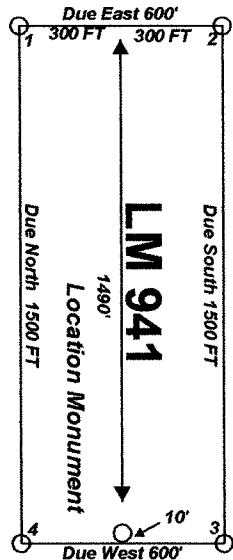
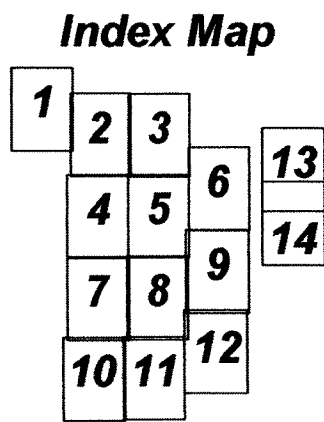
MINING CLAIM LOCATION MAP
LM and LMA
Lode Mining Claims
T & T Exploration LLC
PO Box 6945
Incline Village, Nv. 89452
LM_LMA_Claims.dwg
April 15, 2005
Drawn By: G.I.S. Land Services
Surveyed By: T&T Exploration L.L.C.
Datum: 1927 Projection: UTM Zone 11
Units: Feet

Claim Location Map for LM 1-679, 691-840, 849-890, 909-942,
and LMA 29, 31-38, 67, 69-82, 113, 115, 117-136, 159, 161,
163-350, 366, 368, 370, 372-408, 419-448, 467-496, 515-536,
555-576, and 605-608

Sheet 4 of 14

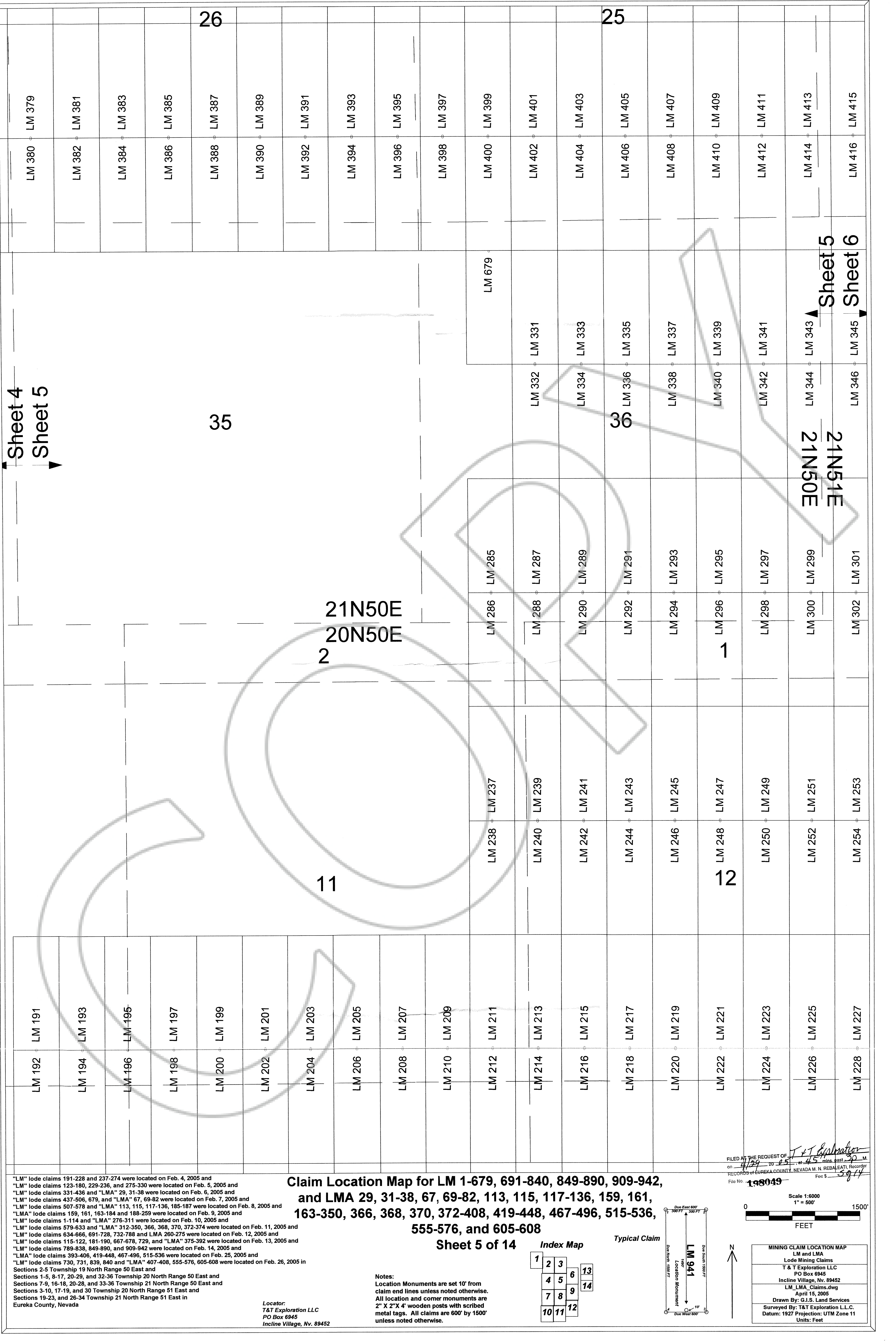
Locator:
T&T Exploration LLC
PO Box 6945
Incline Village, Nv. 89452

Notes:
Location Monuments are set 10' from
claim end lines unless noted otherwise.
All location and corner monuments are
2" X 2"X 4' wooden posts with scribed
metal tags. All claims are 600' by 1500'
unless noted otherwise.



MINING CLAIM LOCATION MAP	
LM and LMA	
Lode Mining Claims	
T & T Exploration LLC	
PO Box 6945	
Incline Village, Nv. 89452	
LM_LMA_Claims.dwg	
Drawn By: G.I.S. Land Services	
Surveyed By: T&T Exploration L.L.C.	
Datum: 1927 Projection: UTM Zone 11	
Units: Feet	

FILED AT THE REQUEST OF *T&T Exploration*
on 4/24 2008, at 45 mins past 30 M.
RECORDS OF EUREKA COUNTY, NEVADA M.N. REBALLET, Recorder
File No. 198049 Fee \$ 27.14



Sheet 4
Sheet 5

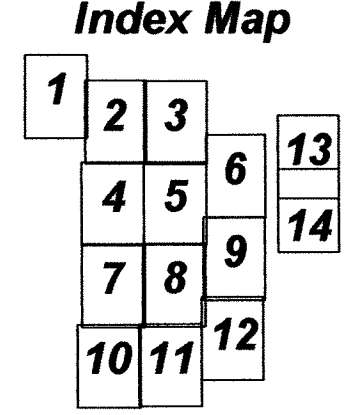
Sheet 5
Sheet 6

"LM" lode claims 191-228 and 237-274 were located on Feb. 4, 2005 and
"LM" lode claims 123-180, 229-236, and 275-330 were located on Feb. 5, 2005 and
"LM" lode claims 331-436 and "LMA" 29, 31-38 were located on Feb. 6, 2005 and
"LM" lode claims 437-506, 679, and "LMA" 67, 69-82 were located on Feb. 7, 2005 and
"LM" lode claims 507-578 and "LMA" 113, 115, 117-136, 185-187 were located on Feb. 8, 2005 and
"LMA" lode claims 159, 161, 163-184 and 188-259 were located on Feb. 9, 2005 and
"LM" lode claims 1-114 and "LMA" 276-311 were located on Feb. 10, 2005 and
"LM" lode claims 579-633 and "LMA" 312-350, 366, 368, 370, 372-374 were located on Feb. 11, 2005 and
"LM" lode claims 634-666, 691-728, 732-788 and LMA 260-275 were located on Feb. 12, 2005 and
"LM" lode claims 115-122, 181-190, 667-678, 729, and "LMA" 375-392 were located on Feb. 13, 2005 and
"LM" lode claims 789-838, 849-890, and 909-942 were located on Feb. 14, 2005 and
"LMA" lode claims 393-406, 419-448, 467-496, 515-536 were located on Feb. 25, 2005 and
"LM" lode claims 730, 731, 839, 840 and "LMA" 407-408, 555-576, 605-608 were located on Feb. 26, 2005 in
Sections 2-5 Township 19 North Range 50 East and
Sections 1-5, 8-17, 20-29, and 32-36 Township 20 North Range 50 East and
Sections 7-9, 16-18, 20-28, and 33-36 Township 21 North Range 50 East and
Sections 3-10, 17-19, and 30 Township 20 North Range 51 East and
Sections 19-23, and 26-34 Township 21 North Range 51 East in
Eureka County, Nevada

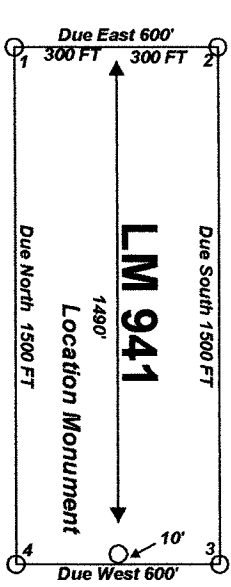
Locator:
T&T Exploration LLC
PO Box 6945
Incline Village, Nv. 89452

Claim Location Map for LM 1-679, 691-840, 849-890, 909-942,
and LMA 29, 31-38, 67, 69-82, 113, 115, 117-136, 159, 161,
163-350, 366, 368, 370, 372-408, 419-448, 467-496, 515-536,
555-576, and 605-608
Sheet 5 of 14

Notes:
Location Monuments are set 10' from
claim end lines unless noted otherwise.
All location and corner monuments are
2" X 2" X 4' wooden posts with scribed
metal tags. All claims are 600' by 1500'
unless noted otherwise.



Typical Claim



01500'
FEET

Scale 1:6000
1" = 500'

FILED AT THE REQUEST OF
on 4/29/25 at 4:55 mins. past 30 M.
RECORDS OF EUREKA COUNTY, NEVADA M. N. REBALEATI, Recorder
File No. 198049 Fee \$ 59.74

T&T Exploration

LM and LMA
Lode Mining Claims
T & T Exploration LLC
PO Box 6945
Incline Village, Nv. 89452
LM_LMA_Claims.dwg
April 15, 2025
Drawn By: G.L.S. Land Services
Surveyed By: T&T Exploration L.L.C.
Datum: 1927 Projection: UTM Zone 11
Units: Feet

"LM" lode claims 191-228 and 237-274 were located on Feb. 4, 2005 and
"LM" lode claims 123-180, 229-236, and 275-330 were located on Feb. 5, 2005 and
"LM" lode claims 331-436 and "LMA" 29, 31-38 were located on Feb. 6, 2005 and
"LM" lode claims 437-506, 679, and "LMA" 67, 69-82 were located on Feb. 7, 2005 and
"LM" lode claims 507-578 and "LMA" 113, 115, 117-136, 185-187 were located on Feb. 8, 2005 and
"LMA" lode claims 159, 161, 163-184 and 188-259 were located on Feb. 9, 2005 and
"LM" lode claims 1-114 and "LMA" 276-311 were located on Feb. 10, 2005 and
"LM" lode claims 579-633 and "LMA" 312-350, 366, 368, 370, 372-374 were located on Feb. 11, 2005 and
"LM" lode claims 634-666, 691-728, 732-788 and LMA 260-275 were located on Feb. 12, 2005 and
"LM" lode claims 115-122, 181-190, 667-678, 729, and "LMA" 375-392 were located on Feb. 13, 2005 and
"LM" lode claims 789-838, 849-890, and 909-942 were located on Feb. 14, 2005 and
"LMA" lode claims 393-406, 419-448, 467-496, 515-536 were located on Feb. 25, 2005 and
"LM" lode claims 730, 731, 839, 840 and "LMA" 407-408, 555-576, 605-608 were located on Feb. 26, 2005 in
Sections 2-5 Township 19 North Range 50 East and
Sections 1-5, 8-17, 20-29, and 32-36 Township 20 North Range 50 East and
Sections 7-9, 16-18, 20-28, and 33-36 Township 21 North Range 50 East and
Sections 3-10, 17-19, and 30 Township 20 North Range 51 East and
Sections 19-23, and 26-34 Township 21 North Range 51 East in
Eureka County, Nevada

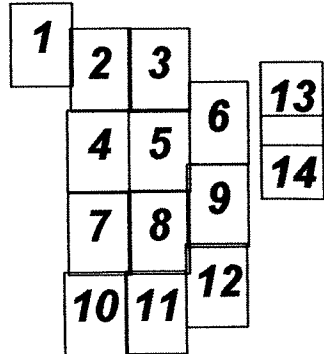
Locator:
T&T Exploration LLC
PO Box 6945
Incline Village, Nv. 89452

Notes:
Location Monuments are set 10' from
claim end lines unless noted otherwise.
All location and corner monuments are
2" X 2"X 4" wooden posts with scribed
metal tags. All claims are 600' by 1500'
unless noted otherwise.

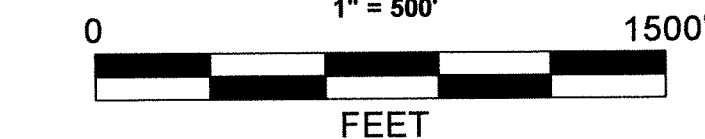
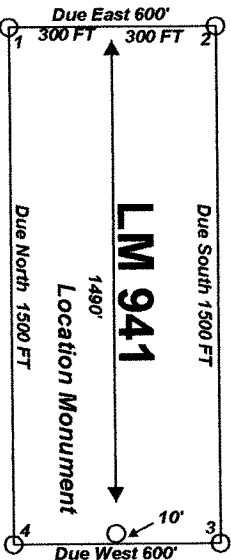
Claim Location Map for LM 1-679, 691-840, 849-890, 909-942,
and LMA 29, 31-38, 67, 69-82, 113, 115, 117-136, 159, 161,
163-350, 366, 368, 370, 372-408, 419-448, 467-496, 515-536,
555-576, and 605-608

Sheet 6 of 14

Index Map



Typical Claim

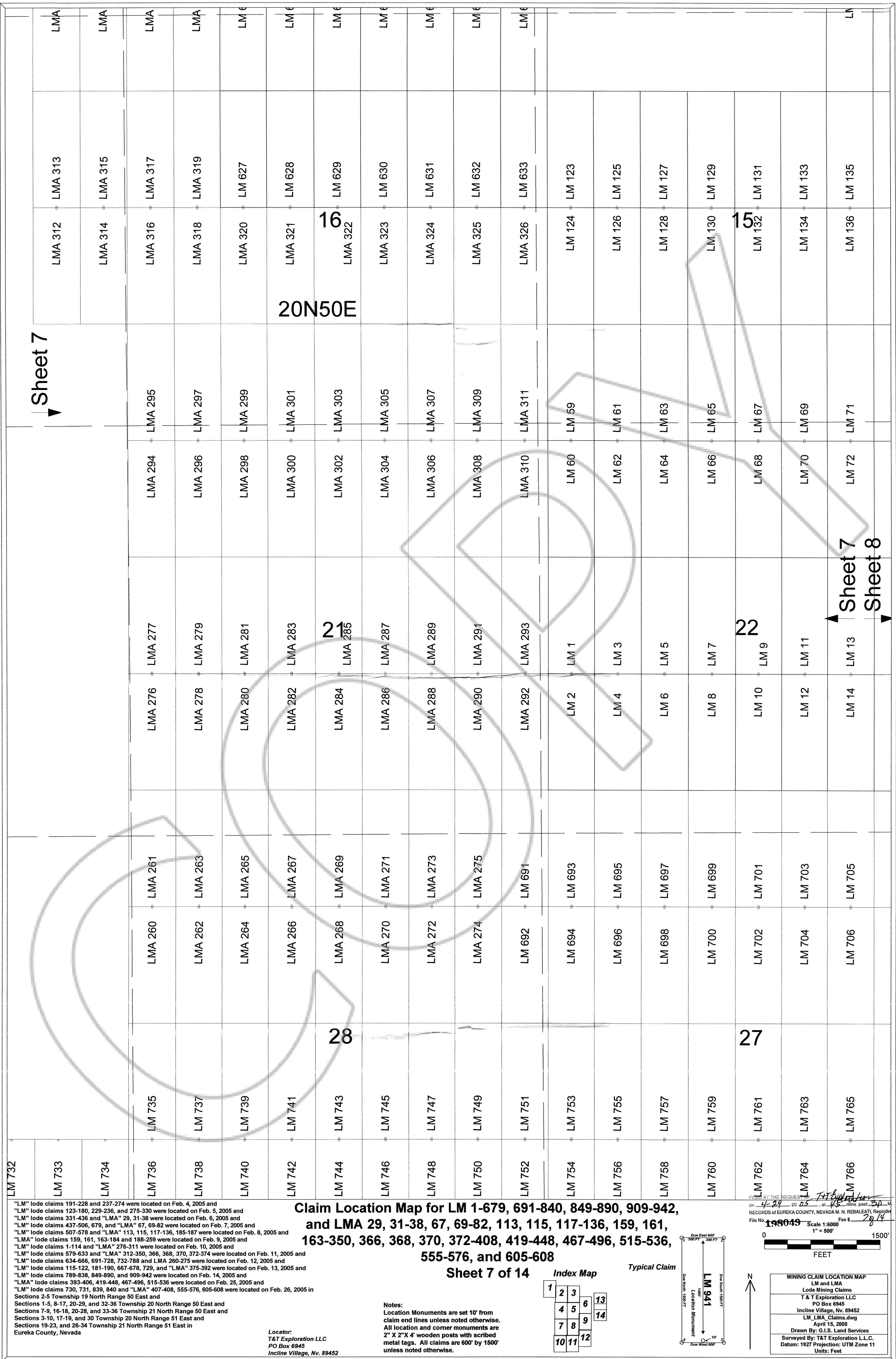


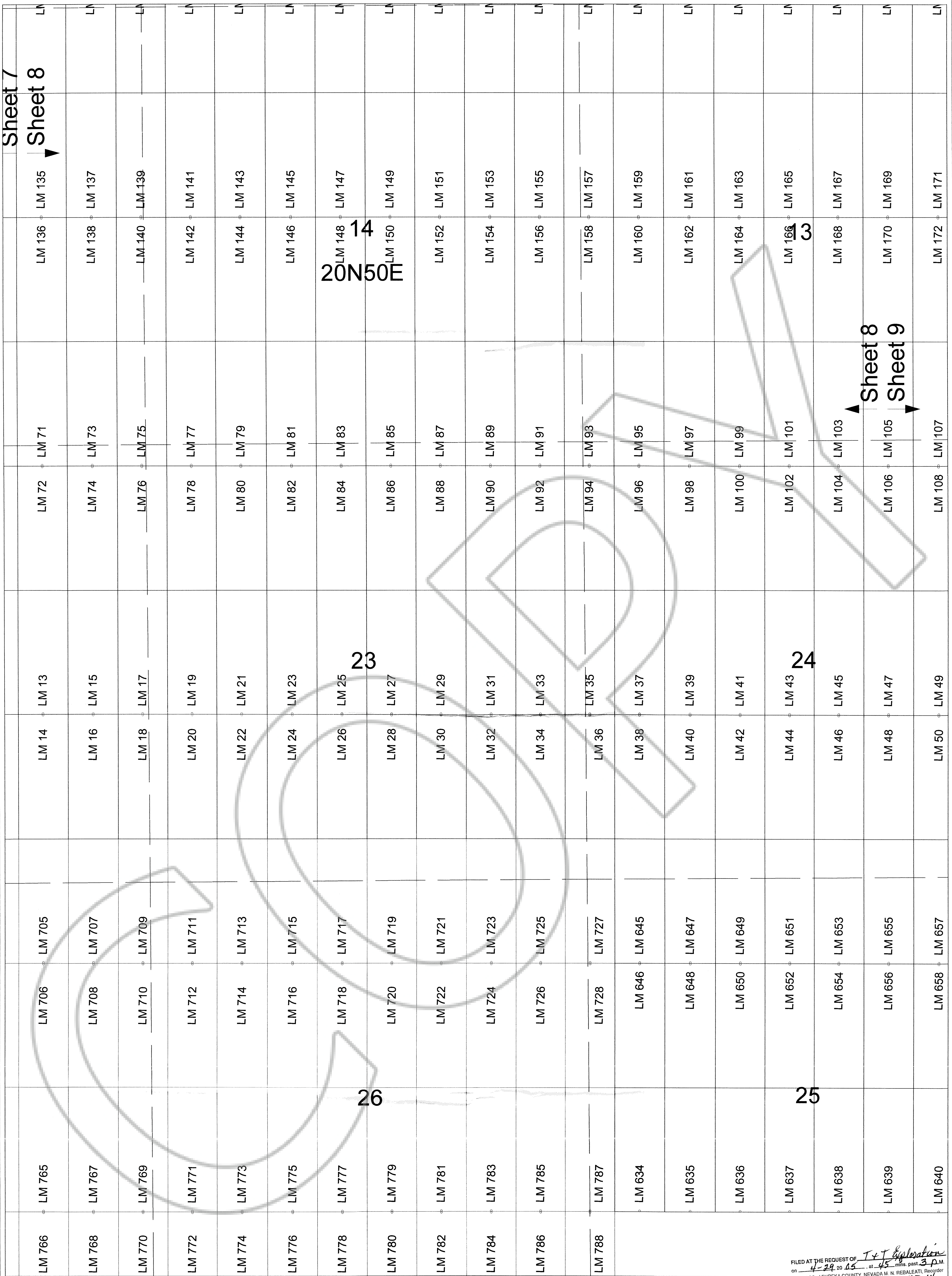
FILED AT THE REQUEST OF *T&T Exploration*
on *4-29* 20 *05* at *4:5* mins. past *3:0* P.M.
RECORDS OF EUREKA COUNTY, NEVADA M. N. REBAEATL Recorder
File No. **198049** Fee \$ *6.87*

Scale 1:6000
1" = 500'

MINING CLAIM LOCATION MAP
LM and LMA
Lode Mining Claims
T & T Exploration LLC
PO Box 6945
Incline Village, Nv. 89452
LM_LMA_Claims.dwg
April 15, 2006
Drawn By: G.I.S. Land Services
Surveyed By: T&T Exploration L.L.C.
Datum: 1927 Projection: UTM Zone 11
Units: Feet

Sheet 6





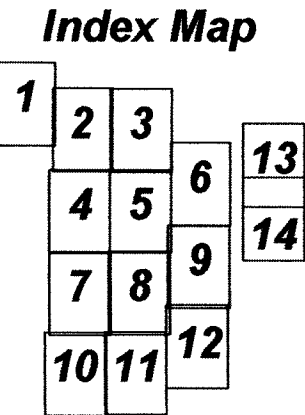
"LM" lode claims 191-228 and 237-274 were located on Feb. 4, 2005 and "LM" lode claims 123-180, 229-236, and 275-330 were located on Feb. 5, 2005 and "LM" lode claims 331-436 and "LMA" 29, 31-38 were located on Feb. 6, 2005 and "LM" lode claims 437-506, 679, and "LMA" 67, 69-82 were located on Feb. 7, 2005 and "LM" lode claims 507-578 and "LMA" 113, 115, 117-136, 185-187 were located on Feb. 8, 2005 and "LMA" lode claims 159, 161, 163-184 and 188-259 were located on Feb. 9, 2005 and "LM" lode claims 1-114 and "LMA" 276-311 were located on Feb. 10, 2005 and "LM" lode claims 579-633 and "LMA" 312-350, 366, 368, 370, 372-374 were located on Feb. 11, 2005 and "LM" lode claims 634-666, 691-728, 732-788 and LMA 260-275 were located on Feb. 12, 2005 and "LM" lode claims 115-122, 181-190, 667-678, 729, and "LMA" 375-392 were located on Feb. 13, 2005 and "LM" lode claims 789-838, 849-890, and 909-942 were located on Feb. 14, 2005 and "LMA" lode claims 393-406, 419-448, 467-496, 515-536 were located on Feb. 25, 2005 and "LM" lode claims 730, 731, 839, 840 and "LMA" 407-408, 555-576, 605-608 were located on Feb. 26, 2005 in Sections 2-5 Township 19 North Range 50 East and Sections 1-5, 8-17, 20-29, and 32-36 Township 20 North Range 50 East and Sections 7-9, 16-18, 20-28, and 33-36 Township 21 North Range 50 East and Sections 3-10, 17-19, and 30 Township 20 North Range 51 East and Sections 19-23, and 26-34 Township 21 North Range 51 East in Eureka County, Nevada

Locator:
T&T Exploration LLC
PO Box 6945
Incline Village, Nv. 89452

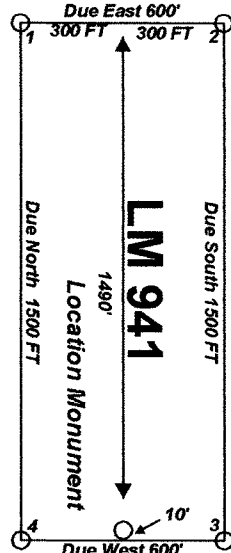
Claim Location Map for LM 1-679, 691-840, 849-890, 909-942,
and LMA 29, 31-38, 67, 69-82, 113, 115, 117-136, 159, 161,
163-350, 366, 368, 370, 372-408, 419-448, 467-496, 515-536,
555-576, and 605-608

Sheet 8 of 14

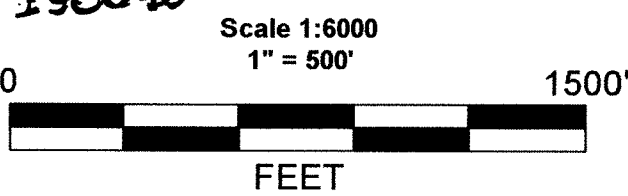
Notes:
Location Monuments are set 10' from claim end lines unless noted otherwise. All location and corner monuments are 2" X 2" X 4' wooden posts with scribed metal tags. All claims are 600' by 1500' unless noted otherwise.



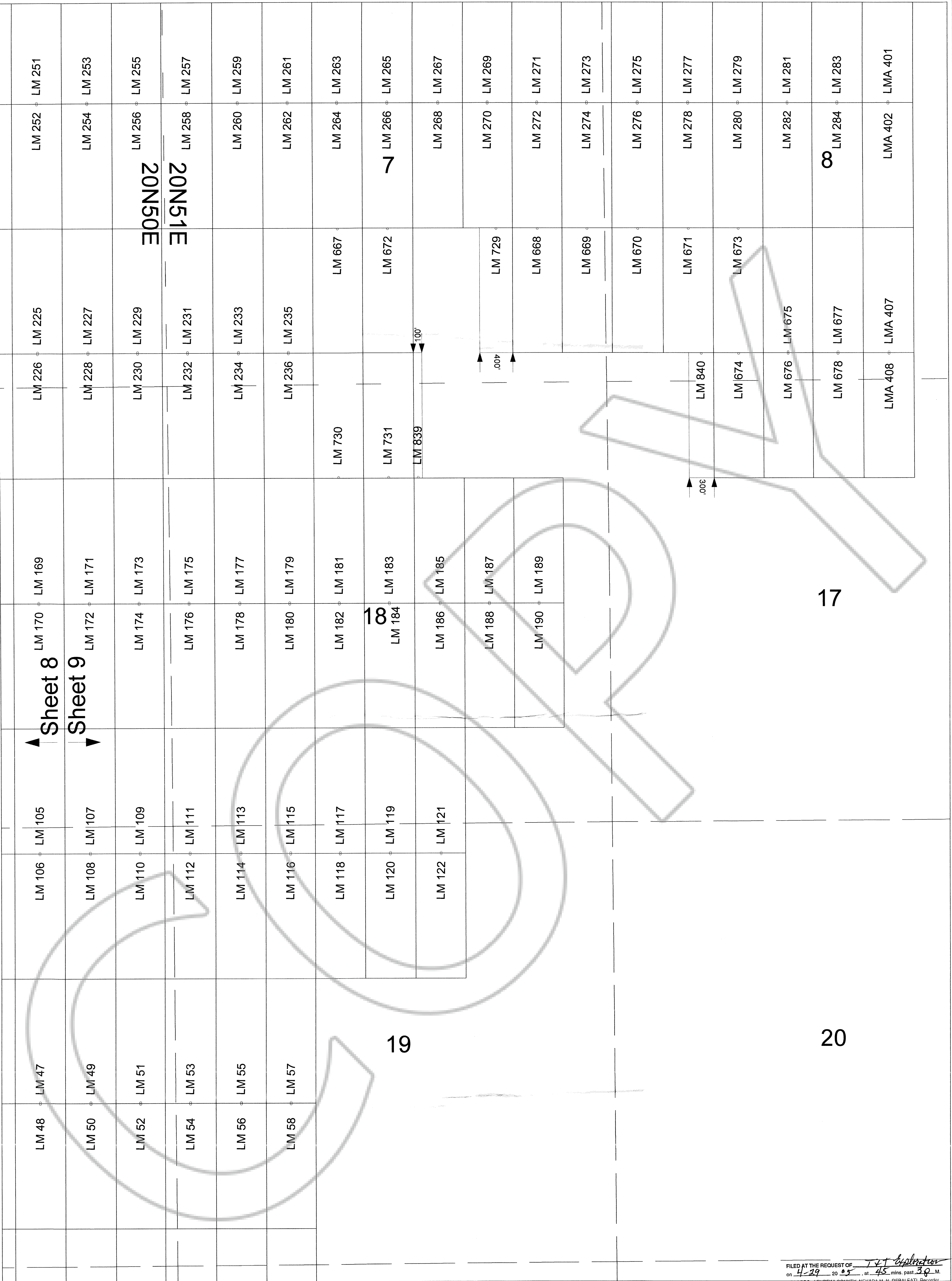
Typical Claim



FILED AT THE REQUEST OF T&T Exploration
on 4-29-05 at 45 mins past 3 P.M.
RECORDS OF EUREKA COUNTY, NEVADA M. N. REBALEATI, Recorder
File No. 198049 Fee \$ 89.14



MINING CLAIM LOCATION MAP LM and LMA Lode Mining Claims T & T Exploration LLC PO Box 6945 Incline Village, Nv. 89452 LM_LMA_Claims.dwg April 15, 2005 Drawn By: G.I.S. Land Services Surveyed By: T&T Exploration L.L.C. Datum: 1927 Projection: UTM Zone 11 Units: Feet

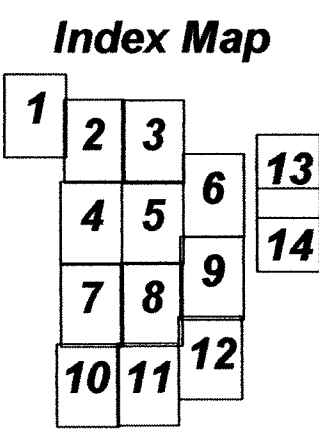


"LM" lode claims 191-228 and 237-274 were located on Feb. 4, 2005 and
"LM" lode claims 123-180, 229-236, and 275-330 were located on Feb. 5, 2005 and
"LM" lode claims 331-436 and "LMA" 29, 31-38 were located on Feb. 6, 2005 and
"LM" lode claims 437-506, 679, and "LMA" 67, 69-82 were located on Feb. 7, 2005 and
"LM" lode claims 507-578 and "LMA" 113, 115, 117-136, 185-187 were located on Feb. 8, 2005 and
"LMA" lode claims 159, 161, 163-184 and 188-259 were located on Feb. 9, 2005 and
"LM" lode claims 1-114 and "LMA" 276-311 were located on Feb. 10, 2005 and
"LM" lode claims 579-633 and "LMA" 312-350, 366, 368, 370, 372-374 were located on Feb. 11, 2005 and
"LM" lode claims 634-666, 691-728, 732-788 and LMA 260-275 were located on Feb. 12, 2005 and
"LM" lode claims 115-122, 181-190, 667-678, 729, and "LMA" 375-392 were located on Feb. 13, 2005 and
"LM" lode claims 789-838, 849-890, and 909-942 were located on Feb. 14, 2005 and
"LMA" lode claims 393-406, 419-448, 467-496, 515-536 were located on Feb. 25, 2005 and
"LM" lode claims 730, 731, 839, 840 and "LMA" 407-408, 555-576, 605-608 were located on Feb. 26, 2005 in
Sections 2-5 Township 19 North Range 50 East and
Sections 1-5, 8-17, 20-29, and 32-36 Township 20 North Range 50 East and
Sections 7-9, 16-18, 20-28, and 33-36 Township 21 North Range 50 East and
Sections 3-10, 17-19, and 30 Township 20 North Range 51 East and
Sections 19-23, and 26-34 Township 21 North Range 51 East in
Eureka County, Nevada

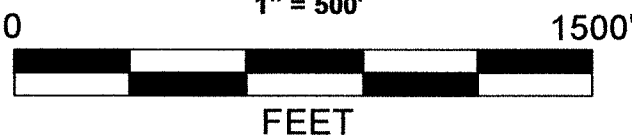
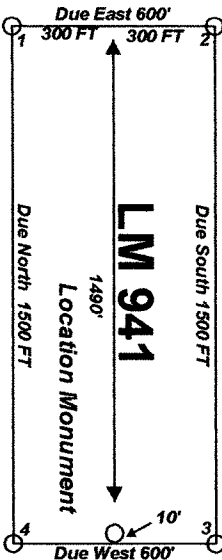
Locator:
T&T Exploration LLC
PO Box 6945
Incline Village, Nv. 89452

**Claim Location Map for LM 1-679, 691-840, 849-890, 909-942,
and LMA 29, 31-38, 67, 69-82, 113, 115, 117-136, 159, 161,
163-350, 366, 368, 370, 372-408, 419-448, 467-496, 515-536,
555-576, and 605-608**
Sheet 9 of 14

Notes:
Location Monuments are set 10' from
claim end lines unless noted otherwise.
All location and corner monuments are
2" X 2" X 4' wooden posts with scribed
metal tags. All claims are 600' by 1500'
unless noted otherwise.



Typical Claim



MINING CLAIM LOCATION MAP LM and LMA Lode Mining Claims T & T Exploration LLC PO Box 6945 Incline Village, Nv. 89452 LM_LMA_Claims.dwg April 15, 2005 Drawn By: G.I.S. Land Services Surveyed By: T&T Exploration L.L.C. Datum: 1927 Projection: UTM Zone 11 Units: Feet

FILED AT THE REQUEST OF T&T Exploration
on 4-29 2005, at 45 mins. past 30 M.
RECORDS OF EUREKA COUNTY, NEVADA - N. REBALEATI, Recorder
File No. _____ Fee \$ 28.14
198049

Sheet 10

Sheet 10

Sheet 11

20N50E
19N50E

4

33

34

3

10

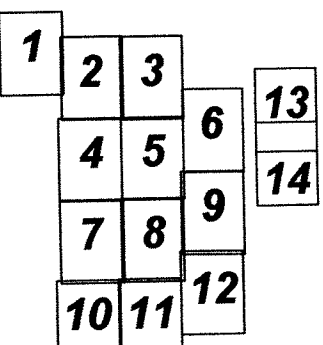
"LM" lode claims 191-228 and 237-274 were located on Feb. 4, 2005 and
"LM" lode claims 123-180, 229-236, and 275-330 were located on Feb. 5, 2005 and
"LM" lode claims 331-436 and "LMA" 29, 31-38 were located on Feb. 6, 2005 and
"LM" lode claims 437-506, 679, and "LMA" 67, 69-82 were located on Feb. 7, 2005 and
"LM" lode claims 507-578 and "LMA" 113, 115, 117-136, 185-187 were located on Feb. 8, 2005 and
"LMA" lode claims 159, 161, 163-184 and 188-259 were located on Feb. 9, 2005 and
"LM" lode claims 1-114 and "LMA" 276-311 were located on Feb. 10, 2005 and
"LM" lode claims 579-633 and "LMA" 312-350, 366, 368, 370, 372-374 were located on Feb. 11, 2005 and
"LM" lode claims 634-666, 691-728, 732-788 and LMA 260-275 were located on Feb. 12, 2005 and
"LM" lode claims 115-122, 181-190, 667-678, 729, and "LMA" 375-392 were located on Feb. 13, 2005 and
"LM" lode claims 789-838, 849-890, and 909-942 were located on Feb. 14, 2005 and
"LMA" lode claims 393-406, 419-448, 467-496, 515-536 were located on Feb. 25, 2005 and
"LM" lode claims 730, 731, 839, 840 and "LMA" 407-408, 555-576, 605-608 were located on Feb. 26, 2005 in
Sections 2-5 Township 19 North Range 50 East and
Sections 1-5, 8-17, 20-29, and 32-36 Township 20 North Range 50 East and
Sections 7-9, 16-18, 20-28, and 33-36 Township 21 North Range 50 East and
Sections 3-10, 17-19, and 30 Township 20 North Range 51 East and
Sections 19-23, and 26-34 Township 21 North Range 51 East in
Eureka County, Nevada

Locator:
T&T Exploration LLC
PO Box 6945
Incline Village, Nv. 89452

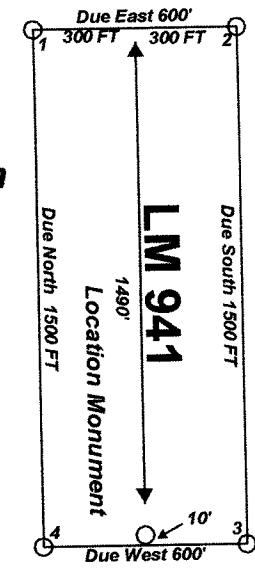
Claim Location Map for LM 1-679, 691-840, 849-890, 909-942,
and LMA 29, 31-38, 67, 69-82, 113, 115, 117-136, 159, 161,
163-350, 366, 368, 370, 372-408, 419-448, 467-496, 515-536,
555-576, and 605-608

Sheet 10 of 14

Index Map



Typical Claim



N

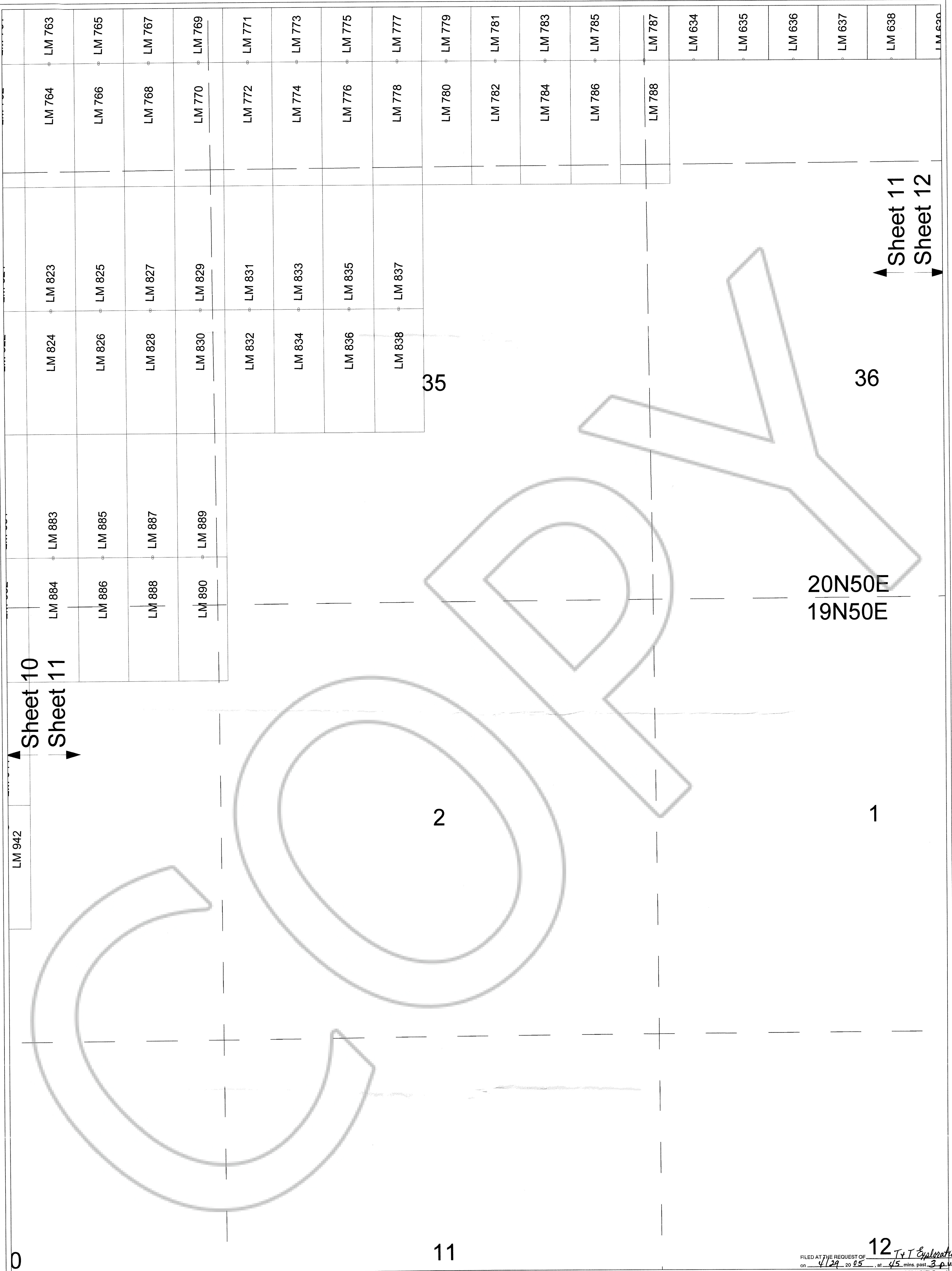
FILED AT THE REQUEST OF T&T Exploration
on 4/17/05 at 4:45 mins. past 3:00 P.M.
RECORDS OF EUREKA COUNTY, NEVADA M. N. REBALEATI, Recorder
File No. 198049 Fee \$ 108.14

Scale 1:6000
1" = 500'

0 300 FT 600 FT 900 FT 1200 FT 1500'

FEET

MINING CLAIM LOCATION MAP	
LM and LMA	Lode Mining Claims
T & T Exploration LLC	PO Box 6945
Incline Village, Nv. 89452	LM_LMA_Claims.dwg
Drawn By: G.I.S. Land Services	April 15, 2005
Surveyed By: T&T Exploration L.L.C.	Datum: 1927 Projection: UTM Zone 11
Units: Feet	

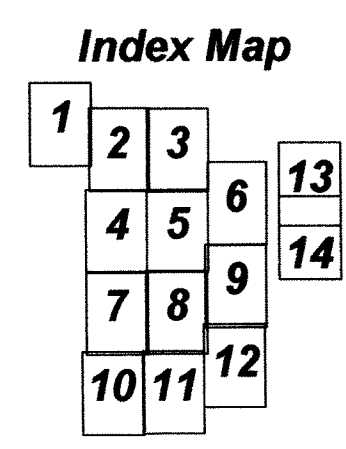


"LM" lode claims 191-228 and 237-274 were located on Feb. 4, 2005 and
"LM" lode claims 123-180, 229-236, and 275-330 were located on Feb. 5, 2005 and
"LM" lode claims 331-436 and "LMA" 29, 31-38 were located on Feb. 6, 2005 and
"LM" lode claims 437-506, 679, and "LMA" 67, 69-82 were located on Feb. 7, 2005 and
"LM" lode claims 507-578 and "LMA" 113, 115, 117-136, 185-187 were located on Feb. 8, 2005 and
"LMA" lode claims 159, 161, 163-184 and 188-259 were located on Feb. 9, 2005 and
"LM" lode claims 1-114 and "LMA" 276-311 were located on Feb. 10, 2005 and
"LM" lode claims 679-633 and "LMA" 312-350, 366, 368, 370, 372-374 were located on Feb. 11, 2005 and
"LM" lode claims 634-666, 691-728, 732-788 and LMA 260-275 were located on Feb. 12, 2005 and
"LM" lode claims 115-122, 181-190, 667-678, 729, and "LMA" 375-392 were located on Feb. 13, 2005 and
"LM" lode claims 789-838, 849-890, and 909-942 were located on Feb. 14, 2005 and
"LMA" lode claims 393-406, 419-448, 467-496, 515-536 were located on Feb. 25, 2005 and
"LM" lode claims 730, 731, 839, 840 and "LMA" 407-408, 555-576, 605-608 were located on Feb. 26, 2005 in
Sections 2-5 Township 19 North Range 50 East and
Sections 1-5, 8-17, 20-29, and 32-36 Township 20 North Range 50 East and
Sections 7-9, 16-18, 20-28, and 33-36 Township 21 North Range 50 East and
Sections 3-10, 17-19, and 30 Township 20 North Range 51 East and
Sections 19-23, and 26-34 Township 21 North Range 51 East in
Eureka County, Nevada

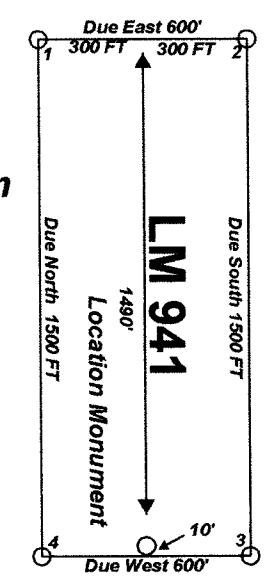
**Claim Location Map for LM 1-679, 691-840, 849-890, 909-942,
and LMA 29, 31-38, 67, 69-82, 113, 115, 117-136, 159, 161,
163-350, 366, 368, 370, 372-408, 419-448, 467-496, 515-536,
555-576, and 605-608**
Sheet 11 of 14

Notes:
Location Monuments are set 10' from
claim end lines unless noted otherwise.
All location and corner monuments are
2" X 2" X 4' wooden posts with scribed
metal tags. All claims are 600' by 1500'
unless noted otherwise.

Locator:
T&T Exploration LLC
PO Box 6945
Incline Village, Nv. 89452



Typical Claim



FILED AT THE REQUEST OF
on 4/29 2005, at 4:5 mins. past 3 o'clock
RECORDS OF EUREKA COUNTY, NEVADA M. N. REBALEATI, Recorder
File No. 198049 Fee \$ 116.74

Scale 1:6000
1" = 500'

0 1500'
FEET

N

MINING CLAIM LOCATION MAP LM and LMA Lode Mining Claims T & T Exploration LLC PO Box 6945 Incline Village, Nv. 89452 LM_LMA_Claims.dwg April 15, 2005 Drawn By: G.I.S. Land Services Surveyed By: T&T Exploration L.L.C. Datum: 1927 Projection: UTM Zone 11 Units: Feet

LM 638	LM 654	LM 653
LM 639	LM 656	LM 655
LM 640	LM 658	LM 657
LM 641	LM 660	LM 659
LM 642	LM 662	LM 661
LM 643	LM 664	LM 663
LM 644	LM 666	LM 665

30

"LM" lode claims 191-228 and 237-274 were located on Feb. 4, 2005 and
 "LM" lode claims 123-180, 229-236, and 275-330 were located on Feb. 5, 2005 and
 "LM" lode claims 331-436 and "LMA" 29, 31-38 were located on Feb. 6, 2005 and
 "LM" lode claims 437-506, 679, and "LMA" 67, 69-82 were located on Feb. 7, 2005 and
 "LM" lode claims 507-578 and "LMA" 113, 115, 117-136, 185-187 were located on Feb. 8, 2005 and
 "LMA" lode claims 159, 161, 163-184 and 188-259 were located on Feb. 9, 2005 and
 "LM" lode claims 1-114 and "LMA" 276-311 were located on Feb. 10, 2005 and
 "LM" lode claims 579-633 and "LMA" 312-350, 366, 368, 370, 372-374 were located on Feb. 11, 2005 and
 "LM" lode claims 634-666, 691-728, 732-788 and LMA 260-275 were located on Feb. 12, 2005 and
 "LM" lode claims 115-122, 181-190, 667-678, 729, and "LMA" 375-392 were located on Feb. 13, 2005 and
 "LM" lode claims 789-838, 849-890, and 909-942 were located on Feb. 14, 2005 and
 "LM" lode claims 393-406, 419-448, 467-496, 515-536 were located on Feb. 25, 2005 and
 "LM" lode claims 730, 731, 839, 840 and "LMA" 407-408, 555-576, 605-608 were located on Feb. 26, 2005 in
 Sections 2-5 Township 19 North Range 50 East and
 Sections 1-5, 8-17, 20-29, and 32-36 Township 20 North Range 50 East and
 Sections 7-9, 16-18, 20-28, and 33-36 Township 21 North Range 50 East and
 Sections 3-10, 17-19, and 30 Township 20 North Range 51 East and
 Sections 19-23, and 26-34 Township 21 North Range 51 East in
 Eureka County, Nevada

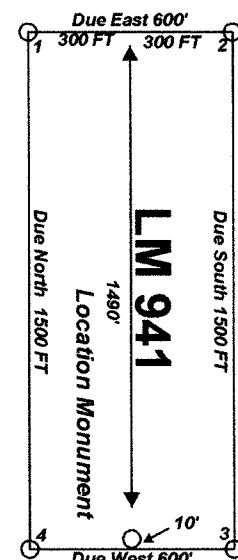
Locator:

**Claim Location Map for LM 1-679, 691-840, 849-890, 909-942,
and LMA 29, 31-38, 67, 69-82, 113, 115, 117-136, 159, 161,
163-350, 366, 368, 370, 372-408, 419-448, 467-496, 515-536,
555-576, and 605-608**

Notes:
Location Monuments are set 10' from claim end lines unless noted otherwise. All location and corner monuments are 2" X 2"X 4' wooden posts with scribed metal tags. All claims are 600' by 1500' unless noted otherwise.

1	2	3	
	4	5	6
	7	8	9
	10	11	12

13
14



FILED AT THE REQUEST OF T & T Exploration
on 4-29 20 05, at 45 mins. past 3 P. M.
RECORDS OF EUREKA COUNTY, NEVADA M. N. REBALEATI, Recorder
File No. 120919 Fee \$ 120919

21

22
21N51E

2

28

27

26

33

34

35

21N51E
20N51E
4

3

Sheet 13
Sheet 14

"LM" lode claims 191-228 and 237-274 were located on Feb. 4, 2005 and
"LM" lode claims 123-180, 229-236, and 275-330 were located on Feb. 5, 2005 and
"LM" lode claims 331-436 and "LMA" 29, 31-38 were located on Feb. 6, 2005 and
"LM" lode claims 437-506, 679, and "LMA" 67, 69-82 were located on Feb. 7, 2005 and
"LM" lode claims 507-578 and "LMA" 113, 115, 117-136, 185-187 were located on Feb. 8, 2005 and
"LMA" lode claims 159, 161, 163-184 and 186-259 were located on Feb. 9, 2005 and
"LM" lode claims 1-114 and "LMA" 276-311 were located on Feb. 10, 2005 and
"LM" lode claims 579-633 and "LMA" 312-350, 366, 368, 370, 372-374 were located on Feb. 11, 2005 and
"LM" lode claims 634-666, 691-726, 732-788 and LMA 260-275 were located on Feb. 12, 2005 and
"LM" lode claims 115-122, 181-190, 667-678, 729, and "LMA" 375-392 were located on Feb. 13, 2005 and
"LM" lode claims 789-838, 849-890, and 909-942 were located on Feb. 14, 2005 and
"LMA" lode claims 393-406, 419-448, 467-496, 515-536 were located on Feb. 25, 2005 and
"LM" lode claims 730, 731, 839, 840 and "LMA" 407-408, 555-576, 605-608 were located on Feb. 26, 2005 in
Sections 2-5 Township 19 North Range 50 East and
Sections 1-5, 8-17, 20-29, and 32-36 Township 20 North Range 50 East and
Sections 7-9, 16-18, 20-28, and 33-36 Township 21 North Range 50 East and
Sections 3-10, 17-19, and 30 Township 20 North Range 51 East and
Sections 19-23, and 26-34 Township 21 North Range 51 East in
Eureka County, Nevada

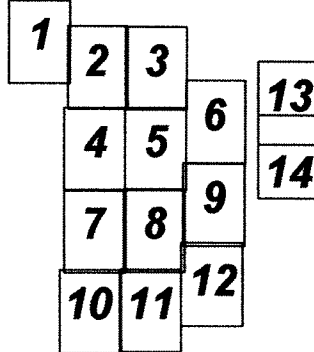
Locator:
T&T Exploration LLC
PO Box 6945
Incline Village, Nv. 89452

Claim Location Map for LM 1-679, 691-840, 849-890, 909-942,
and LMA 29, 31-38, 67, 69-82, 113, 115, 117-136, 159, 161,
163-350, 366, 368, 370, 372-408, 419-448, 467-496, 515-536,
555-576, and 605-608

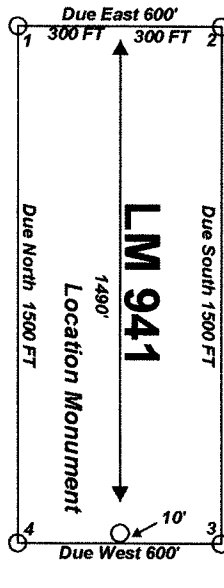
Sheet 13 of 14

Notes:
Location Monuments are set 10' from
claim end lines unless noted otherwise.
All location and corner monuments are
2" X 2" X 4' wooden posts with scribed
metal tags. All claims are 600' by 1500'
unless noted otherwise.

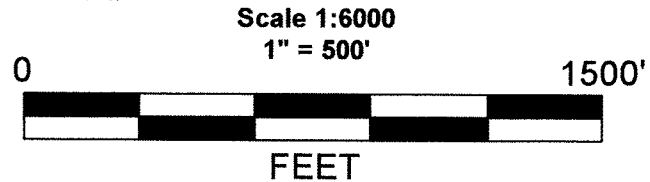
Index Map



Typical Claim



FILED THE REQUEST OF T&T Exploration
on 4/29/05 at 4:25 p.m. past 3 p.m.
RECORDS OF EUREKA COUNTY, NEVADA M. N. REBALEATI, Recorder
File No. 198049 Fee \$ 138.14



MINING CLAIM LOCATION MAP
LM and LMA
Lode Mining Claims
T & T Exploration LLC
PO Box 6945
Incline Village, Nv. 89452
LM_LMA_Claims.dwg
April 15, 2005
Drawn By: G.I.S. Land Services
Surveyed By: T&T Exploration L.L.C.
Datum: 1927 Projection: UTM Zone 11
Units: Feet

33

21N51E
20N51E₄

34

35

The SE Corner of LMA 576 bears
S65°48'W and is 1431' from the NE
Corner of Section 10 T20N R51E.

9

10

**Claim Location Map for LM 1-679, 691-840, 849-890, 909-942,
and LMA 29, 31-38, 67, 69-82, 113, 115, 117-136, 159, 161,
163-350, 366, 368, 370, 372-408, 419-448, 467-496, 515-536,
555-576, and 605-608**

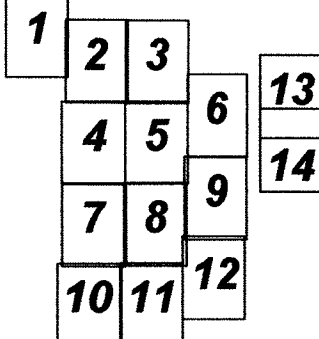
Sheet 14 of 14

"LM" lode claims 191-228 and 237-274 were located on Feb. 4, 2005 and
"LM" lode claims 123-180, 229-236, and 275-330 were located on Feb. 5, 2005 and
"LM" lode claims 331-436 and "LMA" 29, 31-38 were located on Feb. 6, 2005 and
"LM" lode claims 437-506, 679, and "LMA" 67, 69-82 were located on Feb. 7, 2005 and
"LM" lode claims 507-578 and "LMA" 113, 115, 117-136, 185-187 were located on Feb. 8, 2005 and
"LMA" lode claims 159, 161, 163-184 and 188-259 were located on Feb. 9, 2005 and
"LM" lode claims 1-114 and "LMA" 276-311 were located on Feb. 10, 2005 and
"LM" lode claims 579-633 and "LMA" 312-350, 366, 368, 370, 372-374 were located on Feb. 11, 2005 and
"LM" lode claims 634-666, 691-728, 732-788 and LMA 260-275 were located on Feb. 12, 2005 and
"LM" lode claims 115-122, 181-190, 667-678, 729, and "LMA" 375-392 were located on Feb. 13, 2005 and
"LM" lode claims 789-838, 849-890, and 909-942 were located on Feb. 14, 2005 and
"LMA" lode claims 393-408, 419-448, 467-496, 515-536 were located on Feb. 25, 2005 and
"LM" lode claims 730, 731, 839, 840 and "LMA" 407-408, 555-576, 605-608 were located on Feb. 26, 2005 in
Sections 2-5 Township 19 North Range 50 East and
Sections 1-5, 8-17, 20-29, and 32-36 Township 20 North Range 50 East and
Sections 7-9, 16-18, 20-28, and 33-36 Township 21 North Range 50 East and
Sections 3-10, 17-19, and 30 Township 20 North Range 51 East and
Sections 19-23, and 26-34 Township 21 North Range 51 East in
Eureka County, Nevada

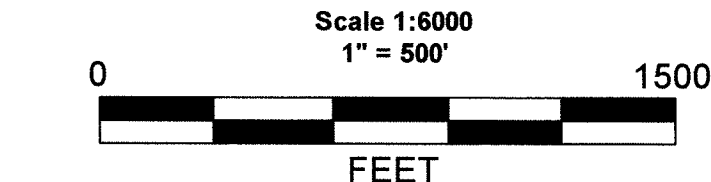
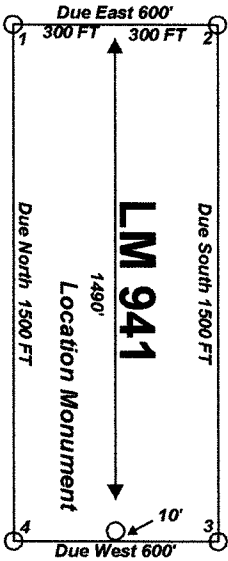
Locator:
T&T Exploration LLC
PO Box 6945
Incline Village, Nv. 89452

Notes:
Location Monuments are set 10' from
claim end lines unless noted otherwise.
All location and corner monuments are
2" X 2" X 4" wooden posts with scribed
metal tags. All claims are 600' by 1500'
unless noted otherwise.

Index Map



Typical Claim



MINING CLAIM LOCATION MAP
LM and LMA
Lode Mining Claims
T & T Exploration LLC
PO Box 6945
Incline Village, Nv. 89452
LM_LMA_Claims.dwg
Drawn By: G.I.S. Land Services
Surveyed By: T&T Exploration L.L.C.
Datum: 1927 Projection: UTM Zone 11
Units: Feet