

**RM 19-50 lode claims staked February 26th 2005
by Richard Bedell
GeoCorp 480 East 8th Street Reno NV 89512.**

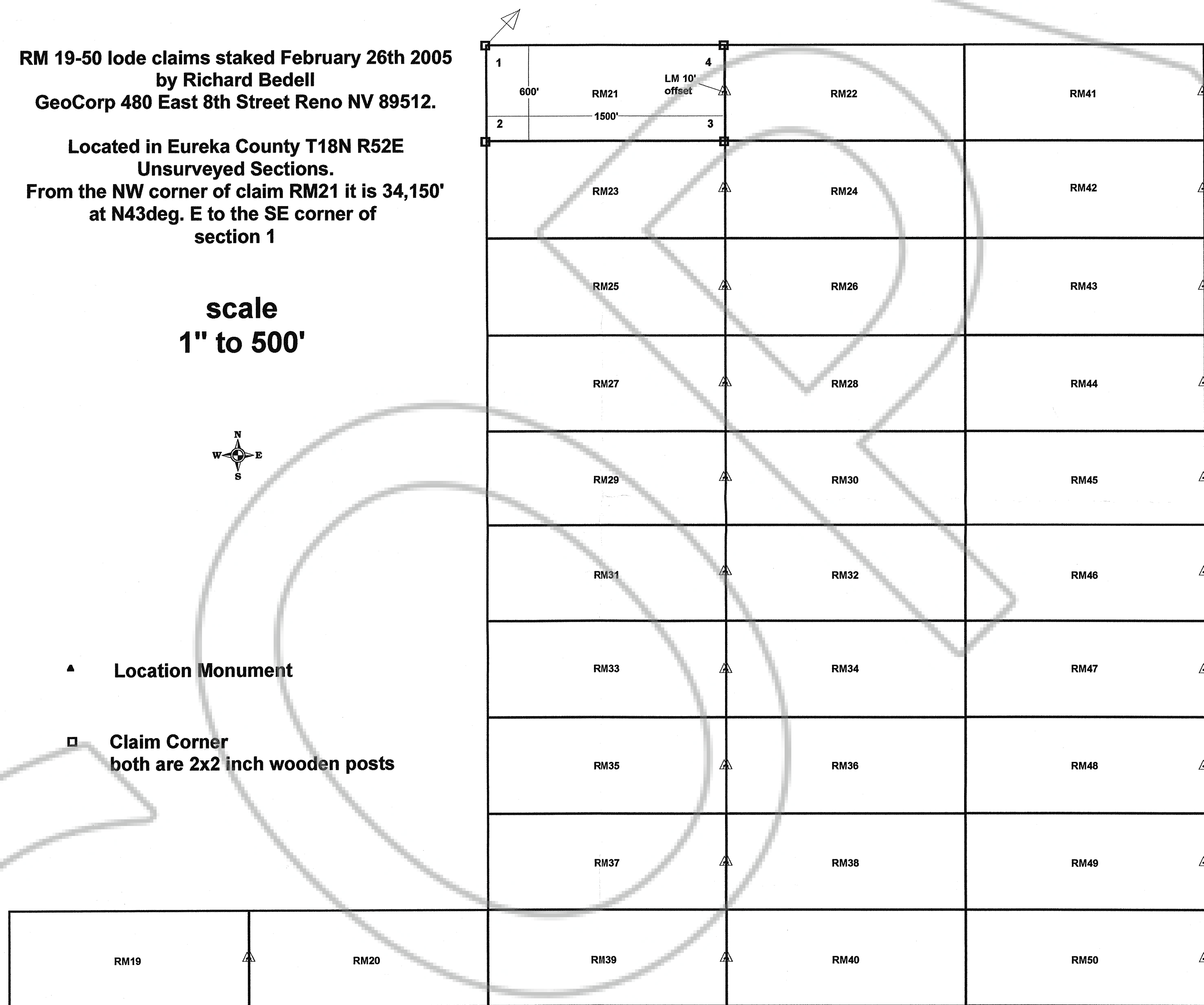
**Located in Eureka County T18N R52E
Unsurveyed Sections.
From the NW corner of claim RM21 it is 34,150'
at N43deg. E to the SE corner of
section 1**

scale
1" to 500'



▲ Location Monument

- **Claim Corner**
both are 2x2 inch wooden posts



FILED AT THE REQUEST OF Geo Corp
on May 6 20 05, at 11 mins. past 39 M.
RECORDED IN CLATSOP COUNTY, NEVADA M. N. REBALEATI, Recorder
198178
File No. _____ Fee \$ 529.00