

SECTION  
36

SECTION  
6

SECTION  
5

SECTION  
1

SECTION  
6

SECTION  
5

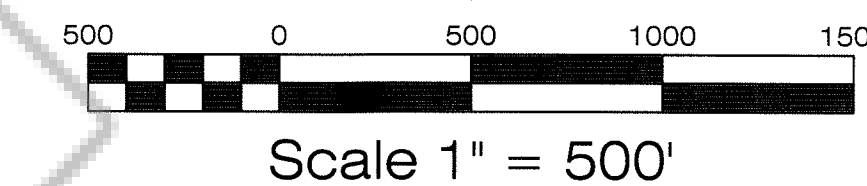
R 48 E  
R 49 E

T 24 N  
T 23 N  
T 23 1/2 N  
T 23 N

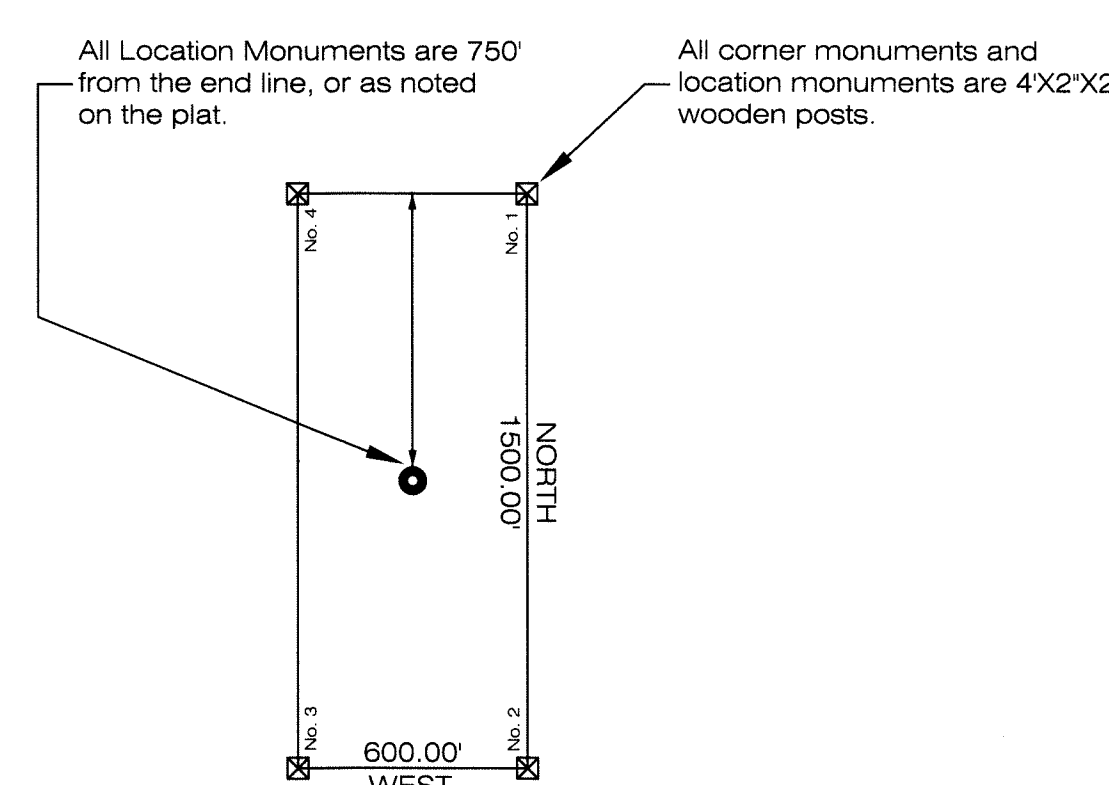
Found GLO Brass Cap for  
Closing Corner Common to  
Section 6, T23N, R49E and  
Section 6, T23 1/2N, R49E

N 23° 09' 52" E  
1438.78 FT

800 801 802 803 804 805 806 807 808 809



Typical Claim  
unless otherwise noted



FILED AT THE REQUEST OF *Placer Dome Expl*  
on *June 2, 2005*, at *47* mins. past *10* P.M.  
RECORDS OF EUREKA COUNTY, NEVADA M. N. REBALEATI, Recorder  
File No. **198818** Fee \$ *134.00*

Claims in T23 1/2 N, R49E, MDM, Sections 5, 6;  
Claims in T23N, R49E, MDM, Sections 5, 6.  
Claims Located on March 5, 2005.

Map Of:  
KYS Lode Claims # 800 - 809  
Eureka County, Nevada

Located For:  
Placer Dome Exploration, Inc.  
240 S. Rock Blvd. Suite 117  
Reno, Nevada 89502