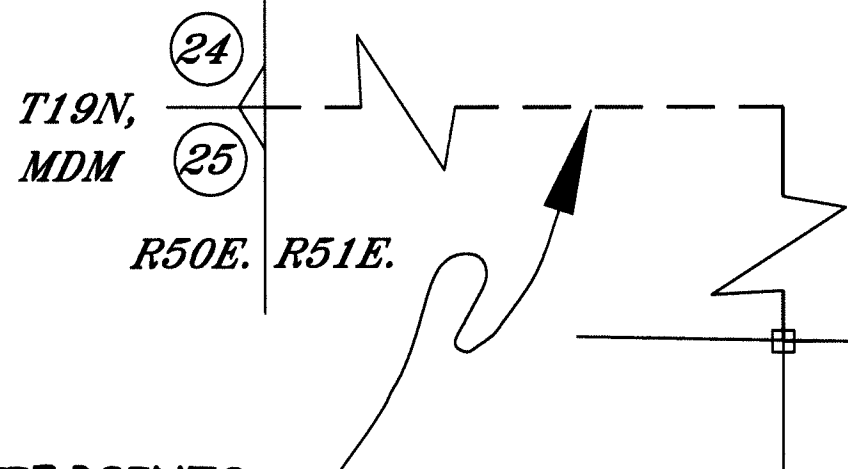
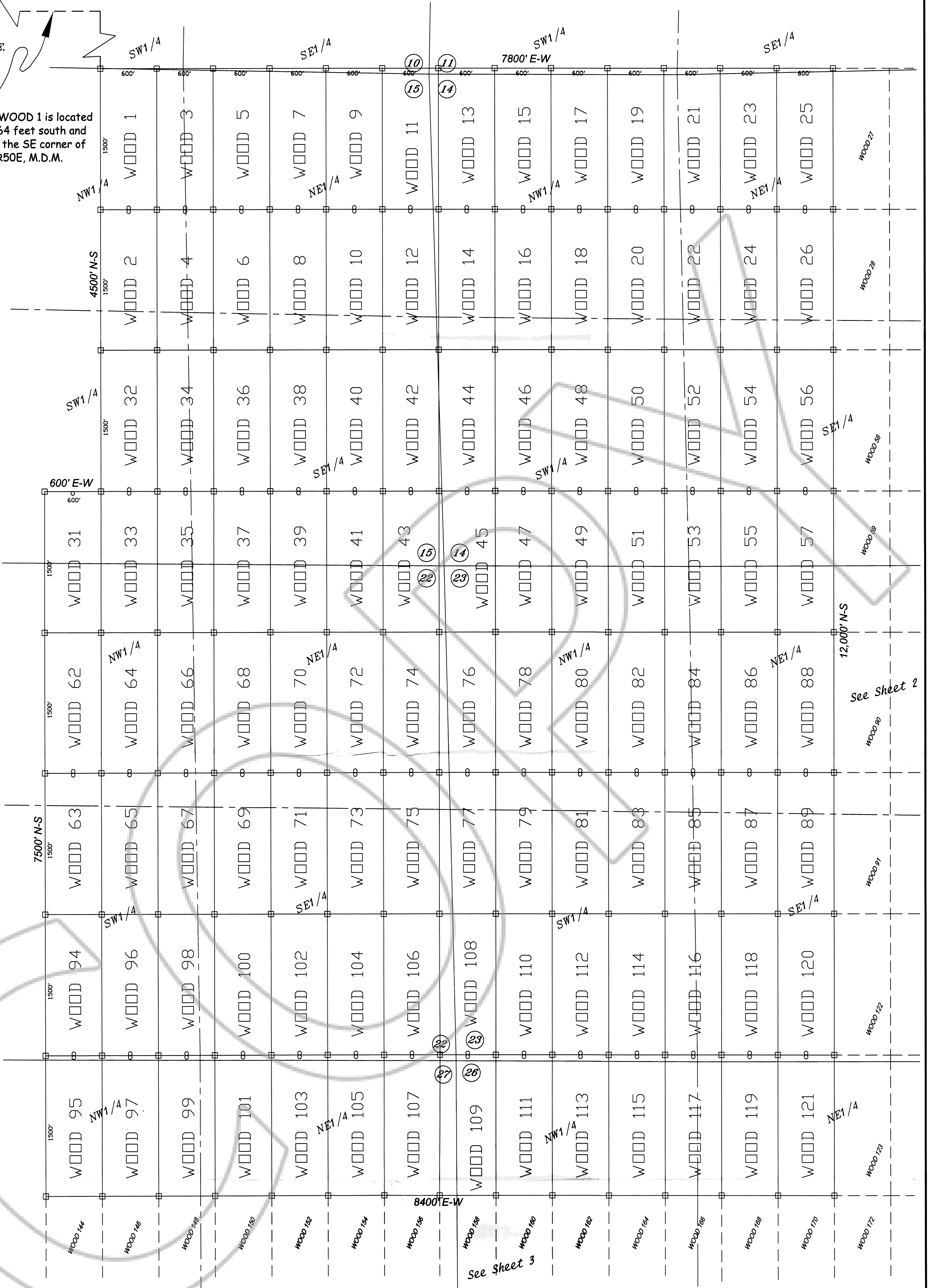


R51E



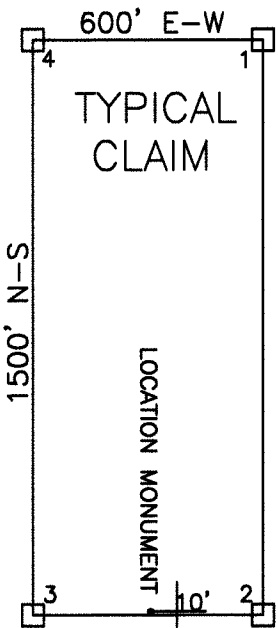
TIE POINTS:
 The NW corner of WOOD 1 is located approximately 21,864 feet south and 17,176 feet east of the SE corner of Section 24, T19N, R50E, M.D.M.

T18N



Scale: 1 in. = 500 ft.
 U.S. Survey Foot

Sections are projected using Nevada GCDB Nevada State Plane 1927, Nevada East Zone.



ALL CLAIMS ARE 1500' x 600' UNLESS OTHERWISE NOTED.
 ALL MONUMENTS ARE 2" x 2" x 4" WOODEN POSTS.
 LOCATION MONUMENTS ARE SET 10' INSIDE CLAIM BOUNDARY UNLESS OTHERWISE NOTED.

OWNER
 NEWMONT USA LIMITED, d/b/a
 NEWMONT MINING CORPORATION
 555 FIFTH STREET
 ELKO, NEVADA 89801

LEGEND
 ○ = 2" x 2" x 4" WOOD POST LOCATION MONUMENT
 □ = 2" x 2" x 4" WOOD POST CLAIM CORNER
 ◁ = FOUND SURVEY MONUMENT

TIE POINT
 The NW corner of WOOD 144 is located approximately 33,864 feet south and 17,176 feet east of the southeast corner of section 24, T19N, R50E, M.D.M.

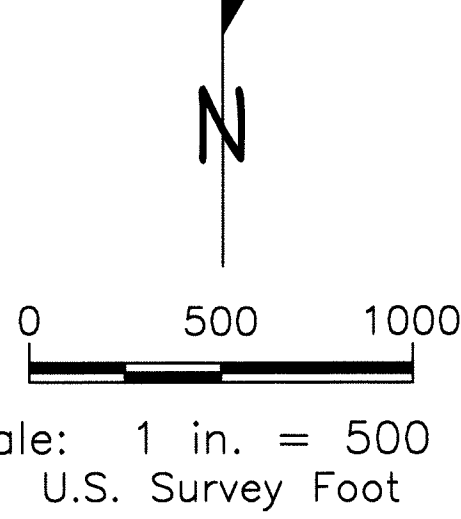
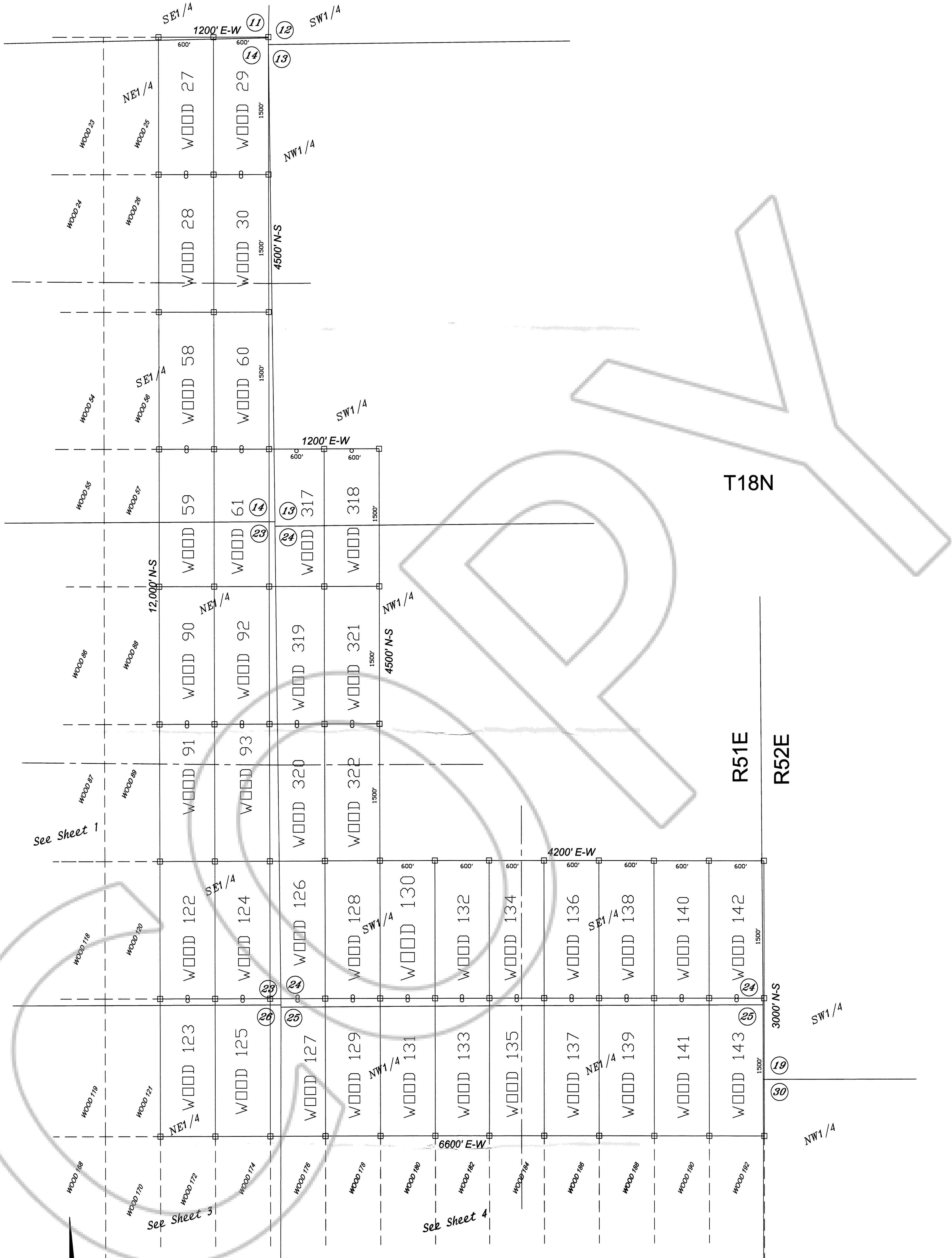
The NW corner of WOOD 1 is located approximately 21,864 feet south and 17,176 feet east of the southeast corner of section 24, T19N, R50E, M.D.M.

See Sheet 3

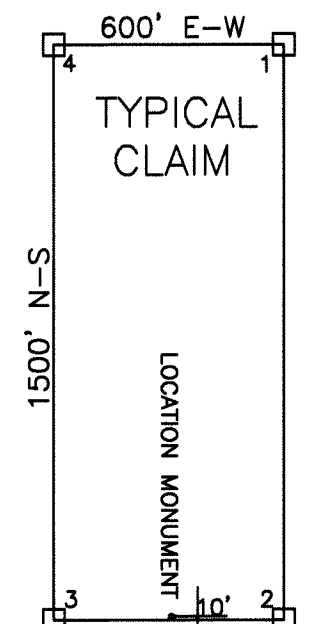
See Sheet 2

FILED AT THE REQUEST OF *Newmont Mining Corp*
 on *June 7, 2005* at *48* mins past *10 A.M.*
 RECORDS OF EUREKA COUNTY, NEVADA M. N. REBALEATI, Recorder
 File No. *199339* Fee \$ *4834.00*

Claim Map of
WOOD 1-322
 Lode Claims located within
 SECTION 10-15, 22-27 and 34-36, T18N, R51E, M.D.M.
 SECTIONS 19, 30 and 31, T18N, R52E, M.D.M.
 SECTION 1, T17N, R51E, M.D.M.
 SECTION 6, T17N, R52E, M.D.M.
 EUREKA COUNTY, NEVADA



Sections are projected using Nevada GCDB Nevada State Plane 1927, Nevada East Zone.



ALL CLAIMS ARE 1500' x 600' UNLESS OTHERWISE NOTED.
ALL MONUMENTS ARE 2" x 2" x 4" WOODEN POSTS.
LOCATION MONUMENTS ARE SET 10' INSIDE CLAIM BOUNDARY UNLESS OTHERWISE NOTED

OWNER
NEWMONT USA LIMITED, d/b/a
NEWMONT MINING CORPORATION
555 FIFTH STREET
ELKO, NEVADA 89801

LEGEND
○ = 2" x 2" x 4' WOOD POST LOCATION MONUMENT
□ = 2" x 2" x 4' WOOD POST CLAIM CORNER
◁ = FOUND SURVEY MONUMENT

TIE POINT
The NW corner of WOOD 144 is located approximately 33,864 feet south and 17,176 feet east of the southeast corner of section 24, T19N, R50E, M.D.M.

The NW corner of WOOD 1 is located approximately 21,864 feet south and 17,176 feet east of the southeast corner of section 24, T19N, R50E, M.D.M.

FILED AT THE REQUEST OF *Newmont Mining Corp*
on *June 7*, 20 *05*, at *48* mins past *10am*
RECORDS OF EUREKA COUNTY, NEVADA M. N. REBALEATI, Recorder
File No. **199339** Fee \$ *284*

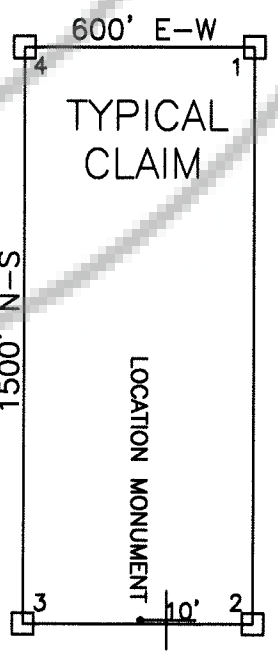
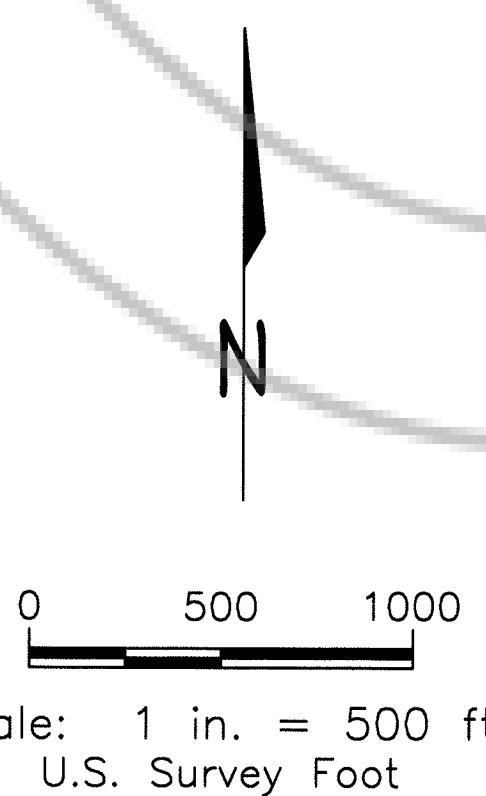
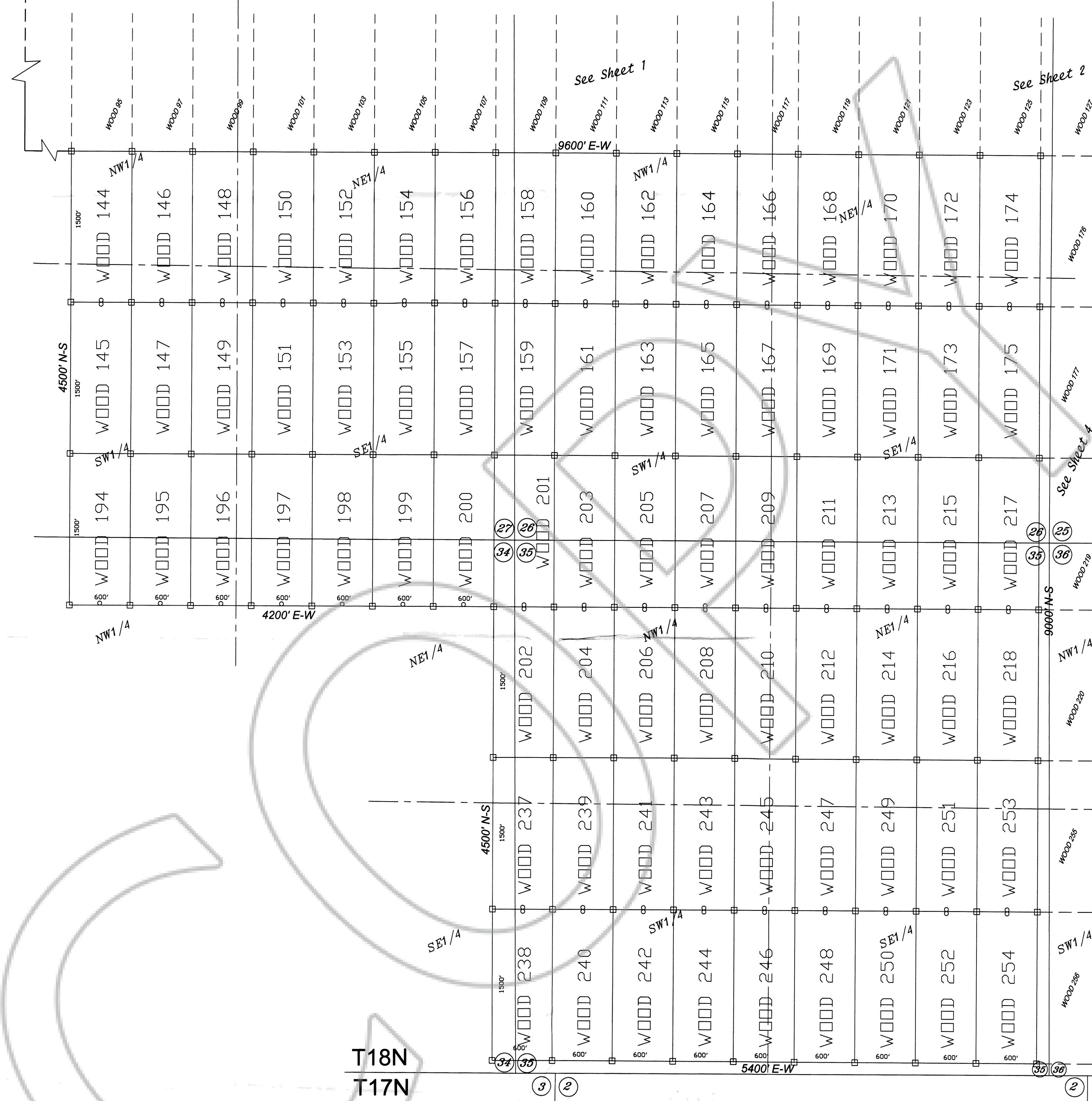
Claim Map of
WOOD 1-322
Lode Claims located within
SECTION 10-15, 22-27 and 34-36, T18N, R51E, M.D.M.
SECTIONS 19, 30 and 31, T18N, R52E, M.D.M.
SECTION 1, T17N, R51E, M.D.M.
SECTION 6, T17N, R52E, M.D.M.
EUREKA COUNTY, NEVADA

NEWMONT MINING CORPORATION

T19N,

24
25
R50E, R51E,
MDM MDM

TIE POINTS:
The NW corner of WOOD 144 is located approximately 33,864 feet south and 17,176 feet east of the SE corner of Section 24, T19N, R50E, M.D.M.



ALL CLAIMS ARE 1500' x 600' UNLESS OTHERWISE NOTED.
ALL MONUMENTS ARE 2" x 2" x 4" WOODEN POSTS.
LOCATION MONUMENTS ARE SET 10' INSIDE CLAIM BOUNDARY UNLESS OTHERWISE NOTED.

Sections are projected using Nevada GCDB Nevada State Plane 1927, Nevada East Zone.

OWNER
NEWMONT USA LIMITED, d/b/a
NEWMONT MINING CORPORATION
555 FIFTH STREET
ELKO, NEVADA 89801

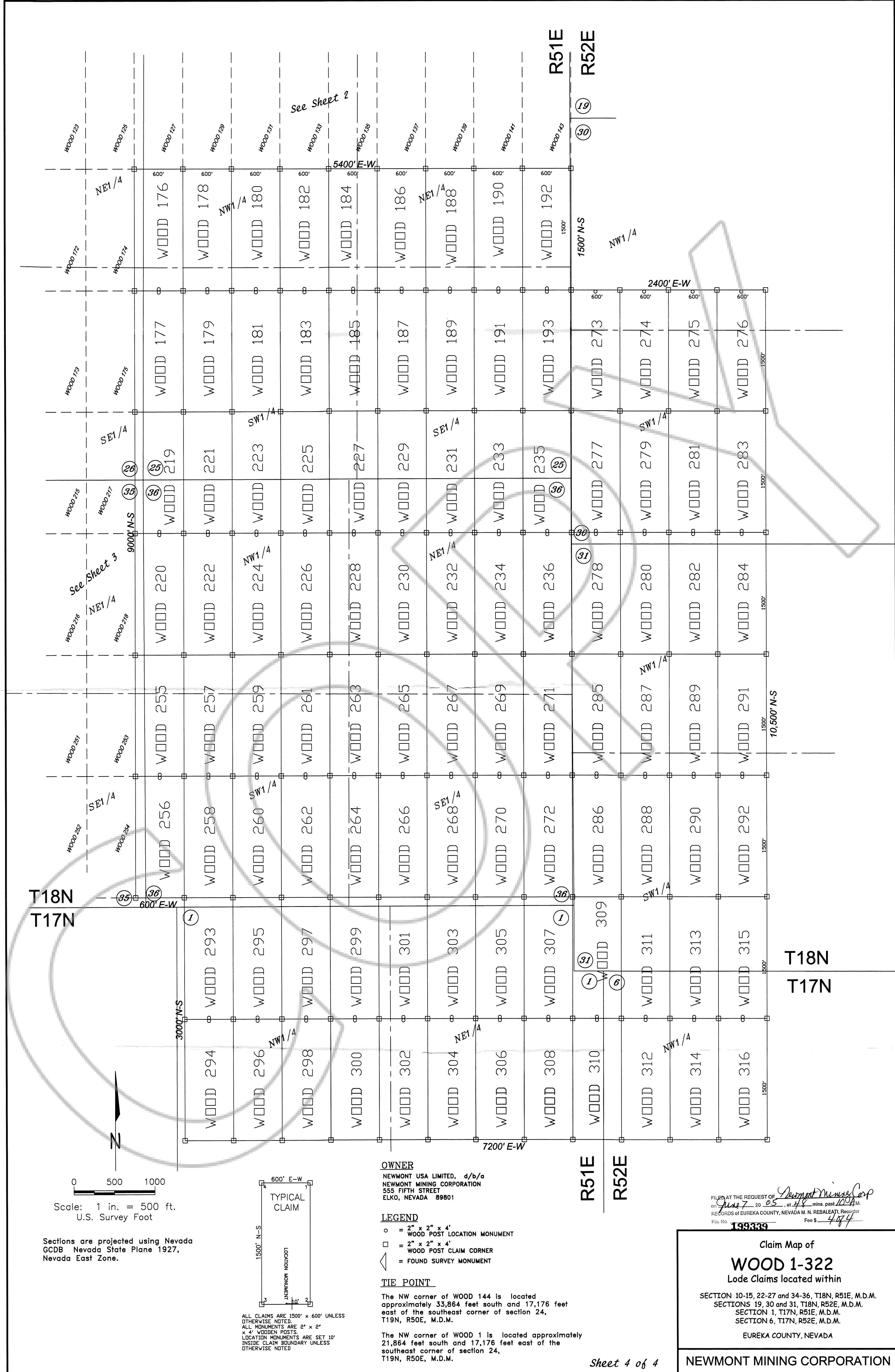
LEGEND
○ = 2" x 2" x 4' WOOD POST LOCATION MONUMENT
□ = 2" x 2" x 4' WOOD POST CLAIM CORNER
◁ = FOUND SURVEY MONUMENT

TIE POINT
The NW corner of WOOD 144 is located approximately 33,864 feet south and 17,176 feet east of the southeast corner of section 24, T19N, R50E, M.D.M.

The NW corner of WOOD 1 is located approximately 21,864 feet south and 17,176 feet east of the southeast corner of section 24, T19N, R50E, M.D.M.

FILED AT THE REQUEST OF *Newmont Mining Corp*
on *June 7, 2005* at *4:48* mins. past *8 A*
RECORDS OF EUREKA COUNTY, NEVADA M. N. REBELETTI, Recorder
File No. **199339** Fee \$ *39.4*

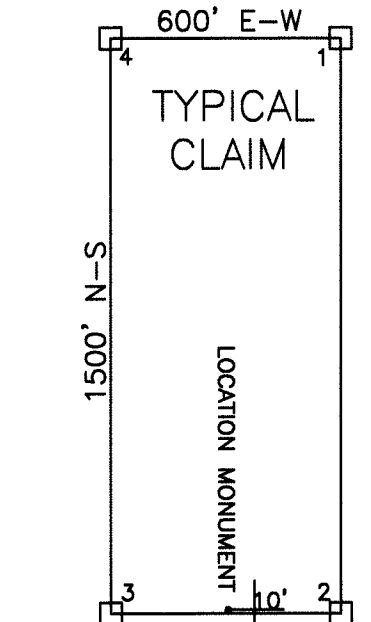
Claim Map of
WOOD 1-322
Lode Claims located within
SECTION 10-15, 22-27 and 34-36, T18N, R51E, M.D.M.
SECTION 19, 30 and 31, T18N, R52E, M.D.M.
SECTION 1, T17N, R51E, M.D.M.
SECTION 6, T17N, R52E, M.D.M.
EUREKA COUNTY, NEVADA



OWNER
 NEWMONT USA LIMITED, d/b/a
 NEWMONT MINING CORPORATION
 555 FIFTH STREET
 ELKO, NEVADA 89801

LEGEND
 ○ = 2" x 2" x 4"
 WOOD POST LOCATION MONUMENT
 □ = 2" x 2" x 4"
 WOOD POST CLAIM CORNER
 ◁ = FOUND SURVEY MONUMENT

TIE POINT
 The NW corner of WOOD 144 is located approximately 33,864 feet south and 17,176 feet east of the southeast corner of section 24, T19N, R50E, M.D.M.
 The NW corner of WOOD 1 is located approximately 21,864 feet south and 17,176 feet east of the southeast corner of section 24, T19N, R50E, M.D.M.



ALL CLAIMS ARE 1500' x 600' UNLESS OTHERWISE NOTED.
 ALL MONUMENTS ARE 2" x 2" x 4" WOODEN POSTS.
 LOCATION MONUMENTS ARE SET 10' INSIDE CLAIM BOUNDARY UNLESS OTHERWISE NOTED.

FILED AT THE REQUEST OF *Newmont Mining Corp*
 on *June 7* 20 *05*, at *48* mins. past *10:00* A.M.
 RECORDS OF EUREKA COUNTY, NEVADA M. N. REBALEATI, Recorder
 File No. *199339* Fee \$ *484*

Claim Map of
WOOD 1-322
 Lode Claims located within
 SECTION 10-15, 22-27 and 34-36, T18N, R51E, M.D.M.
 SECTIONS 19, 30 and 31, T18N, R52E, M.D.M.
 SECTION 1, T17N, R51E, M.D.M.
 SECTION 6, T17N, R52E, M.D.M.
 EUREKA COUNTY, NEVADA
NEWMONT MINING CORPORATION