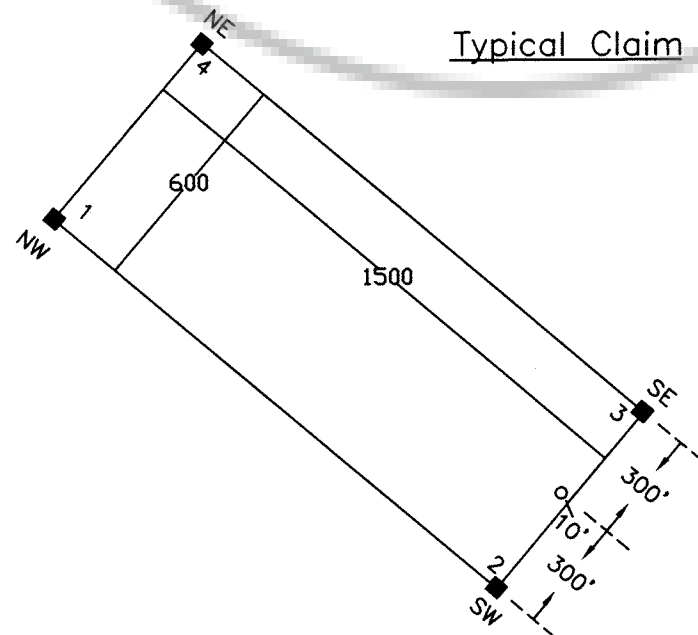
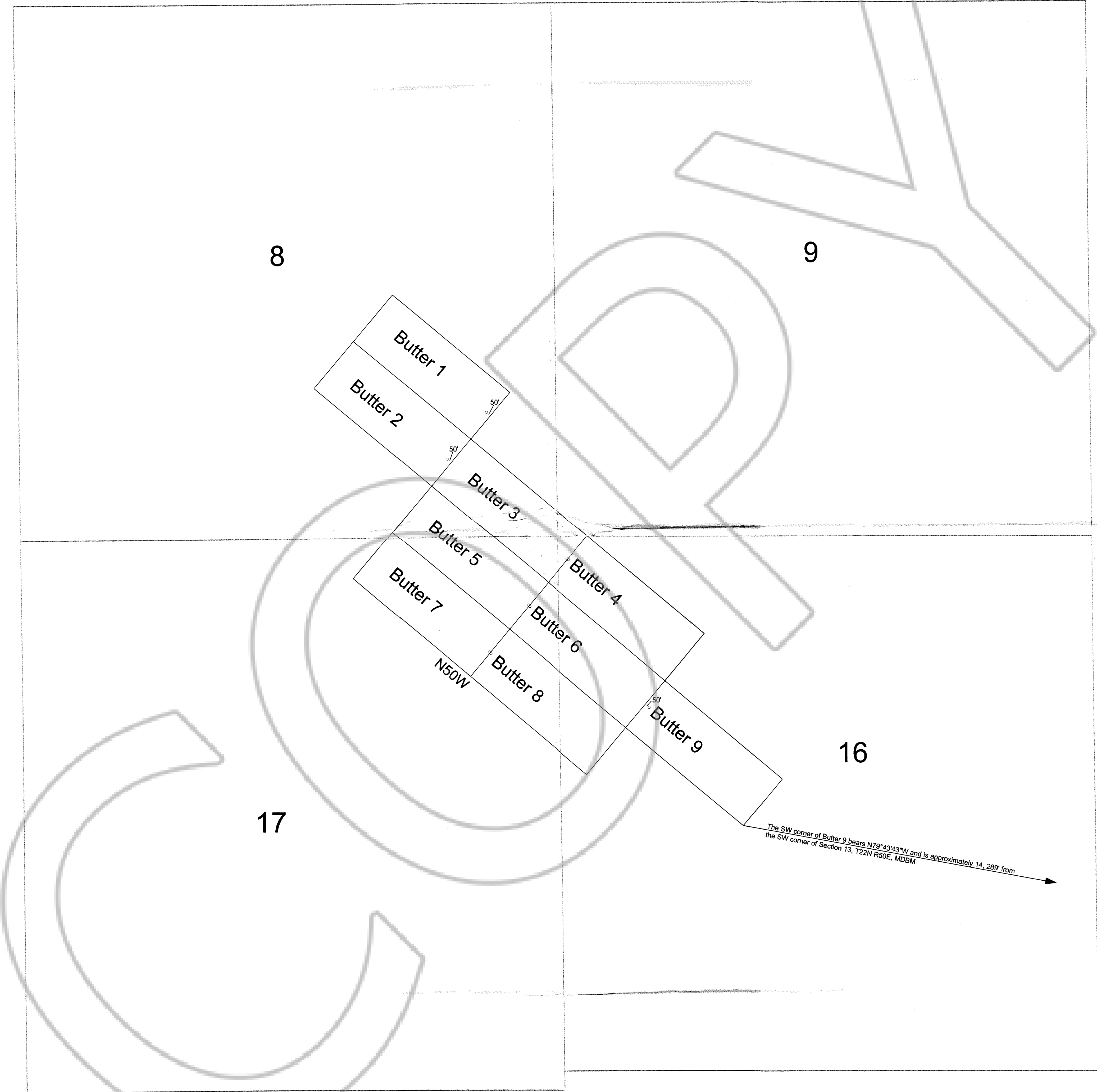




MAP OF THE BUTTER (1 - 9) GROUP
OF LODE CLAIMS

Unsurveyed Sections 8-9, 16-17, T22N, R50E, MDB&M
Unknown mining district, Eureka County, Nevada

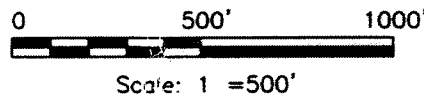
T22N R50E



° Location Monument

All claims are 1500' long X 600' wide.

All location monuments are set-in 10' from end lines EXCEPT
location monuments for Butter 1,2, & 9, which are 50' from end lines.
All monuments are 2" X 2" wooden posts marked with metal tags.



Location Dates:
Butter 1-2
Butter 3-9

April 8, 2005
April 7, 2005

Locator:
White Knight Gold (U.S.) Inc.
121 Woodland Ave., #140
Reno, NV 89523

FILED AT THE REQUEST OF White Knight Gold
on April 17, 2005 at 5:41 mins. past 2:00 M.
RECORDED BY EUREKA COUNTY, NEVADA M. N. REBALEATI Recorder
File No. 199537 Fee \$ 134.00