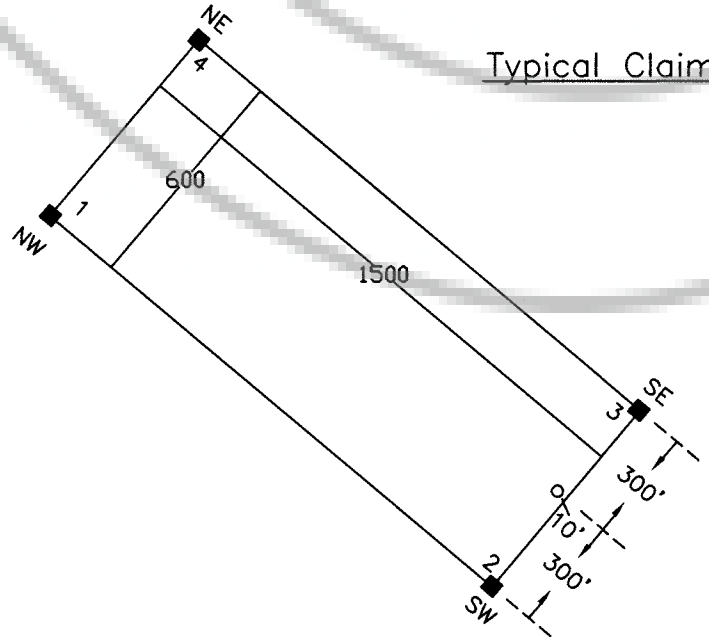
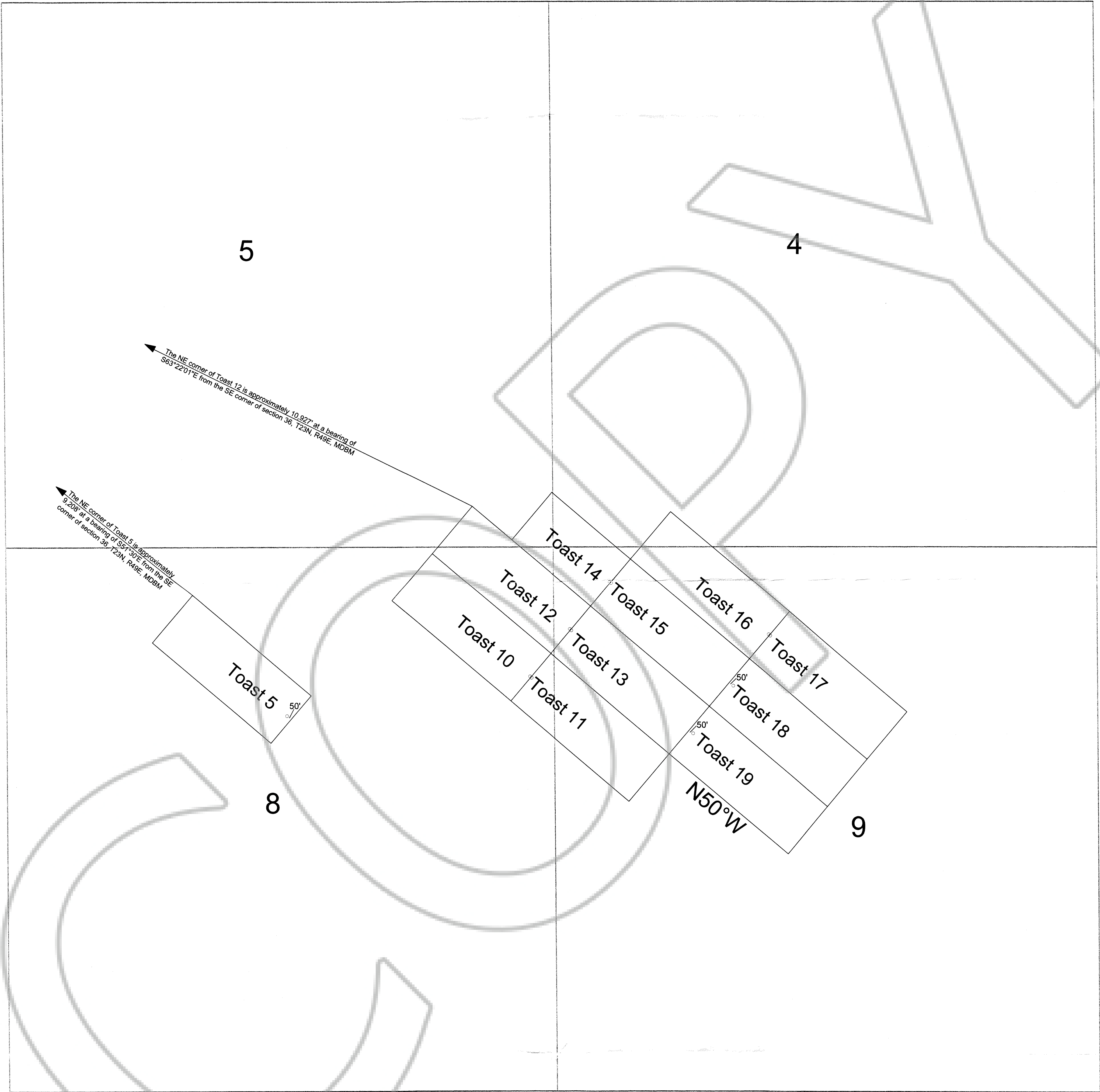




MAP OF THE TOAST (5, 10-19) GROUP OF LODE CLAIMS

Unsurveyed Sections 4-5, 8-9, T22N, R50E, MDB&M
Unknown mining district, Eureka County, Nevada

T22N R50E



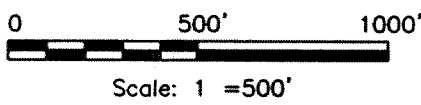
° Location Monument

All claims are 1500' long X 600' wide, except Toast 14, which is 1000' long.

All location monuments are set-in 10' from end lines EXCEPT

location monuments for Toast 5, 18, & 19, which are 50' from end lines.

All monuments are 2" X 2" wooden posts marked with metal tags.



Location Dates:
Toast 5, 10-19

April 8, 2005

Locator:
White Knight Gold (U.S.) Inc.
121 Woodland Ave., #140
Reno, NV 89523

FILED AT THE REQUEST OF White Knight Gold
on June 17 2005, at 59 mins. past 2:00 P.M.
RECORDS OF EUREKA COUNTY, NEVADA M. N. REBALEATI, Recorder
File No. 199549 Fee \$ 169.00