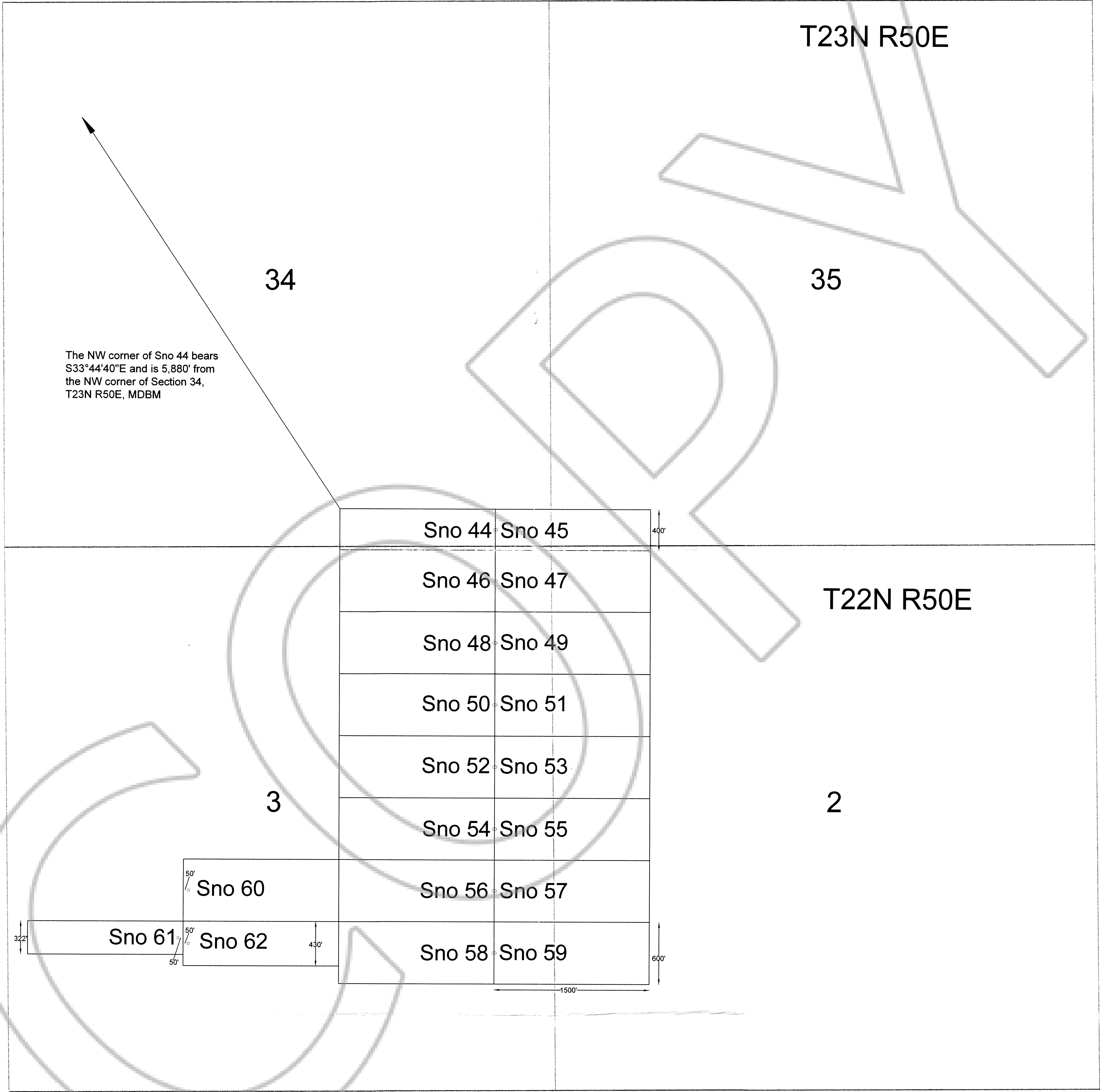
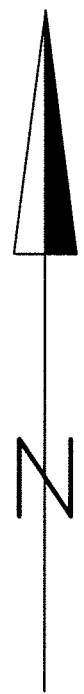
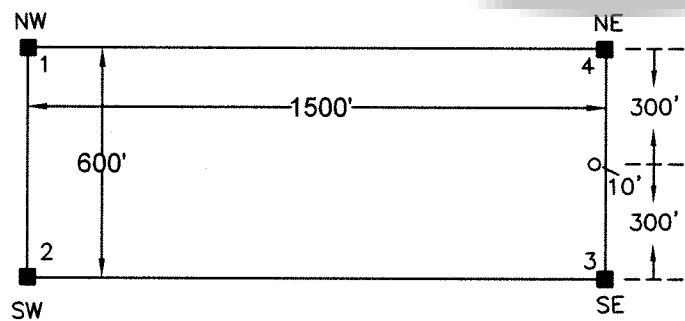


MAP OF THE SNO (44-62) GROUP
OF LODE CLAIMS

Unsurveyed Sections 2-3, T22N, R50E and
Sections 34-35 T23N, R50E MDB&M
Unknown mining district, Eureka County, Nevada



Typical Claim



° Location Monument

All claims are 1500' long X 600' wide, EXCEPT Sno 61, which is 322' wide; Sno 62, which is 430' wide; and Sno 44-45, which are 400' wide.

All location monuments are set back 10' from end lines EXCEPT location monuments for Sno 60-62, which are set back 50' from end lines.

All monuments are 2"x2"x4' wooden posts marked with scribed metal tags.

Location Dates:

Sno 44-52
Sno 53-62

April 21, 2005
June 20, 2005

Locator:

Quito Gold Corporation
121 Woodland Ave., #140
Reno, NV 89523

FILED AT THE REQUEST OF Quito Gold Corp
on July 5, 2005, at 11 mins. past 11 M.
RECORDS OF EUREKA COUNTY, NEVADA M. N. REBALEATI, Recorder
File No. 199909 Fee \$ 127.50