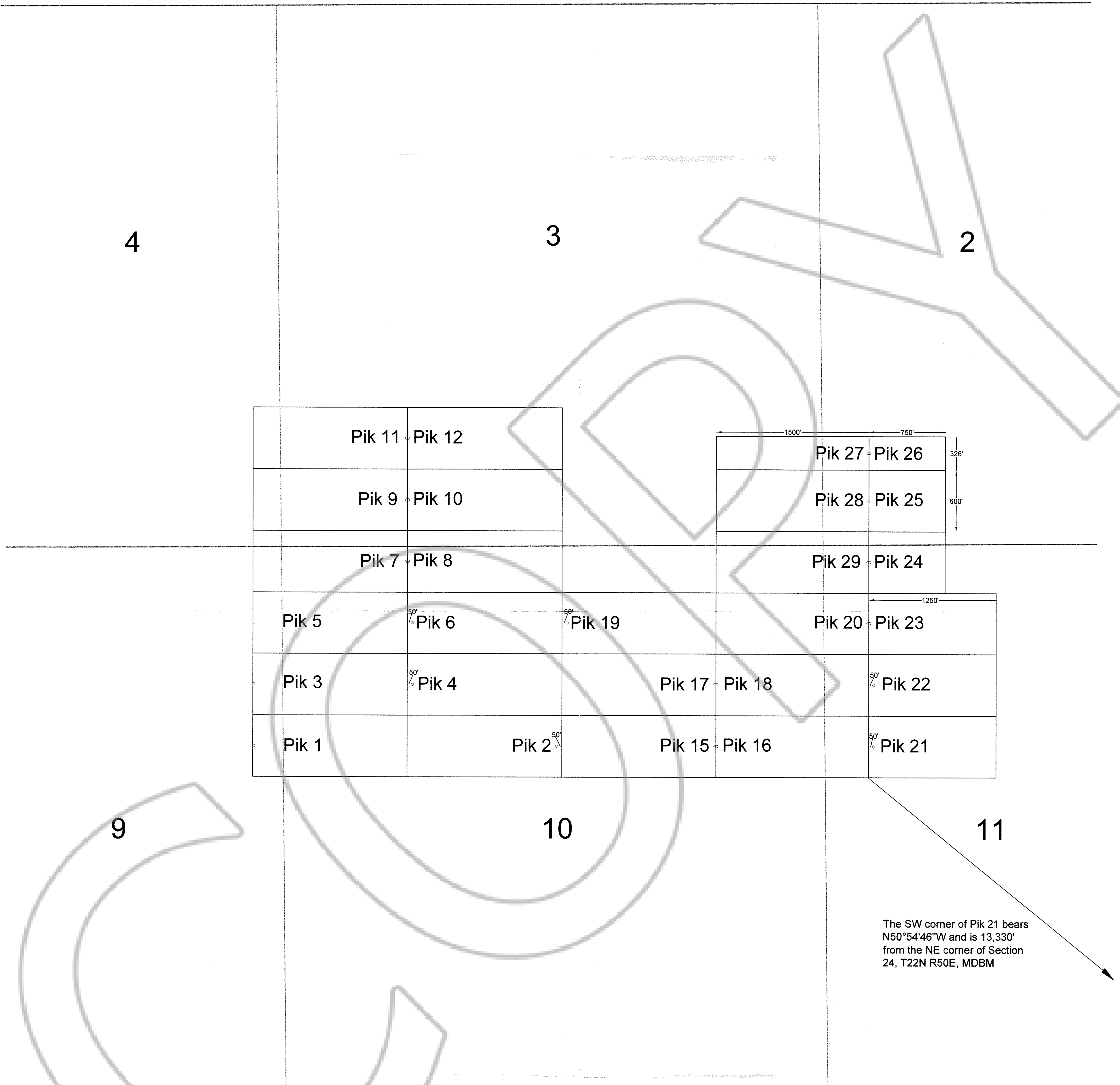


# MAP OF THE PIK (1-12, 15-29) GROUP OF LODE CLAIMS

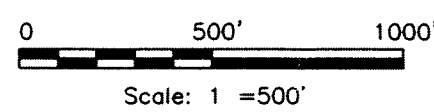
139937

Unsurveyed Sections 2-4, 9-11, T22N R50E, MDB&M  
Unknown mining district, Eureka County, Nevada

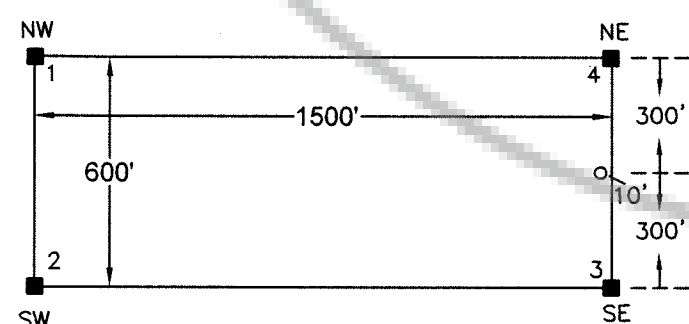
## T22N R50E



The SW corner of Pik 21 bears N50°54'46"W and is 13,330' from the NE corner of Section 24, T22N R50E, MDBM



Typical Claim



Location Monument

All claims are 1500' long X 600' wide, EXCEPT Pik 26-27, which are 326' wide; Pik 21-23 are 1250' long; Pik 24-26 are 750' long.

All location monuments are set back 10' from end lines EXCEPT location monuments for Pik 2, 4, 6, 19, 21, and 22, which are set back 50' from end lines.

All monuments are 2"x2"x4' wooden posts marked with scribed metal tags.

### Location Dates:

Pik 1-12	June 20, 2005
15-20	
22-29	
Pik 21	June 21, 2005

### Locator:

Quito Gold Corporation  
121 Woodland Ave., #140  
Reno, NV 89523

FILED AT THE REQUEST OF *Quito Gold Corp*  
on *July 5, 2005*, at *50* mins. past *1 P.M.*  
RECORDS OF THE COUNTY CLERK, NEVADA M. N. REBALEATI, Recorder  
File No. *139937* Fee \$ *177.50*