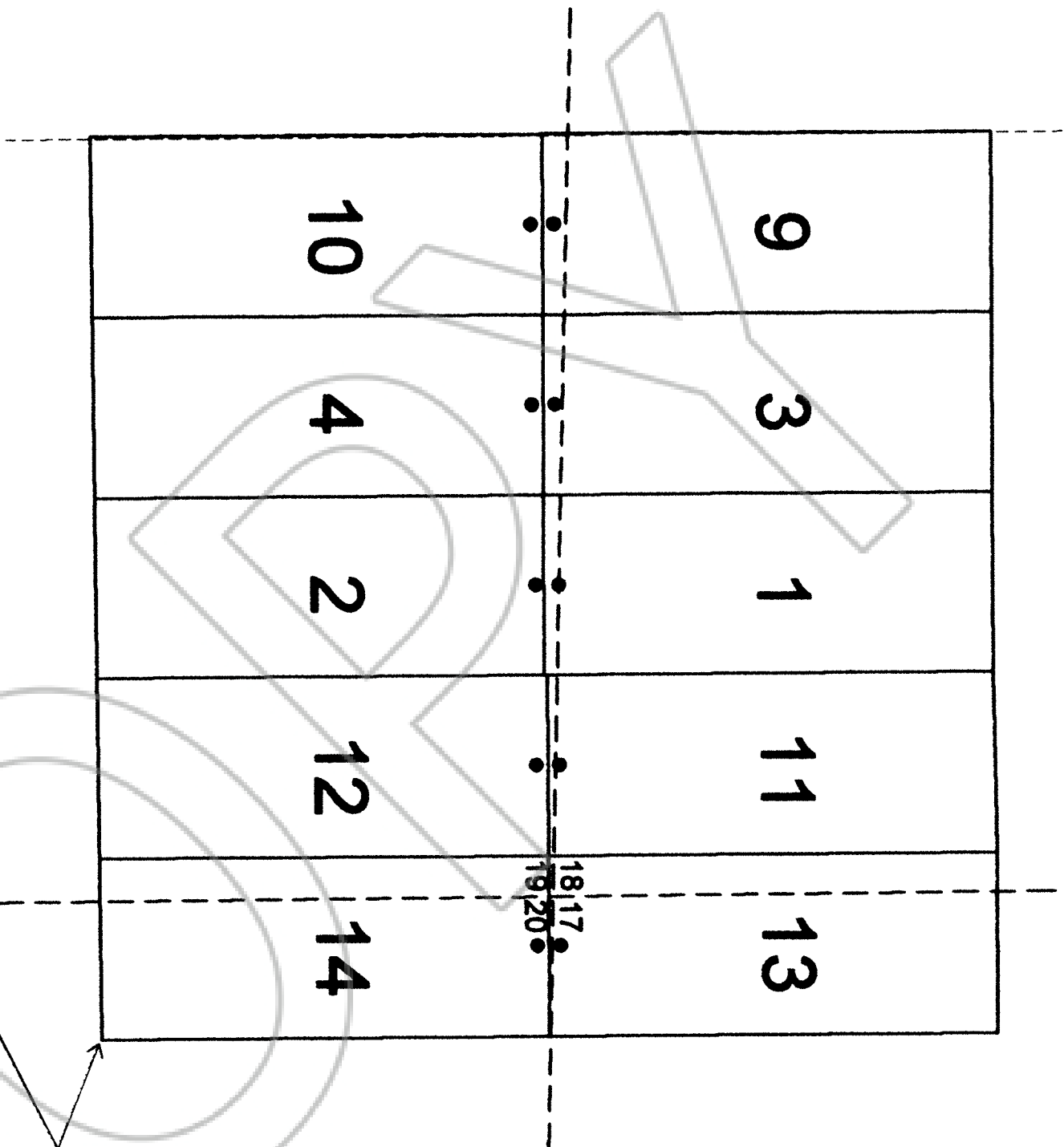


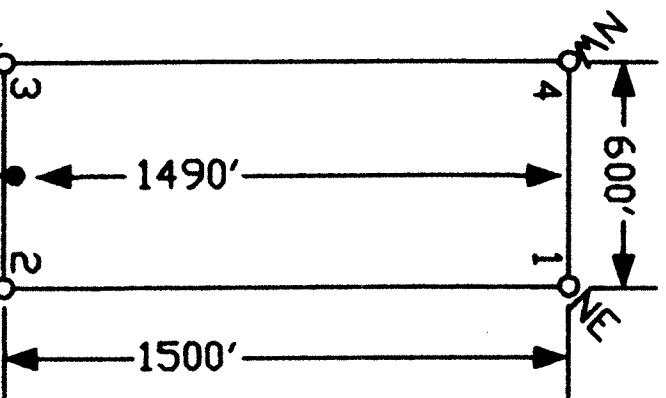
NOTES:
LOCATION MONUMENTS SET 10' FROM CLAIM END
CENTER LINES. ALL LOCATION MONUMENTS AND CLAIM
POSTS ARE 7 1/2" x 4" WOODEN STAKES.
DASHED SECTION LINES INDICATE PROJECTED SECTIONS.

T.24N., R.51E.



THE POINT DATA:
THE SOUTHEAST CORNER OF GABLE 14 LIES APPROXIMATELY
10.881 FEET EAST AND 6.817 FEET SOUTH OF THE NORTHEAST
CORNER OF SECTION 14, T.24N., R.50E., M.D.B.M.

TYPICAL CLAIM



LOCATION DATES:
April 15, 2005 - Gable 1-4
April 15, 2005 - Gable 9-14

(10 Total Claims)

Scale 1" = 500'
1:6000

FILED AT THE REQUEST OF *Great American Minerals, Inc.*
on *July 12, 2005*, at *36* mins. past *12* M.
RECORDS DEPARTMENT, NEVADA M. N. REBALEATI, Recorder
File No. *1999087* Fee \$ *154.00*



Great American Minerals, Inc.
3001 E. 1075 N., Ste B-300, West Jordan, UT 84088
Gable 1-4, 9-14 Lode Claims
12M, 251E; Esmeralda County, Nevada