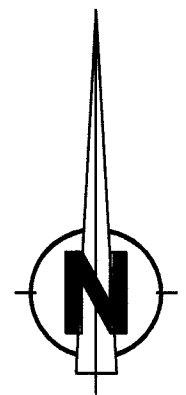
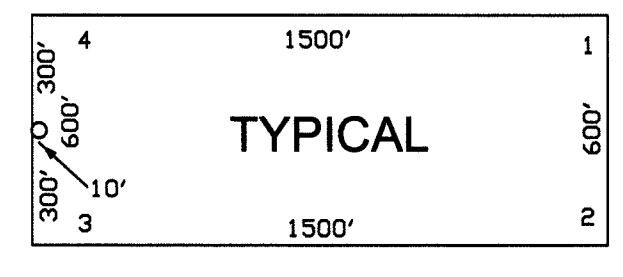


T32N, R49E MDM



0 500 1000 1500
1 INCH = 500 FEET



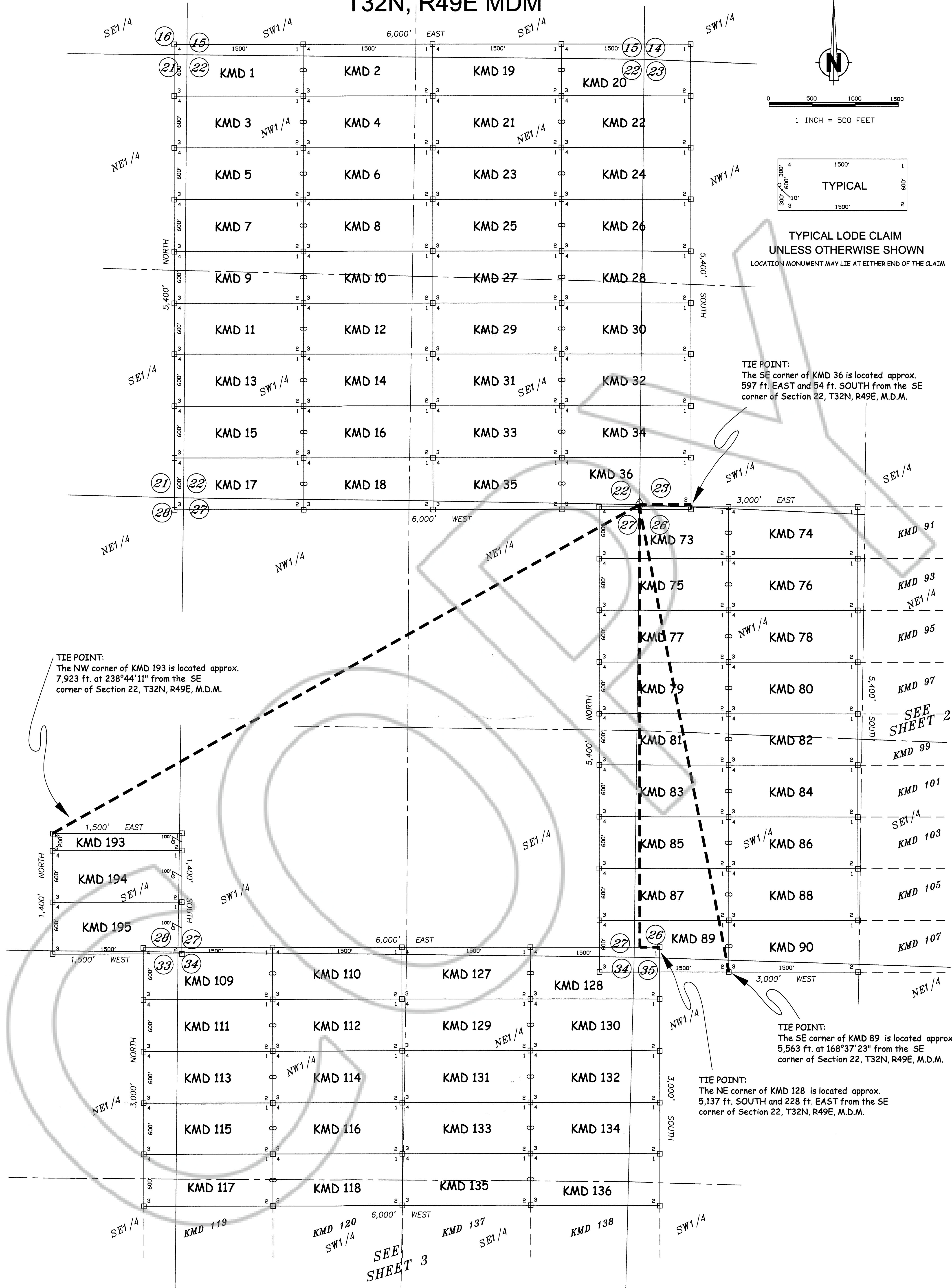
TYPICAL LODGE CLAIM
UNLESS OTHERWISE SHOWN
LOCATION MONUMENT MAY LIE AT EITHER END OF THE CLAIM

TIE POINT:
The SE corner of KMD 36 is located approx.
597 ft. EAST and 54 ft. SOUTH from the SE
corner of Section 22, T32N, R49E, M.D.M.

TIE POINT:
The NW corner of KMD 193 is located approx.
7,923 ft. at 238°44'11" from the SE
corner of Section 22, T32N, R49E, M.D.M.

TIE POINT:
The SE corner of KMD 89 is located approx.
5,563 ft. at 168°37'23" from the SE
corner of Section 22, T32N, R49E, M.D.M.

TIE POINT:
The NE corner of KMD 128 is located approx.
5,137 ft. SOUTH and 228 ft. EAST from the SE
corner of Section 22, T32N, R49E, M.D.M.



LEGEND:

- = 2" x 2" x 4" WOOD POST CLAIM CORNER
- = 2" x 2" x 4" WOOD POST LOCATION MONUMENT
- ◇ = FOUND SURVEY MONUMENT

OWNER:

NEWMONT USA LIMITED, d/b/a
NEWMONT MINING CORPORATION
555 FIFTH STREET
ELKO, NEVADA 89801

NOTES:

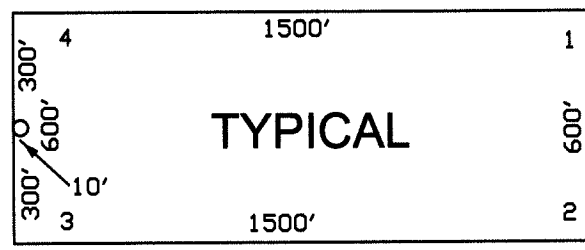
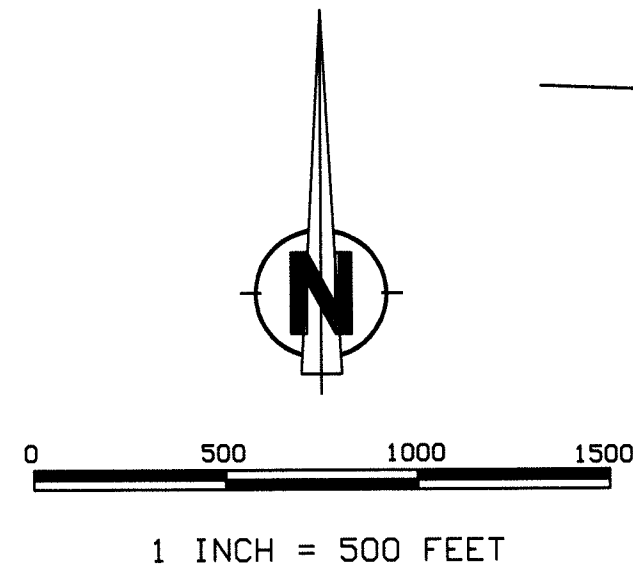
ALL LOCATION MONUMENTS AND CLAIM CORNERS ARE 2" x 2" x 4" WOOD.
ALL CLAIMS ARE 1500' LONG BY 600' WIDE UNLESS OTHERWISE SHOWN.
KMD 185, 186, 191-193 and 196 are 1500' x 200'

LOCATION MONUMENTS ARE SET ON THE CENTERLINE OF EACH CLAIM,
10 FEET FROM THE NEAR ENDLINE AND 1490 FEET FROM THE OPPOSITE ENDLINE, UNLESS OTHERWISE SHOWN.
LOCATION MONUMENT FOR KMD 193 - 198 ARE 100 FEET FROM NEAR ENDLINE AND 1400 FEET FROM THE OPPOSITE ENDLINE.

FILED AT THE REQUEST OF *Newmont Mining*
Aug 9 2005 at 5:55 mins. past 8A
RECORDS OF EUREKA COUNTY, NEVADA
200458

Claim Map of
KMD 1 - 198
Lode Claims located within
Sections 1-5 and 9-11, T31N, R49E, MDM
Sections 13-16, 21-28 and 32-36, T32N, R49E, MDM
Section 6, T31N, R50E, MDM
Sections 18, 19, 30 and 31, T32N, R50E, MDM
Eureka County, Nevada

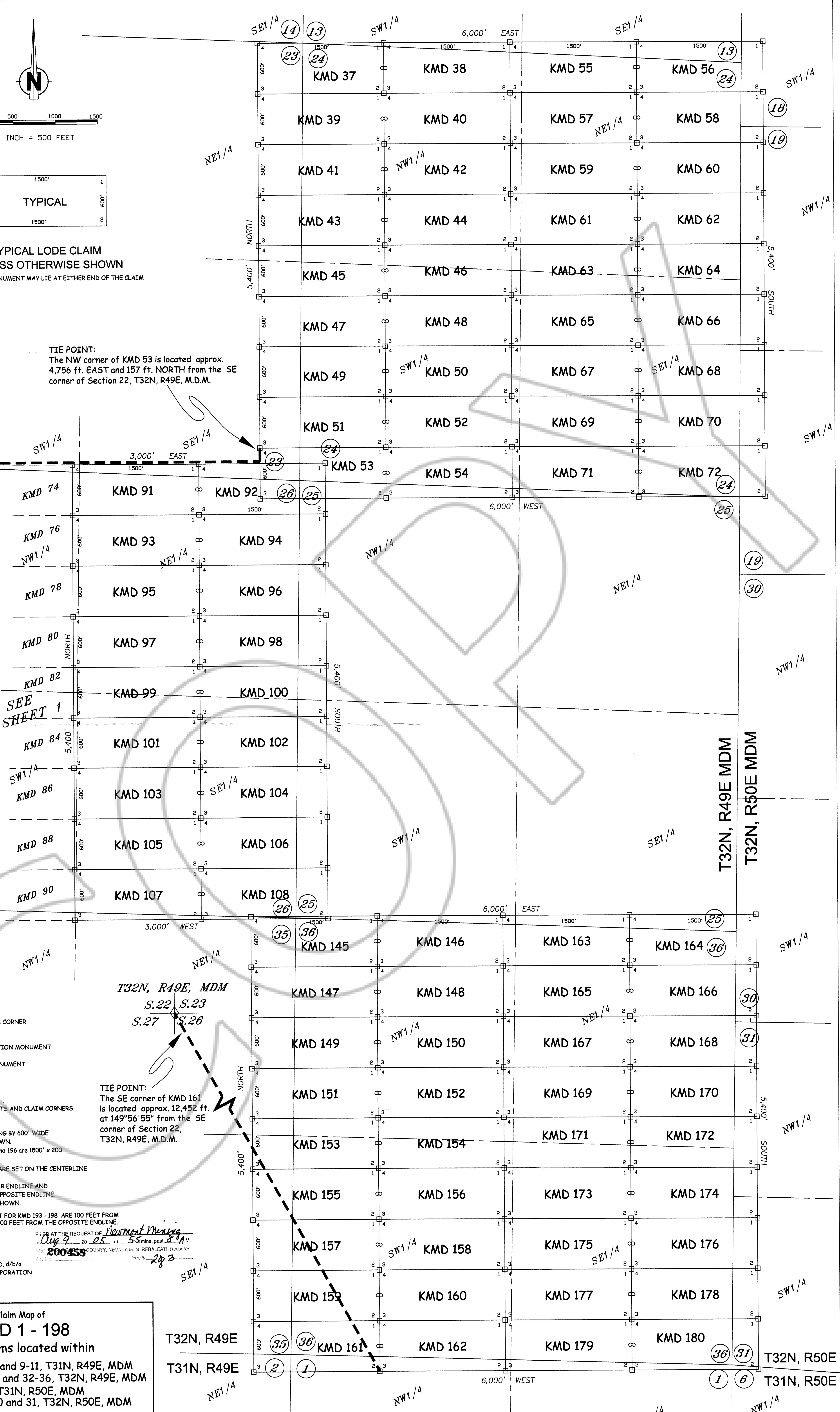
NEWMONT MINING CORPORATION



TYPICAL LODGE CLAIM
UNLESS OTHERWISE SHOWN
LOCATION MONUMENT MAY LIE AT EITHER END OF THE CLAIM

TIE POINT:
The NW corner of KMD 53 is located approx.
4,756 ft. EAST and 157 ft. NORTH from the SE
corner of Section 22, T32N, R49E, M.D.M.

T32N, R49E, MDM
S.22 S.23
S.27 S.26



LEGEND:

- = 2" x 2" x 4" WOOD POST CLAIM CORNER
- = 2" x 2" x 4" WOOD POST LOCATION MONUMENT
- ◇ = FOUND SURVEY MONUMENT

NOTES:

ALL LOCATION MONUMENTS AND CLAIM CORNERS ARE 2" x 2" x 4" WOOD.

ALL CLAIMS ARE 1500' LONG BY 600' WIDE UNLESS OTHERWISE SHOWN.
KMD 185, 186, 191-193 and 196 are 1500' x 200'

LOCATION MONUMENTS ARE SET ON THE CENTERLINE OF EACH CLAIM,
10 FEET FROM THE NEAR ENDLINE AND 1490 FEET FROM THE OPPOSITE ENDLINE, UNLESS OTHERWISE SHOWN.

LOCATION MONUMENT FOR KMD 193 - 198 ARE 100 FEET FROM NEAR ENDLINE AND 1400 FEET FROM THE OPPOSITE ENDLINE.

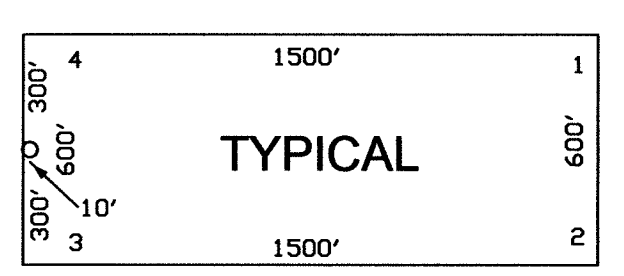
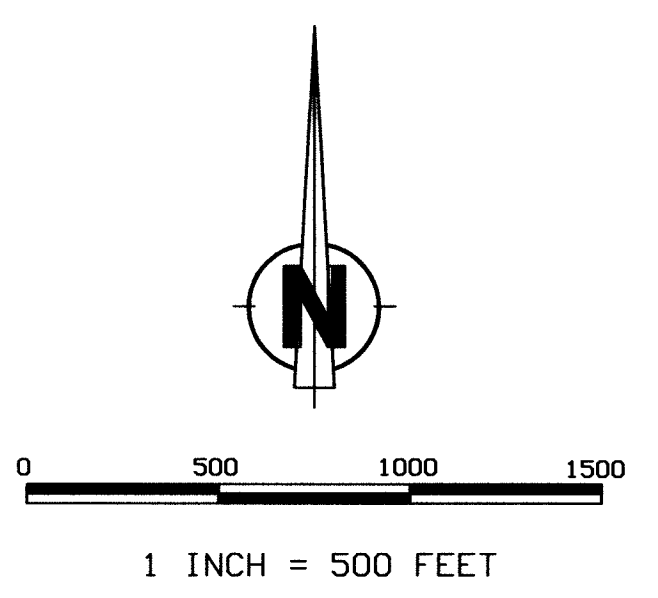
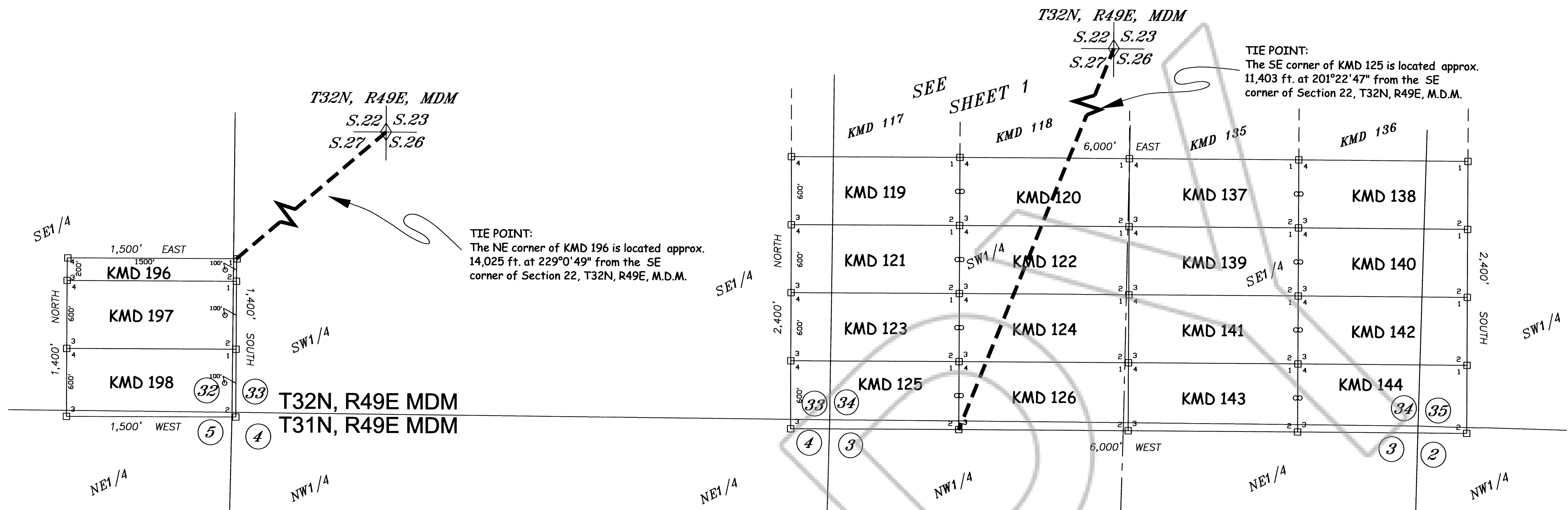
OWNER:

NEWMONT USA LIMITED, d/b/a
NEWMONT MINING CORPORATION
555 FIFTH STREET
ELKO, NEVADA 89801

TIE POINT:
The SE corner of KMD 161 is located approx. 12,452 ft. at 149°56'55" from the SE corner of Section 22, T32N, R49E, M.D.M.

FILED AT THE REQUEST OF Newmont Mining
Aug 9 20 05 at 55 mins past 8:14 AM
ELKO COUNTY, NEVADA IN N. REBALEATI, Recorder
200458 File # 293

Claim Map of
KMD 1 - 198
Lode Claims located within
Sections 1-5 and 9-11, T31N, R49E, MDM
Sections 13-16, 21-28 and 32-36, T32N, R49E, MDM
Section 6, T31N, R50E, MDM
Sections 18, 19, 30 and 31, T32N, R50E, MDM
Eureka County, Nevada



TYPICAL LODGE CLAIM
UNLESS OTHERWISE SHOWN
LOCATION MONUMENT MAY LIE AT EITHER END OF THE CLAIM

LEGEND:

- = 2" x 2" x 4" WOOD POST CLAIM CORNER
- = 2" x 2" x 4" WOOD POST LOCATION MONUMENT
- ◇ = FOUND SURVEY MONUMENT

NOTES:

ALL LOCATION MONUMENTS AND CLAIM CORNERS ARE 2" x 2" x 4" WOOD.

ALL CLAIMS ARE 1500' LONG BY 600' WIDE UNLESS OTHERWISE SHOWN.
KMD 185, 186, 191-193 and 196 are 1500' x 200'

LOCATION MONUMENTS ARE SET ON THE CENTERLINE OF EACH CLAIM.
10 FEET FROM THE NEAR ENDLINE AND 1490 FEET FROM THE OPPOSITE ENDLINE, UNLESS OTHERWISE SHOWN.

LOCATION MONUMENT FOR KMD 193 - 198 ARE 100 FEET FROM NEAR ENDLINE AND 1400 FEET FROM THE OPPOSITE ENDLINE.

OWNER:

NEWMONT USA LIMITED, d/b/a
NEWMONT MINING CORPORATION
555 FIFTH STREET
ELKO, NEVADA 89801

Claim Map of
KMD 1 - 198
Lode Claims located within
Sections 1-5 and 9-11, T31N, R49E, MDM
Sections 13-16, 21-28 and 32-36, T32N, R49E, MDM
Section 6, T31N, R50E, MDM
Sections 18, 19, 30 and 31, T32N, R50E, MDM
Eureka County, Nevada

FILED AT THE REQUEST OF Newmont Mining
on Aug 9 2005, at 55 mins past 8 A.M.
RECORDED AT EUREKA COUNTY, NEVADA M. N. REBALEATI, Recorder
200458 Fee \$ 383