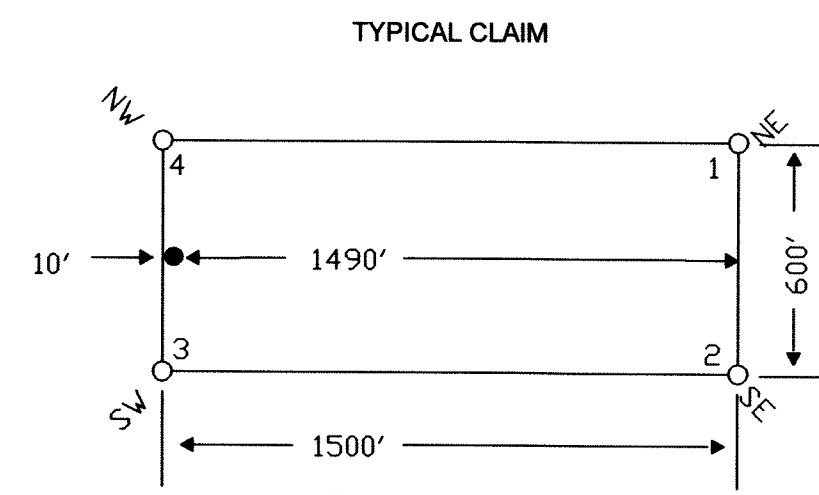
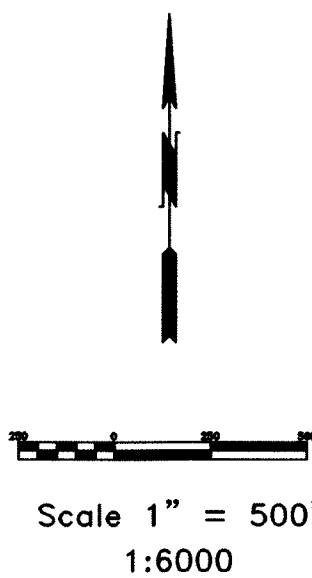




Locator:
 Idaho Resources Corporation
 PO Box 2183, Grand Junction, CO 81502
 Lode Claims
 T.25N., R.49,50E.; Eureka County, NV

369 - 5th STREET
 PH: (775) 778-0668 ELKO, NV 89801 FAX: (775) 778-0687

DATE: July 2005
 ACAD FILE NAME: clients\idaho\res\RedHills1.dwg
 DRAWN BY: sms
 PLOT SCALE: 1" = 500'
 Sheet 1 of 2



LOCATION DATES:
 JUNE 14, 2005 - CVX1-CVX4, CVX, CV, CV1-CV11, CWX, CW, CW1-CW11
 JUNE 15, 2005 - CSX, CSX1-CSX2, CT1-CT3, CT6-CT7, CT, CTX, CTX1-CTX4, CU1-CU7, CU, CUX, CUX1-CUX4
 JUNE 16, 2005 - CRX3-CRX4, CS, CS1, CSX3-CSX4
 JUNE 20, 2005 - COX2-COX5, CQ1, CQX, CQX1-CQX5, CR1, CRX, CRX1-CRX3
 JUNE 21, 2005 - CKX2-CKX5, CLX2-CLX5, CMX2-CMX5, CNX2-CNX5
 (95 Total Claims)

NOTES:
 LOCATION MONUMENTS SET 10' FROM CLAIM END CENTERLINES
 UNLESS NOTED ON MAP. ALL LOCATION MONUMENTS AND CLAIM
 POSTS ARE 2"x2"x4' WOODEN STAKES.

DASHED SECTION LINES INDICATE PROJECTED SECTIONS.

LED AT THE REQUEST OF Idaho Resources
 7/19/05, at 2:22 mins, past 2 PM
 RECORDS OF EUREKA COUNTY, NEVADA
 J.N. REBALEATI, Recorder
 File No. 201069 Fee \$ 1429.00

R.49E
 R.50E

TIE POINT DATA:
 THE NORTHWEST CORNER OF CKX2 LIES APPROXIMATELY
 16,282 FEET WEST AND 2,313 FEET NORTH OF THE SOUTHEAST
 CORNER OF SECTION 33, T.25N., R.50E., M.D.B.M.

TIE POINT DATA:
 THE NORTHWEST CORNER OF CS1 LIES APPROXIMATELY
 5,391 FEET WEST AND 4,197 FEET NORTH OF THE SOUTHEAST
 CORNER OF SECTION 33, T.25N., R.50E., M.D.B.M.

36

31

32

33

CKX2	..	CLX2	CMX2	..	CNX2	COX2	..	CQX2	CRX2	CSX1	CTX1	..	CUX1	
CKX3	..	CLX3	CMX3	..	CNX3	COX3	..	CQX3	CRX3	CSX2	CTX2	..	CUX2	
CKX4	..	CLX4	CMX4	..	CNX4	COX4	..	CQX4	CRX3A	..	CSX3	CTX3	..	CUX3
CKX5	..	CLX5	CMX5	..	CNX5	COX5	..	CQX5	CRX4	..	CSX4	CTX4	..	CUX4

28

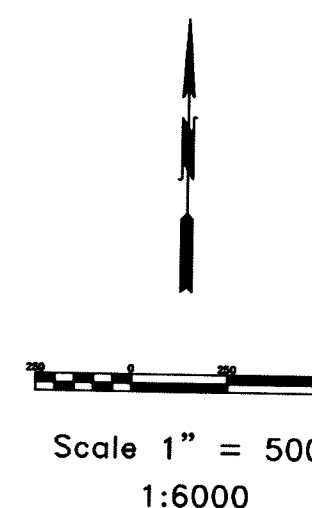
CT7	..	CU7
CT6	..	CU6
	..	CU5
	..	CU4
CT3	..	CU3

CT2	..	CU2
CT1	..	CU1
CT	..	CU
CTX	..	CUX

CONTINUED ON SHEET 2

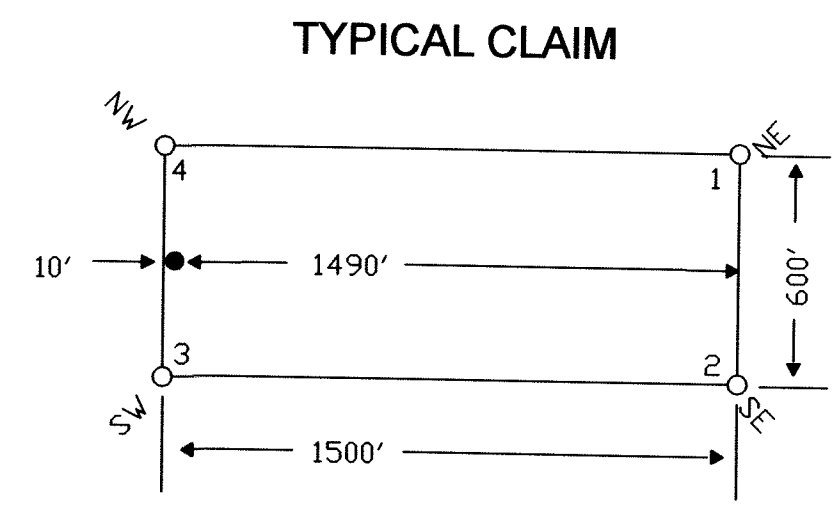
TIE POINT DATA:
 THE NORTHWEST CORNER OF CT7 LIES APPROXIMATELY
 3,917 FEET WEST AND 7,807 FEET NORTH OF THE SOUTHEAST
 CORNER OF SECTION 33, T.25N., R.50E., M.D.B.M.

FILED AT THE REQUEST OF *Idaho Resources*
 on *7/6* 2005, at *10:22* mins. past *2* P.M.
 RECORDS OF EUREKA COUNTY, NEVADA
 M.N. REBALEATI, Recorder
 File No. **201069** Fee \$ *282*



T.25N.,R.50E.

			CV11	..	CW11				
			CV10	..	CW10				
			CV9	..	CW9				
			CV8	..	CW8				
		CT7 28	CV7	..	CW7 27				
		CT6	..	CU6	CV6	..	CW6		
			CU5	.	CV5	..	CW5		
			CU4	.	CV4	..	CW4		
		CT3	LM Offset 50 Ft.	CU3	..	CV3	..	CW3	
		CT2	..	CU2	CV2	..	CW2		
		CT1	..	CU1	CV1	..	CW1		
		CS	..	CU	CV	..	CW		
		CSX	..	CTX 33	..	CUX	CVX	..	CWX 34
		CSX1	..	CTX1	..	CUX1	CVX1	.	
		CSX2	..	CTX2	..	CUX2	CVX2	.	
		CSX3	..	CTX3	..	CUX3	CVX3	.	
		CSX4	..	CTX4	..	CUX4	CVX4	.	



NOTES:
 LOCATION MONUMENTS SET 10' FROM CLAIM END
 CENTERLINES. ALL LOCATION MONUMENTS AND CLAIM
 POSTS ARE 2"x2"x4' WOODEN STAKES.
 DASHED SECTION LINES INDICATE PROJECTED SECTIONS.

LOCATION DATES:
 JUNE 14, 2005 - CVX1-CVX4, CVX, CV, CV1-CV11, CWX, CW, CW1-CW11
 JUNE 15, 2005 - CSX, CSX1-CSX2, CT1-CT3, CT6-CT7, CT, CTX, CTX1-CTX4, CU1-CU7, CU, CUX, CUX1-CUX4
 JUNE 16, 2005 - CRX3-CRX4, CS, CS1, CSX3-CSX4
 JUNE 20, 2005 - COX2-COX5, CQ1, CQX, CQX1-CQX5, CR1, CRX, CRX1-CRX3
 JUNE 21, 2005 - CKX2-CKX5, CLX2-CLX5, CMX2-CMX5, CNX2-CNX5
 (95 Total Claims)

CONTINUED ON SHEET 1



Locator:
 Idaho Resources Corporation
 PO Box 2183, Grand Junction, CO 81502
 Lode Claims
 T.25N.,R.49,50E.; Eureka County, NV

369 - 5th STREET
 PH: (775) 778-0668 ELKO, NV 89801 FAX: (775) 778-0687

DATE: July 2005
 ACAD FILE NAME: clients\idaho\res\redhills2.dwg
 PLOT SCALE: 1" = 500'
 DRAWN BY: sms
 Sheet 2 of 2