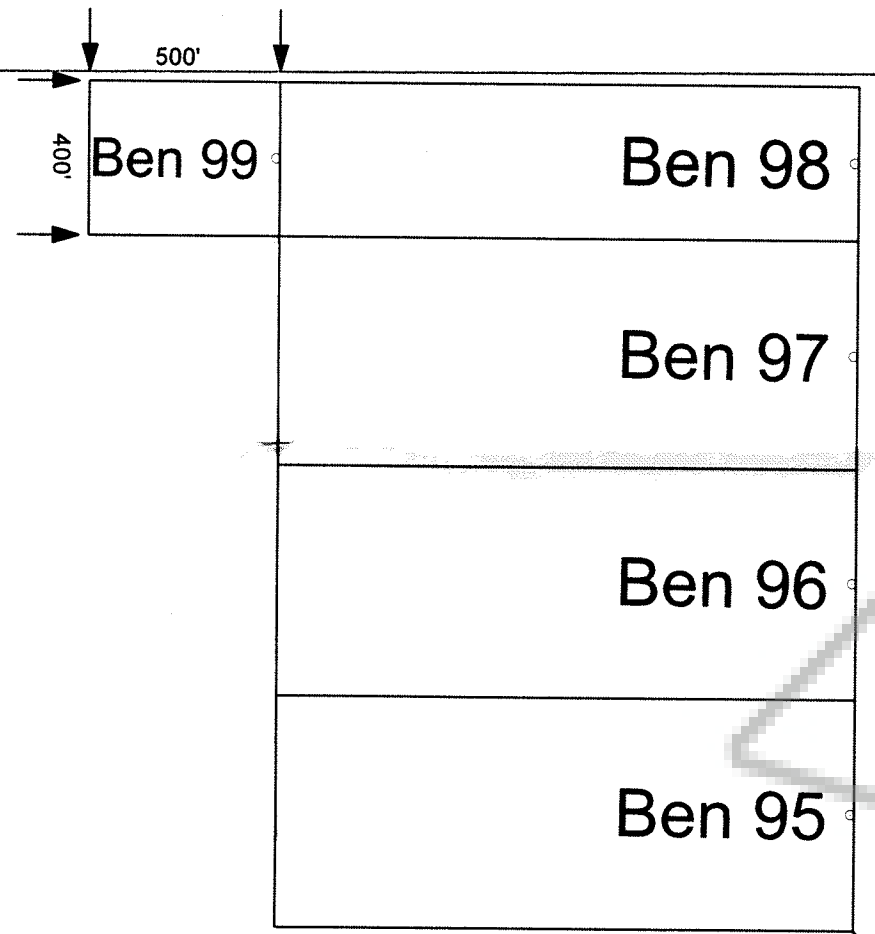


5

4

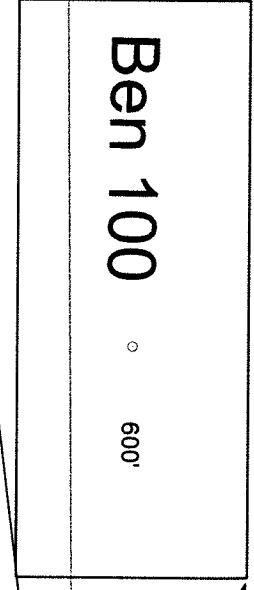


The SE Corner of Gin 56 bears N7°9'W and is 4689' from the SE corner of Section 8 T22N R50E



The SE Corner of Ben 95 bears N31°7'W and is 3545' from the SE corner of Section 9 T22N R50E

8



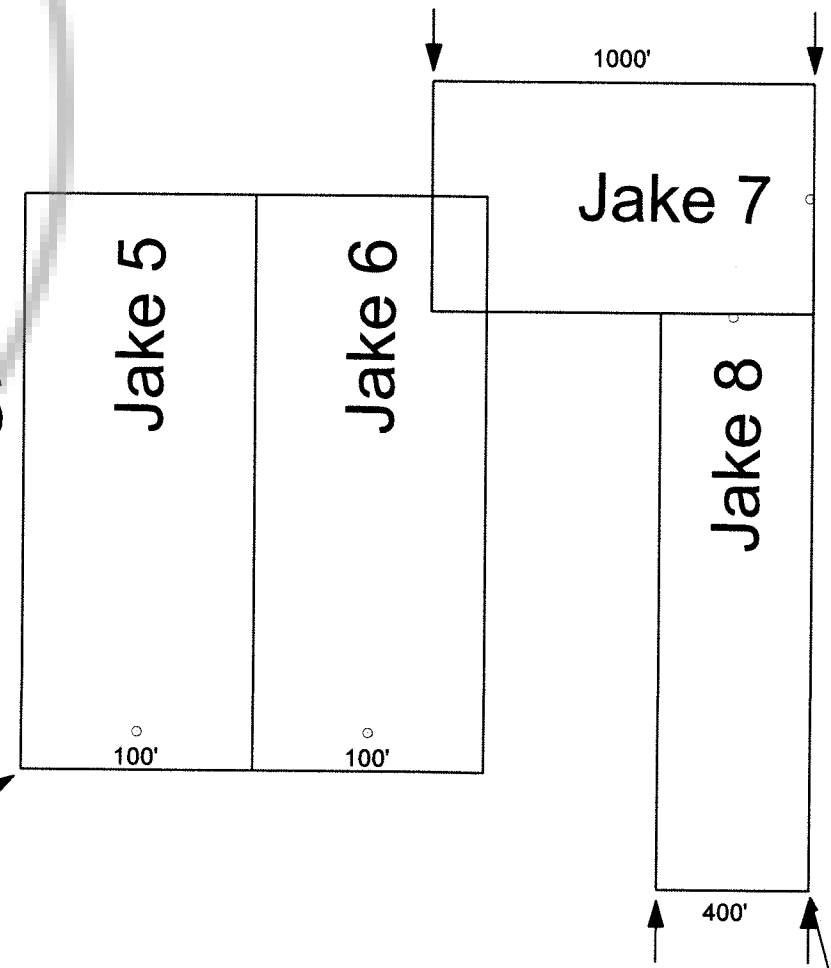
The SE Corner of Ben 100 bears N19°31'E and is 1327' from the SE corner of Section 8 T22N R50E

9

17

16

The SW Corner of Jake 5 bears N58°42'E and is 3306' from the SW corner of Section 16 T22N R50E



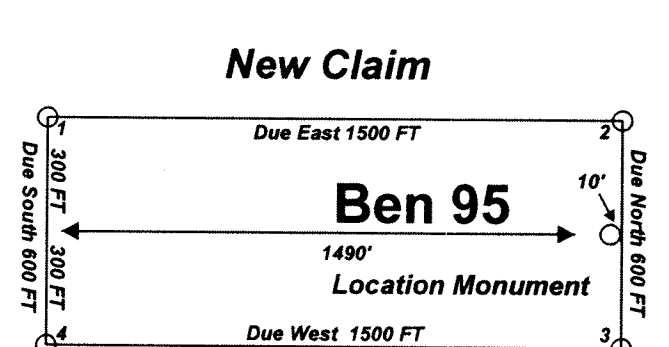
The SE Corner of Jake 8 bears N15°19'W and is 1463' from the SE corner of Section 16 T22N R50E

T22N R50E

**Claim Location Map for Jake 5-8, Ian 53-57, Gin 53-56, Ben 95-100**  
**Map 1 of 2**

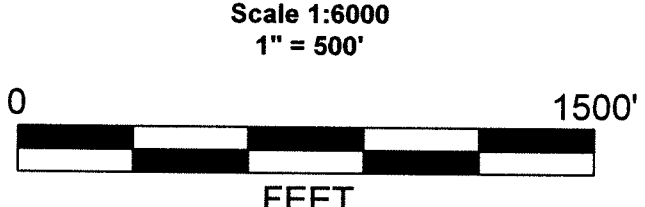
"Jake" lode claims 5-8 were located on June 29, 2005 in Section 16 Township 22 North Range 50 East.  
 "Ian" lode claims 53-57 were located on June 30, 2005 in sections 27, 28, 33, and 34 Township 23 North Range 50 East.  
 "Gin" lode claim 55 was located on June 30, 2005 in section 5 Township 22 North Range 50 East.  
 "Ben" lode claims 95-99 were located on July 1, 2005 in section 9 Township 22 North Range 50 East.  
 "Gin" lode claim 56 and "Ben" lode claim 100 were located on July 12, 2005 in sections 8 and 9 Township 22 North Range 50 East.  
 "Gin" lode claims 53 and 54 were located on July 13, 2005 in sections 31 and 32 Township 23 North Range 50 East and sections 5 and 6 Township 22 North Range 50 East. Eureka County, Nevada

Locator:  
 White Knight Gold (U.S.) Inc.  
 121 Woodland Ave Suite #140  
 Reno Nv. 89523-8906



FILED AT THE REQUEST OF *White Knight Gold*  
 on *7/21/2005* at *3:38* mins. past *11* A.M.  
 RECORDS OF EUREKA COUNTY, NEVADA  
 J.A.N. REBALEATI, Recorder  
 File No. **201115** Fee \$ *94.00*

Notes:  
 Location Monuments are set 10' from claim end lines unless noted otherwise. All location and corner monuments are 2" X 2" X 4' wooden posts with scribed metal tags. All claims are 600' by 1500' unless noted otherwise.



MINING CLAIM LOCATION MAP
Jake 5-8, Ian 53-57, Gin 53-56, Ben 95-100 Lode Mining Claims
White Knight Gold (U.S.) Inc. 121 Woodland Ave Suite #140 Reno Nv. 89523-8906
6_Small_Claim_Blocks.dwg August 11, 2005
Drawn By: G.I.S. Land Services
Surveyed By: T&T Exploration L.L.C.
Datum: 1927 Projection: UTM Zone 11 Units: Feet