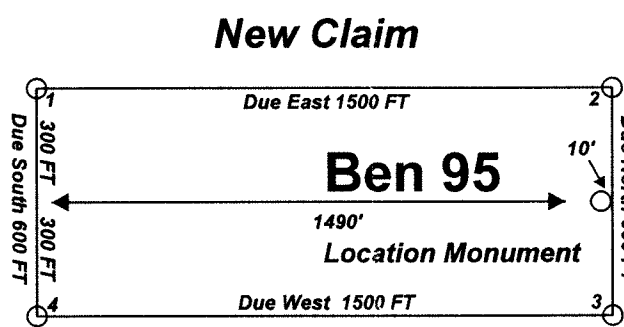


FILED AT THE REQUEST OF White Knight Gold
IN 2012 MINES, past 114 M
RECORDS OF EUREKA COUNTY, NEVADA
JENN. REBALEATI, Recorder
File No. 20121 Fee \$ 64.00

"Jake" lode claims 5-8 were located on June 29, 2005 in Section 16 Township 22 North Range 50 East.
"Ian" lode claims 53-57 were located on June 30, 2005 in sections 27, 28, 33, and 34 Township 23 North Range 50 East.
"Gin" lode claim 55 was located on June 30, 2005 in section 5 Township 22 North Range 50 East.
"Ben" lode claims 95-99 were located on July 1, 2005 in section 9 Township 22 North Range 50 East.
"Gin" lode claim 56 and "Ben" lode claim 100 were located on July 12, 2005 in sections 8 and 9 Township 22 North Range 50 East.
"Gin" lode claims 53 and 54 were located on July 13, 2005 in sections 31 and 32 Township 23 North Range 50 East and sections 5 and 6 Township 22 North Range 50 East. Eureka County, Nevada

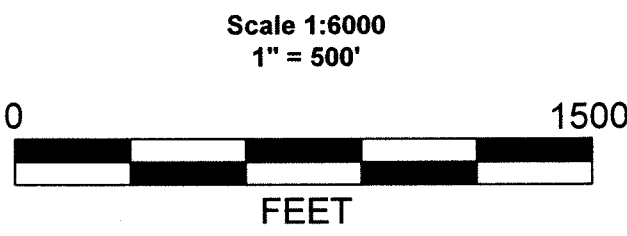
Locator:
White Knight Gold (U.S.) Inc.
121 Woodland Ave Suite #140
Reno Nv. 89523-8906

Claim Location Map for Jake 5-8, Ian 53-57, Gin 53-56, Ben 95-100
Map 1 of 2



Notes:
Location Monuments are set 10' from claim end lines unless noted otherwise. All location and corner monuments are 2" X 2"X 4' wooden posts with scribed metal tags. All claims are 600' by 1500' unless noted otherwise.

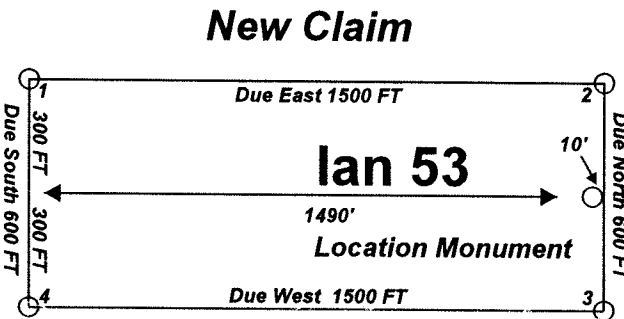
FILED AT THE REQUEST OF _____
IN _____ MINES, past _____ M
RECORDS OF EUREKA COUNTY, NEVADA
JENN. REBALEATI, Recorder
File No. _____ Fee \$ _____



MINING CLAIM LOCATION MAP Jake 5-8, Ian 53-57, Gin 53-56, Ben 95-100 Lode Mining Claims White Knight Gold (U.S.) Inc. 121 Woodland Ave Suite #140 Reno Nv. 89523-8906 6_Small_Claim_Blocks.dwg August 11, 2005 Drawn By: G.I.S. Land Services Surveyed By: T&T Exploration L.L.C. Datum: 1927 Projection: UTM Zone 11 Units: Feet

Claim Location Map
for Jake 5-8, Ian 53-57, Gin 53-56,
Ben 95-100
Map 2 of 2

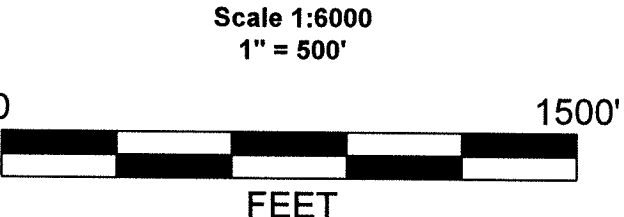
"Jake" lode claims 5-8 were located on June 29, 2005 in Section 16 Township 22 North Range 50 East.
"Ian" lode claims 53-57 were located on June 30, 2005 in sections 27, 28, 33, and 34 Township 23 North Range 50 East.
"Gin" lode claim 55 was located on June 30, 2005 in section 5 Township 22 North Range 50 East.
"Ben" lode claims 95-99 were located on July 1, 2005 in section 9 Township 22 North Range 50 East.
"Gin" lode claim 56 and "Ben" lode claim 100 were located on July 12, 2005 in sections 8 and 9 Township 22 North Range 50 East.
"Gin" lode claims 53 and 54 were located on July 13, 2005 in sections 31 and 32 Township 23 North Range 50 East and sections 5 and 6 Township 22 North Range 50 East. Eureka County, Nevada



Notes:
Location Monuments are set 10' from claim end lines unless noted otherwise.
All location and corner monuments are 2" X 2" X 4' wooden posts with scribed metal tags. All claims are 600' by 1500' unless noted otherwise.

FILED AT THE REQUEST OF *White Knight Gold*
9/21/20 10:52 AM 50 mins. past 11 A.M.
RECORDS OF EUREKA COUNTY, NEVADA
M.N. REBALEATI, Recorder
File No. *201137* Fee \$ *64.00*

Locator:
White Knight Gold (U.S.) Inc.
121 Woodland Ave Suite #140
Reno Nv. 89523-8906



MINING CLAIM LOCATION MAP
Jake 5-8, Ian 53-57, Gin 53-56, Ben 95-100 Lode Mining Claims
White Knight Gold (U.S.) Inc.
121 Woodland Ave Suite #140
Reno Nv. 89523-8906
6_Small_Claim_Blocks.dwg
August 11, 2005
Drawn By: G.I.S. Land Services
Surveyed By: T&T Exploration L.L.C.
Datum: 1927 Projection: UTM Zone 11
Units: Feet

The NW Corner of Ian 53
bears N75°16'E and is
2362' from the SW corner
of Section 28 T23N R50E

The NW Corner of Gin 53
bears S18°41'W and is
3698' from the NE corner
of Section 31 T23N R50E

The SE Corner of Gin 55
bears S38°27'W and is
778' from the NE corner
of Section 5 T22N R50E