

18

17

201213

19

20

The NW Corner of CSAMT 67A bears N49°12' 44" E and is 5687' from the SW corner of Section 19 T22N R50E

N60°E

CSAMT 67A

CSAMT 69A

CSAMT 71A

CSAMT 73A

CSAMT 75A

N30°W

600'

1500'

T22N R50E

30

29

"CSAMT" lode claims 67A, 69A, 71A, 73A, and 75A were located on October 7, 2005 Sections 19 and 20 Township 22 North Range 50 East Eureka County, Nevada

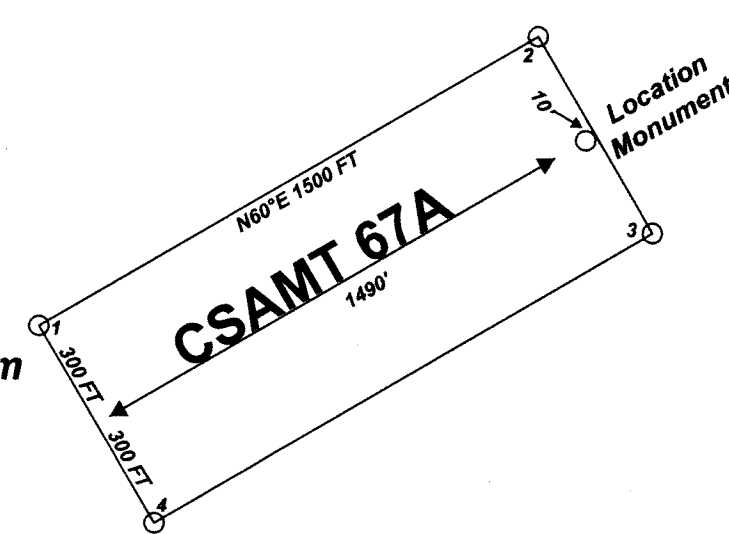
Claim Location Map for CSAMT 67A, 69A, 71A, 73A, and 75A

Scale 1:6000
1" = 500'



Notes:
Location Monuments are set 10' from claim end lines unless noted otherwise. All location and corner monuments are 2" X 2" X 4' wooden posts with scribed metal tags. All claims are 600' by 1500' unless noted otherwise.

Typical Claim



FILED AT THE REQUEST OF White Knight Gold
on 10/12/2005 at 20 miles post 19 in
RECORDS OF EUREKA COUNTY, NEVADA
J.N. REBALEA, Recorder
File No. 201213 Fee \$ 79.00



MINING CLAIM LOCATION MAP CSAMT 67A, 69A, 71A, 73A, and 75A Lode Mining Claims
White Knight Gold (U.S.) Inc. 121 Woodland Ave Suite 140 Reno NV 89523
CSAMT 67A et al.dwg
Surveyed By: T&T Exploration L.L.C. Datum: 1927 Projection: UTM Zone 11 Units: Feet

Locator:
White Knight Gold (U.S.) Inc.
121 Woodland Ave Suite 140
Reno NV 89523