



Golden Trend Resources, Inc.
 1440 - 1166 Alberni St., Vancouver, BC V6E 3Z3
 HC 100-187,196-197 Lode Claims
 T.26,27N.,R.49,50E; Eureka County, Nevada

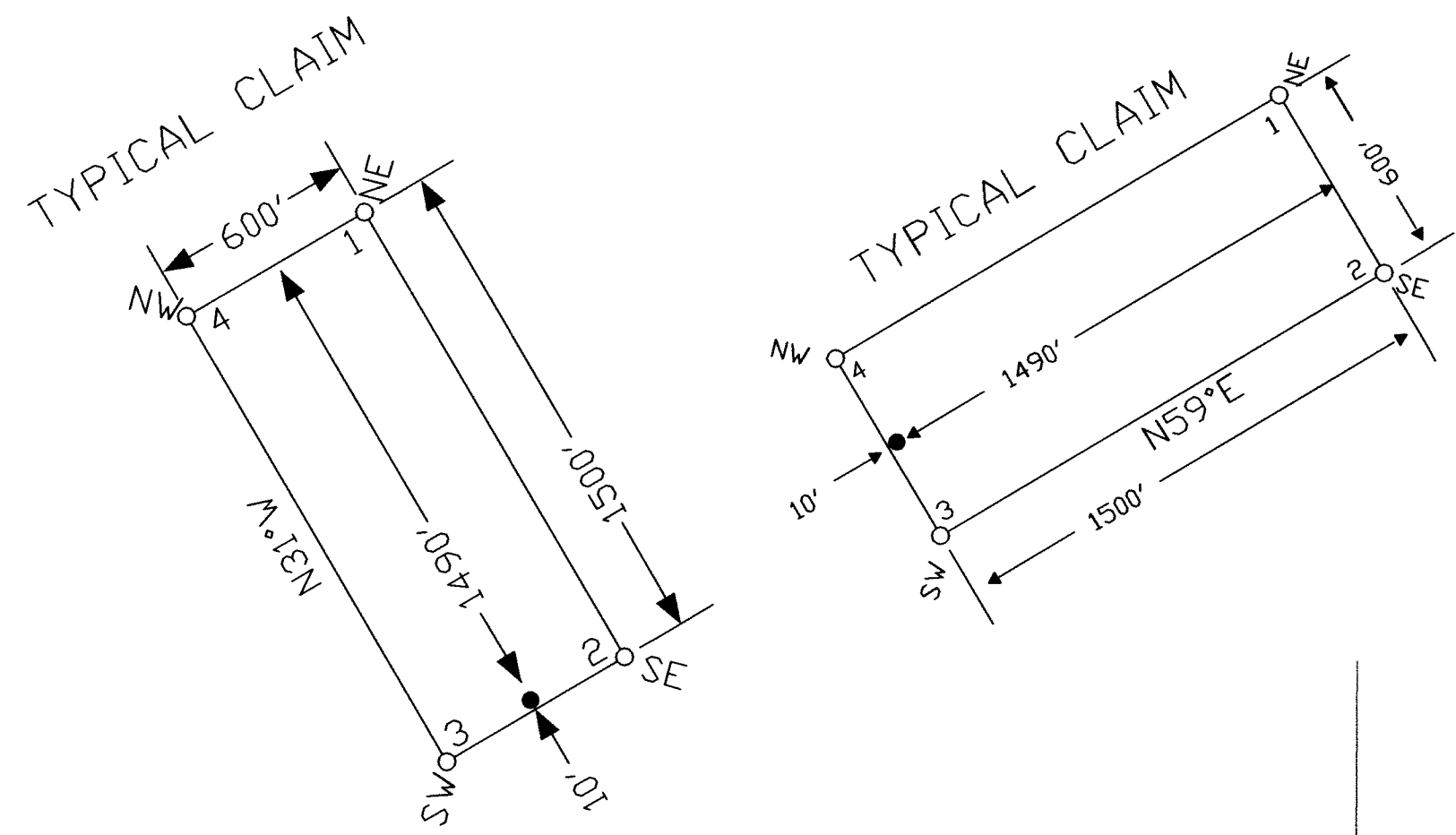
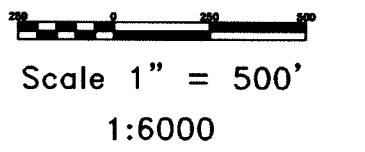
369 - 5th STREET
 PH: (775) 778-0668 ELKO, NV 89801 FAX: (775) 778-0687

DATE: October 2005
 ACAD FILE NAME: client\goldtr\hc2005.dwg
 PLOT SCALE: 1"=500'
 DRAWN BY: sms
 SHEET 1 OF 2

LOCATION DATES:
 September 2, 2005 - HC 151-187
 September 16, 2005 - HC 196-197
 September 30, 2005 - HC 100-150

(Total 90 Claims)

T.27N.



NOTES:
 LOCATION MONUMENTS SET 10' FROM CLAIM END
 CENTERLINES. ALL LOCATION MONUMENTS AND CLAIM
 POSTS ARE 2"x2"x4' WOODEN STAKES.

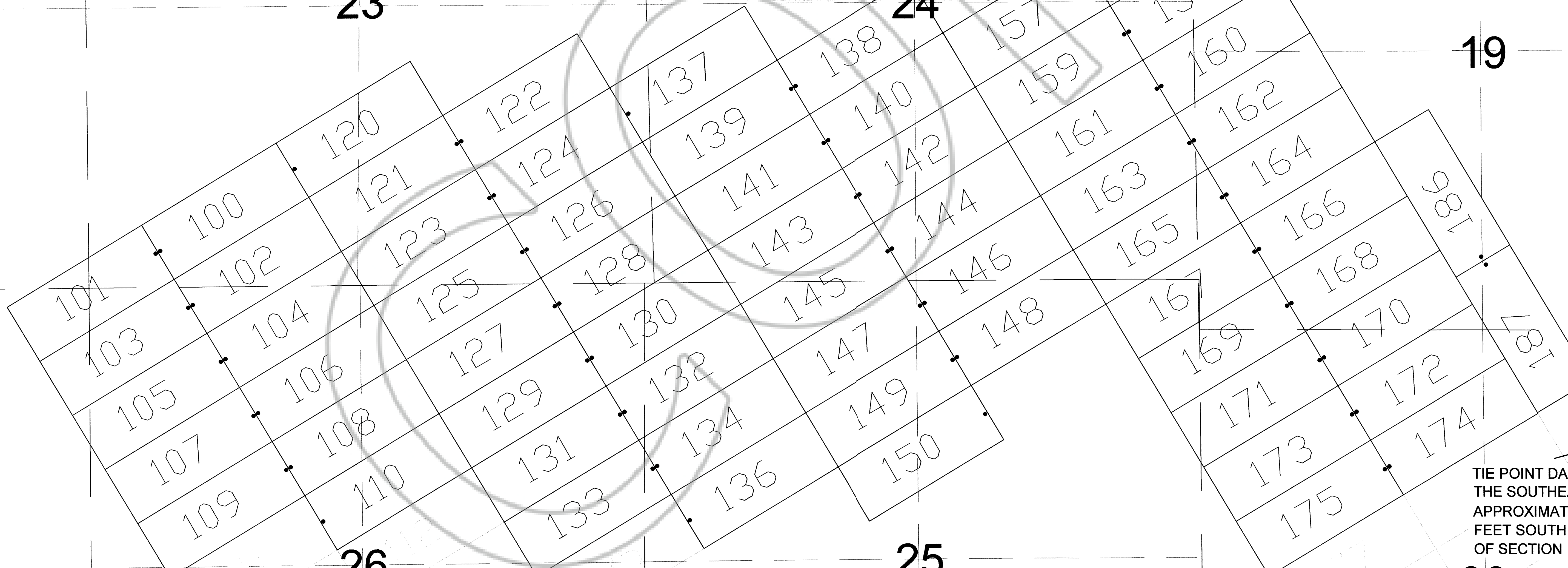
DASHED SECTION LINES INDICATE PROJECTED SECTIONS.

22

23

24

19



27

26

25

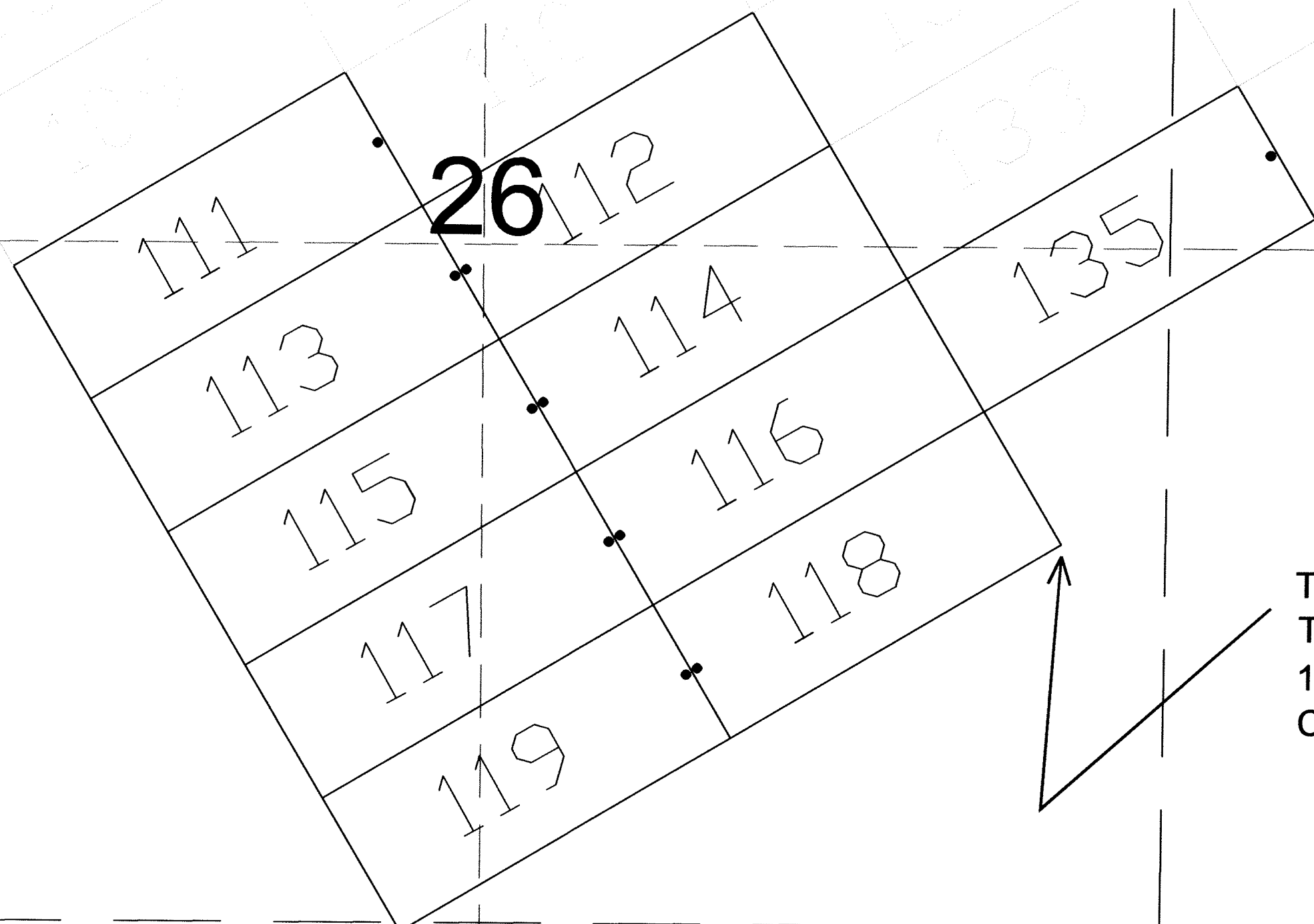
30

CONTINUED ON SHEET 2

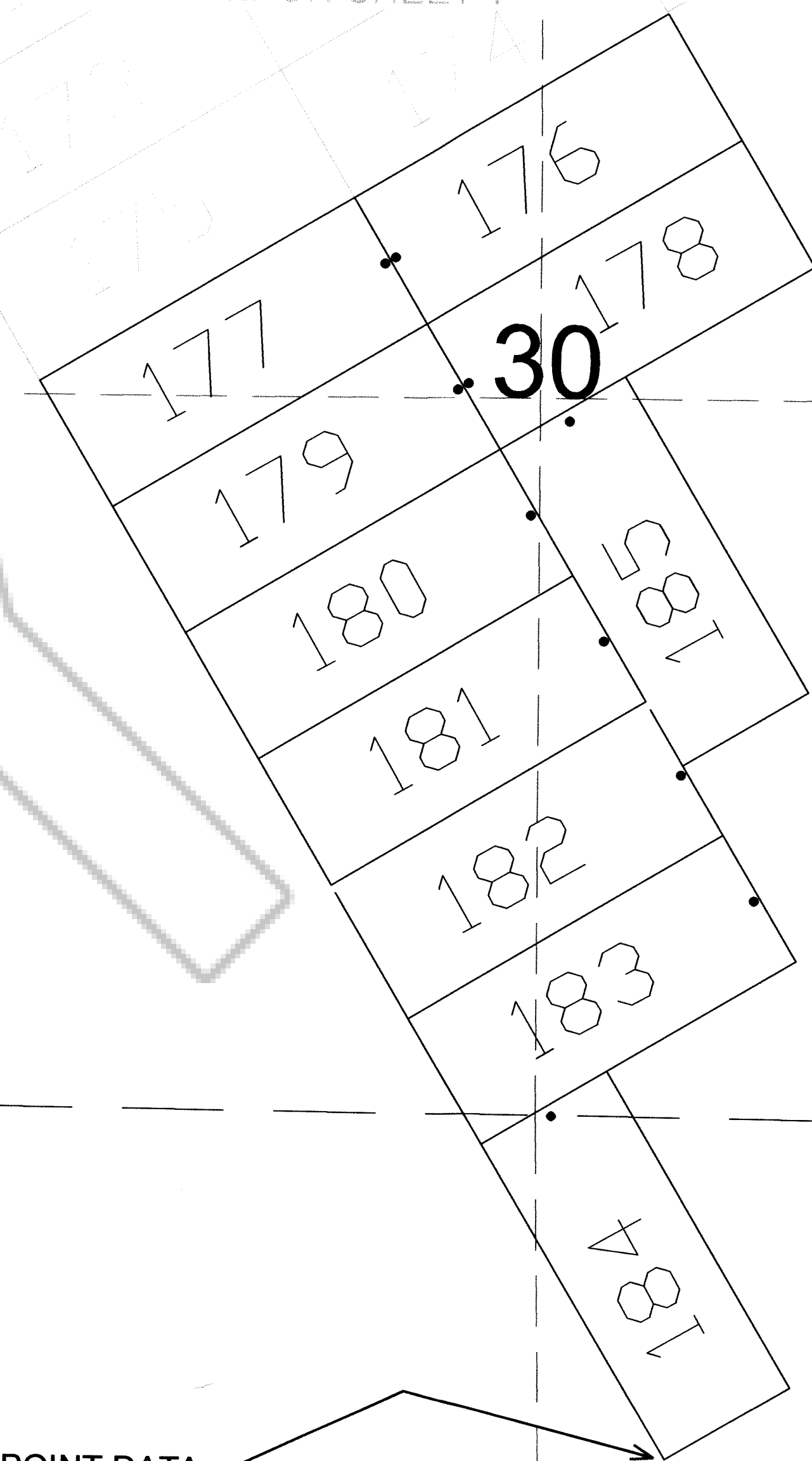
CONTINUED ON SHEET 2

GOLDEN TREND
 FILED AT THE REQUEST OF:
 ON 10/20/05 at 01:01 mins past 3 PM
 RECORDS OF EUREKA COUNTY, NEVADA
 M.N. REBALEATI, Recorder
 File No. 201323 Fee \$ 1354.00

TIE POINT DATA:
 THE SOUTHEAST CORNER OF HC 187 LIES
 APPROXIMATELY 1,810 FEET WEST AND 471
 FEET SOUTH OF THE SOUTHEAST CORNER
 OF SECTION 19, T.27N., R.50E., M.D.B.M.



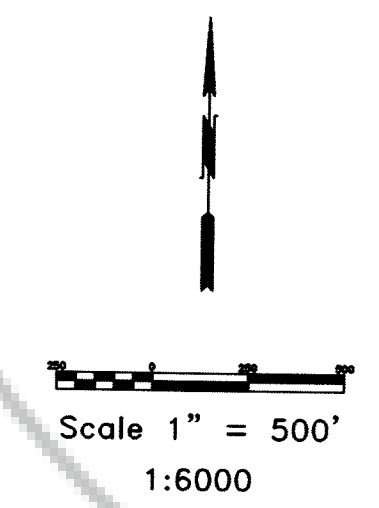
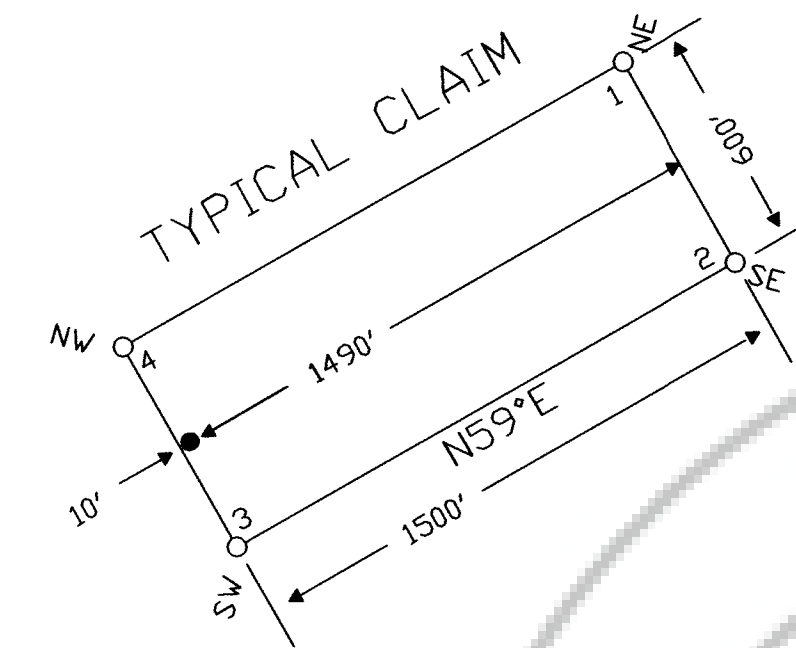
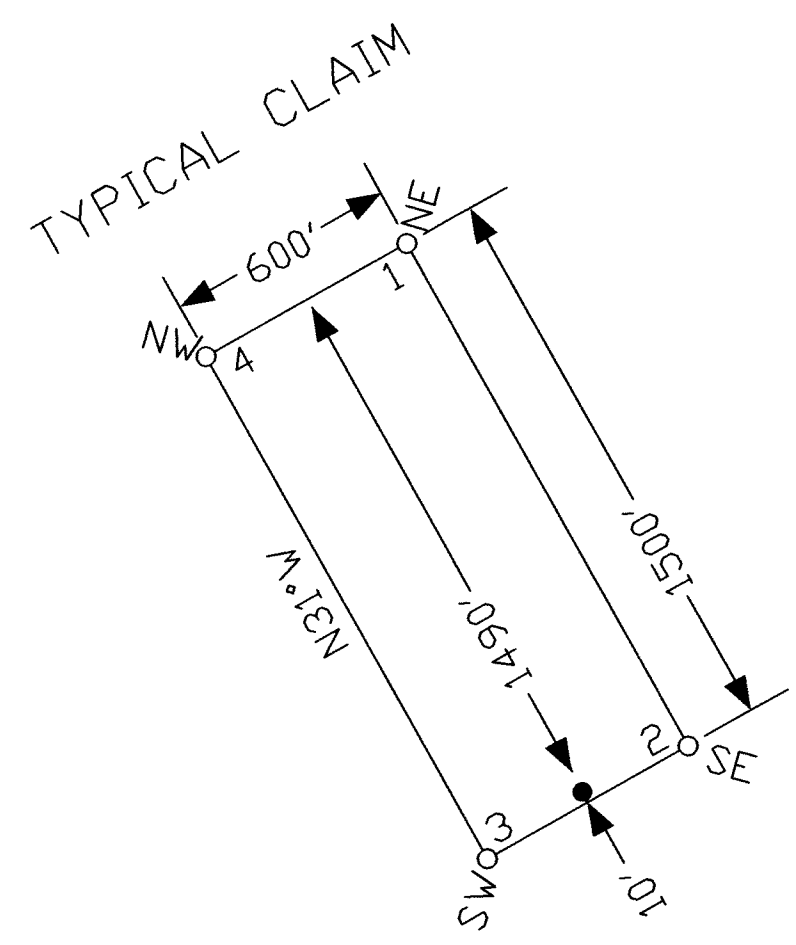
25



30

TIE POINT DATA:
 THE SOUTHEAST CORNER OF HC 118 LIES APPROXIMATELY
 11,259 FEET WEST AND 3,346 FEET SOUTH OF THE SOUTHEAST
 CORNER OF SECTION 19, T.27N., R.50E., M.D.B.M.

35

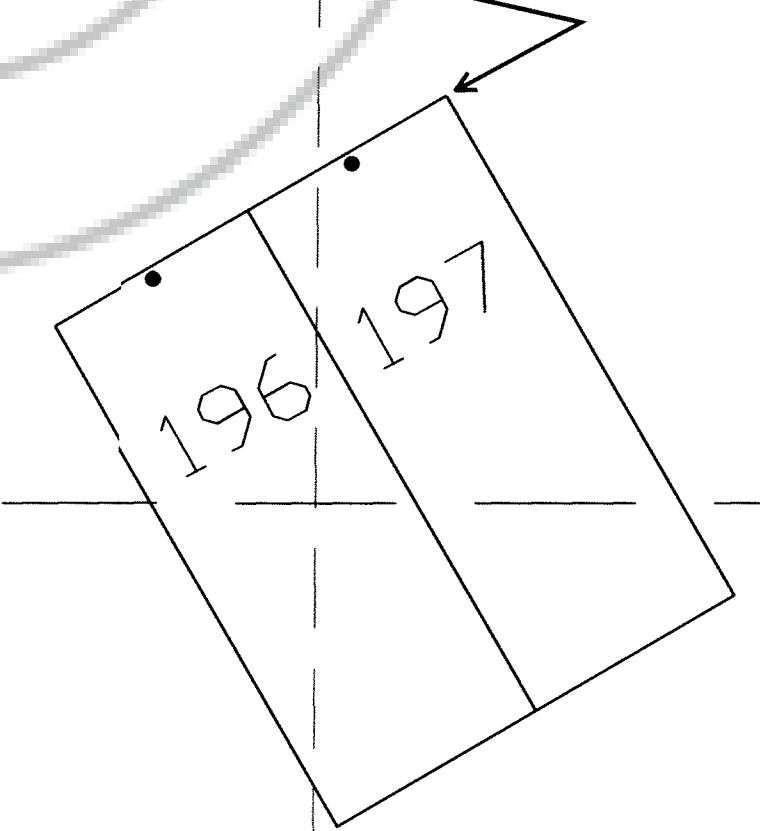


TIE POINT DATA:
 THE NORTHEAST CORNER OF HC 197 LIES APPROXIMATELY
 7,848 FEET WEST AND 9,032 FEET SOUTH OF THE SOUTHEAST
 CORNER OF SECTION 19, T.27N., R.50E., M.D.B.M.

36

TIE POINT DATA:
 THE SOUTHWEST CORNER OF HC 184 LIES APPROXIMATELY
 2,259 FEET WEST AND 6,718 FEET SOUTH OF THE SOUTHEAST
 CORNER OF SECTION 19, T.27N., R.50E., M.D.B.M.

31



1

R.49E.
R.50E.

T.27N.
T.26N.

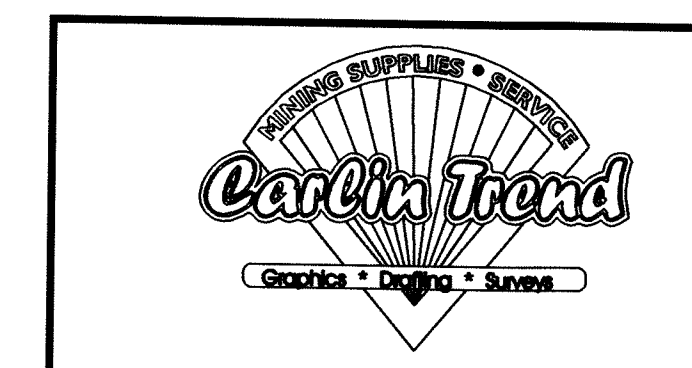
LOCATION DATES:
 September 2, 2005 - HC 151-187
 September 16, 2005 - HC 196-197
 September 30, 2005 - HC 100-150

(Total 90 Claims)

NOTES:
 LOCATION MONUMENTS SET 10' FROM CLAIM END
 CENTERLINES. ALL LOCATION MONUMENTS AND CLAIM
 POSTS ARE 2"x2"x4' WOODEN STAKES.

DASHED SECTION LINES INDICATE PROJECTED SECTIONS.

FILED AT THE REQUEST OF GOLDEN TREND
 DATE: 10/12/05, at 02:02 mins. past 2:00 P.M.
 RECORDS OF EUREKA COUNTY, NEVADA
 J.A.N. REBALEATI, Recorder
 File No. 201323 Fee \$ 1,354.00



Locator:
 Golden Trend Resources, Inc.
 1440 - 1166 Alberni St., Vancouver, BC V6E 3Z3
 HC 100-187, 196-197 Lode Claims
 T.26,27N., R.49,50E; Eureka County, Nevada

369 - 5th STREET
 PH: (775) 778-0668 ELKO, NV 89801 FAX: (775) 778-0687

DATE: October 2005
 ACAD FILE NAME: clientspecific\bc090502.dwg
 PLOT SCALE: 1"=500'
 DRAWN BY: sms
 SHEET 2 OF 2