

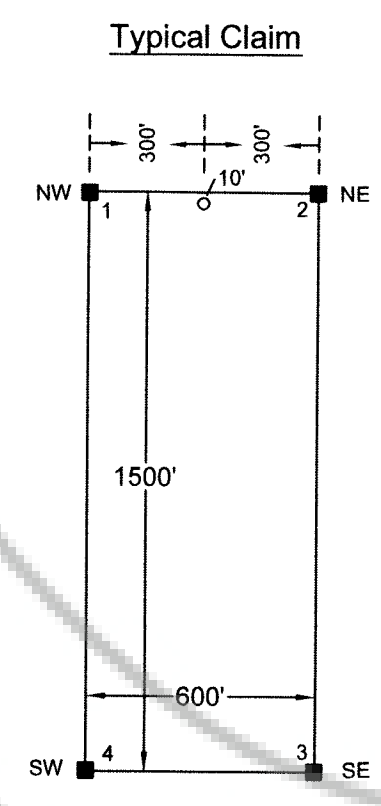
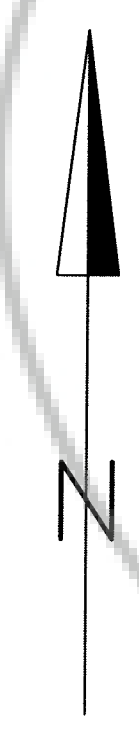
T22N R50E

# MAP OF THE JAKE (9-23) GROUP OF LODE CLAIMS

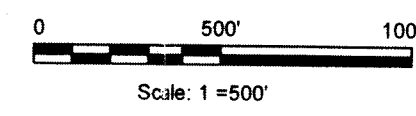
Unsurveyed Sections 15-16, 21-22, T22N R50E, MDB&M  
Unknown mining district, Eureka County, Nevada



The SE corner of Jake 23 bears S15°W and is 4,382.48' from the NE corner of Section 22 (projected), T22N, R50E, MDBM



○ Location Monument



All claims are 1500' long X 600' wide.

All location monuments are set back 10' from end lines EXCEPT location monuments for Jake 14, 15, and 18-22, which are set back 50' from end lines. Jake 23 is set back 100' from the end line.

All monuments are 2"x2"x4' wooden posts marked with scribed metal tags.

Location Dates:  
 Jake 9-18      September 4, 2005  
 Jake 19-23    September 5, 2005

Locator:  
 White Knight Gold (U.S.) Inc.  
 121 Woodland Ave., #140  
 Reno, NV 89523

FILED AT THE REQUEST OF *White Knight Gold*  
 11/4 20 05 2P min. pag. 92 M  
 RECORDS OF EUREKA COUNTY, NEVADA  
 M.N. REBALEATI, Recorder  
 File No. 201455 Fee \$ 229.00