

11

12

7 T27N

9000' E-W

3000' N-S

3000' N-S

QR 131	QR 133	QR 135	QR 137	QR 139	QR 141	QR 143	QR 145	QR 147	QR 149	QR 151	QR 153	QR 155	QR 157	QR 159
QR 132	QR 134	QR 136	QR 138	QR 140	QR 142	QR 144	QR 146	QR 148	QR 150	QR 152	QR 154	QR 156	QR 158	QR 160

600' E-W

600' E-W

14

3000' N-S

QR 177	QR 179	QR 181	QR 183	QR 185	QR 187	QR 189	QR 191	QR 193	QR 195	QR 197	QR 199	QR 201
QR 178	QR 180	QR 182	QR 184	QR 186	QR 188	QR 190	QR 192	QR 194	QR 196	QR 198	QR 200	QR 202

4200' E-W

1500' N-S

QR 209	QR 211	QR 213	QR 215	QR 217	QR 219
--------	--------	--------	--------	--------	--------

1200' E-W

9000' N-S

1500' N-S

QR 214	QR 216	QR 218	QR 220
--------	--------	--------	--------

600' E-W

1500' N-S

QR 243	QR 245	QR 247
--------	--------	--------

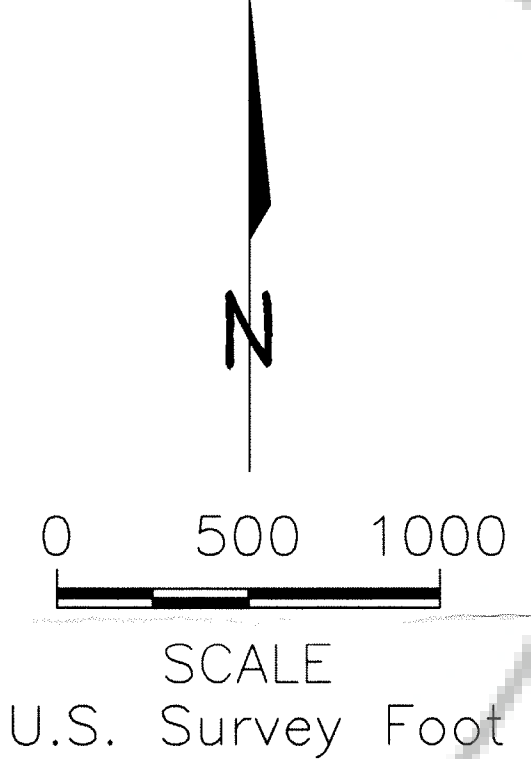
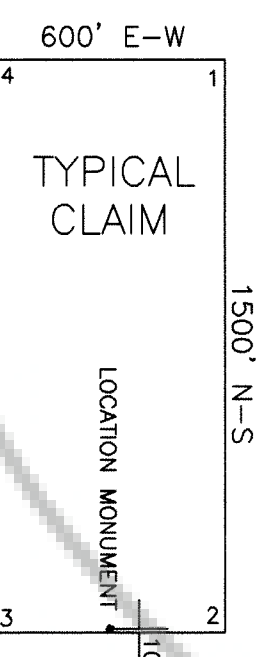
1200' E-W

1500' N-S

QR 248
--------

600' E-W

R49E  
R50E



ALL CLAIMS ARE 1500' X 600'  
UNLESS OTHERWISE NOTED.  
ALL MONUMENTS ARE 2" X 2" X 4"  
WOODEN POSTS.

Sections are projected using Nevada  
GCDB Nevada State Plane 1927

**LODE MINING CLAIM MAP**  
**QR 1-127 CLAIMS**

T27N, R49-50E, M.D.M.  
EUREKA COUNTY, NEVADA

**CRAIN ENERGY, L.P.**  
P.O. BOX 2146  
LONGVIEW, TEXAS 75606

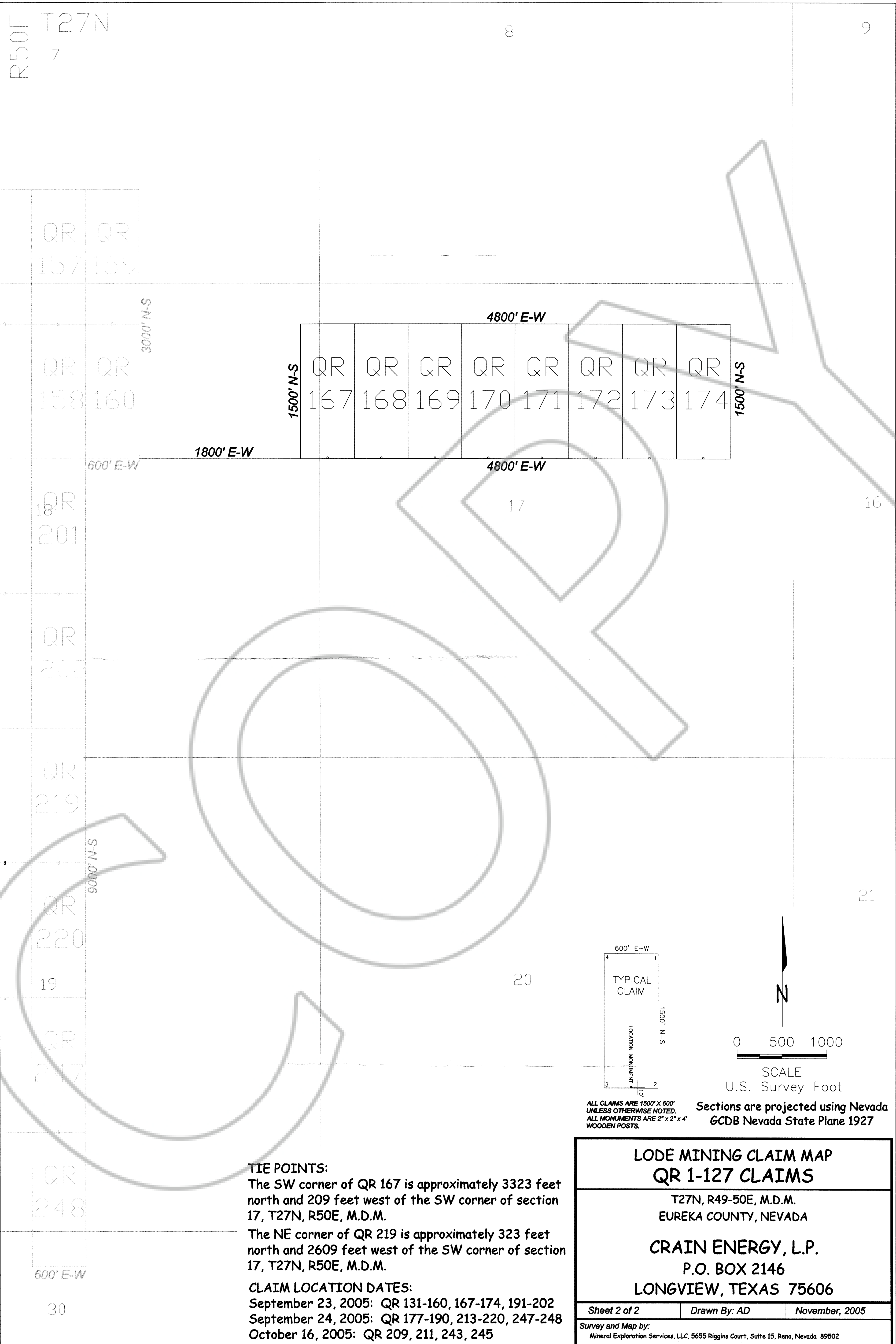
Sheet 1 of 2      Drawn By: AD      November, 2005

Survey and Map by:  
Mineral Exploration Services, LLC, 5655 Riggins Court, Suite 15, Reno, Nevada 89502

**TIE POINTS:**  
The SW corner of QR 167 is approximately 3323 feet north and 209 feet west of the SW corner of section 17, T27N, R50E, M.D.M.  
The NE corner of QR 219 is approximately 323 feet north and 2609 feet west of the SW corner of section 17, T27N, R50E, M.D.M.

**CLAIM LOCATION DATES:**  
September 23, 2005: QR 131-160, 167-174, 191-202  
September 24, 2005: QR 177-190, 213-220, 247-248  
October 16, 2005: QR 209, 211, 243, 245

FILED AT THE REQUEST OF *Crain Energy*  
11/16/05 at 2:25 mins. past 2:00 PM  
RECORDS OF EUREKA COUNTY, NEVADA  
J.N. REBALEATI, Register  
File No. 201614      Fee \$ 1174.00 192



QR QR  
157 159

QR QR  
158 160

QR QR QR QR QR QR QR QR QR  
167 168 169 170 171 172 173 174

QR  
18  
201

QR  
202

QR  
219

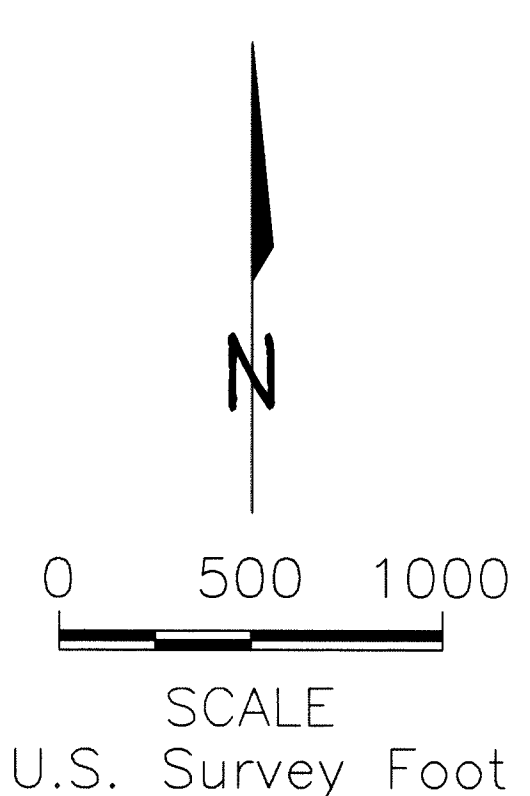
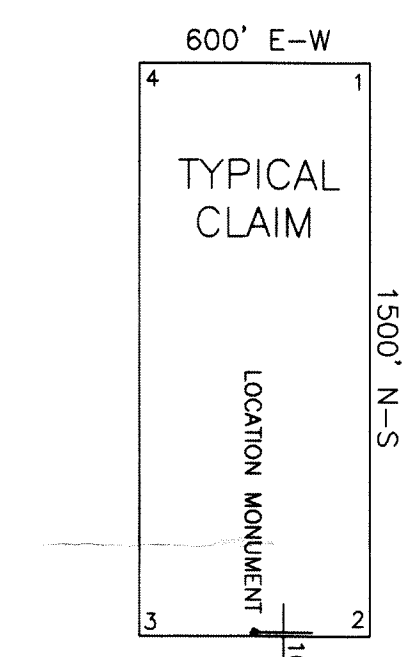
QR  
220

QR  
247

QR  
248

**TIE POINTS:**  
 The SW corner of QR 167 is approximately 3323 feet north and 209 feet west of the SW corner of section 17, T27N, R50E, M.D.M.  
 The NE corner of QR 219 is approximately 323 feet north and 2609 feet west of the SW corner of section 17, T27N, R50E, M.D.M.

**CLAIM LOCATION DATES:**  
 September 23, 2005: QR 131-160, 167-174, 191-202  
 September 24, 2005: QR 177-190, 213-220, 247-248  
 October 16, 2005: QR 209, 211, 243, 245



ALL CLAIMS ARE 1500' X 600' UNLESS OTHERWISE NOTED.  
 ALL MONUMENTS ARE 2" x 2" x 4" WOODEN POSTS.  
 Sections are projected using Nevada GCSB Nevada State Plane 1927

<b>LODE MINING CLAIM MAP</b>		
<b>QR 1-127 CLAIMS</b>		
T27N, R49-50E, M.D.M. EUREKA COUNTY, NEVADA		
<b>CRAIN ENERGY, L.P.</b>		
P.O. BOX 2146 LONGVIEW, TEXAS 75606		
Sheet 2 of 2	Drawn By: AD	November, 2005
Survey and Map by: Mineral Exploration Services, LLC, 5655 Riggins Court, Suite 15, Reno, Nevada 89502		

FILED AT THE REQUEST OF *Crain Energy*  
 on 11/16/05, at 2:32 mins. past 2:00 P.M.  
 RECORDS OF EUREKA COUNTY, NEVADA  
 S.N. RECORDS, Recorder  
 File No. **201614** Fee \$ 292