



Locator:

Idaho General Mines, Inc.

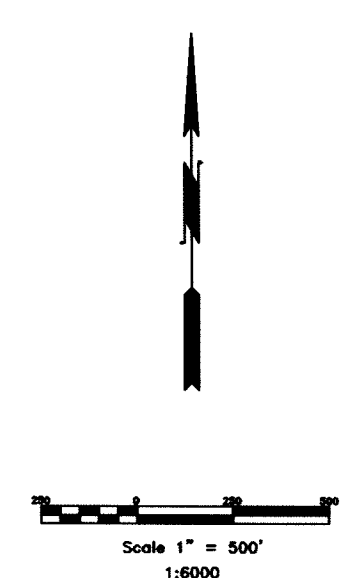
10 N. Post Street, Ste 610, Spokane, WA 99201

NET 1-322 Lode Claims

T.22,23N.,R.52E; Eureka County, Nevada

NOTES:  
LOCATION MONUMENTS SET 10' FROM CLAIM END  
CENTERLINES. ALL LOCATION MONUMENTS AND CLAIM  
POSTS ARE 2"x2"x4' WOODEN STAKES.

DASHED SECTION LINES INDICATE PROJECTED SECTIONS.



369 - 5th STREET  
PH: (775) 778-0668 ELKO, NV 89801 FAX: (775) 778-0687

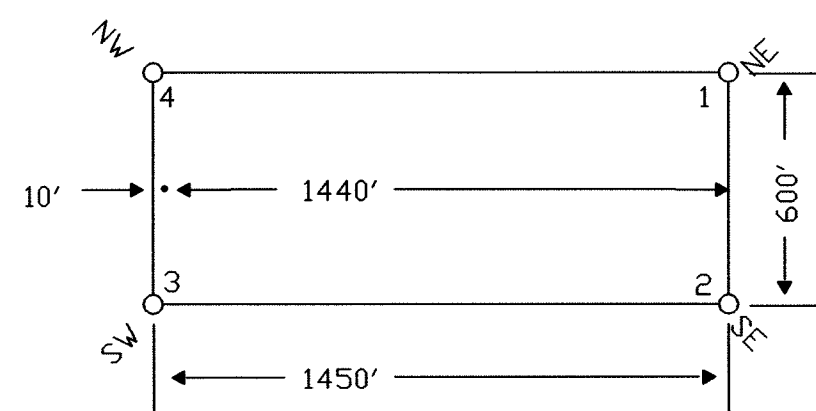
DATE: November 2005  
ACAD FILE NAME: clients\idohogen\2005\net1.dwg  
DRAWN BY: sms  
PLOT SCALE: 1"=500'  
SHEET 1 OF 3

LOCATION DATES:

- September 16, 2005 - NET 164-195
  - September 17, 2005 - NET 62-75,132-163,196-322
  - September 18, 2005 - NET 30-49,76-131
  - September 19, 2005 - NET 1-29,50-61
- (322 Total Claims)

TIE POINT DATA:  
THE NORTHEAST CORNER OF NET 264 LIES APPROXIMATELY  
652 FEET WEST AND 3,269 FEET NORTH OF THE NORTHWEST  
CORNER OF SECTION 1, T.22N., R.52E., M.D.B.M.

TYPICAL CLAIM



33

34

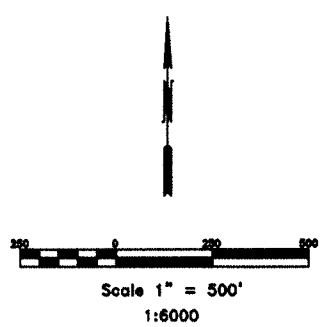
35

					NET 197	NET 196	NET 264	
				NET 132	NET 199	NET 198	NET 265	
				NET 133	NET 201	NET 200	NET 266	
				NET 135	NET 134	NET 203	NET 202	NET 267
			NET 76	NET 137	NET 136	NET 205	NET 204	NET 268
		NET 77	NET 78	NET 139	NET 138	NET 207	NET 206	NET 269
	NET 30	NET 79	NET 80	NET 141	NET 140	NET 209	NET 208	NET 270
	NET 31	NET 81	NET 82	NET 143	NET 142	NET 211	NET 210	NET 271
NET 33	NET 32	NET 83	NET 84	NET 145	NET 144	NET 213	NET 212	NET 272
NET 35	NET 34	NET 85	NET 86	NET 147	NET 146	NET 215	NET 214	NET 273
NET 37	NET 36	NET 87	NET 88	NET 149	NET 148	NET 217	NET 216	NET 275
NET 39	NET 38	NET 89	NET 90	NET 151	NET 150	NET 219	NET 218	NET 277
NET 41	NET 40	NET 91	NET 92	NET 153	NET 152	NET 221	NET 220	NET 279
NET 43	NET 42	NET 93	NET 94	NET 155	NET 154	NET 223	NET 222	NET 281
								NET 282

T.23N.  
T.22N.

FILED AT THE REQUEST OF Idaho General Mines  
on 11/9/2005 at 1:01 mins past 2 PM  
RECORDS OF EUREKA COUNTY, NEVADA  
M.N. REBALETTI, Recorder  
File No. 202834 Fee \$ 4242.00

CONTINUED ON SHEETS 2 AND 3



CONTINUED ON SHEET 1

NET 41      NET 40      NET 91

NET 43      NET 42      NET 93

NET 3      NET 45      NET 44      NET 95

NET 5      NET 4      NET 47      NET 46      NET 97

NET 7      NET 6      NET 49      NET 48      NET 99

NET 9      NET 8      NET 51      NET 50      NET 101

NET 11      NET 10      NET 53      NET 52      NET 103

NET 13      NET 12      NET 55      NET 54      NET 105

NET 15      NET 14      NET 57      NET 56      NET 107

NET 17      NET 16      NET 59      NET 58      NET 109

NET 1      NET 19      NET 18      NET 61      NET 60      NET 111

NET 2      NET 21      NET 20      NET 63      NET 62      NET 113

ET 94      NET 23      NET 22      NET 65      NET 64      NET 115

ET 96      NET 25      NET 24      NET 67      NET 66      NET 117

ET 98      NET 27      NET 26      NET 69      NET 68      NET 119

ET 100      ET 128      NET 28      NET 71      NET 70      NET 121

ET 102      ET 129      NET 29      NET 73      NET 72      NET 123

ET 104      ET 131      ET 130      NET 75      NET 74      NET 125

ET 106      ET 133      ET 132      ET 155      ET 154      NET 127

ET 108      ET 135      ET 134      ET 157      ET 156      ET 176

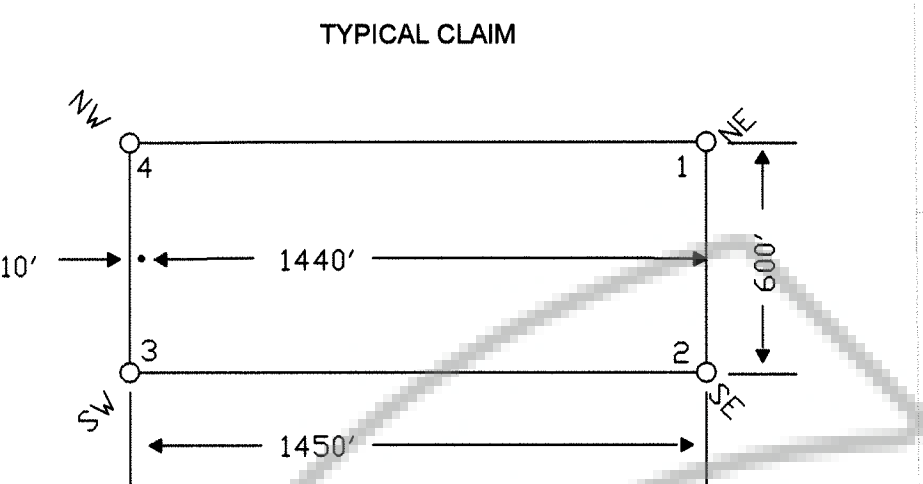
ET 110      ET 137      ET 136      ET 159      ET 158      ET 177

ET 112      ET 139      ET 138      ET 161      ET 160      ET 178

TIE POINT DATA:  
THE NORTHWEST CORNER OF NET 5 LIES APPROXIMATELY  
16,521 FEET WEST AND 5,873 FEET SOUTH OF THE NORTHWEST  
CORNER OF SECTION 1, T.22N., R.52E., M.D.B.M.

T.22N.,R.52E.

CONTINUED ON SHEET 3



EXISTING ET CLAIMS

LOCATION DATES:

- September 16, 2005 - NET 164-195
- September 17, 2005 - NET 62-75,132-163,196-322
- September 18, 2005 - NET 30-49,76-131
- September 19, 2005 - NET 1-29,50-61

(322 Total Claims)

NOTES:  
LOCATION MONUMENTS SET 10' FROM CLAIM END  
CENTERLINES. ALL LOCATION MONUMENTS AND CLAIM  
POSTS ARE 2"x2"x4' WOODEN STAKES.

DASHED SECTION LINES INDICATE PROJECTED SECTIONS.

FILED AT THE REQUEST OF: Idaho General Mines, Inc.  
ON: 09/20/05 at 11:00 AM, Fee: \$2.00  
RECORDS OF EUREKA COUNTY, NEVADA  
FILE NO. 202834 Fee \$1692.00

**Carl's Trend**  
Graphics • Drafting • Surveys

369 - 5th STREET  
ELKO, NV 89801      PH: (775) 778-0668      FAX: (775) 778-0687

Locator:  
Idaho General Mines, Inc.  
10 N. Post Street, Ste 610, Spokane, WA 99201  
NET 1-322 Lode Claims  
T.22,23N.,R.52E; Eureka County, Nevada

DATE: November 2005      ACAD FILE NAME: clients\idmgen\2005\net2.dwg      DRAWN BY: rms

PLT SCALE: 1"=500'

SHEET 2 OF 3

• NET 94	NET 155	• NET 154	NET 223	• NET 222	NET 281	• NET 282
• NET 96	NET 157	• NET 156	NET 225	• NET 224	NET 283	• NET 284
• NET 98	NET 159	• NET 158	NET 227	• NET 226	NET 285	• NET 286
• NET 100	NET 161	• NET 160	NET 229	• NET 228	NET 287	• NET 288
• NET 102	NET 163	• NET 162	NET 231	• NET 230	NET 289	• NET 290
• NET 104	NET 165	• NET 164	NET 233	• NET 232	NET 291	• NET 292
• NET 106	NET 167	• NET 166	NET 235	• NET 234	NET 293	• NET 294
• NET 108	NET 169	• NET 168	NET 237	• NET 236	NET 295	• NET 296
• NET 110	NET 171	• NET 170	NET 239	• NET 238	NET 297	• NET 298
• NET 112	NET 173	• NET 172	NET 241	• NET 240	NET 299	• NET 300
• NET 114	NET 175	• NET 174	NET 243	• NET 242	NET 301	• NET 302
• NET 116	NET 177	• NET 176	NET 245	• NET 244	NET 303	• NET 304
• NET 118	NET 179	• NET 178	NET 247	• NET 246	NET 305	• NET 306
• NET 120	NET 181	• NET 180	NET 249	• NET 248	NET 307	• NET 308
• NET 122	NET 183	• NET 182	NET 251	• NET 250	NET 309	• NET 310
• NET 124	NET 185	• NET 184	NET 253	• NET 252	NET 311	• NET 312
• NET 126	NET 187	• NET 186	NET 255	• NET 254	NET 313	• NET 314
• NET 128	NET 189	• NET 188	NET 257	• NET 256	NET 315	• NET 316
• NET 129	NET 191	• NET 190	NET 259	• NET 258	NET 317	• NET 318
• NET 130	NET 193	• NET 192	NET 261	• NET 260	NET 319	• NET 320
• NET 131	NET 195	• NET 194	NET 263	• NET 262	NET 321	• NET 322

CONTINUED ON SHEET 2

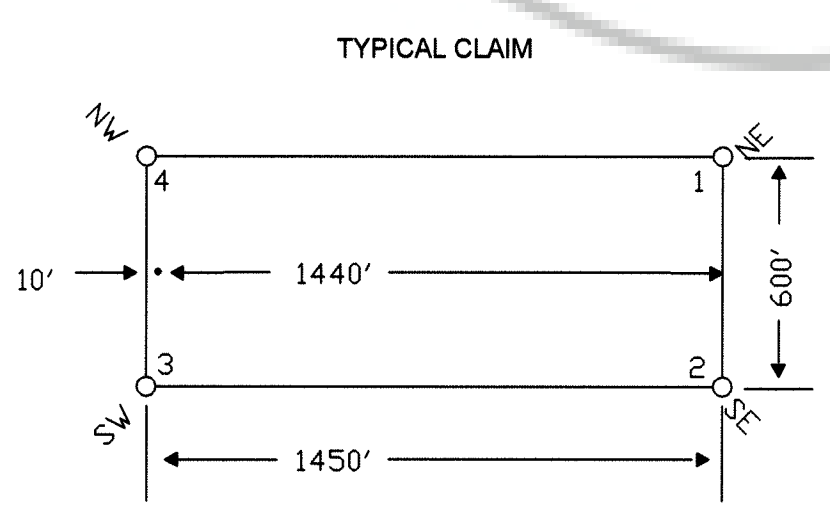
TIE POINT DATA:  
THE SOUTHEAST CORNER OF NET 322 LIES APPROXIMATELY  
980 FEET EAST AND 17,117 FEET SOUTH OF THE NORTHWEST  
CORNER OF SECTION 1, T.22N., R.52E., M.D.B.M.

22

23

24

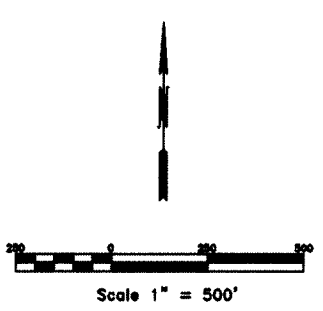
T.22N.,R.52E.




LOCATION DATES:  
September 16, 2005 - NET 164-195  
September 17, 2005 - NET 62-75,132-163,196-322  
September 18, 2005 - NET 30-49,76-131  
September 19, 2005 - NET 1-29,50-61  
(322 Total Claims)

NOTES:  
LOCATION MONUMENTS SET 10' FROM CLAIM END  
CENTERLINES. ALL LOCATION MONUMENTS AND CLAIM  
POSTS ARE 2"x2"x4' WOODEN STAKES.

DASHED SECTION LINES INDICATE PROJECTED SECTIONS.



FILED AT THE REQUEST OF Idaho General Mines, Inc.  
ON 11/17/05 AT 10:00 AM  
RECORDS & CLERK COUNTY CLERK  
ELKO COUNTY, NEVADA  
FILE NO. 202834 Fee \$ 487.20



369 - 5th STREET  
ELKO, NV 89801 PH: (775) 778-0668 FAX: (775) 778-0687

Locator:  
Idaho General Mines, Inc.  
10 N. Post Street, Ste 610, Spokane, WA 99201  
NET 1-322 Lode Claims  
T.22,23N.,R.52E; Eureka County, Nevada

DATE: November 2005	ACAD FILE NAME clients\vdohgen\2005\nel3.dwg PLOT SCALE 1"=500'	DRAWN BY srm
------------------------	--	-----------------

SHEET 3 OF 3