
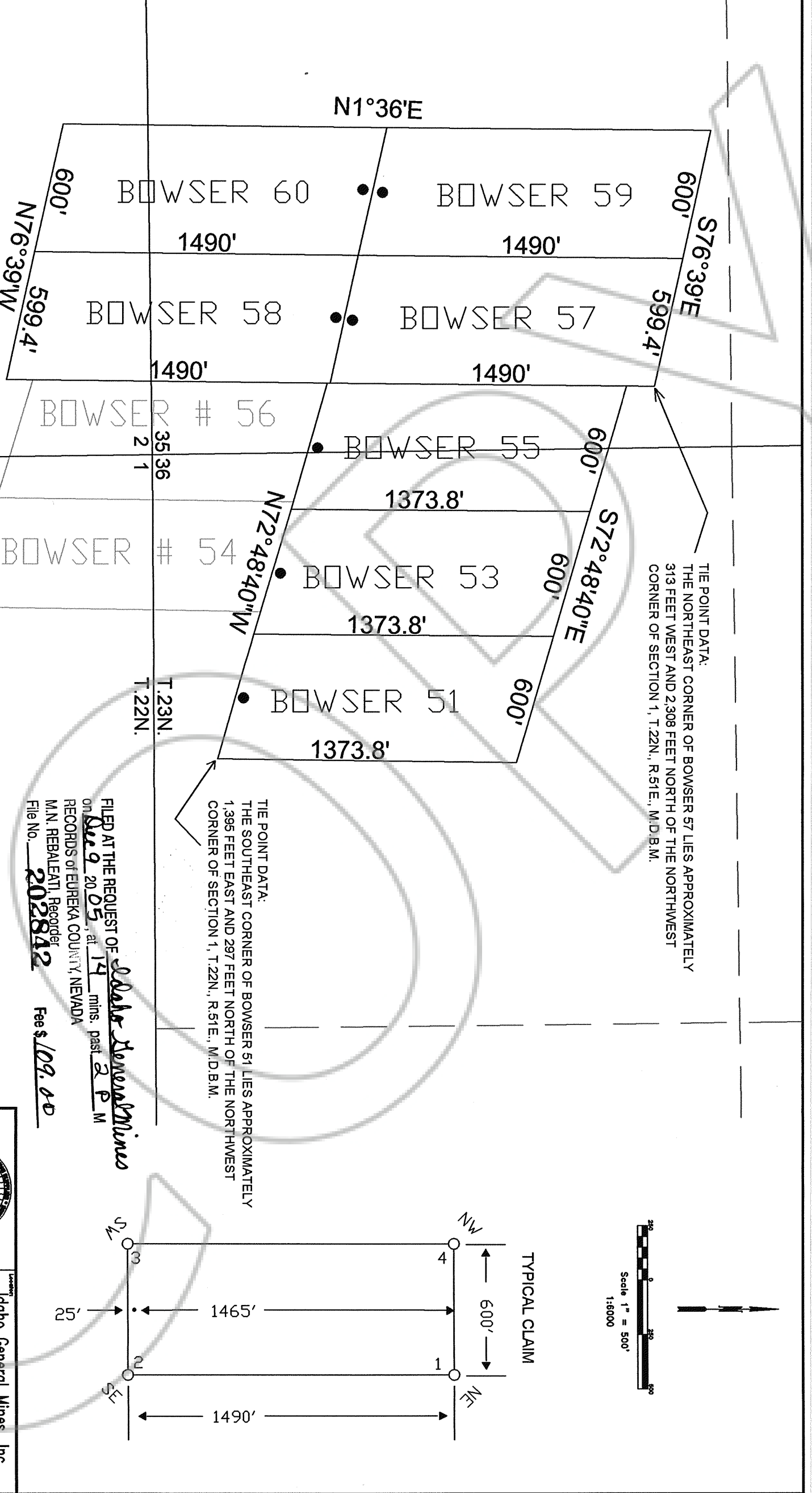


NOTES:
 LOCATION MONUMENTS SET 25' FROM CLAIM END
 CENTERLINES. ALL LOCATION MONUMENTS AND CLAIM
 POSTS ARE 2"x2"x4" WOODEN STAKES.

EXISTING BOWSER CLAIMS

LOCATION DATES:
 September 14, 2005 - Bowser 51, 53, 55, 57-60

	10th Edition 10th Edition 10th Edition
	10th Edition 10th Edition 10th Edition
Idaho General Mines, Inc. 10 N. Post Street, Ste 410, Spaldon, WA 99201 BOWSER Lode Claims T.22N., R.51E, Eureka County, Nevada	10th Edition 10th Edition 10th Edition



FILED AT THE REQUEST OF *Shane Stevenson*
 on *09/20/05*, at *19* mins. past *2 P M*
 RECORDS OF EUREKA COUNTY, NEVADA
 M.N. REBALEATI, Recorder
 File No. *202842* Fee \$ *109.00*