

WC 33 • WC 34

EXISTING WC CLAIMS

WC 35 • WC 36

WC 37 • WC 38

• WC 58

• WC 59

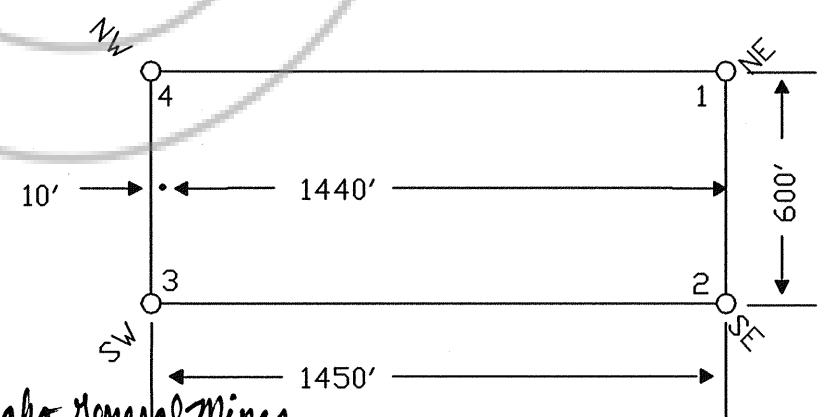
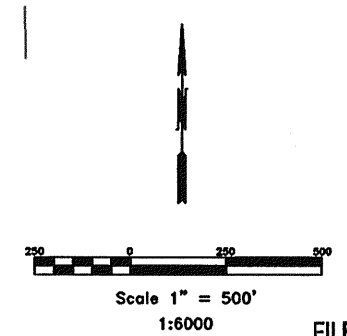
• WC 60

• WC 61

TIE POINT DATA:  
THE NORTHEAST CORNER OF WC 58 LIES  
APPROXIMATELY 15 FEET WEST AND 986  
FEET SOUTH OF THE NORTHEAST CORNER  
OF SECTION 14, T.22N., R.51E., M.D.B.M.

14

TYPICAL CLAIM



FILED AT THE REQUEST OF Idaho General Mines  
on Dec 9 2005, at 17 mins. past 2 P.M.  
RECORDS OF EUREKA COUNTY, NEVADA  
M.N. REBALEATI, Recorder  
File No. 202847 Fee \$ 64.00

LOCATION DATES:  
September 20, 2005 - WC 58-61

NOTES:  
LOCATION MONUMENTS SET 10' FROM CLAIM END  
CENTERLINES. ALL LOCATION MONUMENTS AND CLAIM  
POSTS ARE 2"x2"x4" WOODEN STAKES.

DASHED SECTION LINES INDICATE PROJECTED SECTIONS.

	Location: Idaho General Mines, Inc. 10 N. Post Street, Ste 610, Spokane, WA 99201 WC 58-61 Lode Claims T.22N., R.51E; Eureka County, Nevada
	DATE: November 2005