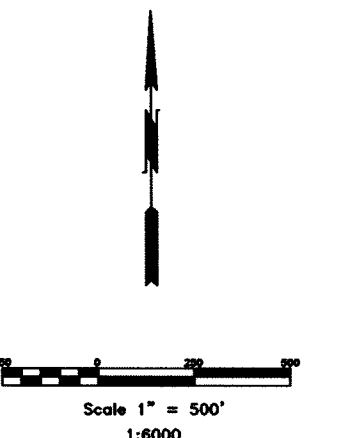
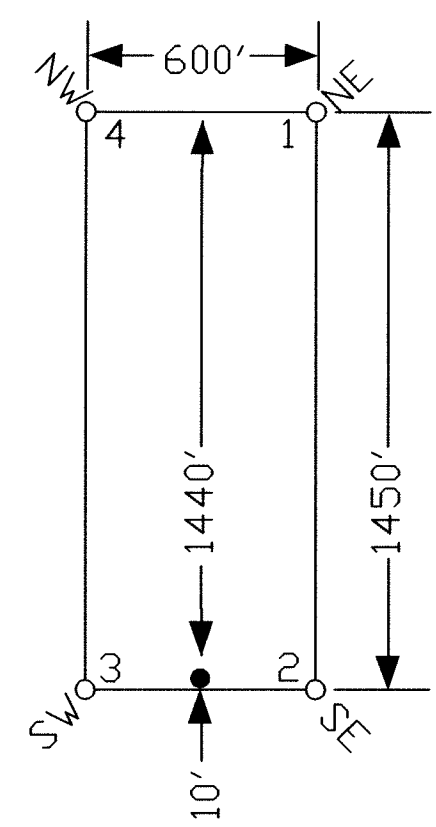


TYPICAL CLAIM



TIE POINT DATA:
THE NORTHWEST CORNER OF SD 81 LIES APPROXIMATELY
298 FEET WEST AND 6,260 FEET SOUTH OF THE NORTHWEST
CORNER OF SECTION 13, T.22N., R.51E., M.D.B.M.

SD	SD	SD	SD	SD	SD	SD	SD	SD	SD	SD	SD	SD	SD	SD	SD	SD	SD	SD
23	24								24	25					25	30		
59	61	63	65	67	68	69	70	56	36	38	40	42	44	46	48	50	52	54
SD	SD	SD	SD	SD	SD	SD	SD	SD	SD	SD	SD	SD	SD	SD	SD	SD	SD	SD
81	83	85	87	89	91	93	95	97	71	72	73	74	75	76	77	78	79	80
:	:	:	:	:	:	:	:	:	LM 100 Ft.	LM 100 Ft.	LM 100 Ft.	LM 100 Ft.	LM 100 Ft.	LM 100 Ft.	LM 100 Ft.	LM 100 Ft.	LM 100 Ft.	LM 100 Ft.
SD	SD	SD	SD	SD	SD	SD	SD	SD	SD	SD	SD	SD	SD	SD	SD	SD	SD	SD
82	84	86	88	90	92	94	96	98	99	100	101	102	103	104	105	106	107	108
									R.51E.	R.51½E.				R.51½E.	R.52E.			
									25					25	30			
23	24								24									


NOTES:
LOCATION MONUMENTS SET 10' FROM CLAIM END CENTERLINES
UNLESS NOTED ON MAP. ALL LOCATION MONUMENTS AND CLAIM
POSTS ARE 2"x2"x4' WOODEN STAKES.

DASHED SECTION LINES INDICATE PROJECTED SECTIONS.

LOCATION DATES:
September 20, 2005 - SD 81-108

(28 Total Claims)

FILED AT THE REQUEST OF *Idaho General Mines, Inc.*
on *11/20/05* at *11:22* mins. past *2 P.M.*
RECORDS OF EUREKA COUNTY, NEVADA
J.N. REBALEATI, Recorder
File No. *202876* Fee \$ *44.00*

	Locator: Idaho General Mines, Inc. 10 N. Post Street, Ste 610, Spokane, WA 99201 SD 81-108 Lode Claims T.22N., R.51,51½,52E; Eureka County, NV
	DATE: November 2005
369 - 5th STREET PH. (775) 778-0668 ELKO, NV 89801 FAX: (775) 778-0687	IACAD FILE NAME client\kathryn\2005\el.dwg PLOT SCALE 1"=500'
DRAWN BY sms	