

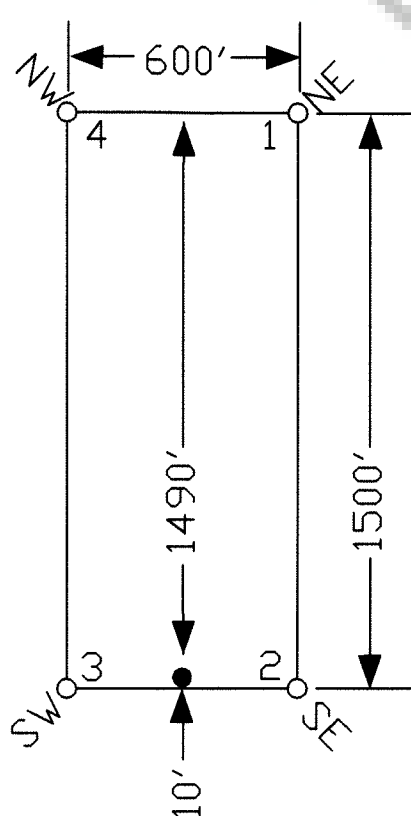
19	.
20	.
21	.
22	.
23	.
17	.
15	.
13	.
11	.
9	.
7	.
5	.
3	.
1	.
18	.
16	.
14	.
12	.
10	.
8	.
6	.
4	.
2	.

TIE POINT DATA:
THE SOUTHWEST CORNER OF MIDDLE CREEK 23
LIES APPROXIMATELY 3,303 FEET WEST AND 9,686
FEET NORTH OF THE SOUTHWEST CORNER OF
SECTION 14, T.26N., R.52E., M.D.B.M.

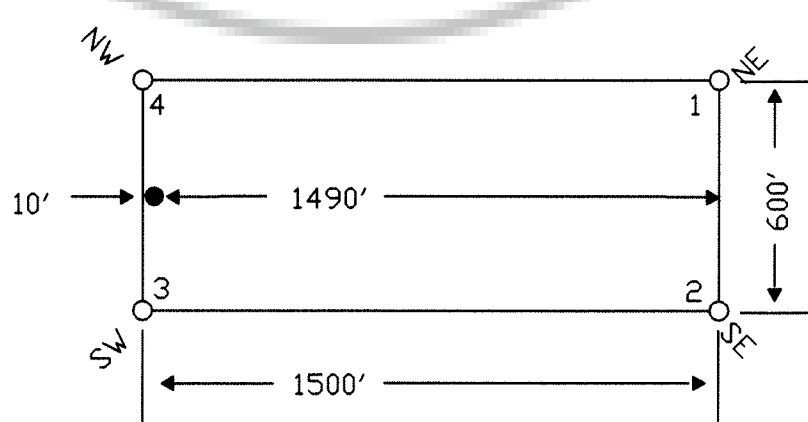
24	.
26	.
28	.
30	.
32	.
34	.
36	.
25	.
27	.
29	.
31	.
33	.
35	.
37	.
38	.
40	.
42	.
44	.
46	.
48	.
50	.
39	.
41	.
43	.
45	.
47	.
49	.
51	.
54	.
53	.
52	.

TIE POINT DATA:
THE SOUTHWEST CORNER OF MIDDLE CREEK 54 LIES
APPROXIMATELY 1,480 FEET EAST AND 2,255 FEET NORTH
OF THE SOUTHWEST CORNER OF SECTION 14, T.26N., R.52E.,
M.D.B.M.

TYPICAL CLAIM



TYPICAL CLAIM



NOTES:
LOCATION MONUMENTS SET 10' FROM CLAIM END
CENTERLINES. ALL LOCATION MONUMENTS AND CLAIM
POSTS ARE 2"x2"x4' WOODEN STAKES.

DASHED SECTION LINES INDICATE PROJECTED SECTIONS.

LOCATION DATES:
October 3, 2005 - Middle Creek 24-54
October 16, 2005 - Middle Creek 1-23

FILED AT THE REQUEST OF *Golden Gryphon*
on 12/22 2005, at 7 mins. past 1:42 P.M.
RECORDS OF EUREKA COUNTY, NEVADA
M.N. REBALANCE
File No. 205024 Fee \$ 814.00

	369 - 5th STREET ELKO, NV 89801 FAX: (775) 778-6687	Location: Golden Gryphon USA Inc. 1400 Tanager Place RR21, Roberts Creek, BC VON 2W1 Middle Creek 1-54 Lode Claims T.26N., R.52E.; Eureka County, Nevada
	DATE: December 2005 PLOT SCALE: 1"=500'	DRAWN BY: <i>ams</i>