

Sheet 1 of 2
Sheet 2 of 2

Sheet 1 of 2
Sheet 2 of 2

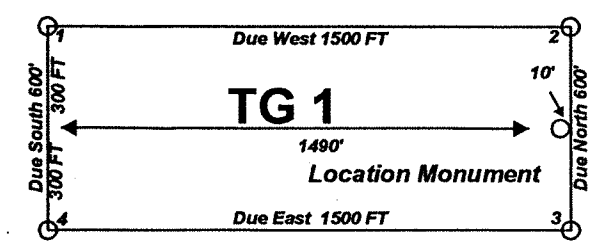
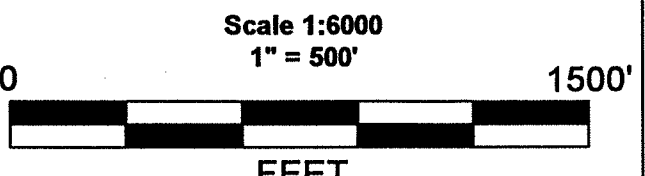
"TG" lode claims 1-70, 73-104 and 107-110 were located on November 19, 2005 and "TG" lode claims 71, 72, 105, 106, 111, and 112 were located on November 20, 2005 in Sections 1-3, and 10-14 Township 24 North Range 49 East and in Sections 5-7 Township 24 North Range 50 East and in Section 36 Township 25 North Range 49 East and in Section 31 Township 25 North Range 50 East and in Lander County, Nevada

Locator:
Placer Dome Exploration Inc.
240 South Rock Blvd, Suite 117
Reno Nv. 89502

Claim Location Map for TG 1-112
Sheet 1 of 2

Notes:
Location Monuments are set 10' from claim end lines unless noted otherwise. All location and corner monuments are 2" X 2" X 4' wooden posts with scribed metal tags. All claims are 600' by 1500' unless noted otherwise.

FILED AT THE REQUEST OF *Placer Dome Exploration Inc*
in 130 2006, at 42 mins. past 9 A.M.
RECORDS OF EUREKA COUNTY, NEVADA
M.N. REBALEATI, Recorder
File No. 203343 Fee \$ 1684.00
182



MINING CLAIM LOCATION MAP
TG 1-112
Lode Mining Claims

Placer Dome Exploration Inc.
240 South Rock Blvd, Suite 117
Reno Nv. 89502

TG_1_112_Claims.dwg
December 15, 2005
Drawn By: G.I.S. Land Services

Surveyed By: T&T Exploration L.L.C.
Datum: 1927 Projection: UTM Zone 11
Units: Feet

